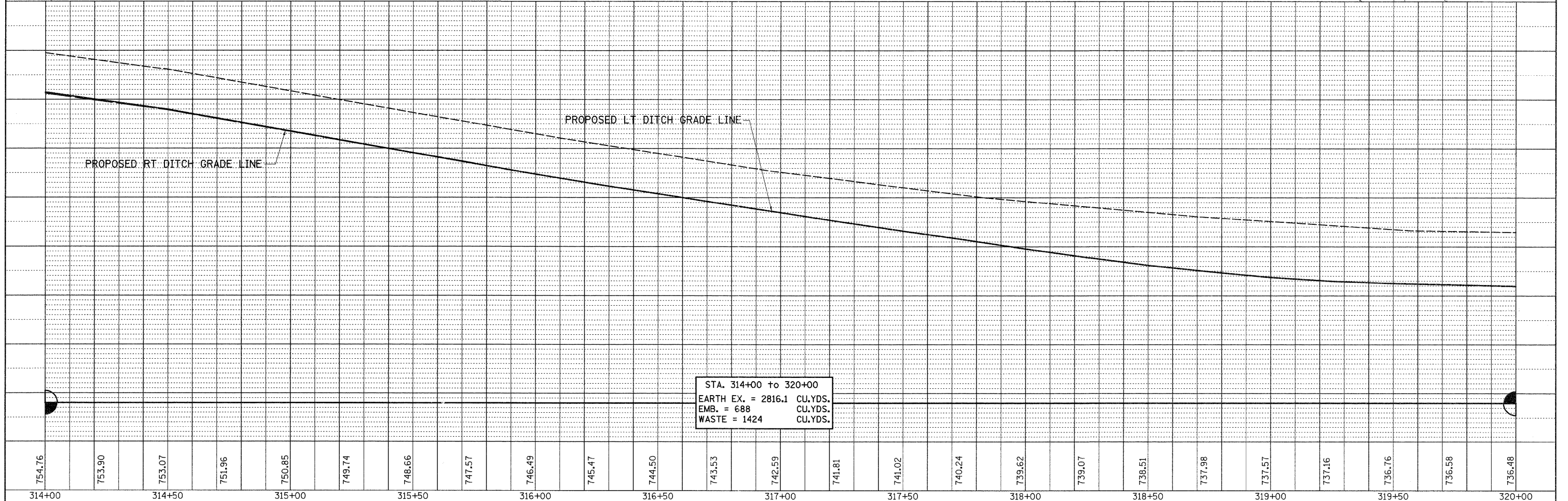
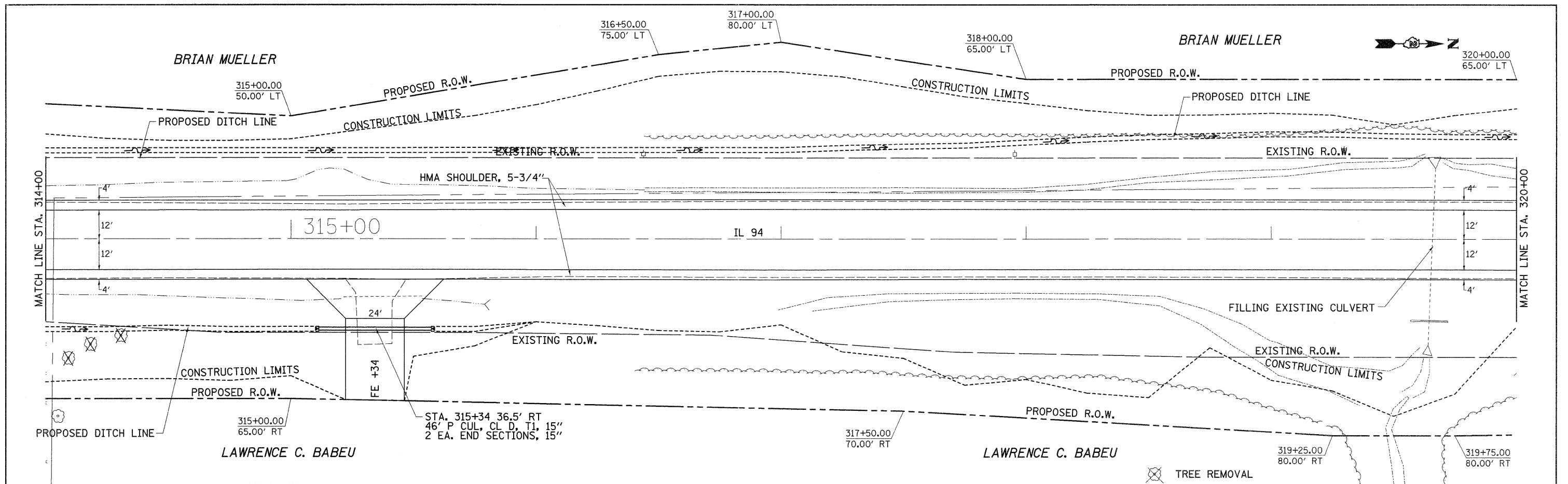


DATE	
BY	
DESIGNED	
DRAWN	
CHECKED	
DATE	
FILE	
NO.	

DATE	
BY	
DESIGNED	
DRAWN	
CHECKED	
DATE	
FILE	
NO.	



STA. 314+00 to 320+00
 EARTH EX. = 2816.1 CU.YDS.
 EMB. = 688 CU.YDS.
 WASTE = 1424 CU.YDS.

FILE NAME =	USER NAME = grantpm	DESIGNED -	REVISED -	STATE OF ILLINOIS DEPARTMENT OF TRANSPORTATION	IL 94 PLAN & PROFILE	F.A.S. RTE.	SECTION	COUNTY	TOTAL SHEETS	SHEET NO.	
c:\pw\work\pwwork\grantpm\d0184077\0212307\shtr-p\Inprf.dgn		DRAWN -	REVISED -			•	(19,20)RS-2	**	231	38	
PLOT SCALE = 20.0000' / in.		CHECKED -	REVISED -			CONTRACT NO. 64D72					
PLOT DATE = Thu Jun 23 08:57:38 2011		DATE -	REVISED -			ILLINOIS FED. AID PROJECT					
					SCALE:	SHEET NO. OF SHEETS STA. TO STA.		ILLINOIS FED. AID PROJECT			
					• 221,213 & 220						
					** ROCK TSI AND MERCER COUNTY						