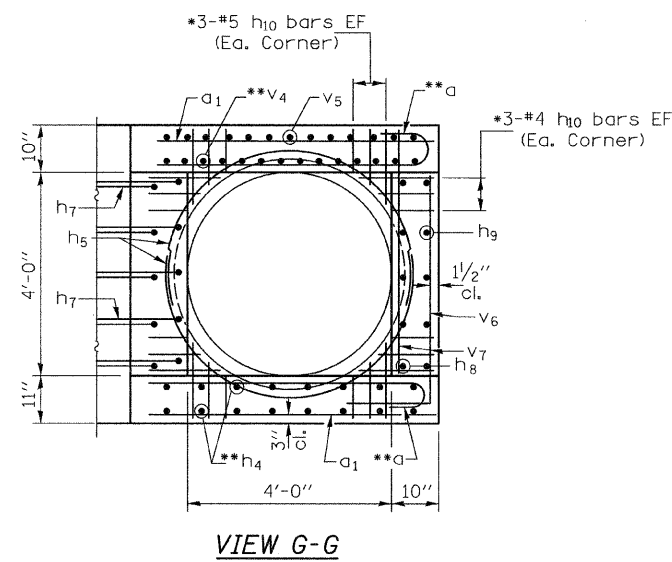
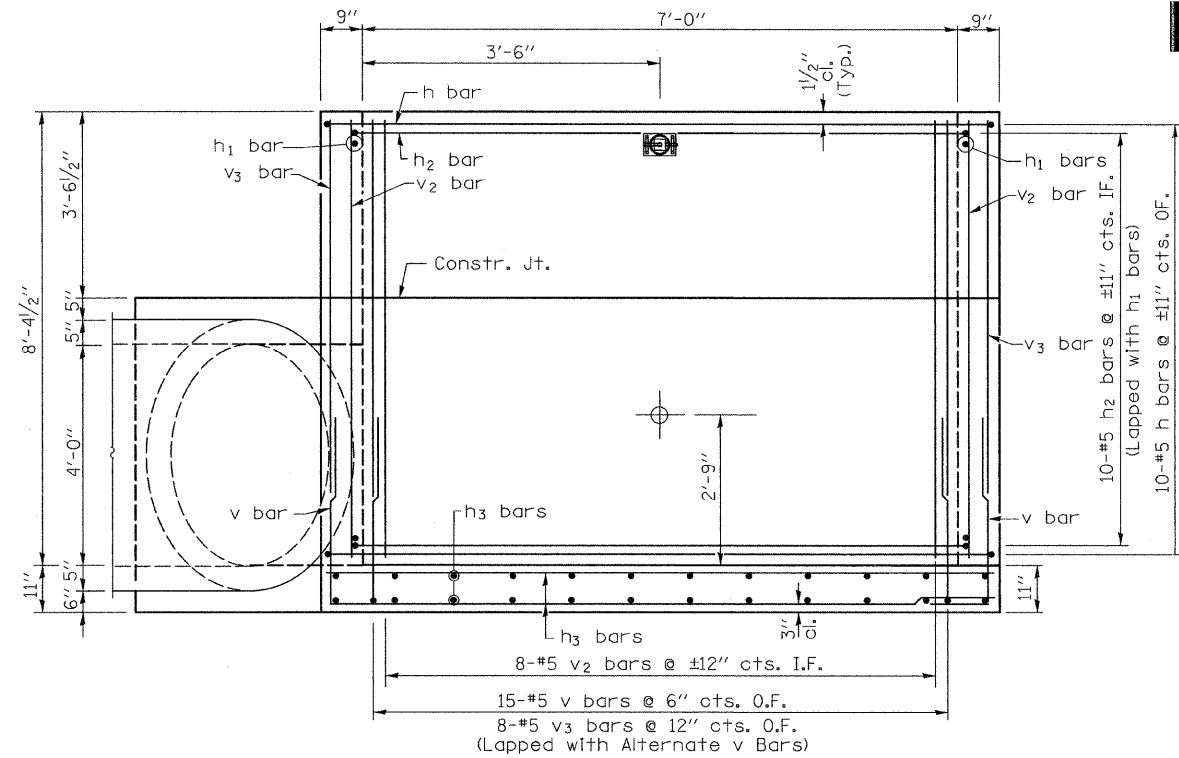
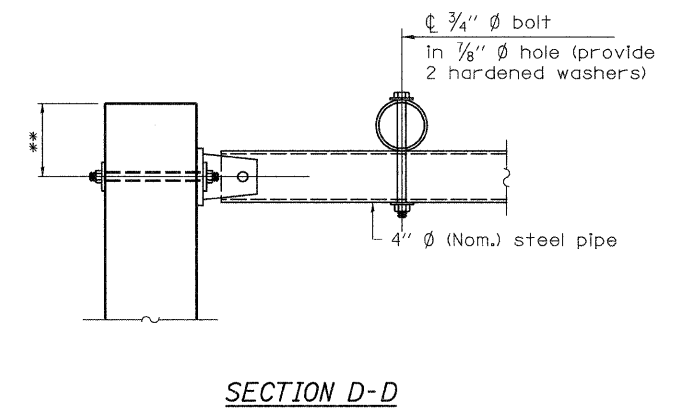
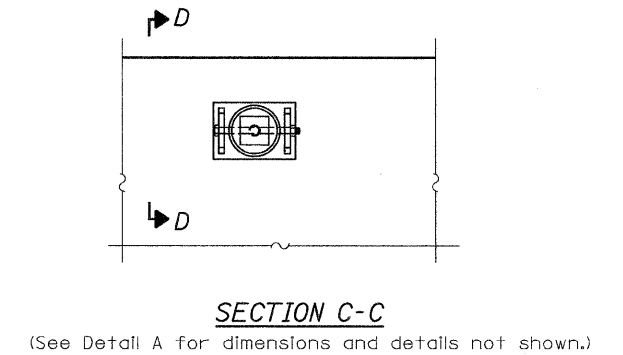
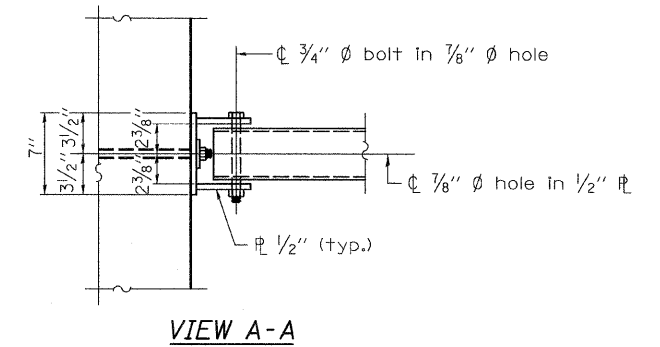
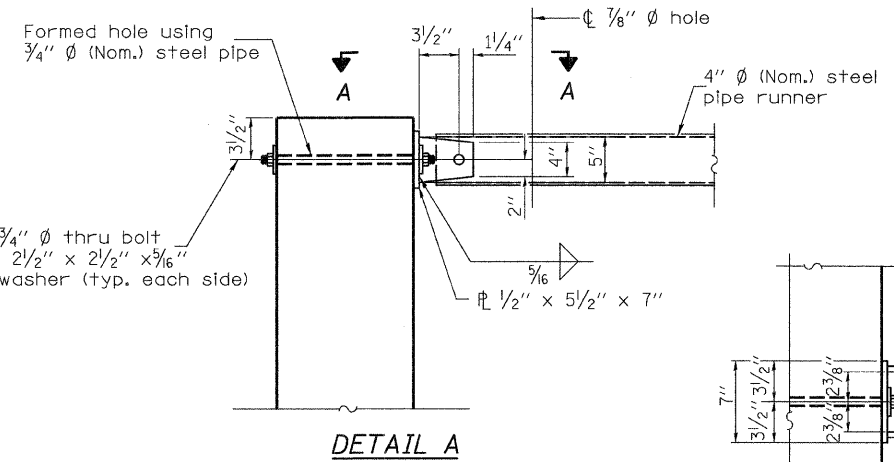
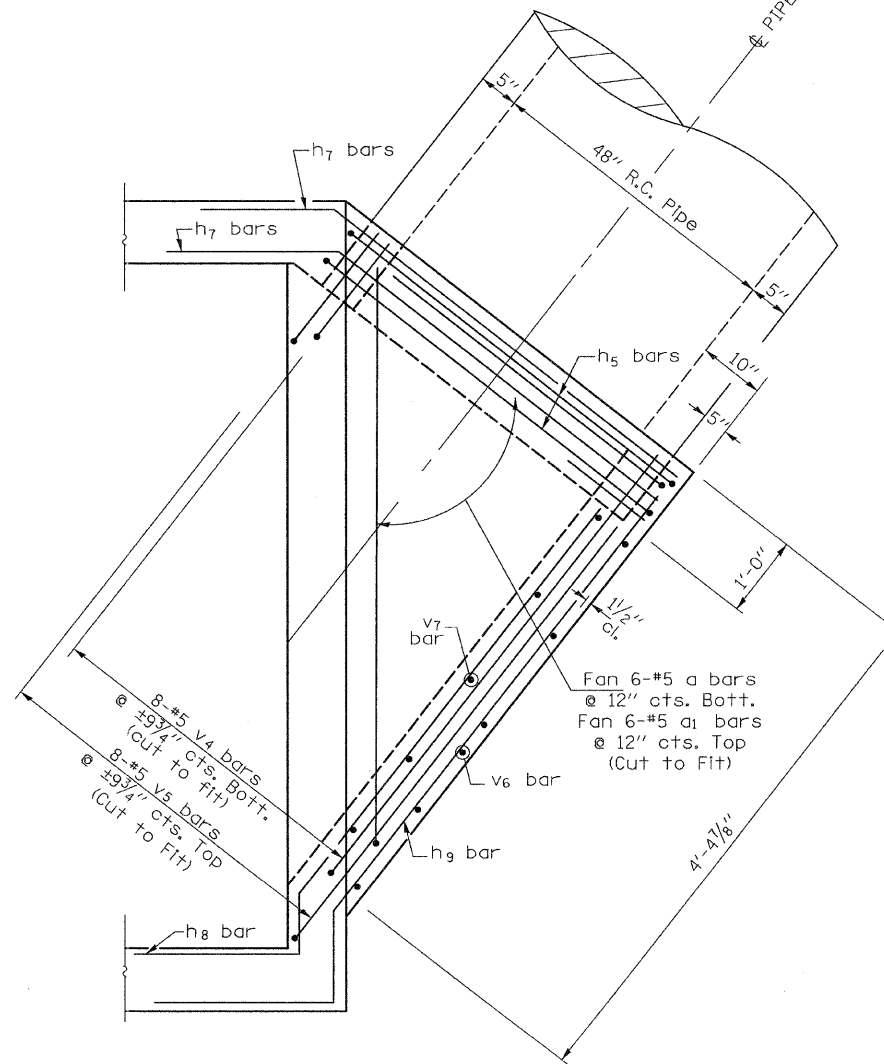


DROP BOX NO. 3

LT STA. 304 + 93



*Cut Bars to fit around Pipe
**Bend to fit around pipe.



** Measured perpendicular to top of culvert wall. In addition, formed hole shall be located a minimum of 6" measured horizontally from any vertical joints necessary for construction of the culvert end section.

DESIGNED	C.T.M.
CHECKED	B.A.N.
DRAWN	C.T.M.
CHECKED	B.A.N.

SHEET NO. 3 3 SHEETS	ROUTE NO.	SECTION	COUNTY	TOTAL SHEETS	SHEET NO.
	FAS 221	(19,20)RS-2	ROCK ISLAND	231	51
	FED. ROAD DIST. NO. 7 ILLINOIS			CONTRACT NO. 64D72 FED. AID PROJECT	