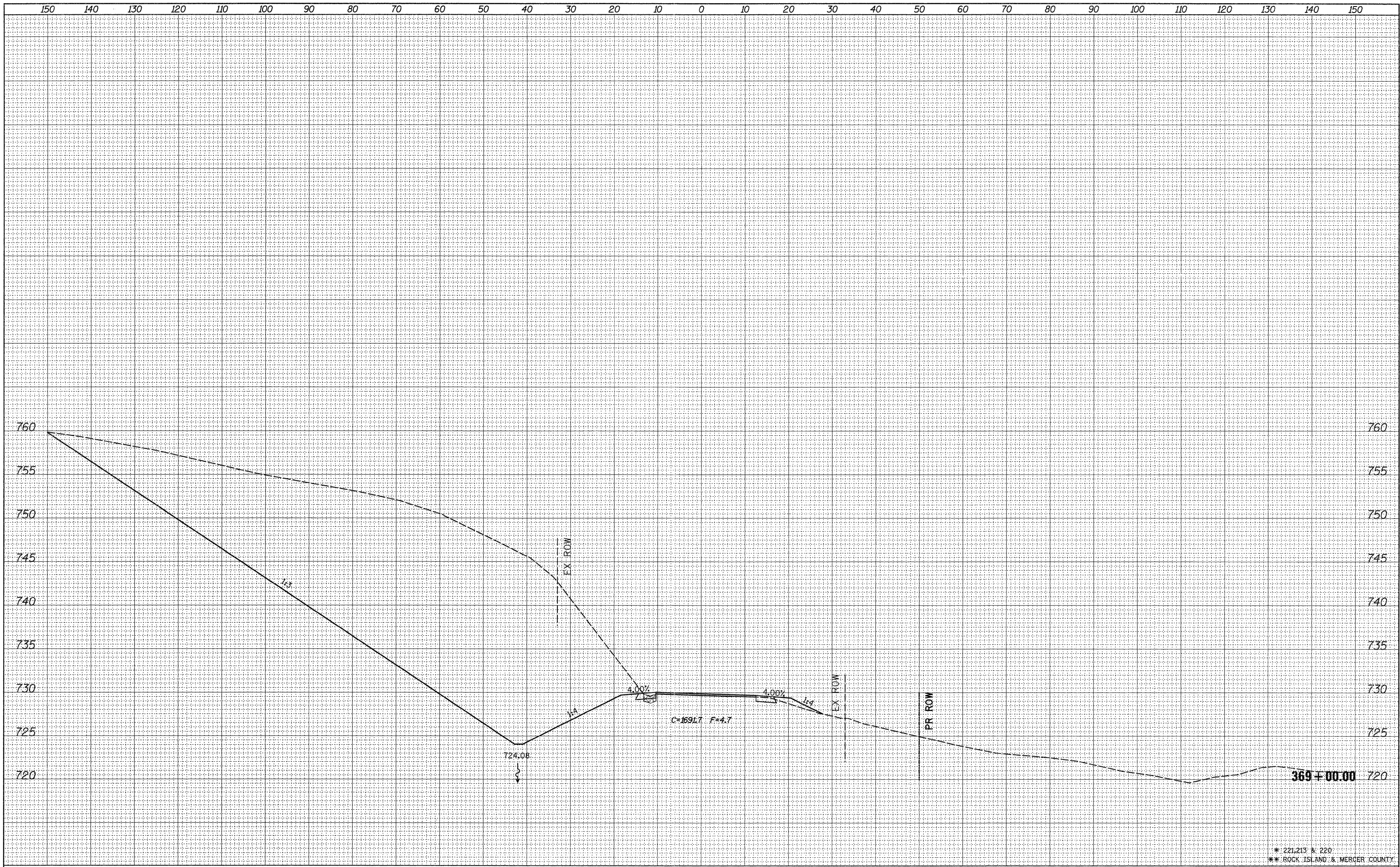


DATE	
BY	
SURVEYED	
PLOTTED	
NOTE BOOK	
TEMPLATE	
AREAS CHECKED	
NO.	

DATE	
BY	
SURVEYED	
PLOTTED	
NOTE BOOK	
TEMPLATE	
AREAS CHECKED	
NO.	



* 221.213 & 220
 ** ROCK ISLAND & MERCER COUNTY

FILE NAME =	USER NAME = grantpm	DESIGNED -	REVISED -	STATE OF ILLINOIS DEPARTMENT OF TRANSPORTATION	IL 94 CROSS SECTIONS		F.A.S. RTE.	SECTION	COUNTY	TOTAL SHEETS	SHEET NO.	
c:\pw\work\pwr\dot\grantpm\d0184077\0212307-shd.xml.dgn		DRAWN -	REVISED -		SCALE:	SHEET NO.	OF SHEETS	STA. 369+00.00 TO STA. 369+00.00	19,20RS-2	**	231	217
PLOT SCALE = 10.0000' / in.		CHECKED -	REVISED -		CONTRACT NO. 64D72							
PLOT DATE = Thu Jun 23 07:47:44 2011		DATE -	REVISED -		ILLINOIS FED. AID PROJECT							