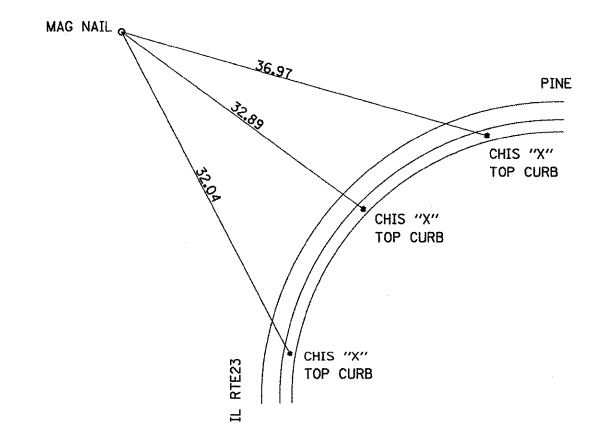


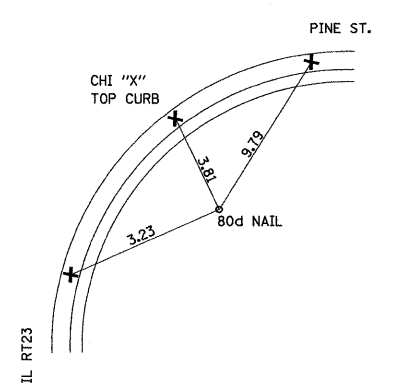
- X - TREE REMOVAL
- A - ADJUST
- AN - ADJUST WITH NEW FRAME & LID
- R - REMOVE
- RM - REMOVE TO MAINTAIN FLOW

BENCHMARK #413:
CHIS "X" TOP E EDGE MAST ARM FDN
@ SW QUAD IL 23 & PINE ST.
EL.=882.95

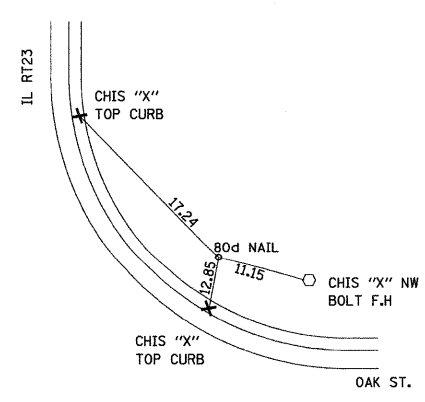
BENCHMARK #412:
CHIS "X" TOP NW BOLT F.H. IN
NE QUAD IL 23 & OAK ST.
EL.=882.58



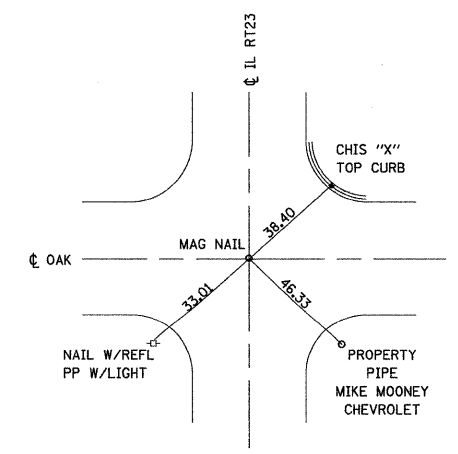
STA. 29+52.25 RT23
60+00.00 PINE



CP 23502 - STA.29+76.25 -24.009' LT



CP 23513 - STA.33+26.70 - 23.965' LT



STA. 33+48.86 RT23
70+00.00 OAK

FILE NAME = 0366983-SHT-PLAN-29-35.DGN	USER NAME = ---	DESIGNED - DJD	REVISED - ---	STATE OF ILLINOIS DEPARTMENT OF TRANSPORTATION	PLAN - IL 23		F.A.P. RTE. 68	SECTION (28)N, TS & I	COUNTY DEKALB	TOTAL SHEETS 120	SHEET NO. 18	
PLOT SCALE = 1"=20'	CHECKED - DJD	REVISIED - ---	SCALE: 1"=20'		SHEET NO. ___ OF ___ SHEETS	STA. 29+00 TO STA. 35+00	CONTRACT NO. 66983					
PLOT DATE = 01/11	DATE - 01/11	REVISIED - ---	FED. ROAD DIST. NO. _ ILLINOIS FED. AID PROJECT									