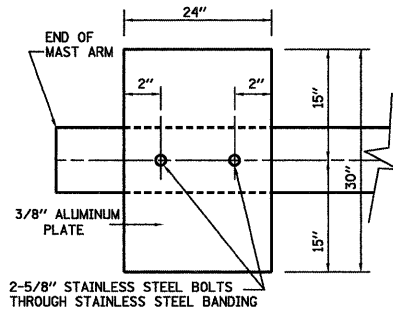


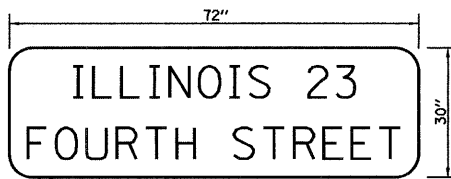
ELECTRICAL LOAD FOR INTERSECTION				
STREET NAME	COMPONENT	NUMBER	WATTAGE EACH	BURNTIME %
FOURTH STREET (IL 23)	RED	6	10	58
	YELLOW	6	22	4
	GREEN	6	12	38
		4	6	100
		4	6	13
LINCOLN HWY (IL 38)	RED	11	10	75
	YELLOW	11	22	4
	GREEN	11	12	21
		4	6	100
		4	6	13
TRAFFIC SIGNAL CABINET	CONTROLLER	1	6	100
	UPS	1	50	100
	EMERGENCY VEHICLE PREEMPT	4	--	--
LIGHTING	LUMINAIRE	6	250	50

AGENCY RESPONSIBLE FOR TRAFFIC SIGNAL ENERGY CHARGES:
CITY OF DEKALB

NOTE:
DAMPENING DEVICE SHALL CONSIST OF A 24" X 30" TYPE 1, UNPAINTED ALUMINUM SIGN STOCK MOUNTED HORIZONTALLY ON TOP OF MAST ARM WITH THE 30" LENGTH PERPENDICULAR TO THE ARM. COST OF THE DAMPENING DEVICE IS INCLUDED IN THE MAST ARM PAY ITEM.

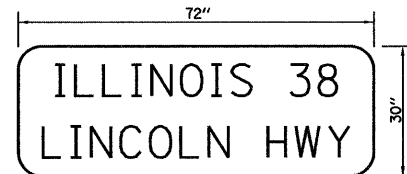


NOTE:
MOUNT DAMPENING PLATE TO END OF EACH TRAFFIC SIGNAL MAST ARM.
DAMPENING PLATE DETAIL - TOP VIEW



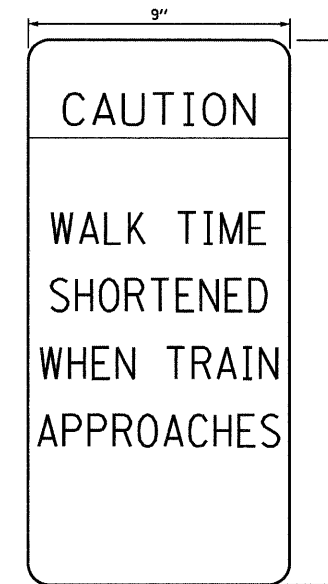
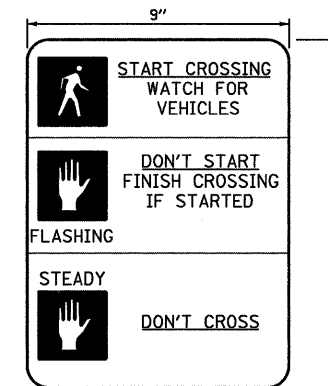
TYPE ZZ SHEETING REQUIRED
6" D SERIES LETTERS (CITY STREET LETTERING)
8" D SERIES LETTERS (STATE ROUTE LETTERING)
2 SIGNS REQUIRED = 15.0 SQ. FT. EACH
= 30.0 SQ. FT. TOTAL

THIS STREET NAME SIGN SHALL BE PLACED ON THE MAST ARMS PARALLEL WITH FOURTH STREET (IL 23)



TYPE ZZ SHEETING REQUIRED
6" D SERIES LETTERS (CITY STREET LETTERING)
8" D SERIES LETTERS (STATE ROUTE LETTERING)
2 SIGNS REQUIRED = 15.0 SQ. FT. EACH
= 30.0 SQ. FT. TOTAL

THIS STREET NAME SIGN SHALL BE PLACED ON THE MAST ARMS PARALLEL WITH LINCOLN HIGHWAY (IL 38)



X10-I100

THE CONTRACTOR SHALL SUPPLY AND MOUNT ONE OF EACH SIGN AT EACH TRAFFIC SIGNAL STRUCTURE WITH A PEDESTRIAN SIGNAL HEAD. THIS SHALL BE INCLUDED IN THE COST OF THE PEDESTRIAN SIGNAL HEAD PAY ITEM.

