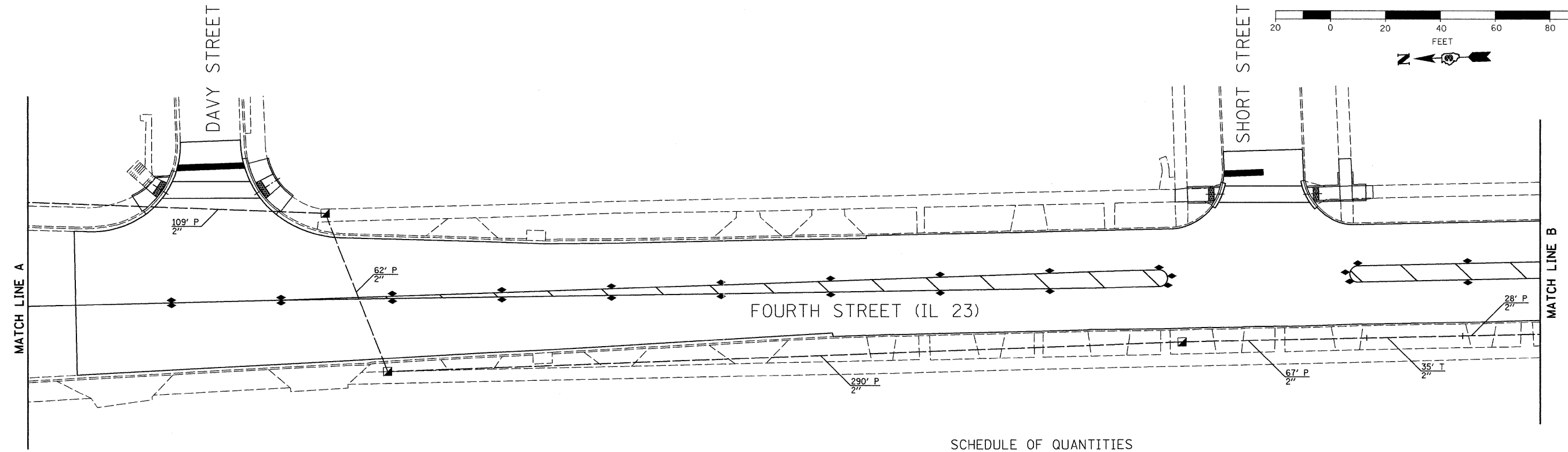
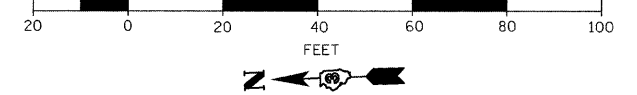


GRAPHIC SCALE



TRAFFIC SIGNALS LEGEND

EXISTING	PROPOSED	
		CONTROLLER CABINET
		CONDUIT
		HANDHOLE
		DOUBLE HANDHOLE

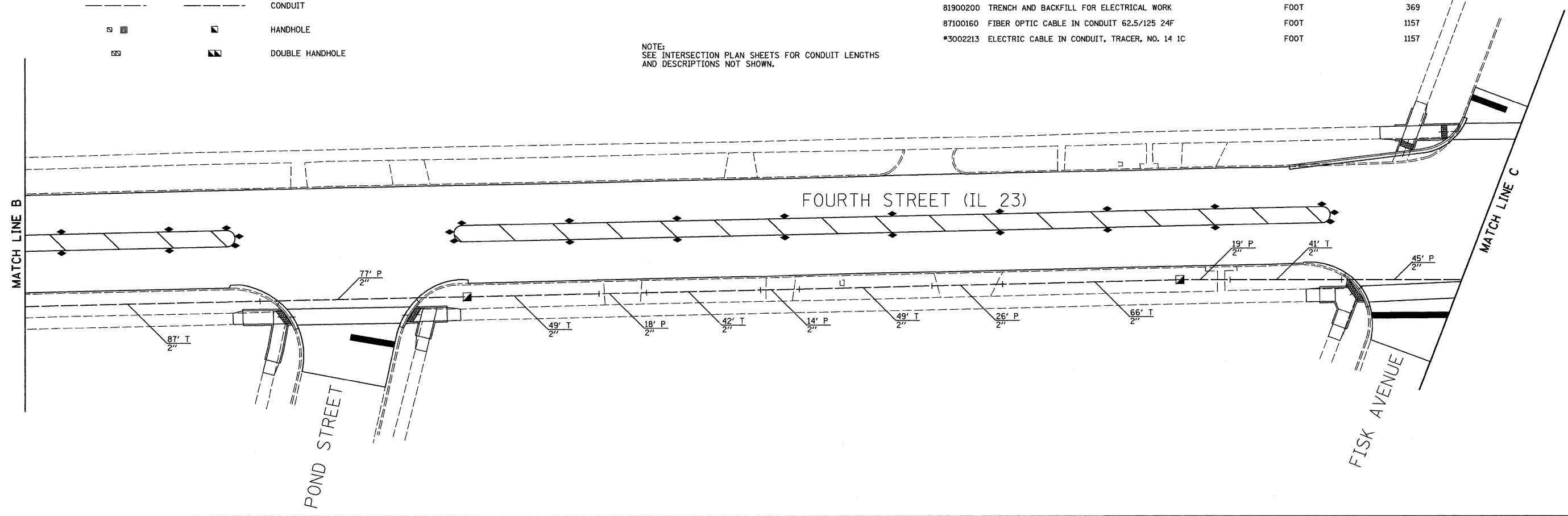
CONSTRUCTION NOTES:

1. NEW AND EXISTING HANDHOLES SHALL BE USED AS SHOWN.

NOTE:
SEE INTERSECTION PLAN SHEETS FOR CONDUIT LENGTHS
AND DESCRIPTIONS NOT SHOWN.

SCHEDULE OF QUANTITIES

ITEM NO.	DESCRIPTION	UNIT	TOTAL QUANTITY
81012600	CONDUIT IN TRENCH, 2" DIA., PVC	FOOT	369
81021330	CONDUIT PUSHED, 2" DIA., PVC	FOOT	755
81400700	HANDHOLE, PORTLAND CEMENT CONCRETE	EACH	5
81900200	TRENCH AND BACKFILL FOR ELECTRICAL WORK	FOOT	369
87100160	FIBER OPTIC CABLE IN CONDUIT 62.5/125 24F	FOOT	1157
*3002213	ELECTRIC CABLE IN CONDUIT, TRACER, NO. 14 1C	FOOT	1157



FILE NAME = 0366983-SHT-TS-INTERCONNECT.DGN
 USER NAME = --
 PLOT SCALE = 1" = 20'
 PLOT DATE = 01/11

DESIGNED - DJD
 DRAWN - ARR
 CHECKED - DJD
 DATE - 01/11
 REVISED - ---
 REVISED - ---
 REVISED - ---
 REVISED - ---

STATE OF ILLINOIS
 DEPARTMENT OF TRANSPORTATION

TRAFFIC SIGNAL INTERCONNECT PLAN
 FAP 68 (IL 23)/FOURTH STREET
 SCALE: 1" = 20' SHEET NO. ___ OF ___ SHEETS STA. _____ TO STA. _____

F.A.P. RTE.	SECTION	COUNTY	TOTAL SHEETS	SHEET NO.
68	(28)N, TS & I	DEKALB	120	83
CONTRACT NO. 66983				
ILLINOIS FED. AID PROJECT				