

DESIGNER: CLARK JONES
PHONE: (309)671-3452

PROJECT ENGINEER: NICK JACK
PHONE: (309)671-3451

F.A.P. RTE.	SECTION	COUNTY	TOTAL SHEETS	SHEET NO.
626	(42B)I	KNOX	8	1
Emergency Beam Bracing		ILLINOIS	CONTRACT NO. 68A68	

STATE OF ILLINOIS
DEPARTMENT OF TRANSPORTATION
DIVISION OF HIGHWAYS

**PROPOSED
HIGHWAY PLANS**

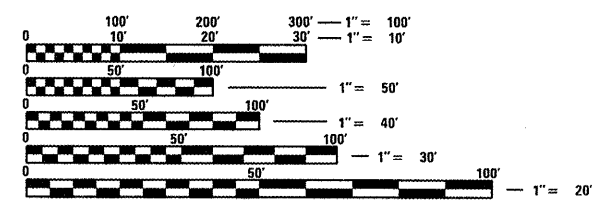
FAP ROUTE 626(IL.97)
SECTION (42B)I
DECK BEAM BRACING
KNOX COUNTY

INDEX OF SHEETS:

- 1. COVER SHEET
- 2. GENERAL NOTES
- 3. SUMMARY OF QUANTITIES
- 4. TYPICAL SECTIONS
- 5. SCHEDULE OF QUANTITIES
- 6. GENERAL LAYOUT
- 7-8. STRUCTURE DETAIL SHEETS

STANDARDS:

- 701001-02 701301-04
- 701006-03 701901-01
- 701201-04



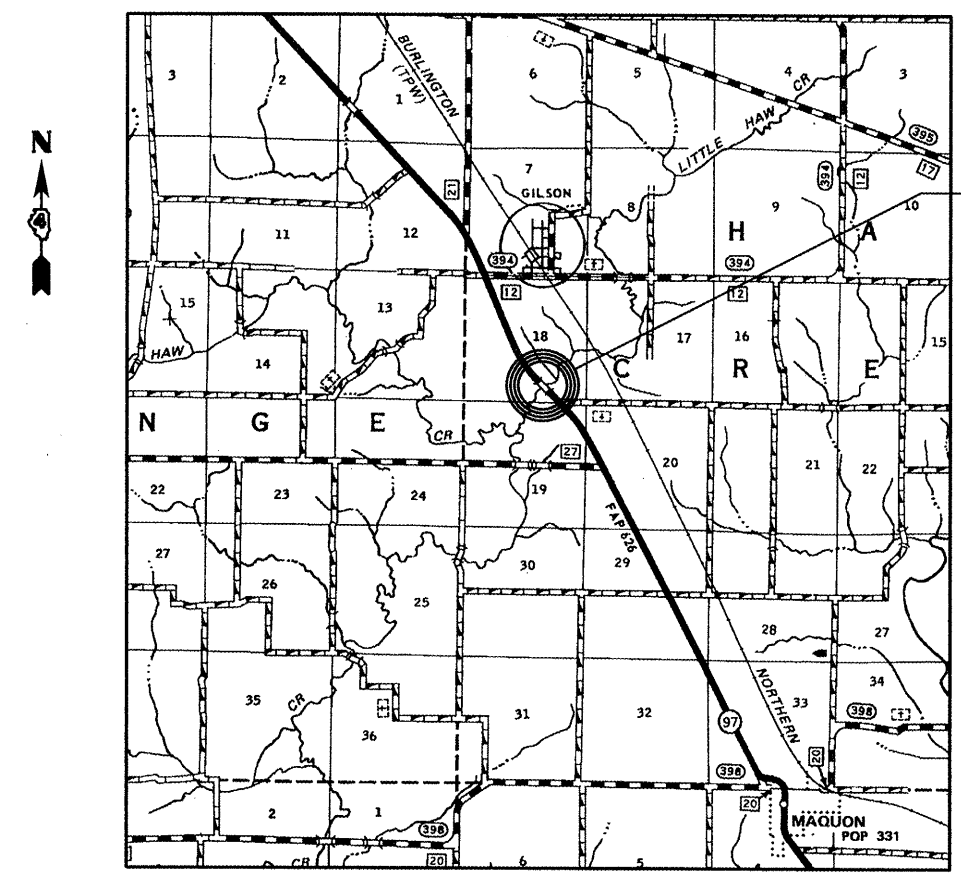
FULL SIZE PLANS HAVE BEEN PREPARED USING STANDARD ENGINEERING SCALES. REDUCED SIZED PLANS WILL NOT CONFORM TO STANDARD SCALES. IN MAKING MEASUREMENTS ON REDUCED PLANS, THE ABOVE SCALES MAY BE USED.

J.U.L.I.E.
JOINT UTILITY LOCATION INFORMATION FOR EXCAVATION
1-800-892-0123
OR 811

PROJECT ENGINEER: NICK JACK

CONTRACT 68A68 CAT.NO. 034722-00D

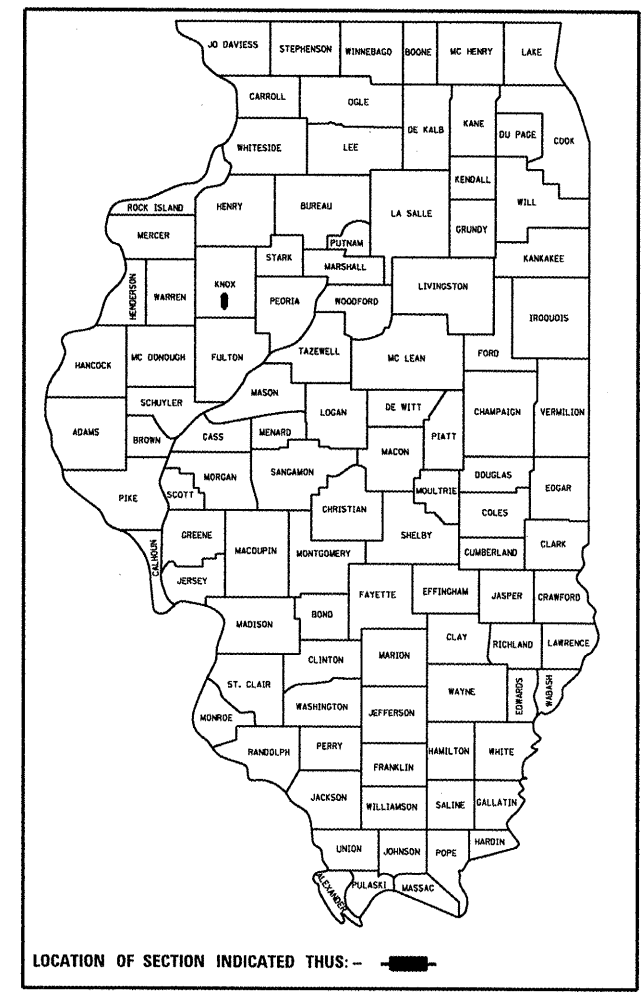
C-94-014-12



LITTLE HAW CREEK
(S.N. 048-0015)

DESIGN DESIGNATION
MINOR ARTERIAL
ADT = 2200 (2007)
SU = 80
MU = 100

D-94-012-12



LOCATION OF SECTION INDICATED THUS: —

EMERGENCY DECK BEAM BRACING OF BEAMS 5,6,7, & 11
ON STRUCTURE CARRYING IL.97 OVER LITTLE HAW CREEK
(SN048-0015), FOUR MILES NW OF MAQUON.

STATE OF ILLINOIS
DEPARTMENT OF TRANSPORTATION
DIVISION OF HIGHWAYS

SUBMITTED 8/11 20 11

Joseph E. Cowler
DEPUTY DIRECTOR OF HIGHWAYS, REGION ENGINEER

Aug 19 20 11
Scott E. Stitt, P.E.
ENGINEER OF DESIGN AND ENVIRONMENT

Aug 19 20 11
Christine M. Reed
DIRECTOR OF HIGHWAYS, CHIEF ENGINEER

PRINTED BY THE AUTHORITY
OF THE STATE OF ILLINOIS

GENERAL NOTES

PLAN DIMENSIONS AND DETAILS RELATIVE TO EXISTING STRUCTURE HAVE BEEN TAKEN FROM EXISTING PLANS AND ARE SUBJECT TO NOMINAL CONSTRUCTION VARIATIONS. IT SHALL BE THE CONTRACTOR'S RESPONSIBILITY TO VERIFY SUCH DIMENSIONS AND DETAILS IN THE FIELD AND MAKE NECESSARY APPROVED ADJUSTMENTS PRIOR TO CONSTRUCTION OR ORDERING OF MATERIALS. SUCH VARIATIONS SHALL NOT BE CAUSE FOR ADDITIONAL COMPENSATION FOR A CHANGE IN THE SCOPE OF THE WORK, HOWEVER, THE CONTRACTOR WILL BE PAID FOR THE QUANTITY ACTUALLY FURNISHED AT THE UNIT PRICE BID FOR THE WORK.

ENVIRONMENTAL REVIEWS

PRIOR TO USE OF ANY PROPOSED BORROW AREAS, USE (TEMPORARY ACCESS ROADS, DETOURS, RUN-AROUNDS, ETC.) AND/OR WASTE AREAS. THE CONTRACTOR SHALL FILE THE REQUIRED ENVIRONMENTAL RESOURCE REQUEST SURVEYS ACCORDING TO SECTION 107.22 OF THE STANDARD SPECIFICATIONS. THESE SURVEYS ARE REQUIRED IN ORDER FOR THE DEPARTMENT TO CONDUCT CULTURAL AND BIOLOGICAL RESOURCE SURVEYS FOR THE PROPOSED SITE.

PRIOR TO ANY WASTE MATERIALS BEING REMOVED FROM THE CONSTRUCTION SITE THE REQUIRED ENVIRONMENTAL RESOURCE SURVEYS WILL NEED TO BE OBTAINED AND FILED BY THE CONTRACTOR. EXCESS WASTE PRODUCTS REMOVED FROM THE CONSTRUCTION SITE SHALL BE DISPOSED OF AS REQUIRED IN SECTION 202.03 OF THE STANDARD SPECIFICATIONS.

ANY PROTRUDING METAL BARS SHALL BE REMOVED PRIOR TO THE DISPOSAL OF BROKEN CONCRETE AT APPROVED DISPOSAL SITES.

THE REQUIRED ENVIRONMENTAL RESOURCE DOCUMENTATION SHALL INCLUDE THE FOLLOWING:

- * BDE FORM 2289 (ENVIRONMENTAL SURVEY REQUEST)
- * A LOCATION MAP SHOWING THE SIZE LIMITS AND LOCATION OF THE USE AREA
- * SIGNED PROPERTY OWNER AGREEMENT FORM-D4 PI0100
- * COLOR PHOTOGRAPHS DEPICTING THE USE AREA
- * BORROW AREA ENTRY AGREEMENT FORM-D4 PI0101

PLEASE NOTE THAT A MINIMUM OF TWO WEEKS SHALL BE ALLOWED FOR THE DISTRICT TO OBTAIN THE REQUIRED ENVIRONMENTAL CLEARANCES.

COMMITMENTS

NO COMMITMENTS HAVE BEEN MADE FOR THIS PROJECT.

TRAFFIC CONTROL PLAN NOTES

1. FOR EACH 701201 STANDARD, ONE "45 MPH" (W13-1) SIGN SHALL BE PLACED ON EACH "ONE LANE ROAD AHEAD" SIGN. COST INCIDENTAL TO TRAFFIC CONTROL AND PROTECTION STANDARD 701201.
2. FOR EACH 701201 STANDARD, ONE (W12-1102) SIGN SHALL BE PLACED AT EACH APPROACH, 500' AFTER THE "ROAD CONSTRUCTION AHEAD" SIGN, BUT 500' PRIOR TO THE "ONE LANE ROAD AHEAD" SIGN. COST INCIDENTAL TO TRAFFIC CONTROL AND PROTECTION STANDARD 701201.
3. DUE TO THE VERTICAL PROFILE OF THE PROJECT AFFECTING SIGHT DISTANCES, THE TRAFFIC CONTROL FLAGGER POSITIONS SHALL REQUIRE FIELD ADJUSTMENT. THESE SHALL BE ESTABLISHED BY THE FIELD ENGINEER AND D4 TRAFFIC CONTROL TECHNICIAN PRIOR TO PROJECT START. CONSULT BDE MANUAL 33-4 FOR "STOPPING SIGHT DISTANCES".

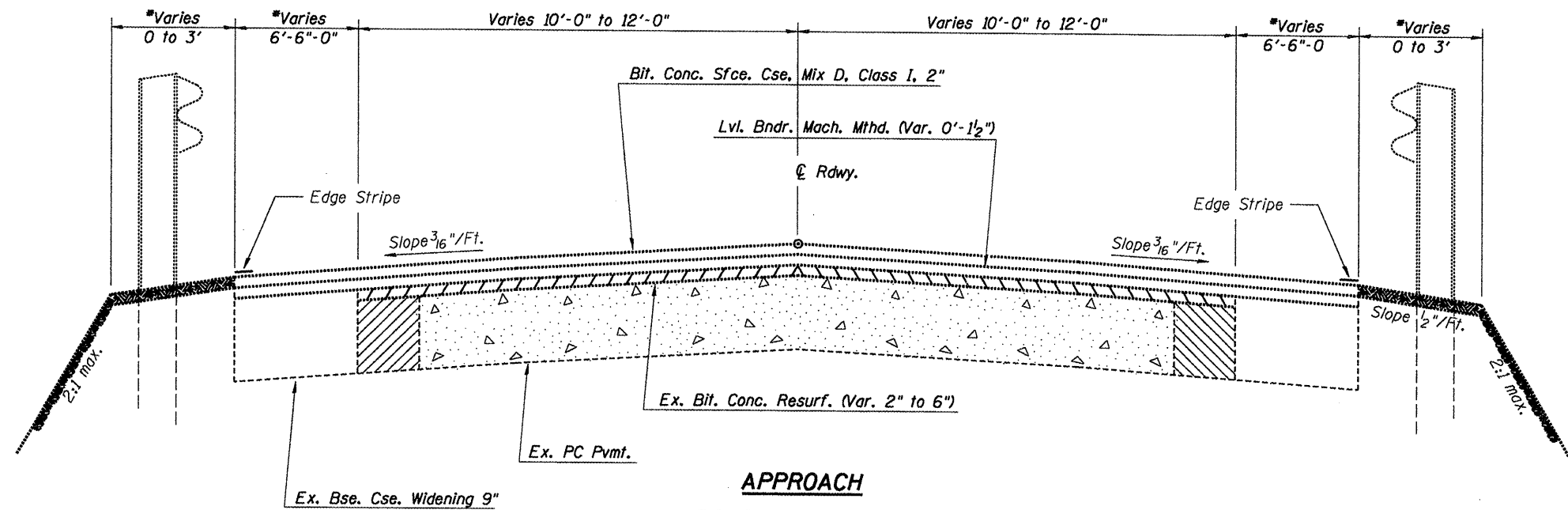
FILE NAME =	USER NAME = jonesce	DESIGNED -	REVISED -	STATE OF ILLINOIS DEPARTMENT OF TRANSPORTATION	GENERAL NOTES & COMMITMENTS SN. 048-0015	F.A.P. RTE.	SECTION	COUNTY	TOTAL SHEETS	SHEET NO.
S:\DEN\DRIFT\STD&PLNS\sqd\BRIDGES\BRIDGE CONTRACTS\PPC BEAM REP\68A68 SN048-0015	RAW\lowCrk.Br.dwg	CHECKED -	REVISED -			626	(42B1)	KNOX	8	2
PLOT SCALE = 6003.7711' / in.	DATE - 08/08/2011	DATE -	REVISED -			Bracing -IL.97 over HAW CRK.		CONTRACT NO. 68A68		
PLOT DATE = 8/11/2011	DATE -	DATE -	REVISED -			SCALE: _____	SHEET NO. ___ OF ___ SHEETS	STA. 536+91 TO STA. 537+29	ILLINOIS FED. AID PROJECT	

SUMMARY OF QUANTITIES

100% STATE FUNDING-0014
KNOX COUNTY

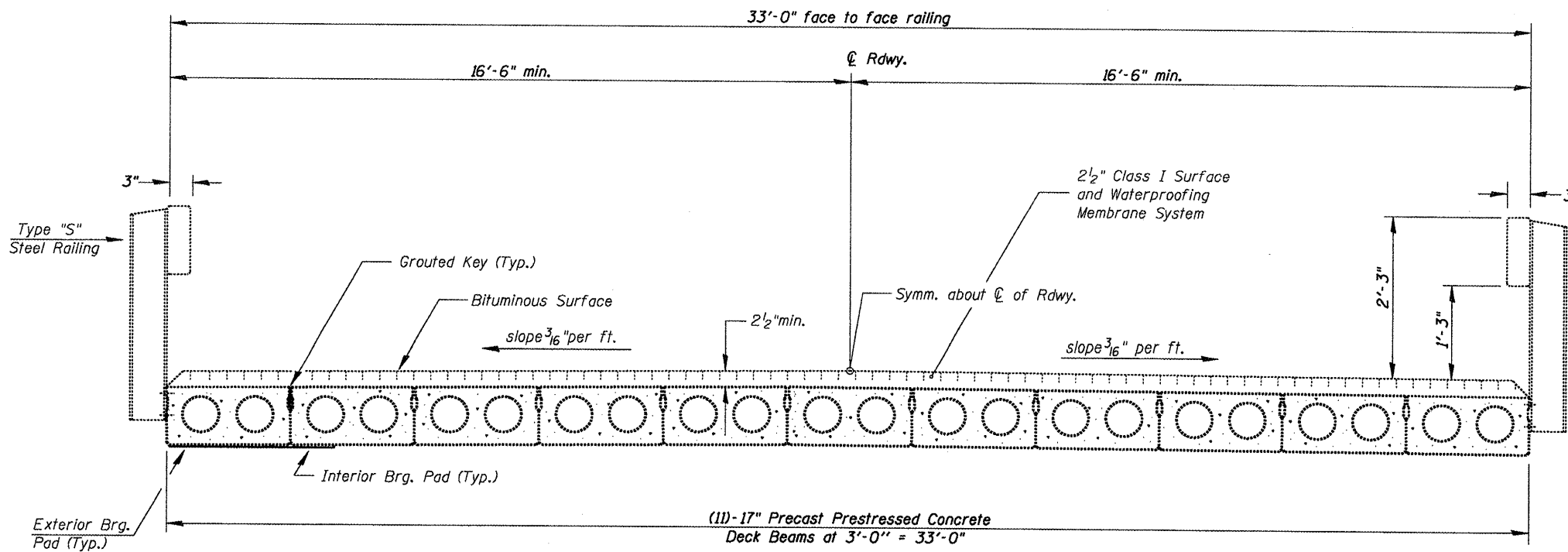
CODE NO.	ITEM	UNIT	RURAL	TOTAL
*	25100630 EROSION CONTROL BLANKET	SOYD	500	500
	50500405 FURNISHING AND ERECTING STRUCTURAL STEEL	POUND	20,150	20,150
	67100100 MOBILIZATION	LSUM	1	1
	70100450 TRAFFIC CONTROL AND PROTECTION, STANDARD 701201	LSUM	1	1

* Seeding of minor areas shall be included in cost of Erosion Control Blanket.

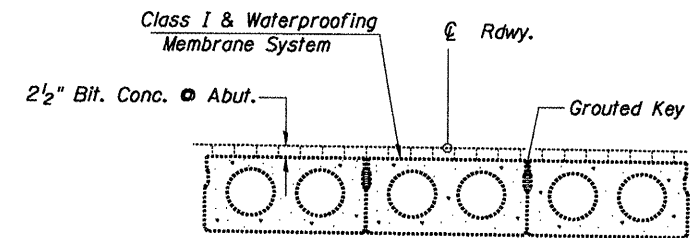


**APPROACH
ROADWAY SECTION**

Sta. 536+00 to Sta. 536+71 *0" to 6'-6"
 Sta. 537+49 to Sta. 538+00 *6'-6" to 0"



BRIDGE CROSS SECTION



**CLASS I DETAIL &
WATERPROOFING TREATMENT**

FILE NAME =	USER NAME = jonesce	DESIGNED -	REVISED -	STATE OF ILLINOIS DEPARTMENT OF TRANSPORTATION	TYPICAL SECTIONS SN. 048-0015		F.A.P. RTE.	SECTION	COUNTY	TOTAL SHEETS	SHEET NO.	
S:\GEN\DRFT\STD&PLNS\Squad\BRIDGES\BRIDGE CONTRACTS\PPC BEAM REP\68A68 SN048-0015.DWG	DRAWN by CrkBrn	CHECKED -	REVISED -		SCALE:	SHEET NO. OF SHEETS	STA. 536+91 TO STA. 537+29	626	(42B)-1	KNOX	8	4
PLOT SCALE = 5003.7711' / in.	DATE = 08/08/2011	DATE = 08/08/2011	REVISED -				Bracing -IL-97 over HAW CRK.		CONTRACT NO. 68A68			
PLOT DATE = 8/11/2011							ILLINOIS FED. AID PROJECT					

SCHEDULE OF QUANTITIES

MOBILIZATION SCHEDULE

LOCATION	UNIT	QUANTITY
Jobsite	LSUM	1.0

T.C.& P STANDARD 701201

LOCATION	UNIT	QUANTITY
Project Limits	LSUM	1.0

FURNISH & ERECT STRUCTURAL STEEL

LOCATION	UNIT	QUANTITY
Under Existing Superstructure	POUND	20,150

EROSION CONTROL BLANKET

LOCATION	UNIT	QUANTITY
Jobsite Embankment & R.O.W.	SQYD	500

FILE NAME =	USER NAME = jonesco	DESIGNED -	REVISED -
S:\GEN\DRFT\STD&PLNS\sqd\BRIDGES\BRIDGE CONTRACTS\PPC BEAM REP\68A68 SN048-00	SDRAWN\lowCrk\Brack\68A68 SN048-0015 LittleH	CHECKED -	REVISED -
PLOT SCALE = 5893.7711' / in.	DATE = 08/08/2011	REVISD -	REVISD -

**STATE OF ILLINOIS
DEPARTMENT OF TRANSPORTATION**

**SCHEDULE OF QUANTITIES
SN. 048-0015**

SCALE: _____ SHEET NO. ____ OF ____ SHEETS STA. 536+91 TO STA. 537+29

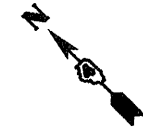
F.P. RTE.	SECTION	COUNTY	TOTAL SHEETS	SHEET NO.
626	(42B)-1	KNOX	8	5
Bracing -IL.97 over HAW CRK.			CONTRACT NO. 68A68	
ILLINOIS FED. AID PROJECT				

B.M. - Chisled square on NW abutment of bridge,
Sta. 536+91 Rt. Elev. 606.60

T 10N- R3E- 4th P.M.
SECTION 18

GERALD W. VARNER

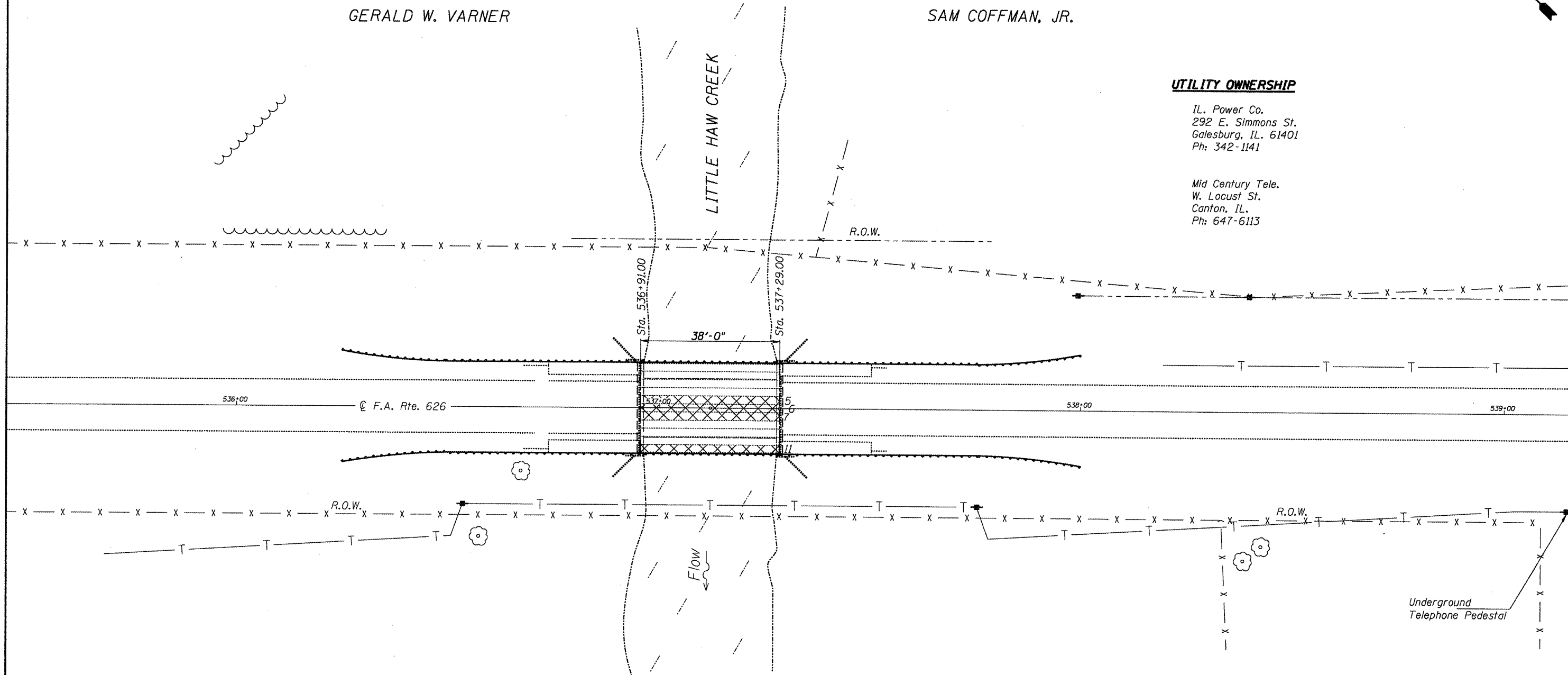
SAM COFFMAN, JR.



UTILITY OWNERSHIP

IL. Power Co.
292 E. Simmons St.
Galesburg, IL. 61401
Ph: 342-1141

Mid Century Tele.
W. Locust St.
Canton, IL.
Ph: 647-6113



PLAN

DAVID V. McBRIDE

CLAIR MOORE

LEGEND

▨ PPC Beam to be Braced

NOTES
When it is necessary for the Contractor to place and store materials and equipment on State owned R.O.W. the appearance and condition of the affected sod area shall be left as it was found and according to the discretion of the Engineer. All necessary work and materials seeding minor areas shall be included in cost of EROSION CONTROL BLANKET. See section 107 of the Standard Specifications for requirements concerning Contractor access and protection & preservation of the natural area and waterway at and around the project.

FILE NAME =	USER NAME = jonesce	DESIGNED -	REVISED -	STATE OF ILLINOIS DEPARTMENT OF TRANSPORTATION	GENERAL LAYOUT SN.048-0015		F.A.P. RTE. 626	SECTION (42B)I	COUNTY KNOX	TOTAL SHEETS 8	SHEET NO. 6	
S:\DEN\DRIFT\STD&PLNS\Squad\BRIDGES\BRIDGE CONTRACTS\PPC BEAM REP\68A68 SN048-0015	DRAWN\lavCrk\Braced\SN048-0015 LittleH	CHECKED -	REVISED -		SCALE: _____	SHEET NO. _____ OF _____ SHEETS	STA. 536+91 TO STA. 537+29	Bracing -IL.97 over HAW CRK. CONTRACT NO. 68A68				
PLOT SCALE = 5003.7711' / in.		DATE - 08/08/2011	REVISED -		ILLINOIS FED. AID PROJECT							

GENERAL NOTES

All structural steel shall conform to AASHTO Classification M-270 Gr. 36, unless otherwise noted.

Plan dimensions and details relative to existing plans are subject to nominal construction variations. The Contractor shall field verify existing dimensions and details affecting new construction and make necessary approved adjustments prior to construction or ordering of materials. Such variations shall not be cause for additional compensation for a change in scope of the work, however, the Contractor will be paid for the quantity actually furnished at the unit price bid for the work.

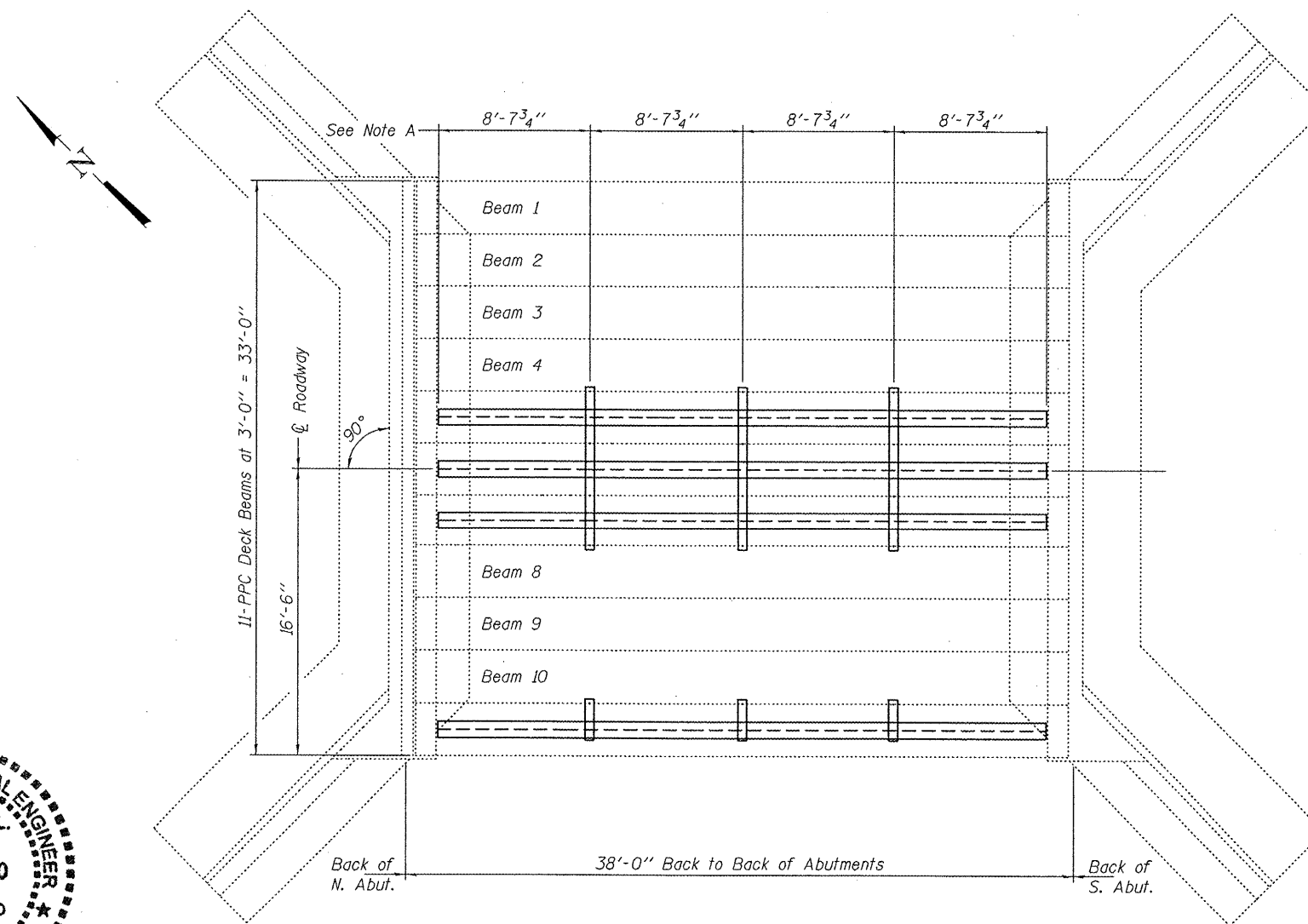
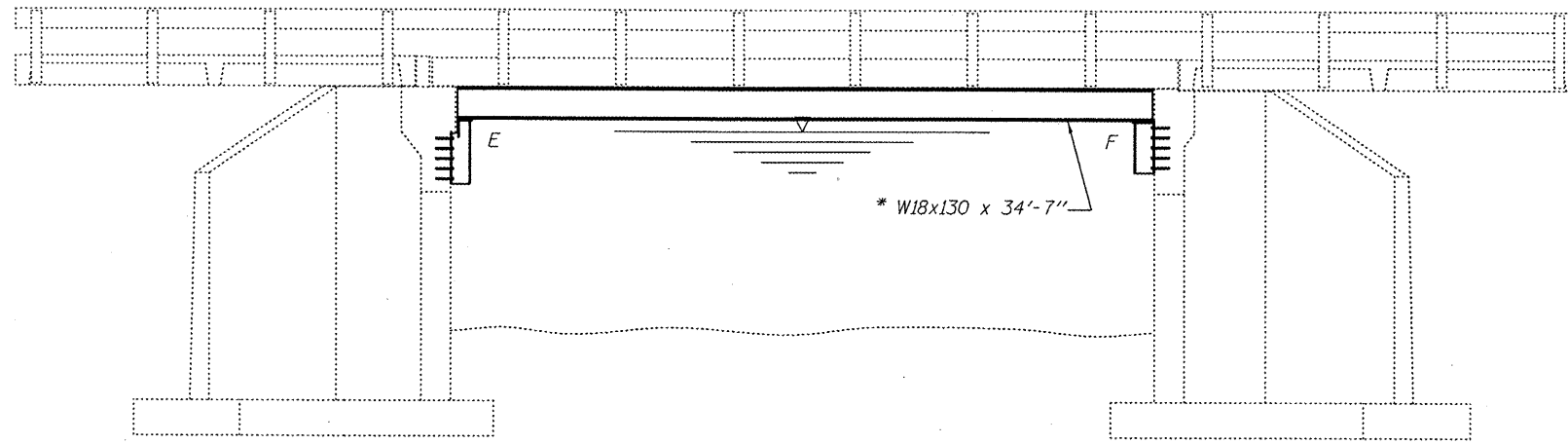
The contractor is advised that the existing PPC Deck Beams are in a deteriorated condition with reduced load carrying capacity. It is the contractor's responsibility to account for the condition of the beams when developing construction procedures.

See Section 584 of the Standard Specifications for Epoxy Grouting of Threaded Rods; Minimum embedment 9".

If the contractor's procedure for placement of beams involves placement of cranes or other heavy equipment on the bridge, a detailed procedure shall be submitted to the Engineer for approval. The procedure shall include calculations, prepared and sealed by an Illinois Licensed Structural Engineer, verifying that the equipment and procedure used will not overstress the existing beams. To distribute load to multiple beams and protect the existing surface, in all cases a double layer mat of heavy timbers shall be used at all times under crane tracks or wheels and any outriggers in the down position. If necessary, shims shall be used under the crane mat to ensure uniform contact with the underlying beams.

The cost of epoxy grouting threaded rods on the abutments and beams shall be included with Furnishing and Erecting Structural Steel.

The Contractor has the option of using used steel. See Special Provisions..



* Contractor is to verify beam length prior to ordering material. Other sections meeting the section modulus requirements shown may be allowed subject to approval by the Bureau of Bridges and Structures. Maximum Girder depth = 18". No additional payment will be allowed if the Contractor chooses a heavier steel section than the one specified in the plans. (Min. $S_x = 256 \text{ in.}^3$)

Note A:
 ⊕ Transverse Tie R's (3 per span).
 Place additional shims at midpoints between Tie R's. Securely weld shims to top flange of support beam. Minimum shim size is 6" x flange width.



Expires: November 30, 2012

DESIGNED - <i>[Signature]</i>	EXAMINED - <i>[Signature]</i>	DATE - AUGUST 18, 2011
CHECKED - <i>[Signature]</i>	PASSED - <i>[Signature]</i>	REVISED
DRAWN - Kyle M. Steffen		REVISED
CHECKED - <i>[Signature]</i>		

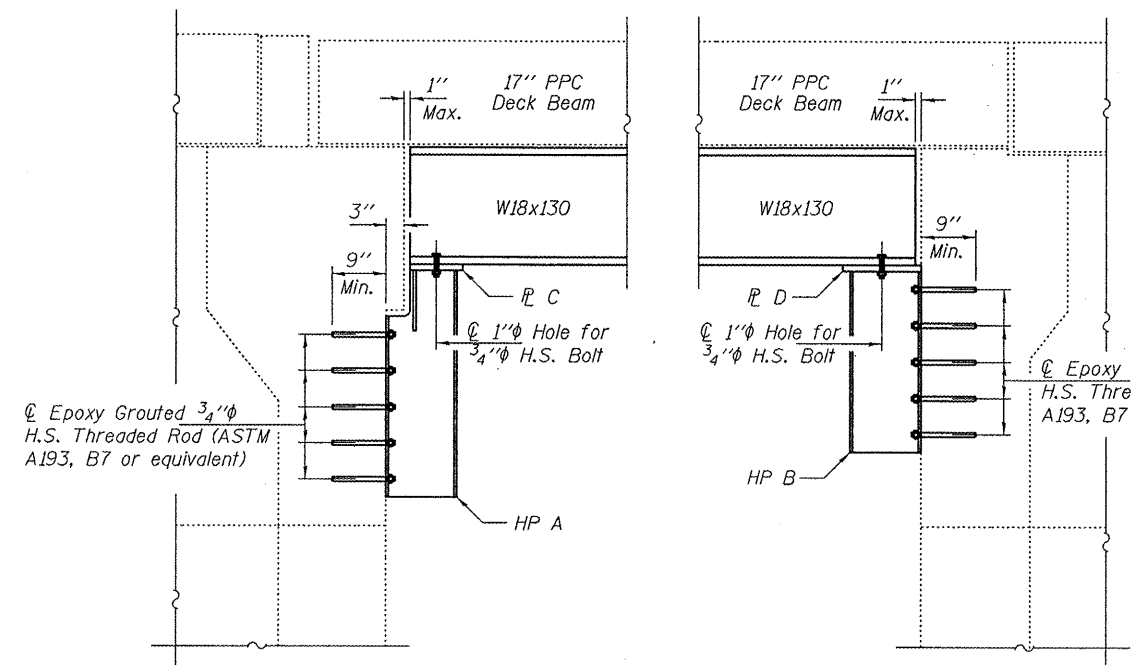
STATE OF ILLINOIS
 DEPARTMENT OF TRANSPORTATION

GENERAL PLAN & ELEVATION
 ILLINOIS ROUTE 97 OVER LITTLE HAW CREEK
 SN 048-0015

F.A.P. RTE. 626	SECTION 142B1	COUNTY KNOX	TOTAL SHEETS 8	SHEET NO. 7
SHEET NO. 1 OF 2 SHEETS				CONTRACT NO. 68A68
ILLINOIS FED. AID PROJECT				

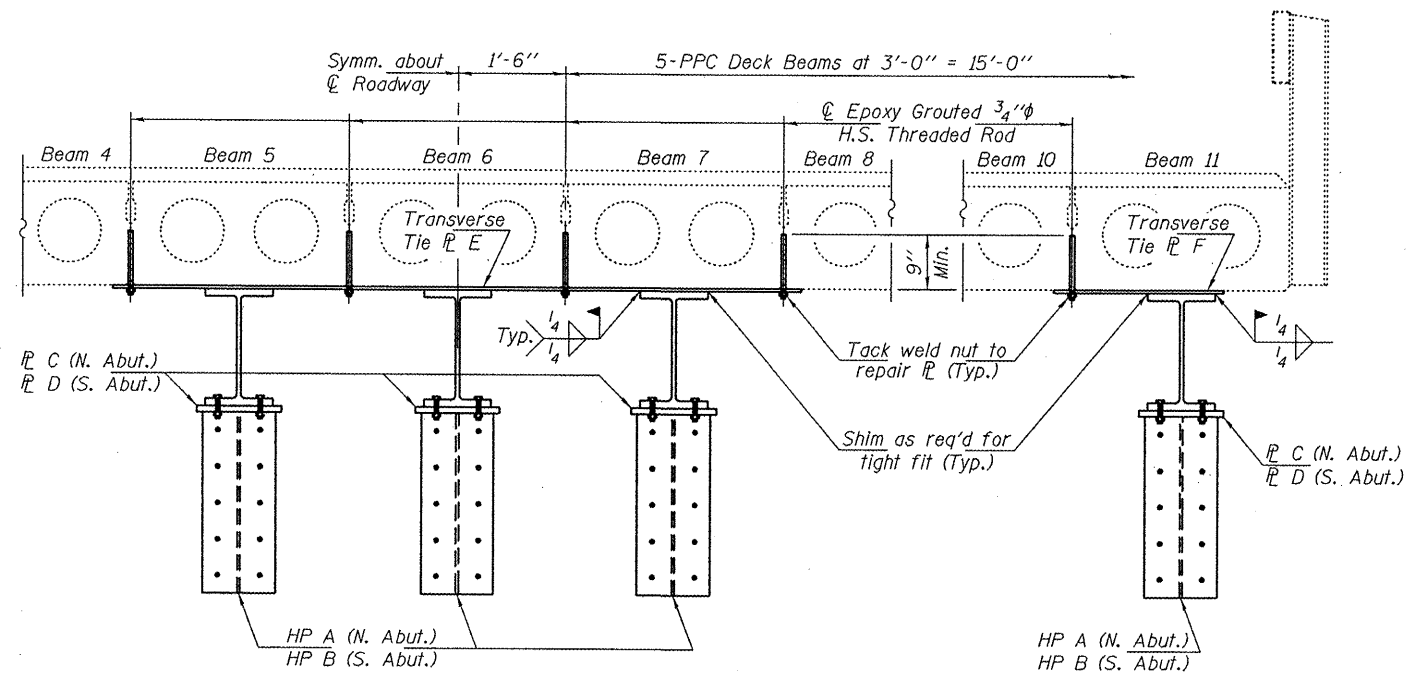
TOTAL BILL OF MATERIAL

ITEM	UNIT	QUANTITY
Furnishing and Erecting Structural Steel	Pound	20,150



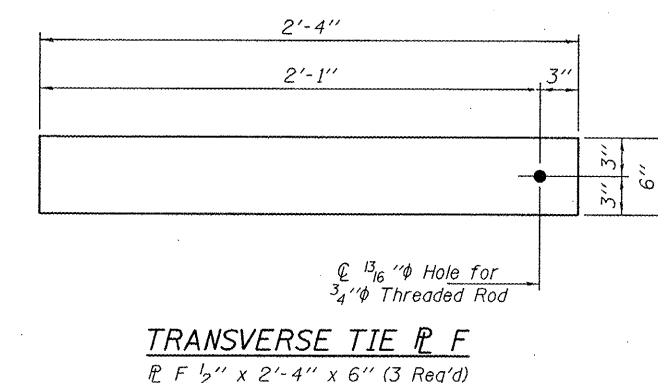
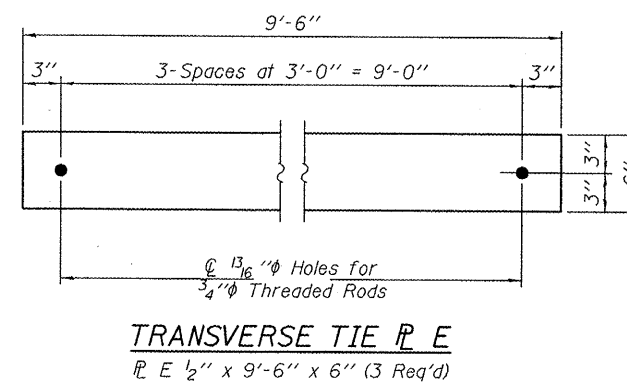
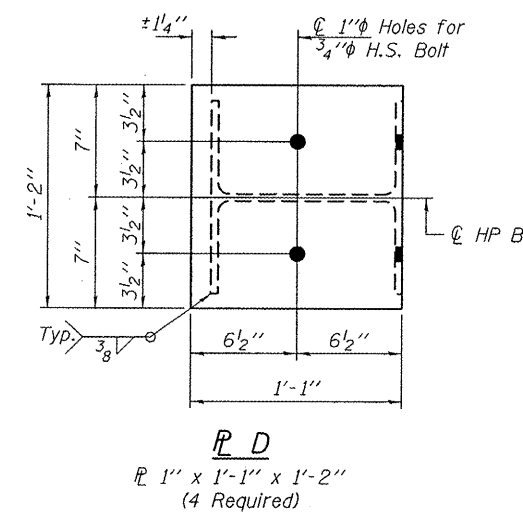
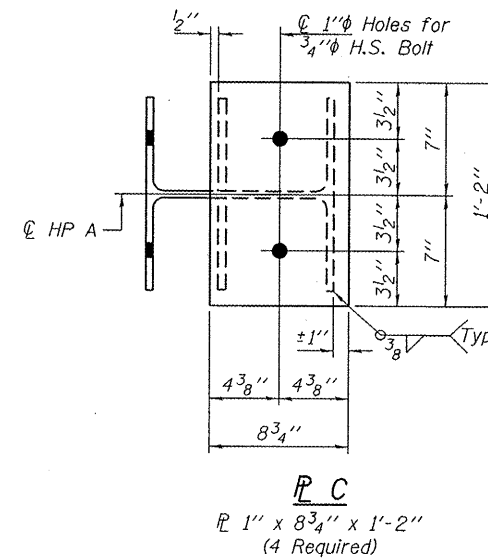
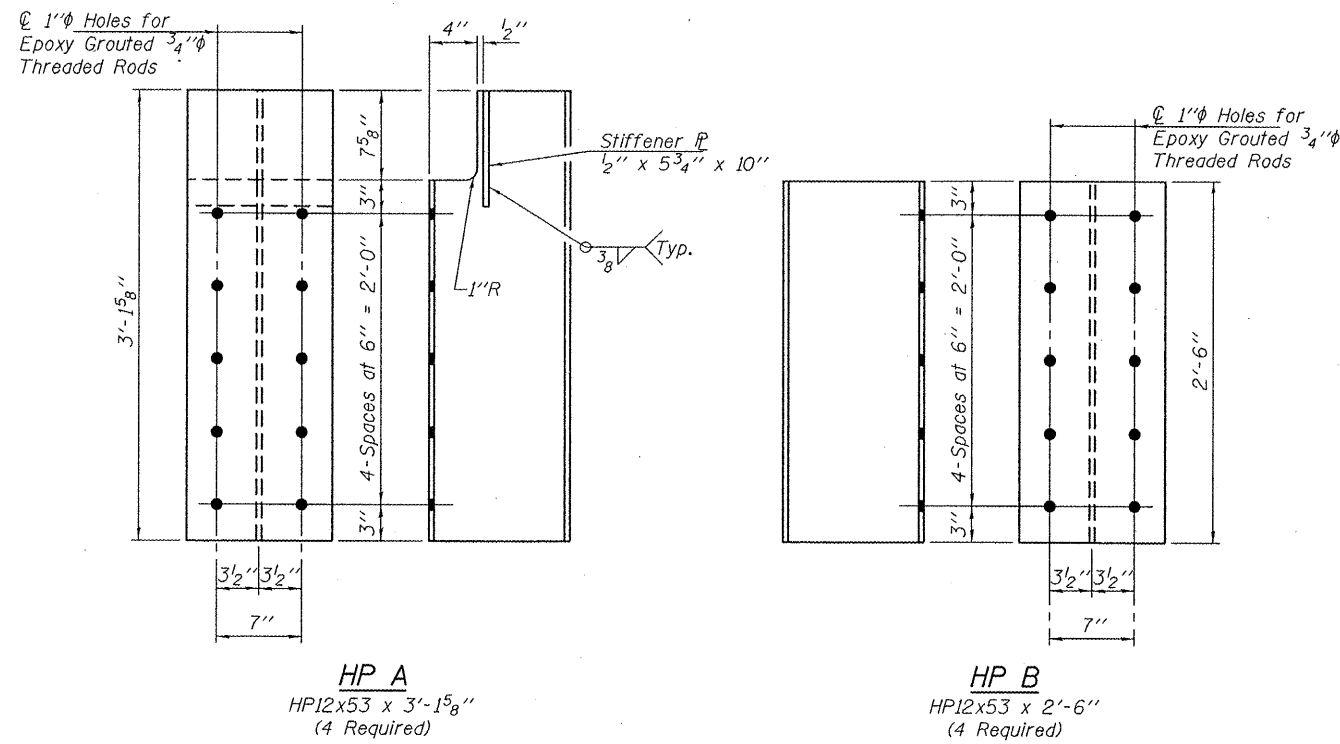
SECTION THRU N. ABUT.

SECTION THRU S. ABUT.



PARTIAL CROSS-SECTION

(Looking South)
 S. Abut. shown, N. Abut. similar by rotation except as noted.



DESIGNED - GGE	EXAMINED - <i>Jaime F. Joffe</i> ACTING ENGINEER OF STRUCTURAL SERVICES	DATE - AUGUST 18, 2011
CHECKED - ATH	PASSED - <i>Carl P. ...</i> ACTING ENGINEER OF BRIDGES AND STRUCTURES	REVISED
DRAWN - Kyle M. Steffen		REVISED
CHECKED - GGE ATH		

STATE OF ILLINOIS
DEPARTMENT OF TRANSPORTATION

DECK BEAM SUPPORT DETAILS
SN 048-0015
 SHEET NO. 2 OF 2 SHEETS

F.A.P. RTE. 626	SECTION (42B)I	COUNTY KNOX	TOTAL SHEETS 8	SHEET NO. 8
CONTRACT NO. 68A68				
ILLINOIS FED. AID PROJECT				