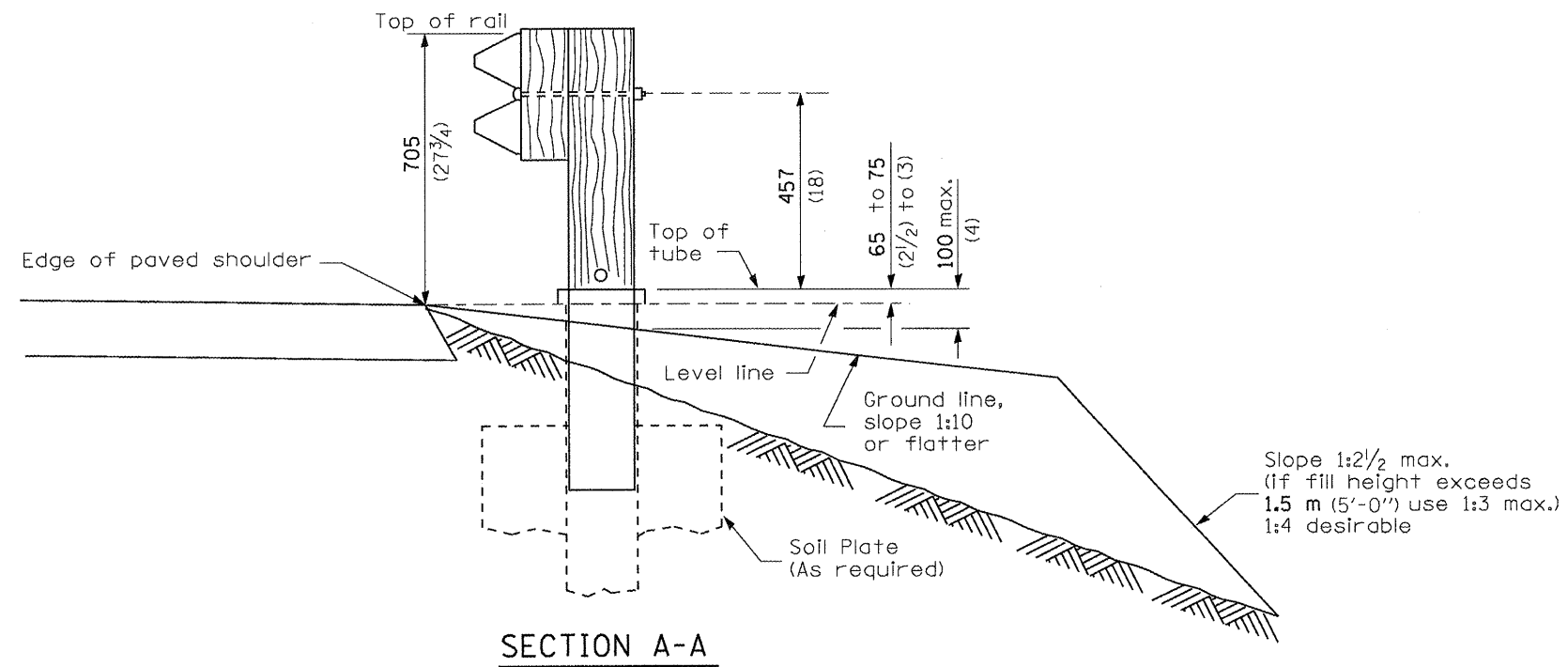


**SHOULDER WIDENING TRANSITION
FOR TANGENT TERMINAL**



SECTION A-A

GENERAL NOTES

50:1 Taper required so the guardrail head will not encroach on the shoulder.

All slope ratios are expressed as units of vertical displacement to units of horizontal displacement (V:H).

All dimensions are in millimeters (inches) unless otherwise shown.

FILE NAME *	USER NAME = Spksgw	DESIGNED -	REVISED -	STATE OF ILLINOIS DEPARTMENT OF TRANSPORTATION	PRE-MGS HIGHWAY STANDARD 630301-03 SHOULDER WID. FOR TYPE 1 (SPL) GUARDRAIL TERMINAL EFFECTIVE 4-1-06			F.A. RTE.	SECTION	COUNTY	TOTAL SHEETS	SHEET NO.	
c:\pwork\pwork\spksgw\d026229\0672E39-shd-207-630301-03_ShldWidenForType1Grdr	DRAWN	REVIS	REVIS		SCALE:	SHEET NO.	OF SHEETS	STA.	TO STA.	ILLINOIS FED. AID PROJECT	VAR	18	11
PLDT SCALE = 0:26.000 ms / in.	CHECKED -	REVIS	REVIS		(SHEET 1 OF 2)			CONTRACT NO. 72E39					
PLDT DATE = Apr-01-2011 09:43:58AM	DATE -	REVIS	REVIS										

* 06 CABLE/GUARDRAIL REPAIR 2011