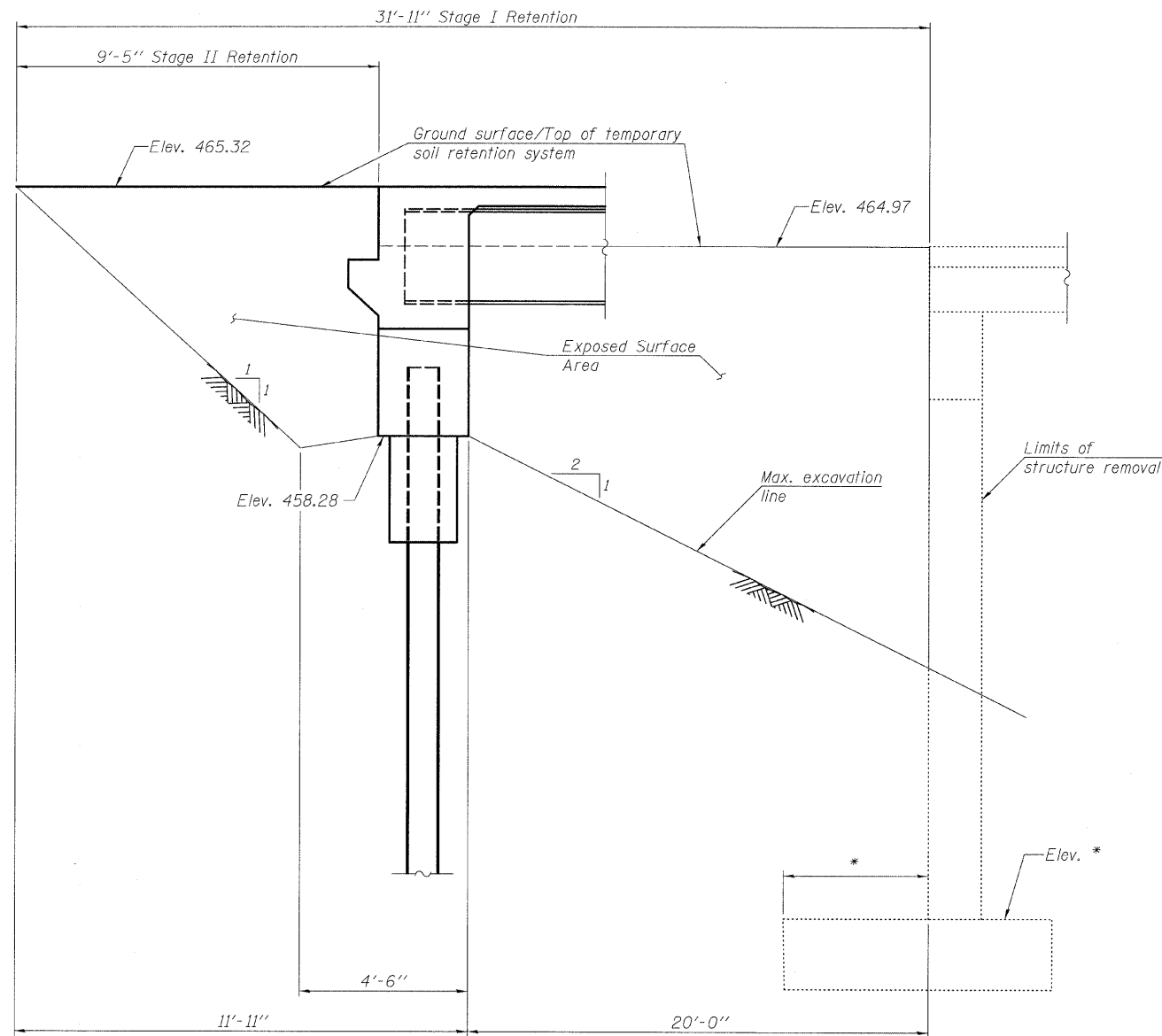
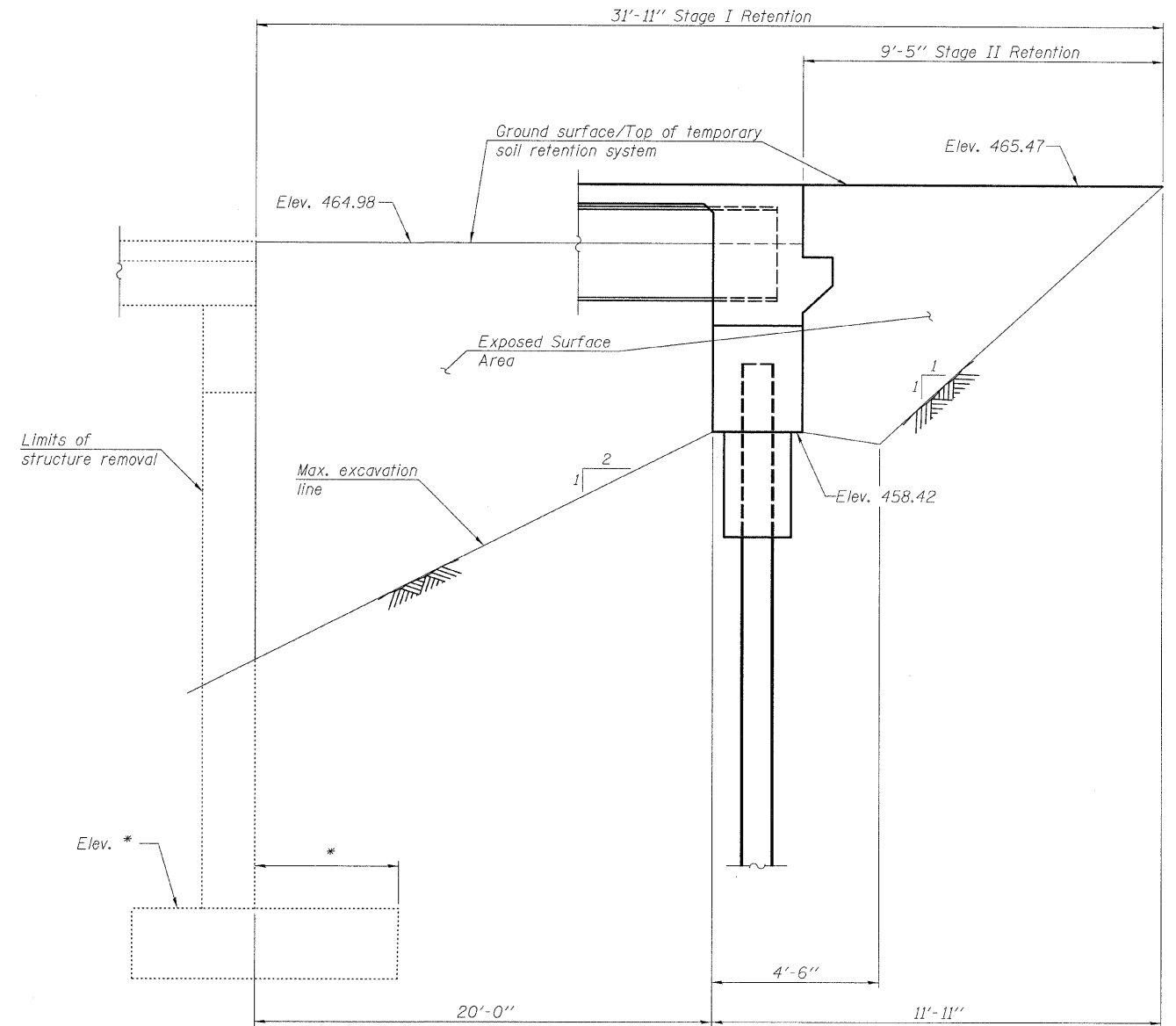


STATE OF ILLINOIS  
DEPARTMENT OF TRANSPORTATION



**TEMPORARY SOIL RETENTION SYSTEM  
AT NORTH ABUTMENT**



**TEMPORARY SOIL RETENTION SYSTEM  
AT SOUTH ABUTMENT**

Note:  
A cantilevered sheet piling design does not appear feasible and additional members or other retention system may be necessary. The Contractor shall submit a temporary soil retention system design including plan details and calculations for review and acceptance by the Engineer.

\* Existing plans for substructure dimensions are inconclusive. It is the Contractor's responsibility to determine existing footing dimensions and elevations.

DESIGNED	KAK
CHECKED	EML
DRAWN	KAK
CHECKED	EML

**HORNER &  
SHIFRIN, INC.  
ENGINEERS**

SHEET NO. 4 25 SHEETS	F.A.P. RTE.	SECTION	COUNTY	TOTAL SHEETS	SHEET NO.
	690	481B	CLINTON	46	21
CONTRACT NO. 76C21					
FED. ROAD DIST. NO.		ILLINOIS FED. AID PROJECT			

**TEMPORARY SOIL RETENTION SYSTEM  
STRUCTURE NO. 014-0079**