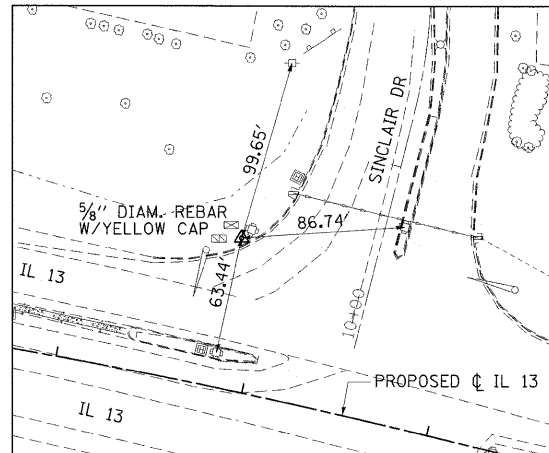
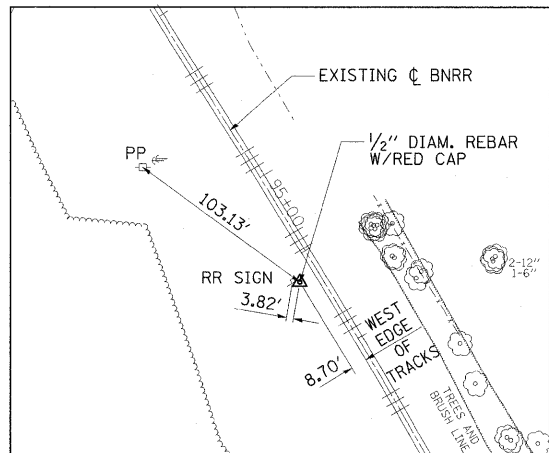


**CONTROL POINT #WP205**  
 STA. 1734+90.51, 63.86' RT. (IL 13)  
 N=393199.670 E=796020.652  
 ELEV=439.42



**CONTROL POINT #WP203**  
 STA. 1761+83.19, 81.05' LT. (IL 13)  
 N=393164.728 E=798722.176  
 ELEV=449.00



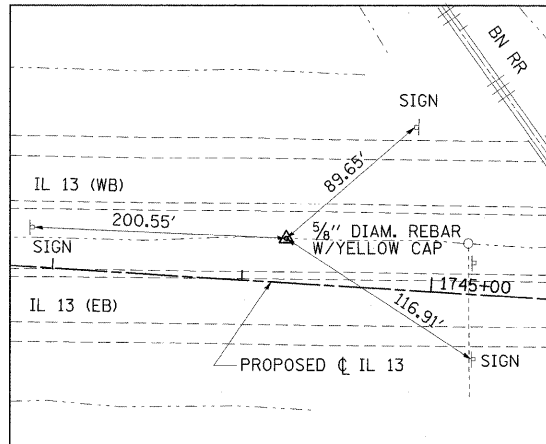
**CONTROL POINT #303**  
 STA. 473+93.61, 138.05' LT. (FRONTAGE RD)  
 N=392813.739 E=797404.061  
 ELEV=444.69

**BENCHMARK LOCATIONS**

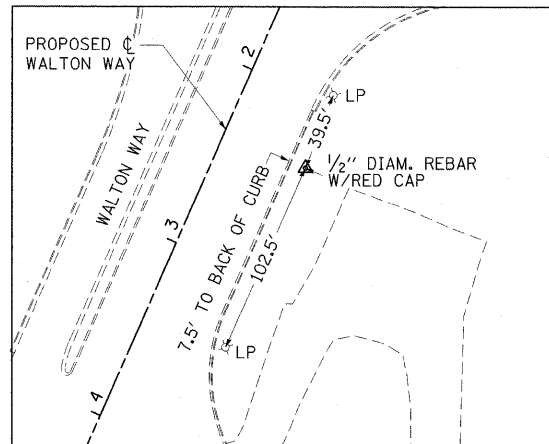
BM "18"  
 STA. 1735+13.73+/-, 69.26'+/- RT.  
 CUT SQUARE ON THE EAST CORNER OF A TRAFFIC SIGNAL HANDHOLE RIM IN THE S/W QUAD OF RTE 13 AND SKYLINE DRIVE, 37' RIGHT OF THE CENTERLINE OF RTE 13 EBL  
 ELEVATION = 439.10

BM "19"  
 STA. 1736+35.85+/-, 88.38'+/- RT.  
 CUT SQUARE IN THE CONCRETE FDN OF A COMBINATION MAST ARM ASSEMBLY S/E QUAD OF IL RTE 13 EBL AND SINCLAIR DR. 20' SOUTH OF THE CENTERLINE OF RTE 13 EBL  
 ELEVATION = 448.33

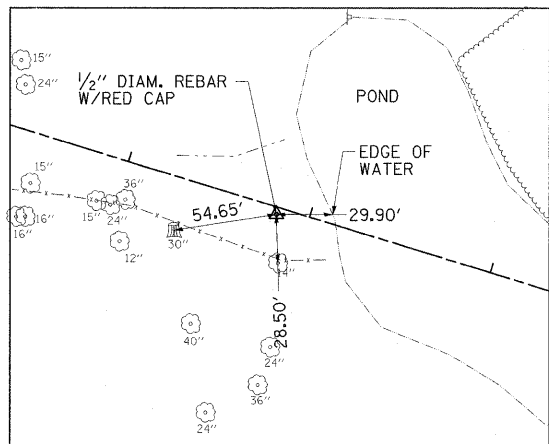
BM "9706"  
 STA. 1777+60.53+/-, 133.65'+/- RT.  
 IP&C S/E QUAD OF IL RTE 13 EBL AND WALTON WAY 58'+/- EAST OF THE CENTERLINE OF WALTON WAY  
 ELEVATION = 443.59



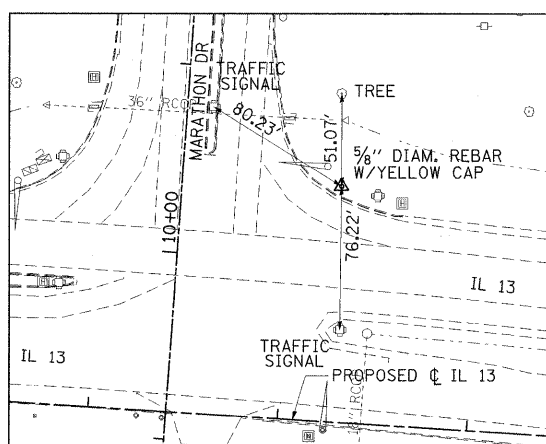
**CONTROL POINT #9704**  
 STA. 1744+22.13, 23.42' LT. (IL 13)  
 N=393254.999 E=796953.687  
 ELEV=446.21



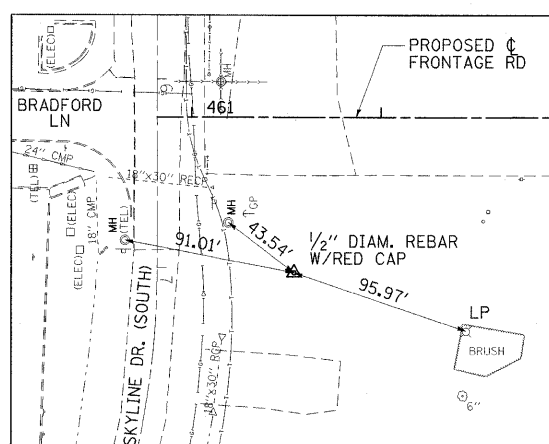
**CONTROL POINT #310**  
 STA. 2+36.04, 46.54' LT. (WALTON WAY)  
 N=392433.815 E=799264.092  
 ELEV=442.22



**CONTROL POINT #307**  
 STA. 492+82.63, 3.79' RT. (FRONTAGE RD)  
 N=392433.815 E=799264.092  
 ELEV=435.86



**CONTROL POINT #WP204**  
 STA. 1753+26.14, 125.65' LT. (IL 13)  
 N=393301.347 E=797862.271  
 ELEV=447.27



**CONTROL POINT #300**  
 STA. 461+54.04, 82.12' RT. (FRONTAGE RD)  
 N=392592.410 E=796164.697  
 ELEV=436.50

FILE NAME = L:\1001\0906603\Draw\CADD_Sheets\Frontage Road Contract\0998859-sht-ATB-002.dgn	USER NAME = Gary Davis	DESIGNED - BMB	REVISED -
PLOT SCALE = 50.0000' / IN.	DATE = 3/16/2011	DRAWN - RAH	REVISED -
		CHECKED - SPH	REVISED -
		DATE - 3/16/11	REVISED -

**STATE OF ILLINOIS  
 DEPARTMENT OF TRANSPORTATION**

<b>ALIGNMENT TIES AND BENCHMARKS ILLINOIS ROUTE 13</b>			
SCALE: 1" = 200'	SHEET NO. OF SHEETS	STA. 1720+00 TO STA. 1780+00.84	

F.A. RTE.	SECTION	COUNTY	TOTAL SHEETS	SHEET NO.
331	(IX-1) R-7	WILLIAMSON	79	13
				CONTRACT NO. 78251
ILLINOIS FED. AID PROJECT				