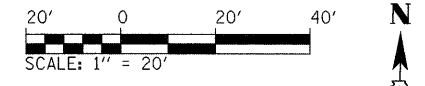
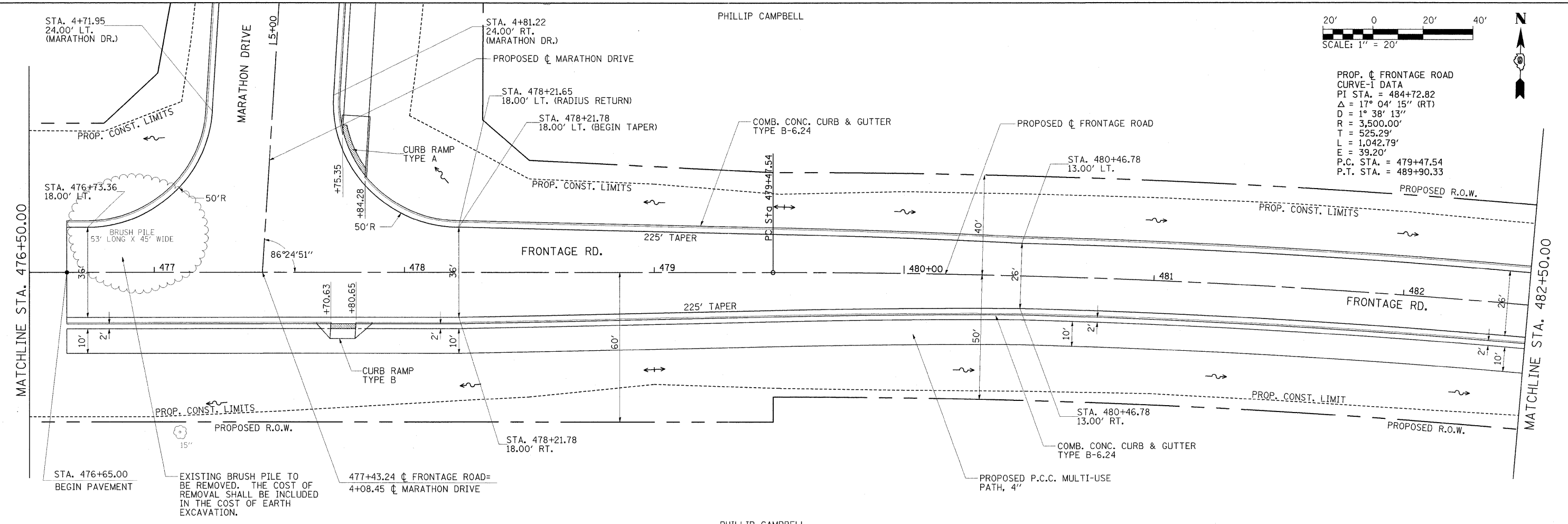


PLAN	SURVEYED	DATE
	FILED	
	NOTED	
	CHECKED	
	BY	
	NO.	
	FILE NAME	

PROFILE	SURVEYED	DATE
	FILED	
	NOTED	
	CHECKED	
	BY	
	NO.	
	FILE NAME	

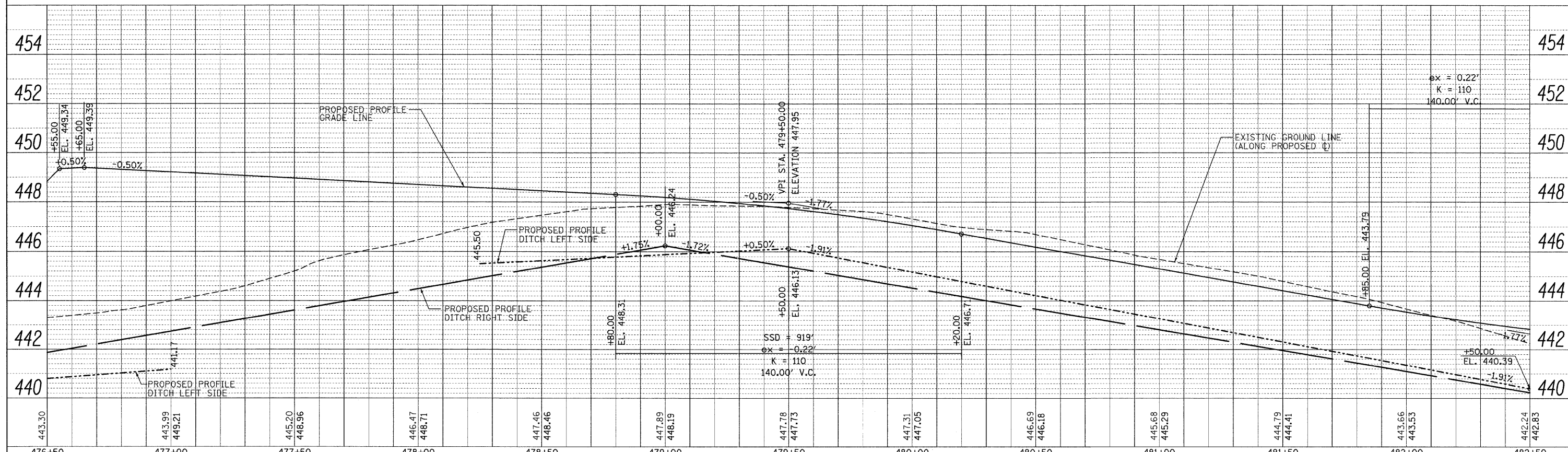


PROP. ϕ FRONTAGE ROAD
 CURVE-I DATA
 PI STA. = 484+72.82
 Δ = 17° 04' 15" (RT)
 D = 1° 38' 13"
 R = 3,500.00'
 T = 525.29'
 L = 1,042.79'
 E = 39.20'
 P.C. STA. = 479+47.54
 P.T. STA. = 489+90.33



EXISTING BRUSH PILE TO BE REMOVED. THE COST OF REMOVAL SHALL BE INCLUDED IN THE COST OF EARTH EXCAVATION.

PHILLIP CAMPBELL



FILE NAME =	USER NAME = Brian Bond	DESIGNED - BB	REVISED -	STATE OF ILLINOIS DEPARTMENT OF TRANSPORTATION	PLAN AND PROFILE FRONTAGE ROAD	F.A. RTE. = 331	SECTION = (1X-1) R-7	COUNTY = WILLIAMSON	TOTAL SHEETS = 79	SHEET NO. = 18		
1:\1001\9986603\Draw\CA00_Sheets\Frontage	Road Contract\0998859-shr\p1nprf-007-Frontage	DRAWN - RH & SH	REVISED -			SCALE: 1"=20'	SHEET NO. OF SHEETS	STA. 476+50 TO STA. 482+50	CONTRACT NO. 78251			
PLOT SCALE = 20.0000' / IN.	CHECKED - KPF & SPH	REVISOR -	REVISED -			ILLINOIS FED. AID PROJECT						
PLOT DATE = 3/17/2011	DATE = 3/16/11	REVISOR -	REVISED -									