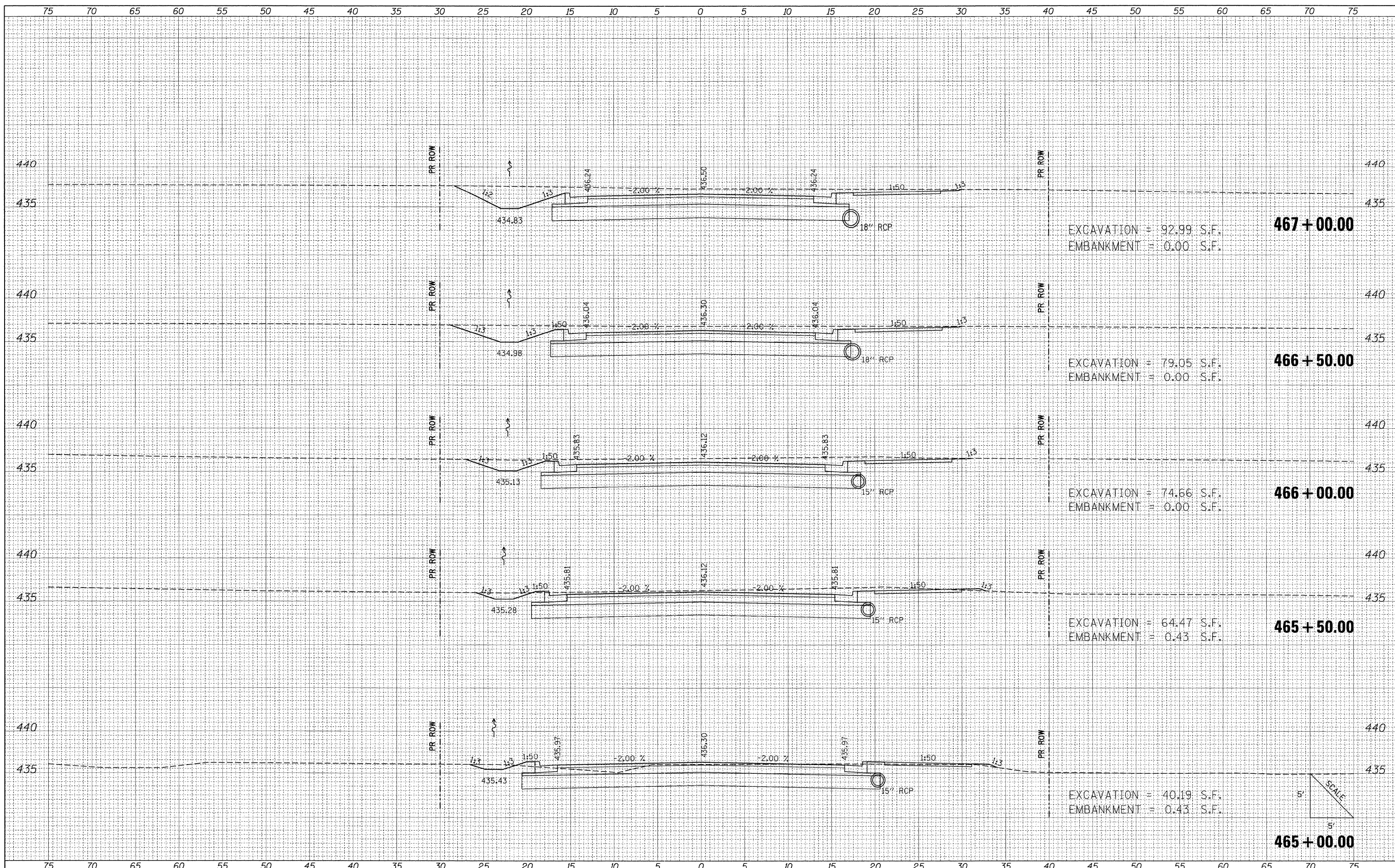


DATE	
BY	
ORIGINAL SURVEY	
SURVEYED	
PLOTTED	
NOTE BOOK	
REVISIONS	
AREAS CHECKED	
NO.	

DATE	
BY	
ORIGINAL SURVEY	
SURVEYED	
PLOTTED	
NOTE BOOK	
REVISIONS	
AREAS CHECKED	
NO.	



FILE NAME =	USER NAME = Brian Bond	DESIGNED - BMB	REVISED -	STATE OF ILLINOIS DEPARTMENT OF TRANSPORTATION	PROPOSED CROSS SECTIONS FRONTAGE ROAD			F.A. RTE. 331	SECTION (1X-1) R-7	COUNTY WILLIAMSON	TOTAL SHEETS 79	SHEET NO. 54
L:\DOT\0906603\Draw\CADD_Sheets\Frontage Road	Contract\0908859-shr-xs\Frontage.dgn	DRAWN - RAH	REVISED -		SCALE:	SHEET NO.	OF SHEETS	STA. 465+00.00 TO STA. 467+00.00	CONTRACT NO. 78251			
	PLOT SCALE = 5.0000 / IN.	CHECKED - SPH	REVISED -		ILLINOIS FED. AID PROJECT							
	PLOT DATE = 3/17/2011	DATE - 3/16/11	REVISED -									