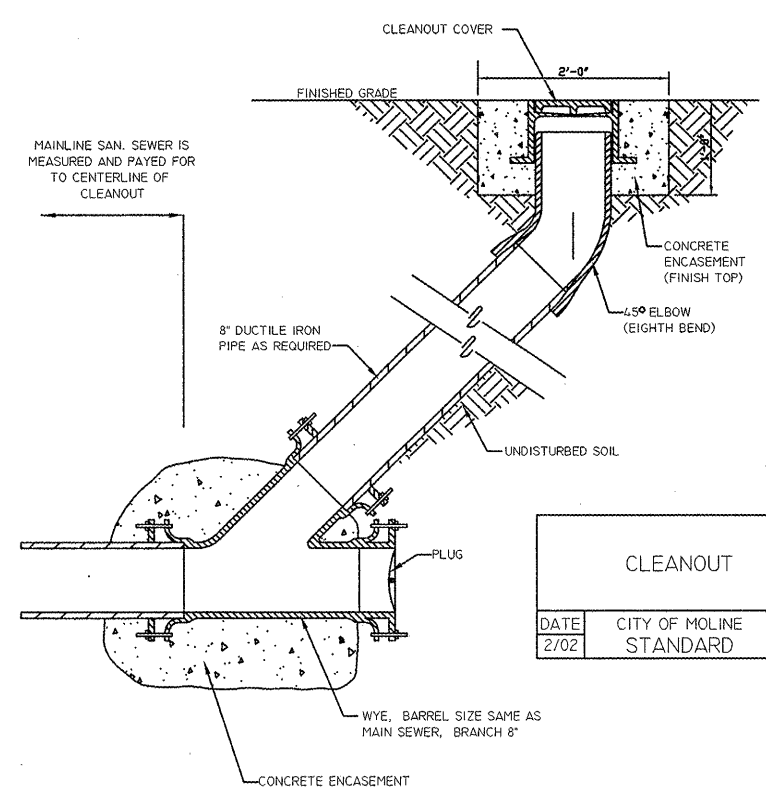
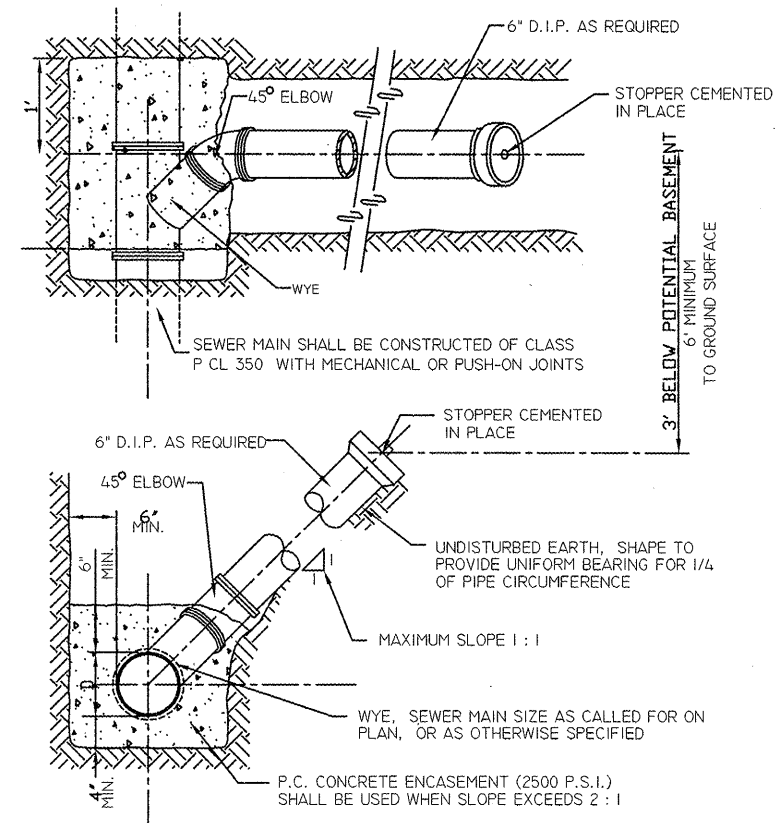


NOTE:  
BARS TO BE 1" DIA. x 18" LONG, DRILLED AND EPOXIED 9" INTO EXISTING PAVEMENT  
@ 30' O.C. LONGITUDINALLY, BOTH SIDES  
@ 18' O.C. TRANSVERSLY, BOTH ENDS

PAVEMENT PATCHING DETAIL		
DATE 1/03	CITY OF MOLINE STANDARD	8



CLEANOUT		
DATE 2/02	CITY OF MOLINE STANDARD	11



NOTE:  
RISERS TO BE CONSTRUCTED WHERE SEWER DEPTH EXCEEDS 6' BELOW POTENTIAL BASEMENT.  
ALL SERVICE SEWER IN R.O.W. SHALL BE 6" D.I.P.

TYPICAL SERVICE CONNECTION AND SEWER MAIN		
DATE 2/02	CITY OF MOLINE STANDARD	12

**SHIVEHATTERY**  
ARCHITECTURE+ENGINEERING  
1701 River Drive Suite 200 | Moline, Illinois 61265  
309.764.7650 | fax: 309.764.8616 | shive-hattery.com  
Iowa | Illinois | Missouri | Illinois Firm Number: 184-000214

FILE NAME =	USER NAME = \$USER\$	DESIGNED -- PMH	REVISED --
\$FILE\$		DRAWN -- MAC	REVISED --
	PLOT SCALE = \$SCALE\$	CHECKED -- 07-08-11	REVISED --
	PLOT DATE = \$DATE\$	DATE -- 07-08-11	REVISED --

STATE OF ILLINOIS  
DEPARTMENT OF TRANSPORTATION

DEMOLITION PLAN			
SCALE:	SHEET NO. 16 OF 17 SHEETS	STA.	TO STA.

F.A.U. RTE.	SECTION	COUNTY	TOTAL SHEETS	SHEET NO.
xxxx	06-00236-00-LS	ROCK ISLAND	17	16
CONTRACT NO. 85542				
FED. ROAD DIST. NO. 2 ILLINOIS FED. AID PROJECT				