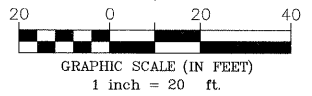


DETENTION AREA

EXIST. STM INLET
RM=658.21
12" HDPE N
6" PVC SE

STA. 13+85
40 L.F. 24" RCP CULVERT
PLUS 2 END SECTIONS
NW FL = 660.54
SE FL = 659.50

| CURVE TABLE | | | | | | |
|-------------|--------|--------|---------|--------|-----------|-----------|
| CURVE | RADIUS | LENGTH | TANGENT | CHORD | DELTA | P.I. STA. |
| C3 | 75 | 117.81 | 75.00 | 106.07 | 90°00'00" | 14+71.76 |
| C4 | 100 | 78.54 | 41.42 | 76.54 | 45°00'00" | 16+15.99 |
| C5 | 100 | 69.81 | 36.40 | 68.40 | 40°00'00" | 18+09.51 |



| | | | | |
|----------|---------|----------|--------------|-----------|
| FAU. NO. | SECTION | COUNTY | TOTAL SHEETS | SHEET NO. |
| N/A | ** | KANKAKEE | 21 | 9 |

CONTRACT NO. 87397

FED. ROAD DIST. NO. ILLINOIS FED. AID PROJECT

** 08-00058-00-BT

TYSON ENGINEERING, INC.
CONSULTING CIVIL ENGINEERS
LAND SURVEYORS
DESIGN FIRM LICENSE #184-001136
367 SOUTH SCHUYLER AVENUE
KANKAKEE, ILLINOIS 60901
PHONE (815) 932-7406

This document and the ideas and designs incorporated herein, as an instrument of professional service, is the property of Tyson Engineering Inc. and is not to be used in whole or in part, for any other project without written authorization of Tyson Engineering Inc.

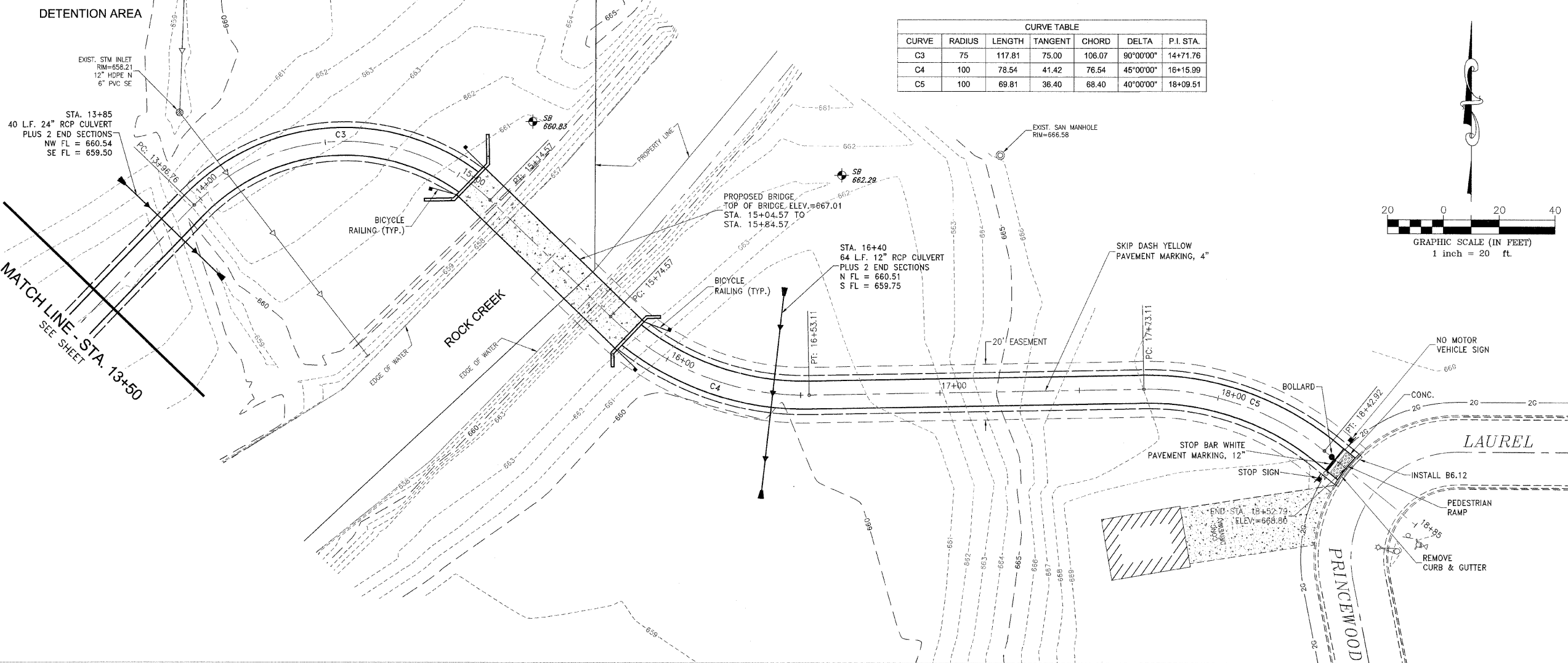
Do not scale drawings. Use dimensions only. Contractor shall be responsible for verifying all dimensions.

Information hereon and herein is confidential.

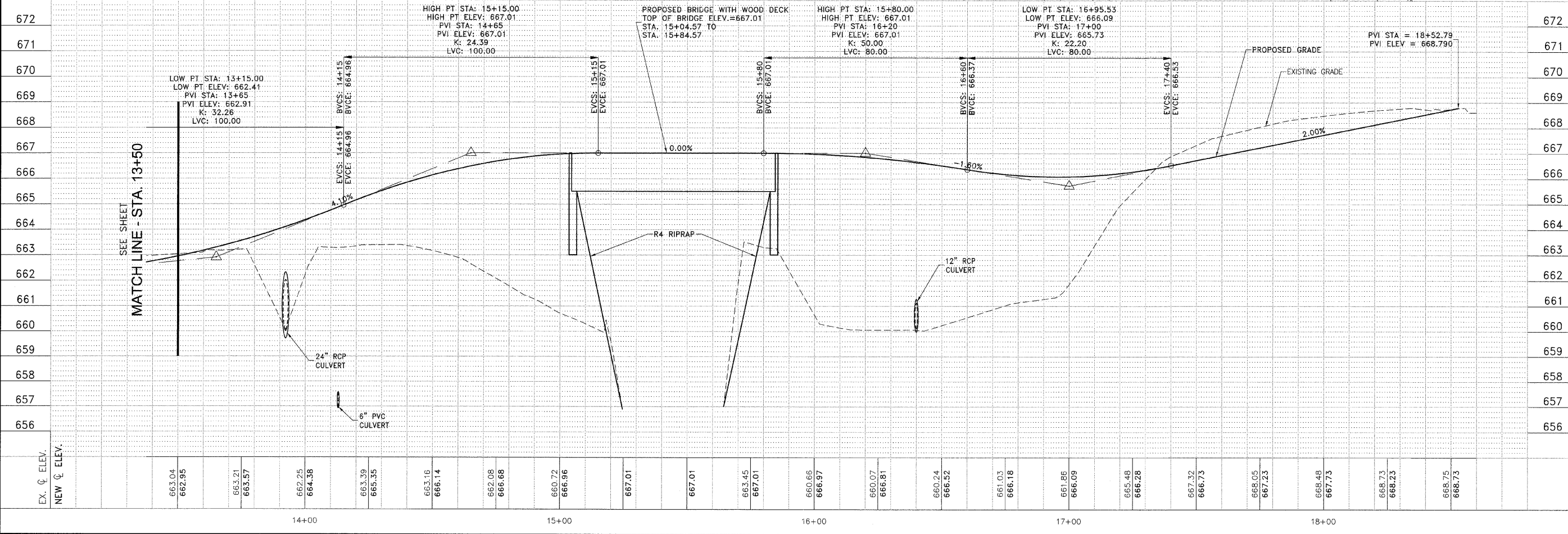
REVISIONS

| NO. | DATE | BY | DESCRIPTION |
|-----|---------|-----|---------------|
| 1 | 7/28/11 | NRD | REV. PER IDOT |

MATCH LINE - STA. 13+50
SEE SHEET



MATCH LINE - STA. 13+50
SEE SHEET



**PLAN & PROFILE
GREENWAYS TRAIL**

**GREENWAYS TRAIL
MANTENO, ILLINOIS**

**SECTION
08-00058-00-BT**

DATE: 7/15/11 JOB NO. E08110

SCALE: HORZ.: 1"=20'
VERT.: 1"=2'

DRAWN BY: MRG SHEET

CHECKED BY: SRM **9**