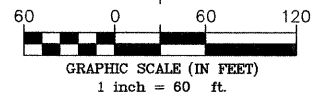
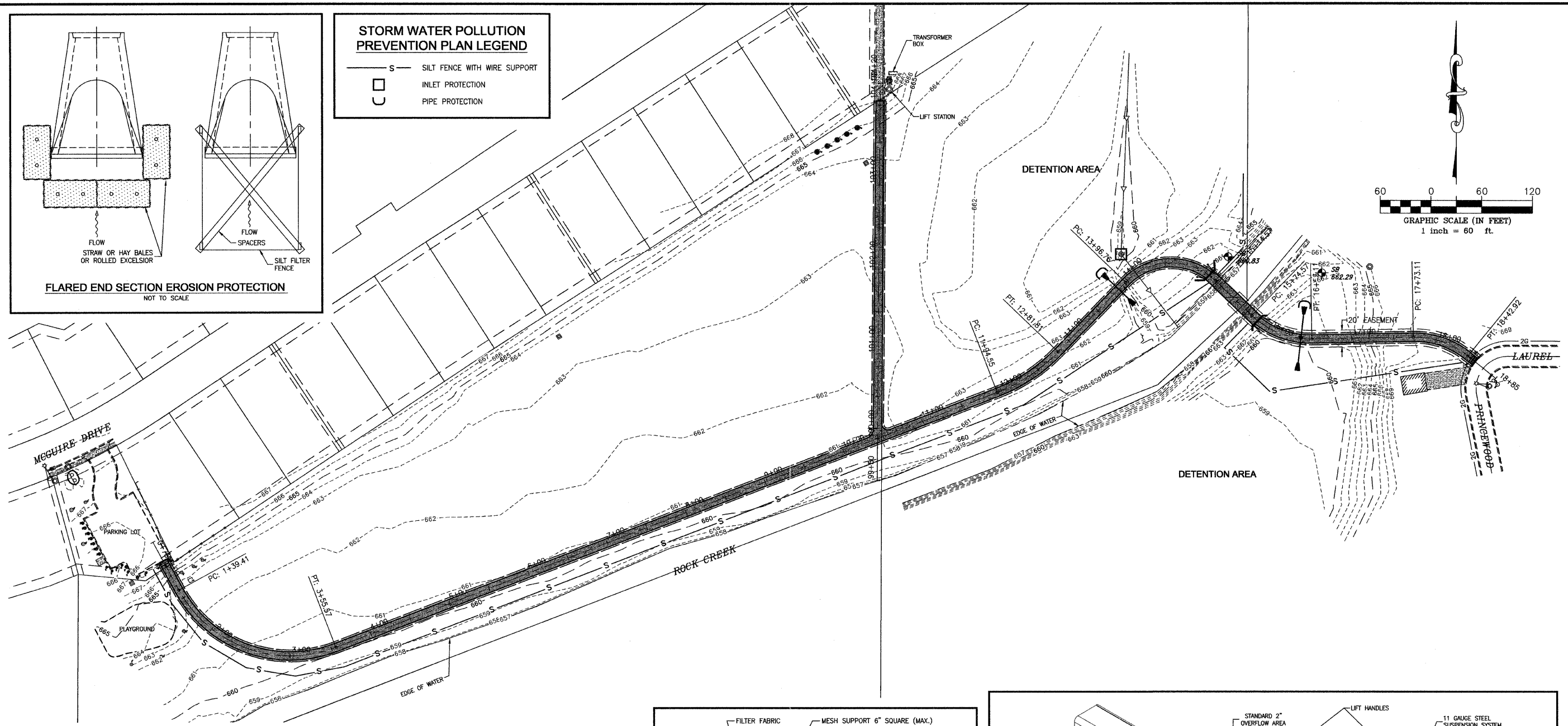


STORM WATER POLLUTION PREVENTION PLAN LEGEND

- S — SILT FENCE WITH WIRE SUPPORT
- — INLET PROTECTION
- C — PIPE PROTECTION



FAIL. RATE: N/A
SECTION: **
COUNTY: KANKAKEE
TOTAL SHEETS: 21
SHEET NO.: 11

CONTRACT NO. 87397
FED. ROAD DIST. NO. ILLINOIS
FED. AID PROJECT: ** 08-00058-00-BT

TYSON ENGINEERING, INC.
CONSULTING CIVIL ENGINEERS
LAND SURVEYORS
DESIGN FIRM LICENSE #184-001136
367 SOUTH SCHUYLER AVENUE
KANKAKEE, ILLINOIS 60901
PHONE (815) 932-7406

This document and the ideas and designs incorporated herein, as an instrument of professional service, is the property of Tyson Engineering Inc. and is not to be used in whole or in part, for any other project without written authorization of Tyson Engineering Inc.

Do not scale drawings. Use dimensions only. Contractor shall be responsible for verifying all dimensions. Information herein and herein is confidential.

REVISIONS

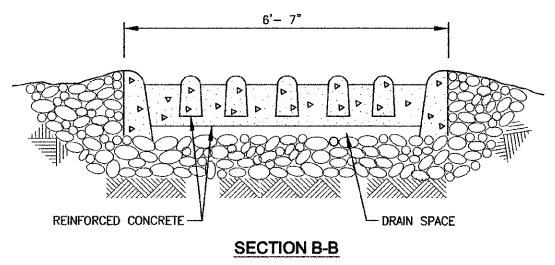
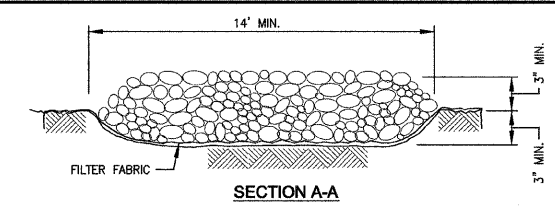
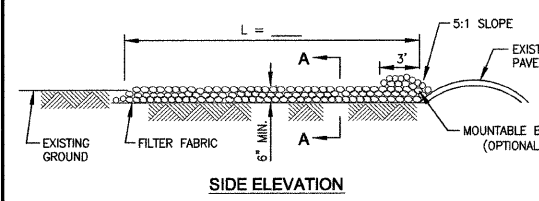
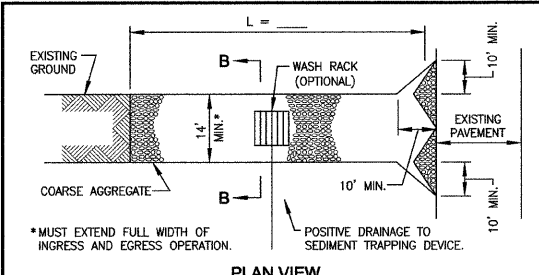
NO.	DATE	BY	DESCRIPTION
1	7/28/11	NRD	REV. PER IDOT

STORM WATER POLLUTION PREVENTION PLAN

GREENWAYS TRAIL
MANTENO, ILLINOIS

SECTION 08-00058-00-BT

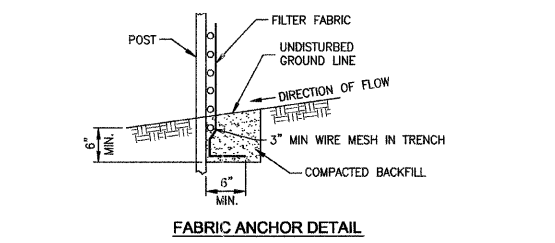
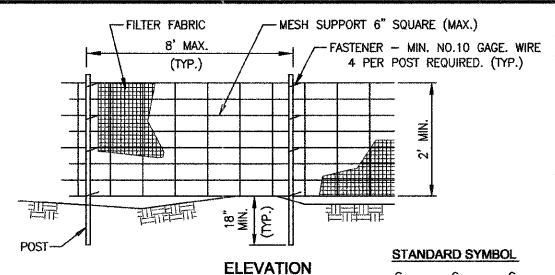
DATE: 7/15/11
JOB NO. E08110
SCALE: HORIZ.: 1"=60'
VERT.: N/A
DRAWN BY: MRG
SHEET 11
CHECKED BY: SRM



- NOTES:
1. FILTER FABRIC SHALL MEET THE REQUIREMENTS OF MATERIAL SPECIFICATION 592 GEOTEXTILE, TABLE 1 OR 2, CLASS I, II OR IV AND SHALL BE PLACED OVER THE CLEARED AREA PRIOR TO THE PLACING OF ROCK.
 2. ROCK OR RECLAIMED CONCRETE SHALL MEET ONE OF THE FOLLOWING IDOT COARSE AGGREGATE GRADATION, CA-1, CA-2, CA-3 OR CA-4 AND BE PLACED ACCORDING TO CONSTRUCTION SPECIFICATION 25 ROCKFILL USING PLACEMENT METHOD 1 AND CLASS III COMPACTION.
 3. ANY DRAINAGE FACILITIES REQUIRED BECAUSE OF WASHING SHALL BE CONSTRUCTED ACCORDING TO MANUFACTURERS SPECIFICATIONS.
 4. IF WASH RACKS ARE USED THEY SHALL BE INSTALLED ACCORDING TO THE MANUFACTURER'S SPECIFICATIONS.

STABILIZED CONSTRUCTION ENTRANCE PLAN
NOT TO SCALE

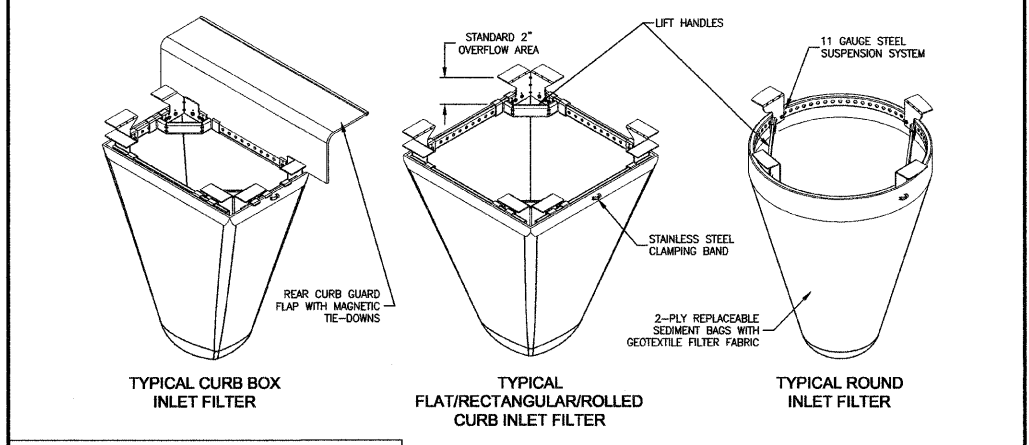
NRCS STANDARD DWG. NO. IL-630
DATE: 8-18-84



- NOTES:
1. WIRES OF MESH SUPPORT SHALL BE MIN. GAGE NO. 12.
 2. TEMPORARY SEDIMENT FENCE SHALL BE INSTALLED PRIOR TO ANY GRADING WORK IN THE AREA TO BE PROTECTED. THEY SHALL BE MAINTAINED THROUGHOUT THE CONSTRUCTION PERIOD AND REMOVED IN CONJUNCTION WITH THE FINAL GRADING AND SITE STABILIZATION.
 3. FILTER FABRIC SHALL MEET THE REQUIREMENTS OF MATERIAL SPECIFICATION 592 GEOTEXTILE TABLE 1 OR 2, CLASS I WITH EQUIVALENT OPENING SIZE OF AT LEAST 30 FOR NONWOVEN AND 50 FOR WOVEN.
 4. FENCE POSTS SHALL BE EITHER WOOD POST WITH A MINIMUM CROSS-SECTIONAL AREA OF 3.0 SQ. IN. OR A STANDARD STEEL POST.

SILT FENCE WITH WIRE SUPPORT
NOT TO SCALE

NRCS STANDARD DWG. NO. IL-ENG-50
DATE: 7/05



Inlet Filter Specifications

Material Property	Test Method	Value (min ave)
> Inner Filter Bag Spocs (2 ft ³ min vol)		
Grab Tensile	ASTM D 4632	100 lbs Non-Woven 200 lbs Woven Mono
Puncture Strength	ASTM D 4633	65 lbs Non-Woven 90 lbs Woven Mono
Trapezoidal Tear	ASTM D 4633	45 lbs Non-Woven 75 lbs Woven Mono
UV Resistance	ASTM D 4355	70% at 500 hrs 90%
App Open Size (AOS)	ASTM D 4751	70 sieve (0.212 mm) 40 sieve (0.425 mm)
Permittivity	ASTM D 4491	2.0 / sec 2.1 / sec
Water Flow Rate	ASTM D 4491	145 gpm / sqft 145 gpm / sqft
> Polyester Outer Reinforcement Bag Specifications		
Weight	ASTM D 3776	4.55 oz / sqyd +/- 15%
Thickness	ASTM D 1777	0.040 +/- 0.005
> Frame Construction		
A36 Structural Steel, 11 Gauge, Zinc Plated	ASTM A 576	Tensile Strength > 58,000 psi Yield Strength > 36,000 psi

