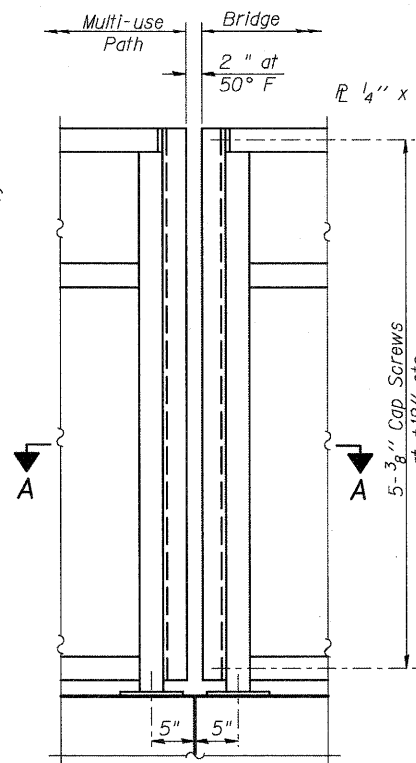
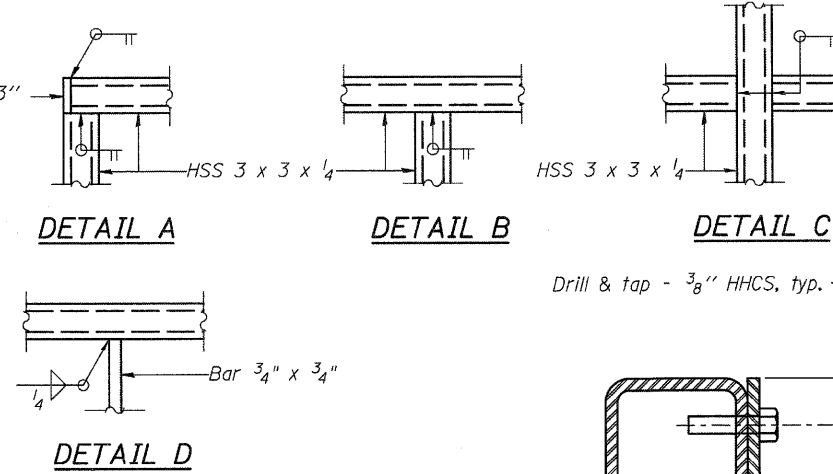


STEEL RAILING (SPECIAL)



STEEL RAILING (SPECIAL)



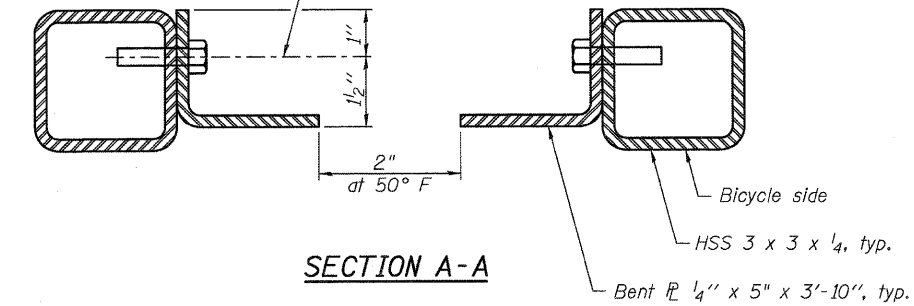
DETAIL A

DETAIL B

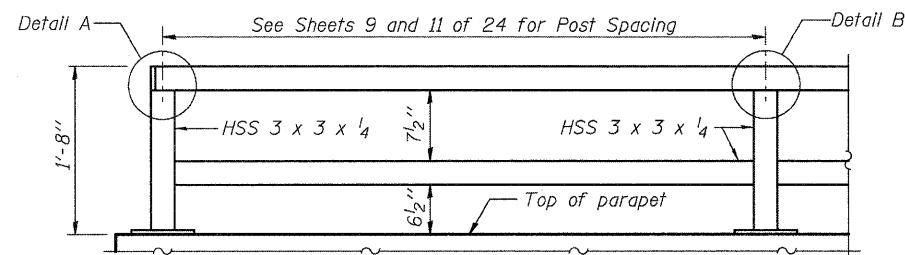
DETAIL C

DETAIL D

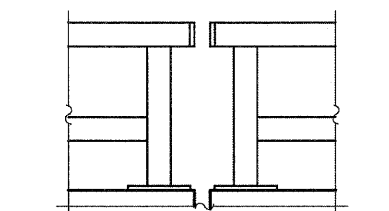
Drill & tap - 3/8" HHCS, typ.



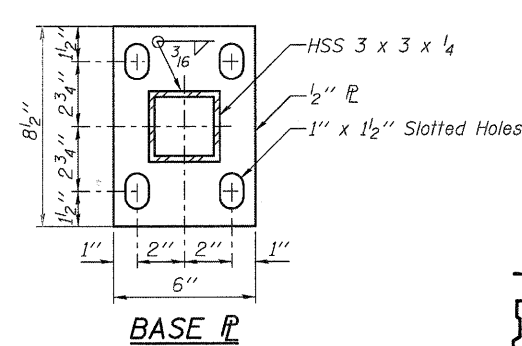
SECTION A-A



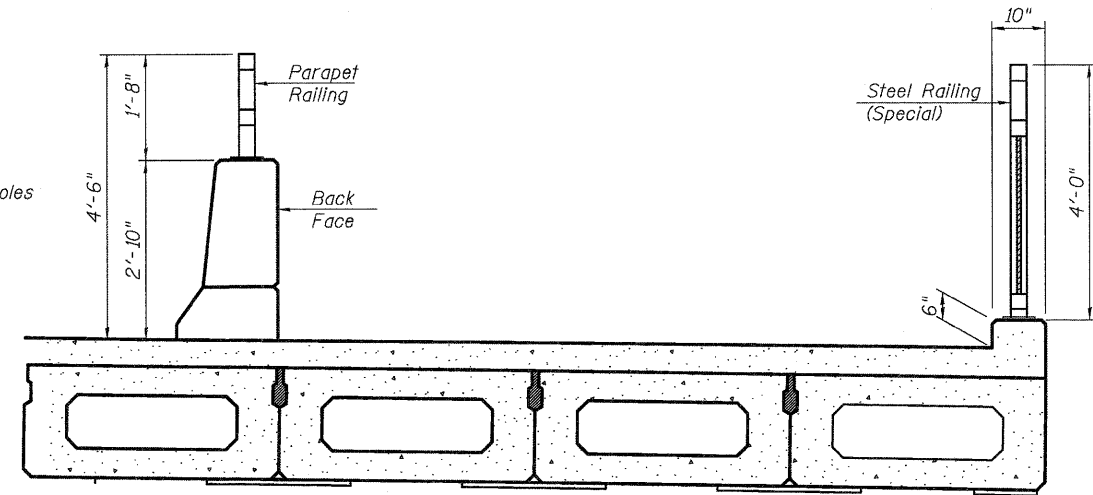
PARAPET RAILING ELEVATION



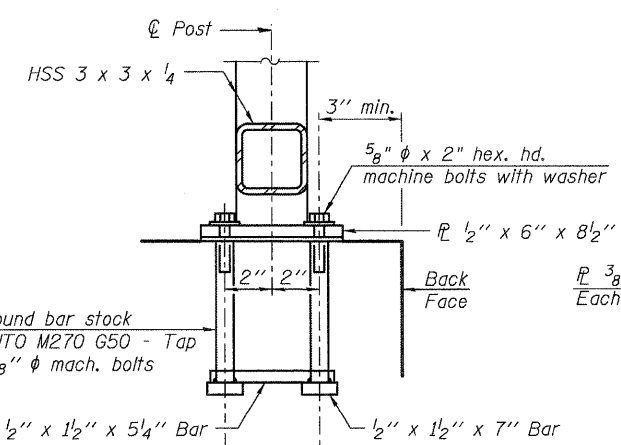
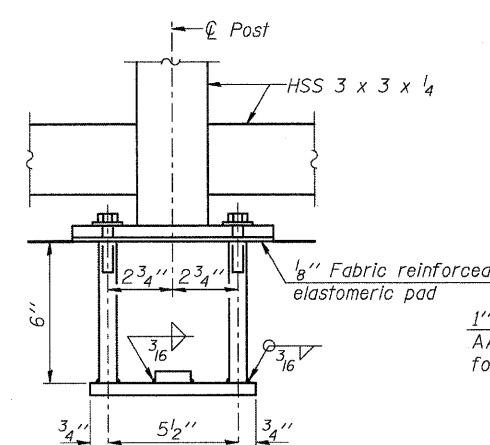
PARAPET RAILING ELEVATION AT ABUTMENTS



BASE PL

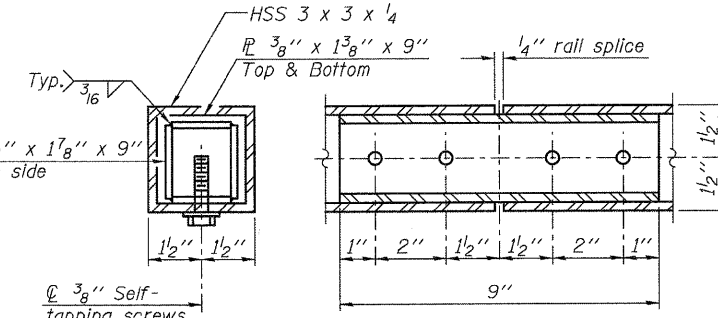


SECTION THRU SIDEWALK



ANCHOR BOLT DETAILS

In lieu of the cast-in-place anchor device shown, the Contractor has the option of drilling and setting 5/8" ϕ anchor rods according to Article 509.06 of the Standard Specifications. Embedment shall be according to the manufacturer's specifications.



RAIL SPLICE

NOTES:

- Space reinforcement to miss anchor rods.
- All post, railing, splices, anchor devices, and bent plates shall be powder coated black.
- The exact color shall be submitted to the Engineer for approval prior to painting any railing elements.

BILL OF MATERIAL

Item	Unit	Quantity
Steel Railing (Special)	Foot	133
Parapet Railing	Foot	326

FILE NAME = M:\Projects\2011\090854 - Beetham\Road\Structure\1\Drawn\012-BridgeRailings.dwg

WBS
WILLS BURKE KELSEY ASSOCIATES LTD.
 116 West Main Street, Suite 201
 St. Charles, Illinois 60174
 (630) 443-7755

USER NAME = #USER#	DESIGNED - MLH	REVISED -
PLOT SCALE =	CHECKED - AEU	REVISED -
PLOT DATE = 7/6/2011	DRAWN - MLH	REVISED -
	CHECKED - AEU	REVISED -

STATE OF ILLINOIS
DEPARTMENT OF TRANSPORTATION

BRIDGE RAILING DETAILS
STRUCTURE NO. 019-6107
 SHEET NO. 12 OF 24 SHEETS

F.A.U. RTE.	SECTION	COUNTY	TOTAL SHEETS	SHEET NO.
5355	04-00167-00-BR	DEKALB	88	58
FED. ROAD DIST. NO.			ILLINOIS FED. AID PROJECT	
			CONTRACT NO. 87491	