

**INDEX OF SHEETS**

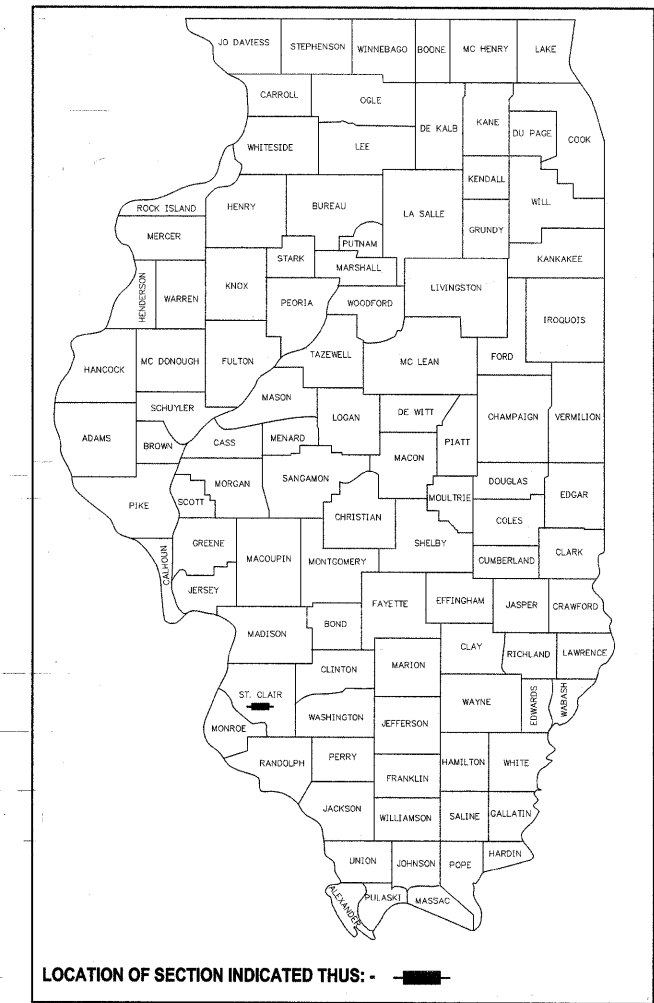
- |  |  |
|--|--|
| 1 COVER SHEET & SUMMARY OF QUANTITIES          | 9 17"x48" PPC DECK BEAM (INTERIOR SPAN)          |
| 2 GENERAL NOTES, TYPICAL SECTIONS & DETAILS    | 10 17"x48" PPC DECK BEAM DETAILS (INTERIOR SPAN) |
| 3 PLAN AND PROFILE                             | 11 ABUTMENTS 1 & 4                               |
| 4 GENERAL PLAN AND ELEVATION                   | 12 PIERS 2 & 3                                   |
| 5 PPC DECK BEAM SUPERSTRUCTURE (END SPANS)     | 13 STEEL RAILING, TYPE S-1                       |
| 6 PPC DECK BEAM SUPERSTRUCTURE (INTERIOR SPAN) | 14 HP PILE DETAILS                               |
| 7 17"x48" PPC DECK BEAM (END SPANS)            | 15-16 CROSS SECTIONS                             |
| 8 17"x48" PPC DECK BEAM DETAILS (END SPANS)    |  |

F.A. RTE.	SECTION	COUNTY	TOTAL SHEETS	SHEET NO.
	08-18101-04-BR	ST. CLAIR	16	1
PROJECT BROS 163(32)		ILLINOIS CONTRACT NO. 97466		
FEDERAL AID PROJECT				

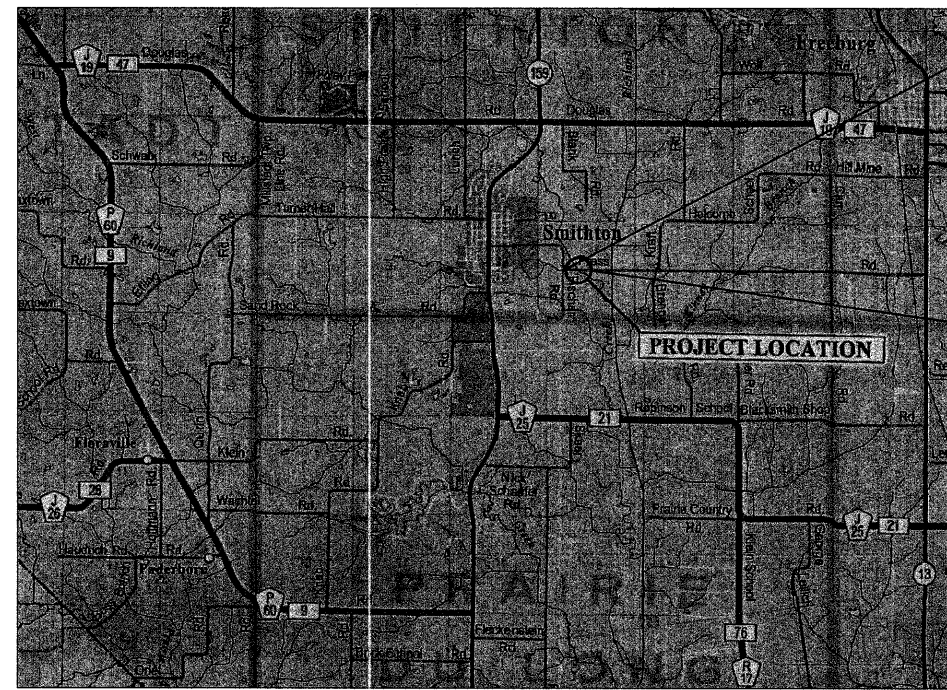
**STATE OF ILLINOIS**  
**DEPARTMENT OF TRANSPORTATION**  
**DIVISION OF HIGHWAYS**

# PLANS FOR PROPOSED LOCAL AGENCY IMPROVEMENT

**FEDERAL AID H.B.P. PROJECT**  
**T.R. 197 PRESS ROAD**  
**SECTION 08-18101-04-BR**  
**FED PROJECT NO. BROS-163(32)**  
**SMITHTON ROAD DISTRICT**  
**ST. CLAIR COUNTY**  
**CONSTRUCTION JOB NO. C-98-330-09**



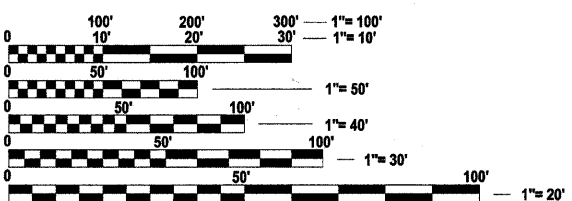
SUMMARY OF QUANTITIES			
CODE NO.	ITEM	UNIT	QUANTITY
20200100	EARTH EXCAVATION	CU YD	66.6
20300100	CHANNEL EXCAVATION	CU YD	550.0
20400800	FURNISHED EXCAVATION	CU YD	763
25000200	SEEDING, CLASS 2	ACRE	0.3
25000400	NITROGEN FERTILIZER NUTRIENT	POUND	30
25000500	PHOSPHORUS FERTILIZER NUTRIENT	POUND	30
25000600	POTASSIUM FERTILIZER NUTRIENT	POUND	30
25100115	MULCH, METHOD 2	ACRE	0.3
28000250	TEMPORARY EROSION CONTROL SEEDING	POUND	60
28000305	TEMPORARY DITCH CHECKS	FOOT	12
28000400	PERMETER EROSION BARRIER	FOOT	540
28100707	STONE DUMPED RIPRAP, CLASS A4	SQ YD	626
28200200	FILTER FABRIC	SQ YD	626
35100700	AGGREGATE BASE COURSE, TYPE A 8"	SQ YD	1477
40300100	BITUMINOUS MATERIALS (PRIME COAT)	GALLON	808
40300300	BITUMINOUS MATERIALS (COVER AND SEAL COATS)	GALLON	2216
40300500	COVER COAT AGGREGATE	TON	37
40300600	SEAL COAT AGGREGATE	TON	19
40603315	HOT-MIX ASPHALT SURFACE COURSE, MIX "C", N70	TON	30.7
50100100	REMOVAL OF EXISTING STRUCTURES	EACH	1
50300225	CONCRETE STRUCTURES	CU YD	48.2
50300280	CONCRETE ENCASEMENT	CU YD	24.1
50400305	PRECAST PRESTRESSED CONCRETE DECK BEAMS (17')	SQ FT	3122
50800205	REINFORCEMENT BARS, EPOXY COATED	POUND	5300
50900205	STEEL RAILING, TYPE S1	FOOT	224
51201600	FURNISHING PILES HP 12x53	FOOT	648
51202305	DRIVING PILES	FOOT	648
51203600	TEST PILES STEEL HP 12x53	EACH	2
51204680	PILES SHOES	EACH	20
51500100	NAME PLATES	EACH	1
58100200	WATERPROOFING MEMBRANE SYSTEM	SQ YD	346.6
58300100	PORTLAND CEMENT MORTAR FAIRING COURSE	FOOT	670
59300100	CONTROLLED LOW STRENGTH MATERIAL	CU YD	29
60600095	CLASS SI CONCRETE (OUTLET)	CU YD	4.8
60602800	CONCRETE GUTTER, TYPE B	FOOT	270
63200310	GUARDRAIL REMOVAL	FOOT	77
66700205	PERMANENT SURVEY MARKERS, TYPE 1	EACH	2
67100100	MOBILIZATION	L SUM	1
70101830	TRAFFIC CONTROL AND PROTECTION, STD BLR 21	L SUM	1
72400100	REMOVE SIGN PANEL ASSEMBLY, TYPE A	EACH	4
72400200	REMOVE SIGN PANEL ASSEMBLY, TYPE B	EACH	1
72400600	RELOCATE SIGN PANEL ASSEMBLY, TYPE B	EACH	1
72900200	METAL POST, TYPE B	FOOT	13
78200530	BARRIER WALL MARKERS, TYPE C	EACH	4
78201000	TERMINAL MARKER-DIRECT APPLIED	EACH	4
X5020501	UNDERWATER STRUCTURE EXCAVATION PROT, LOC 1	EACH	1
X5020502	UNDERWATER STRUCTURE EXCAVATION PROT, LOC 2	EACH	1



**SECTION 08-18101-04-BR BEGINS STA 31+00.00**

**SECTION 08-18101-04-BR INCLUDES A 3-SPAN (110'-6") PRECAST, PRESTRESSED CONCRETE DECK BRIDGE AT STA. 34+72.00**

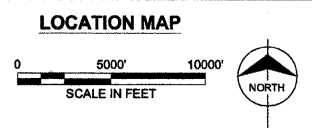
**SECTION 08-18101-04-BR ENDS STA 38+35.00**



FULL SIZE PLANS HAVE BEEN PREPARED USING STANDARD ENGINEERING SCALES. REDUCED SIZED PLANS WILL NOT CONFORM TO STANDARD SCALES. IN MAKING MEASUREMENTS ON REDUCED PLANS, THE ABOVE SCALES MAY BE USED.

J.U.L.I.E.  
 JOINT UTILITY LOCATION INFORMATION FOR EXCAVATION  
 1-800-892-0123  
 OR 811

**PRINTED BY THE AUTHORITY OF THE STATE OF ILLINOIS**



SMITHTON TOWNSHIP T. 1S., R. 8W.  
 S.E. 1/4 OF THE N.W. 1/4 SECTION 34 AND  
 N.E. 1/4 OF THE S.W. 1/4 SECTION 34

ROADWAY CLASSIFICATION: LOCAL ROAD  
 CURRENT ADT: 275  
 DESIGN SPEED: 40 MPH  
 DESIGN FREQUENCY: 20 YEAR STORM

LENGTH OF STRUCTURE = 110.5 FT. (0.021 MILE)  
 LENGTH OF ROADWAY = 624.5 FT. (0.118 MILE)  
 TOTAL PROJECT LENGTH = 735.0 FT. (0.139 MILE)

**STANDARDS**

000001-06	701901-01
280001-05	720001-01
515001-03	720006-02
606201-02	720011-01
635006-03	729001-01
635011-02	BLR 21-8
667101-01	

KIMBERLY A. RESTOFF, P.E.  
 License Expiration Date: November 30, 2011

**STATE OF ILLINOIS**  
**DEPARTMENT OF TRANSPORTATION**  
**DIVISION OF HIGHWAYS**

APPROVED 5-31-2011  
*Robert Davis*  
 HIGHWAY COMMISSIONER

APPROVED June 8-2011  
*James V. Hills*  
 ACTING COUNTY ENGINEER

PASSED June 20-2011  
*[Signature]*  
 DISTRICT ENGINEER OF LOCAL ROADS AND STREETS

RELEASING FOR BID BASED ON LIMITED REVIEW June 20-2011  
*W. Mary C. Francis*  
 DEPUTY DIRECTOR OF HIGHWAYS, REGION 5 ENGINEER