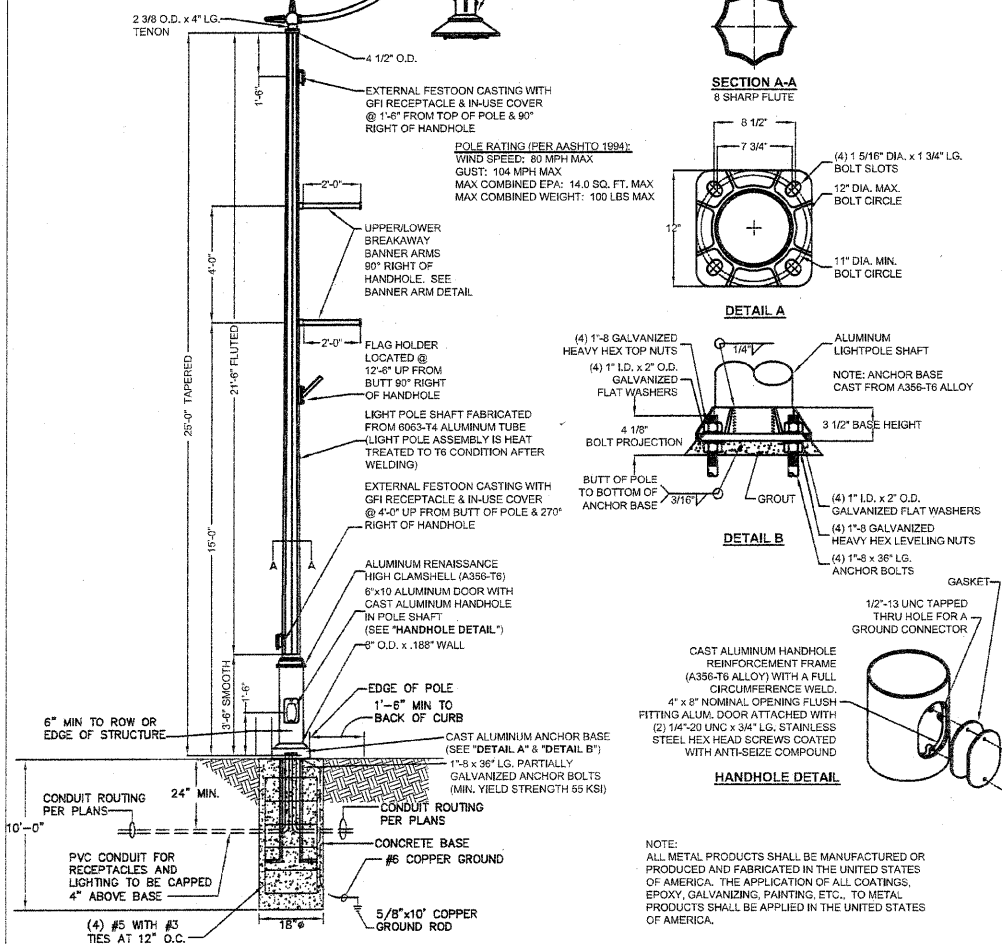


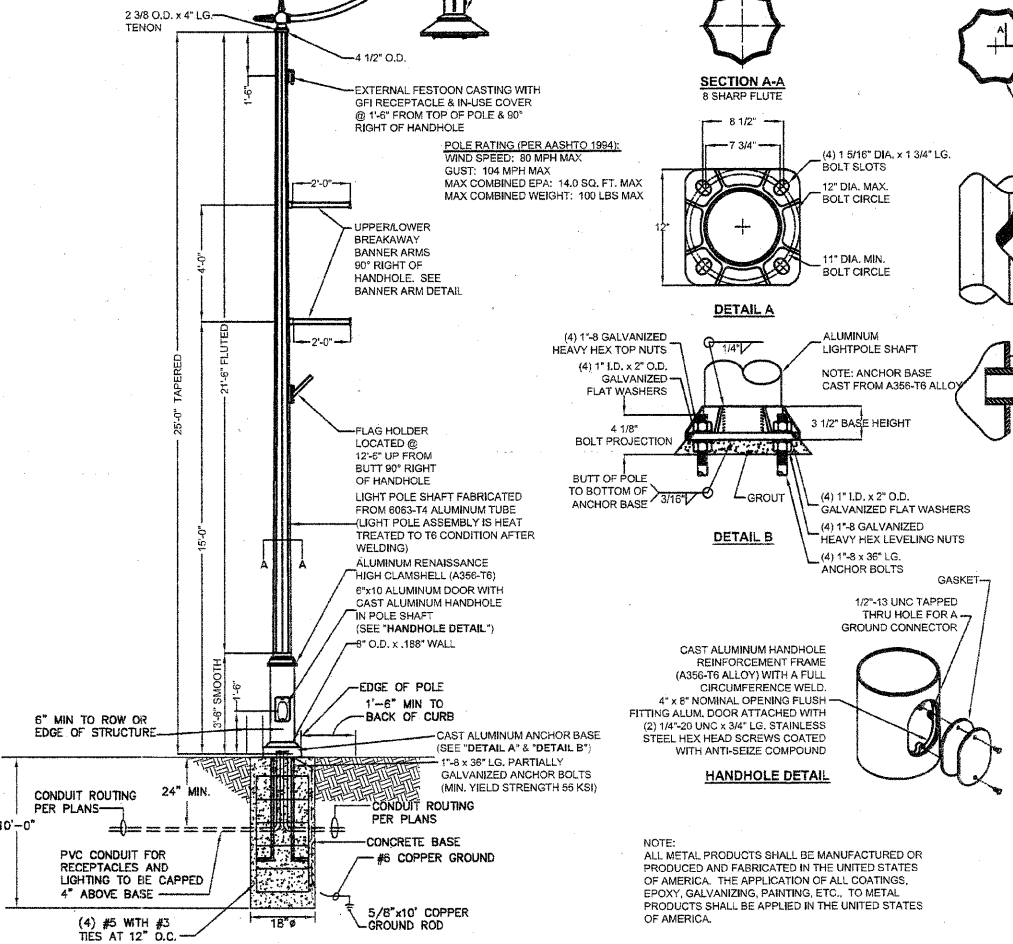
NOTE: PROVIDE #10 CONDUCTORS MIN. FOR LIGHTING AND RECEPTACLE CIRCUITS ROUTED WITHIN POLE/ARM. SPLICE IN HANDHOLE WITH LIGHTING AND POWER CONDUCTORS SIZED AS INDICATED ON PLAN.



FIXTURE TYPE SA POLE DETAIL
NOT TO SCALE PAY CODES: DECOR LT/POLE TYPE - SA AND LIGHT POLE FDN. SPL.(FT)

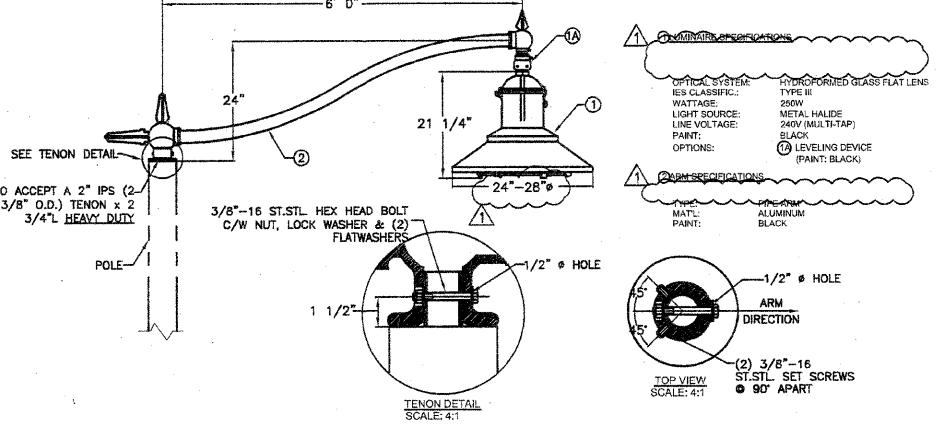
NOTE: ALL METAL PRODUCTS SHALL BE MANUFACTURED OR PRODUCED AND FABRICATED IN THE UNITED STATES OF AMERICA. THE APPLICATION OF ALL COATINGS, EPOXY, GALVANIZING, PAINTING, ETC., TO METAL PRODUCTS SHALL BE APPLIED IN THE UNITED STATES OF AMERICA.

NOTE: PROVIDE #10 CONDUCTORS MIN. FOR LIGHTING AND RECEPTACLE CIRCUITS ROUTED WITHIN POLE/ARM. SPLICE IN HANDHOLE WITH LIGHTING AND POWER CONDUCTORS SIZED AS INDICATED ON PLAN.



FIXTURE TYPE SB POLE DETAIL
NOT TO SCALE PAY CODES: DECOR LT/POLE TYPE - SB AND LIGHT POLE FDN. SPL.(FT)

NOTE: ALL METAL PRODUCTS SHALL BE MANUFACTURED OR PRODUCED AND FABRICATED IN THE UNITED STATES OF AMERICA. THE APPLICATION OF ALL COATINGS, EPOXY, GALVANIZING, PAINTING, ETC., TO METAL PRODUCTS SHALL BE APPLIED IN THE UNITED STATES OF AMERICA.



FIXTURE TYPE SA AND SB FIXTURE DETAIL
NOT TO SCALE

NOTE:
1. WELDING WIRE (ER4043).
2. BANNER ARM HEAT TREATED AFTER FABRICATION TO T6 CONDITION.
3. ALL HARDWARE IS 300 SERIES STAINLESS STEEL.

FILE NAME = M:\624-29\CAD\ELECTRICAL\IE SHEETS - REBID REVISED.DWG	USER NAME = JEFF NOLTE	DESIGNED - JEN	REVISION 2011-08-29
	PLOT SCALE = 4 1/8" = 1"	DRAWN - JEN	
	PLOT DATE = 2011-08-29	CHECKED - BEC	
		DATE - 2011-08-13	

STATE OF ILLINOIS
DEPARTMENT OF TRANSPORTATION

ELECTRICAL DETAILS	
SCALE: AS NOTED	SHEET NO. 3 OF 3 SHEETS
STA. _____	TO STA. _____

F.A.U. R.T.E. 9302	SECTION 06-00045-00-SW	COUNTY MONROE	TOTAL SHEETS 24	SHEET NO. 20
COLUMBIA		ILLINOIS FEDERAL AID PROJECT		

CONTRACT NO. 97468