

STATE OF ILLINOIS  
DEPARTMENT OF TRANSPORTATION

| F.A. RATE | SECTION            | COUNTY   | TOTAL SHEETS       | SHEET NO. |
|-----------|--------------------|----------|--------------------|-----------|
| VAR.      | D4 ITS SYSTEM 2023 | VARIOUS  | 11                 | 1         |
|           |                    | ILLINOIS | CONTRACT NO. 68H17 |           |

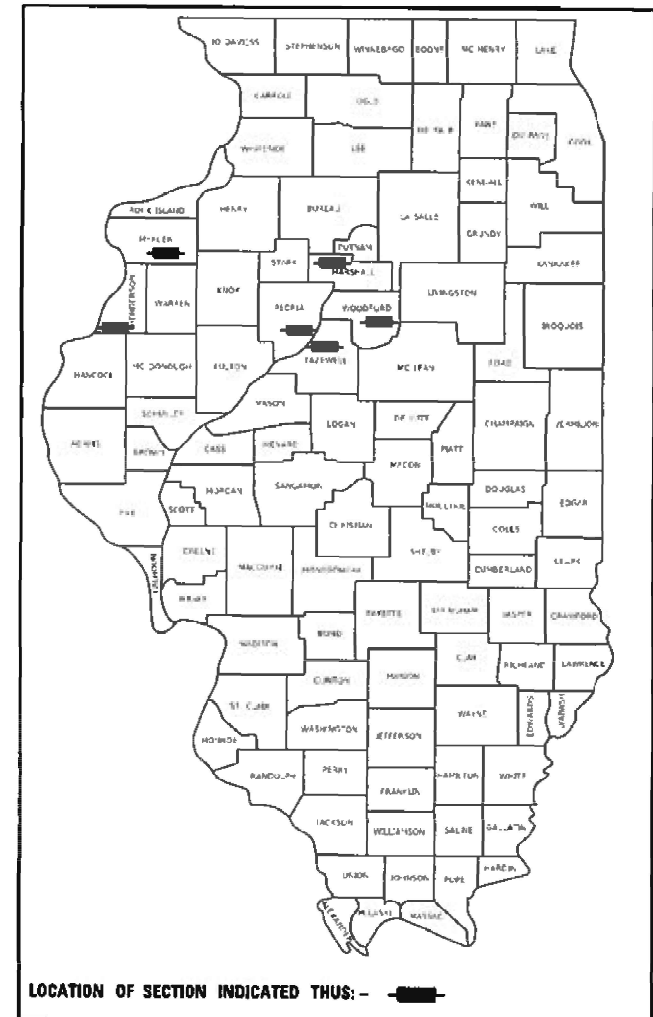
D-94-038-22

INDEX OF SHEETS:  
SEE SHEET 2 FOR INDEX OF SHEETS

PROPOSED  
HIGHWAY PLANS

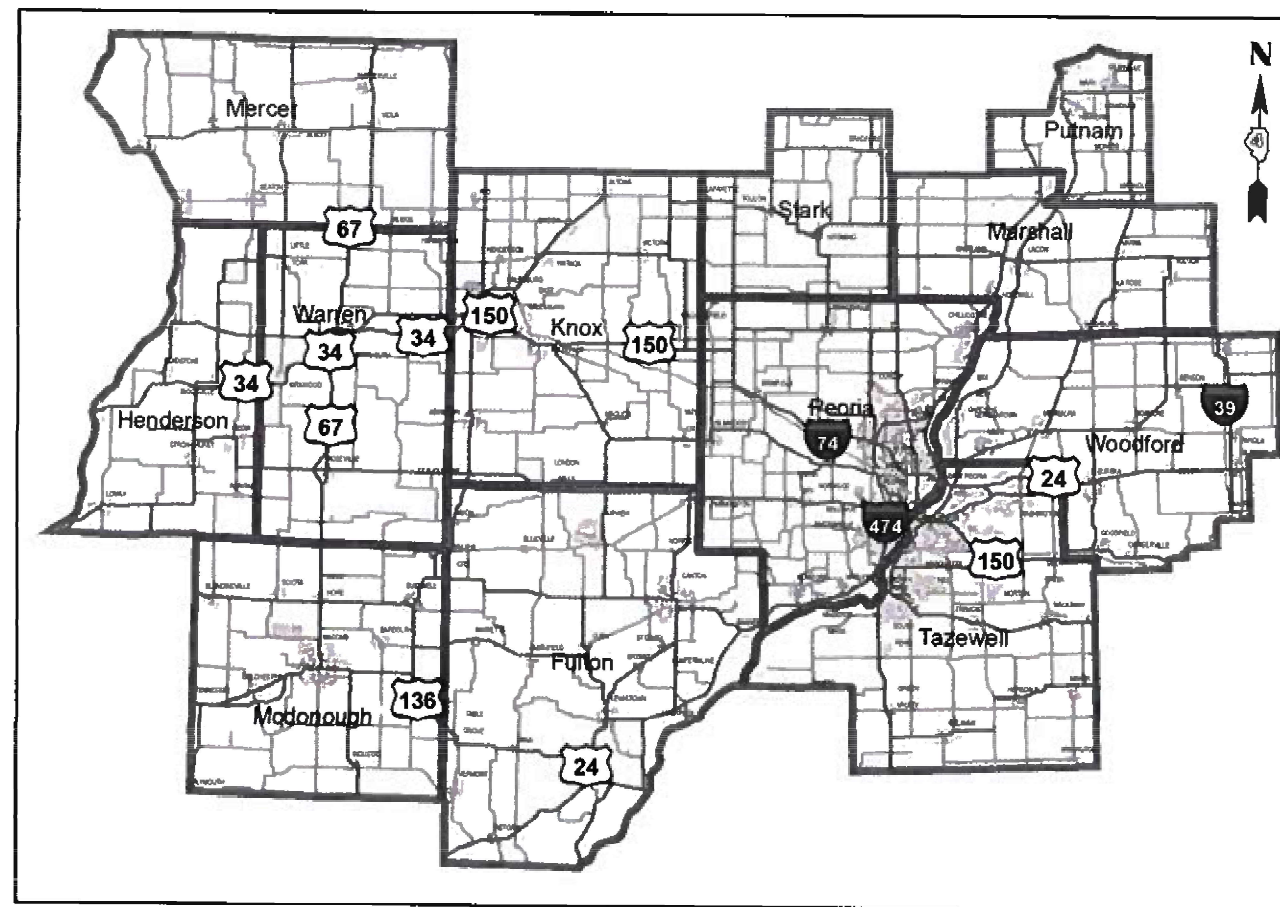
VARIOUS ROUTES  
D4 ITS SYSTEM 2023  
VARIOUS COUNTIES

C-94-056-22



HIGHWAY STANDARDS:  
SEE SHEET 2 FOR A LIST OF  
APPLICABLE HIGHWAY STANDARDS

PROJECT DESCRIPTION:  
INSTALLATION OF TRAFFIC SIGNAL  
CABINETS AND EQUIPMENT, CCTV  
CAMERAS, AND NETWORK  
COMMUNICATIONS EQUIPMENT AT  
VARIOUS LOCATIONS WITHIN  
DISTRICT 4.



J.U.L.I.E.  
JOINT UTILITY LOCATION INFORMATION FOR EXCAVATORS  
1-800-892-0123  
OR 811

PROJECT ENGINEER : TREVOR HANSON (309) 671-4474  
PROJECT MANAGER : ERIC HOWALD (309) 671-4481  
CATALOG NO. 036333-00D  
CONTRACT NO. 68H17

STATE OF ILLINOIS  
DEPARTMENT OF TRANSPORTATION

SUBMITTED July 08, 2022  
Kensel A. Barnett, RSP  
REGIONAL ENGINEER

August 19, 2022 [Signature]  
ENGINEER OF DESIGN AND ENVIRONMENT

August 19, 2022 [Signature]  
DIRECTOR OF HIGHWAYS PROJECT IMPLEMENTATION

PRINTED BY THE AUTHORITY  
OF THE STATE OF ILLINOIS

NO COMMITMENTS HAVE BEEN MADE IN CONJUNCTION WITH THIS PROJECT.

| INDEX OF SHEETS |   |
|-----------------|---|
| SHEET           | DESCRIPTION   |
| 1               | COVER SHEET   |
| 2               | COMMITMENTS, INDEX OF SHEETS, AND HIGHWAY STANDARDS                     |
| 3               | CONSTRUCTION NOTES  |
| 4               | SUMMARY OF QUANTITIES   |
| 5               | SCHEDULE OF QUANTITIES  |
| 6               | PROPOSED TRAFFIC SIGNAL PLANS - US 150 (WAR MEMORIAL) & MONROE/ CENTRAL |
| 7 -11           | TRAFFIC SIGNAL PHASE DIAGRAMS   |

| HIGHWAY STANDARDS |   |
|-------------------|---|
| STANDARD          | DESCRIPTION   |
| 000001-08         | STANDARD SYMBOLS, ABBREVIATIONS AND PATTERNS                  |
| 001006            | DECIMAL OF AN INCH AND OF A FOOT                              |
| 701001-02         | OFF-ROAD OPERATIONS, 2L, 2W, MORE THAN 15' AWAY               |
| 701006-05         | OFF-ROAD OPERATIONS, 2L, 2W, 15' TO 24" FROM PAVEMENT EDGE    |
| 701101-05         | OFF-ROAD OPERATIONS, MULTILANE, 15' TO 24" FROM PAVEMENT EDGE |
| 701106-02         | OFF-ROAD OPERATIONS, MULTILANE, MORE THAN 15' AWAY            |
| 701701-10         | URBAN LANE CLOSURE, MULTILANE INTERSECTION                    |
| 701801-06         | SIDEWALK, CORNER OR CROSSWALK CLOSURE                         |
| 701901-08         | TRAFFIC CONTROL DEVICES                                       |
| 857001-01         | STANDARD PHASE DESIGNATION DIAGRAMS AND PHASE SEQUENCES       |
| 878001-11         | CONCRETE FOUNDATION DETAILS                                   |

MODEL: D:\p4\h...  
FILE NAME: S:\CEN\WV\ORD\DESIGN\AN\hanson.dwg 68H17 D4 ITS System 2023\68H17 D4 ITS System 2023.dgn

|  |                              |            |           |   |  |                           |                    |         |              |           |  |
|--|------------------------------|------------|-----------|---|--|---------------------------|--------------------|---------|--------------|-----------|--|
|  | USER NAME = hansonj          | DESIGNED - | REVISED - | <b>STATE OF ILLINOIS<br/>DEPARTMENT OF TRANSPORTATION</b> | <b>COMMITMENTS, INDEX OF SHEETS, &amp; HIGHWAY STANDARDS</b> | F.A. RTE.                 | SECTION            | COUNTY  | TOTAL SHEETS | SHEET NO. |  |
|  | PLOT SCALE = 23,8272 * / in. | CHECKED -  | REVISED - |   |  | VAR.                      | D4 ITS SYSTEM 2023 | VARIOUS | 11           | 2         |  |
|  | PLOT DATE = 7/8/2022         | DATE -     | REVISED - |   |  | CONTRACT NO. 68H17        |                    |         |              |           |  |
|  |                              |            |           |   |  | ILLINOIS FED. AID PROJECT |                    |         |              |           |  |
|  |                              |            |           |   | SCALE:   | SHEET                     | OF                 | SHEETS  | STA.         | TO STA.   |  |

**TRAFFIC SIGNAL CONSTRUCTION STAGING NOTES**

|    |  |
|----|--|
| 1. | THE CONTRACTOR WILL BE ALLOWED TO PLACE THE INTERSECTION INTO ALL-RED FLASH MODE TO FACILITATE THE INSTALLATION OF THE PROPOSED TRAFFIC SIGNAL CONTROLLER CABINET, CONDUIT, ELECTRICAL CABLE AND OTHER COMPONENTS.   |
| 2. | THE CONTRACTOR SHALL FURNISH AND INSTALL A MINIMUM OF TWO STOP SIGNS PER APPROACH WHEN THE INTERSECTION IS OPERATING IN AL-RED FLASH MODE. THE TRAFFIC SIGNALS MAY BE PLACED INTO ALL-RED FLASH MODE BETWEEN THE HOURS OF 8:30AM AND 3:00PM ONLY.  |
| 3. | THE CONTRACTOR SHALL RESTORE THE TRAFFIC SIGNALS TO NORMAL OPERATION AT ALL OTHER TIMES, UNLESS SPECIFICALLY DIRECTED OTHERWISE BY THE ENGINEER.   |
| 4. | THE CONTRACTOR WILL BE ALLOWED TO PLACE THE INTERSECTION INTO FLASH FOR A MAXIMUM OF FIVE DAYS PER EACH LOCATION.  |
| 5. | THE CONTRACTOR WILL BE ALLOWED TO MAKE TEMPORARY SPLICES AS NEEDED TO FACILITATE THE INSTALLATION OF THE PROPOSED TRAFFIC SIGNAL EQUIPMENT.  |
| 6. | ALL COSTS (LABOR, MATERIALS, AND EQUIPMENT) ASSOCIATED WITH THESE REQUIREMENTS SHALL BE INCLUDED IN THE CONTRACT BID PRICE. THERE WILL BE NO ADDITIONAL COMPENSATION FOR ITEMS REQUIRED TO IMPLEMENT STAGING, INCLUDING, BUT NOT LIMITED TO, TEMPORARY CABLE SPLICES, TEMPORARY TRAFFIC POSTS, AND PREMIUM TIME HOURS. |

**CONSTRUCTION NOTES**

|     |   |
|-----|---|
| 1.  | THE LOCATION OF ALL UTILITIES AND PRIVATELY OWNED FACILITIES SHALL BE FIELD VERIFIED BY THE CONTRACTOR PRIOR TO THE INSTALLATION OF ANY COMPONENTS.   |
| 2.  | THE CONTRACTOR SHALL BE RESPONSIBLE FOR LOCATING EXISTING IDOT ELECTRICAL FACILITIES AT HIS/HER OWN EXPENSE IF REQUIRED. THE CONTRACTOR SHALL ALSO BE LIABLE FOR ANY DAMAGE TO IDOT FACILITIES RESULTING FROM INACCURATE LOCATING.  |
| 3.  | ELECTRICAL WORK SHALL CONFORM WITH NATIONAL, STATE, AND LOCAL CODES.  |
| 4.  | ALL TRAFFIC SIGNAL STRUCTURES SHALL BE BONDED IN ACCORDANCE WITH NEC REQUIREMENTS. THIS WORK SHALL BE PAID FOR AT THE CONTRACT UNIT PRICE FOR "ELECTRIC CABLE IN CONDUIT, EQUIPMENT GROUNDING CONDUCTOR, NO. 6 1C" AND SHALL INCLUDE ALL LABOR, EQUIPMENT, AND MATERIALS (INCLUDING CLAMPS, HARDWARE, ELECTRICAL CABLE, AND ALL OTHER ITEMS REQUIRED TO BOND THE STRUCTURES).   |
| 5.  | THE CONTRACTOR SHALL PROVIDE ELECTRICAL CABLE SLACK IN ACCORDANCE WITH ARTICLE 873.03.  |
| 6.  | ELECTRICAL CABLE WILL BE MEASURED FOR PAYMENT IN ACCORDANCE WITH ARTICLE 873.04.  |
| 7.  | THE CONTRACTOR SHALL VERIFY FIELD CONDITIONS PRIOR TO BIDDING. THERE WILL BE NO ADDITIONAL COMPENSATION PAID FOR CLAIMS THAT ARISE FROM A FAILURE TO FULLY INVESTIGATE EXISTING FIELD CONDITIONS.   |
| 8.  | ANY MAINTENANCE OF EXISTING TRAFFIC SIGNALS WILL BE CONSIDERED EXTRA WORK IN ACCORDANCE WITH ARTICLE 109.04 OF THE STANDARD SPECIFICATIONS.   |
| 9.  | ALL SURPLUS MATERIALS SHALL BE DISPOSED OF IN ACCORDANCE WITH ARTICLE 202.03 OF THE STANDARD SPECIFICATIONS.  |
| 10. | NO ADDITIONAL COMPENSATION WILL BE ALLOWED FOR PLACING CONDUIT AT GREATER THAN 2 FT. MINIMUM DEPTH TO AVOID OBSTACLES SUCH AS UNDERGROUND UTILITIES.  |
| 11. | THE CONTRACTOR IS RESPONSIBLE FOR THE COST OF UNCOVERING OR HAND DIGGING AROUND UTILITIES AS NECESSARY. THIS COST OF THIS WORK SHALL BE INCLUDED IN THE UNIT PRICES FOR THE CONDUITS.   |
| 12. | THE EXISTING TRAFFIC SIGNALS SHALL REMAIN IN OPERATION DURING THE CONSTRUCTION OF THE PROPOSED TRAFFIC SIGNALS.   |
| 13. | THE CONTRACTOR SHALL REMOVE THE EXISTING BBS, PHOTOCCELL RELAY, DETECTION EQUIPMENT, CCTV EQUIPMENT, COMMUNICATIONS EQUIPMENT, EMERGENCY VEHICLE PREEMPTION EQUIPMENT, ETC. AND RE-INSTALL WITH PROPOSED CABINET. THE CONTRACTOR SHALL VERIFY THAT ALL EXISTING EQUIPMENT FUNCTIONS PROPERLY AFTER RE-INSTALLATION. THE COST OF THIS WORK SHALL BE INCLUDED IN THE COST OF THE PROPOSED TRAFFIC SIGNAL CABINET.   |
| 14. | THE CONTRACTOR SHALL REMOVE THE EXISTING TRAFFIC SIGNAL CABINET AND PERIPHERAL EQUIPMENT FROM THE LOCATIONS AS LISTED IN THE PLANS AND DELIVER THEM OT THE IDOT TRAFFIC BUILDING AT 1025 W. DETWEILLER DR. PEORIA, IL 61615. THE COST OF THIS WORK SHALL BE INCLUDED IN THE COST OF THE PROPOSED TRAFFIC SIGNAL CABINET.  |
| 15. | REMOVAL OF EXISTING TRAFFIC SIGNAL ITEMS WILL NOT BE PAID FOR SEPARATELY, BUT SHALL BE INCLUDED IN THE BID PRICES FOR THE PROPOSED ITEMS.   |
| 16. | THE CONTRACTOR SHALL VERIFY EXISTING CABINET PHASING, PREEMPTION, AND DETECTION PRIOR TO RELEASING THE PROPOSED CABINETS FOR PRODUCTION. THE COST OF THIS WORK SHALL BE INCLUDED IN THE BID PRICE FOR THE PROPOSED TRAFFIC SIGNAL CABINET.  |
| 17. | THE EXISTING CONTROLLERS WILL BE USED IN THE PROPOSED TRAFFIC SIGNAL CABINETS. UPON REQUEST, THE DEPARTMENT WILL FURNISH CONTROLLERS FOR USE DURING CABINET SET UP AND TESTING PRIOR TO INSTALLATION IN THE FIELD.  |
| 18. | THE DEPARTMENT WILL FURNISH THE PROPOSED TRAFFIC SIGNAL CABINET COMPLETE WITH ALL REQUIRED CABINET COMPONENTS FOR THE INTERSECTION OF IL 17 (FIFTH ST.) & HIGH ST. THE DEPARTMENT WILL CONFIGURE AND TEST THE CABINET PRIOR TO INSTALLATION. THE CONTRACTOR SHALL TRANSPORT THE CABINET FROM THE IDOT TRAFFIC BUILDING TO THE JOB SITE. THE CONTRACTOR SHALL INSTALL THE CABINET ON THE EXISTING FOUNDATION AND FURNISH ALL ITEMS REQUIRED FOR INSTALLATION. THIS WORK WILL BE PAID FOR AS CONTROLLER CABINET, TYPE IV SPECIAL. |
| 19. | THE CONTRACTOR SHALL FURNISH TWO CHANNEL, RACK MOUNTED INDUCTIVE LOOP DETECTOR CARDS. THIS WORK WILL BE PAID FOR AS INDUCTIVE LOOP DETECTOR, RACK MOUNTED PER EACH TWO CHANNEL DETECTOR CARD FURNISHED AND INSTALLED.   |
| 20. | THE CONTRACTOR SHALL COORDINATE THE INSTALLATION OF THE PROPOSED TRAFFIC CABINETS WITH THE CONTRACTOR FOR CONTRACT 68H18 AT LOCATIONS WHERE THE EXISTING BBS SYSTEMS ARE BEING REPLACED UNDER THAT CONTRACT.  |

MODEL PATH: S:\CEN\WV\ORD\SP\AN\barson\68H17 D4 ITS System 2023.dgn  
FILE NAME: S:\CEN\WV\ORD\SP\AN\barson\68H17 D4 ITS System 2023.dgn

|                             |            |           |
|-----------------------------|------------|-----------|
| USER NAME = hansonj         | DESIGNED - | REVISED - |
| PLOT SCALE = 23,8272 */ in. | DRAWN -    | REVISED - |
| PLOT DATE = 7/8/2022        | CHECKED -  | REVISED - |
|                             | DATE -     | REVISED - |

**STATE OF ILLINOIS  
DEPARTMENT OF TRANSPORTATION**

**CONSTRUCTION NOTES**

SCALE: SHEET OF SHEETS STA. TO STA.

|           |                    |                           |                    |           |
|-----------|--------------------|---------------------------|--------------------|-----------|
| F.A. RTE. | SECTION            | COUNTY                    | TOTAL SHEETS       | SHEET NO. |
| VAR.      | D4 ITS SYSTEM 2023 | VARIOUS                   | 11                 | 3         |
|           |                    |                           | CONTRACT NO. 68H17 |           |
|           |                    | ILLINOIS FED. AID PROJECT |                    |           |

| SUMMARY OF QUANTITIES |   |       |            | VARIOUS                                    | HENDERSON COUNTY                           | MARSHALL COUNTY                           | MERCER COUNTY                             | PEORIA COUNTY                              |   |  |  |   | TAZEWELL COUNTY                                 |   |   |  |   |  |   | WOODFORD COUNTY                                |  |   |  |
|-----------------------|---|-------|------------|--|--|---|---|--|---|--|--|---|---|---|---|--|---|--|---|--|--|---|--|
|                       |   |       |            | CONST. TYPE CODE 0021 100% STATE 0% COUNTY | CONST. TYPE CODE 0021 100% STATE 0% COUNTY | CONST. TYPE CODE 0021 90% STATE 10% LACON | CONST. TYPE CODE 0021 100% STATE 0% ALEDO | CONST. TYPE CODE 0021 100% STATE 0% PEORIA | CONST. TYPE CODE 0021 93.3% STATE 6.7% PEORIA | CONST. TYPE CODE 0021 90% STATE 10% PEORIA | CONST. TYPE CODE 0021 80% STATE 20% PEORIA | CONST. TYPE CODE 0021 90% STATE 5% PEORIA HEIGHTS 5% PEORIA | CONST. TYPE CODE 0021 100% STATE 0% EAST PEORIA | CONST. TYPE CODE 0021 90% STATE 10% EAST PEORIA | CONST. TYPE CODE 0021 80% STATE 20% EAST PEORIA | CONST. TYPE CODE 0021 85% STATE 15% MORTON | CONST. TYPE CODE 0021 100% STATE 0% NORTH PEKIN | CONST. TYPE CODE 0021 93.3% STATE 6.7% NORTH PEKIN | CONST. TYPE CODE 0021 100% STATE 0% PEKIN | CONST. TYPE CODE 0021 100% STATE 0% WASHINGTON | CONST. TYPE CODE 0021 100% STATE 0% EUREKA | CONST. TYPE CODE 0021 93.3% STATE 6.7% EUREKA | CONST. TYPE CODE 0021 100% STATE 0% METAMORA |
|                       |   |       |            | ITS/ SIGNALS URBAN                         | ITS/ SIGNALS RURAL                         | ITS/ SIGNALS URBAN                        | ITS/ SIGNALS URBAN                        | ITS/ SIGNALS URBAN                         | ITS/ SIGNALS URBAN                            | ITS/ SIGNALS URBAN                         | ITS/ SIGNALS URBAN                         | ITS/ SIGNALS URBAN  | ITS/ SIGNALS URBAN                              | ITS/ SIGNALS URBAN                              | ITS/ SIGNALS URBAN                              | ITS/ SIGNALS URBAN                         | ITS/ SIGNALS URBAN                              | ITS/ SIGNALS URBAN                                 | ITS/ SIGNALS URBAN                        | ITS/ SIGNALS URBAN                             | ITS/ SIGNALS URBAN                         | ITS/ SIGNALS URBAN                            | ITS/ SIGNALS URBAN                           |
| PAY ITEM NO.          | ITEM DESCRIPTION                          | UNIT  | TOTAL QTY. | QTY.                                       | QTY.                                       | QTY.                                      | QTY.                                      | QTY.                                       | QTY.  | QTY.                                       | QTY.                                       | QTY.  | QTY.  | QTY.  | QTY.  | QTY.                                       | QTY.  | QTY.   | QTY.                                      | QTY.   | QTY.                                       | QTY.  |  |
| 42400100              | PORTLAND CEMENT CONCRETE SIDEWALK 4 INCH  | SQ FT | 40.0       |  |  |   |   |  |   |  | 40.0                                       |   |   |   |   |  |   |  |   |  |  |   |  |
| 44000600              | SIDEWALK REMOVAL                          | SQ FT | 40.0       |  |  |   |   |  |   |  | 40.0                                       |   |   |   |   |  |   |  |   |  |  |   |  |
| 67100100              | MOBILIZATION                              | L SUM | 1.0        |  | 0.1  | 0.1                                       | 0.1                                       | 0.1  |   |  | 0.2  |   |   |   |   | 0.1  |   |  | 0.1                                       | 0.1  |  | 0.1   |  |
| 81028370              | UNDERGROUND CONDUIT, PVC, 3" DIA.         | FOOT  | 11.0       |  |  |   |   |  |   |  | 11.0                                       |   |   |   |   |  |   |  |   |  |  |   |  |
| 86300400              | CONTROLLER CABINET TYPE IV                | EACH  | 27.0       |  | 1.0  |   | 1.0                                       | 1.0  | 3.0   | 6.0  | 1.0  | 1.0   | 1.0   | 3.0   | 1.0   | 1.0  | 1.0   | 1.0  | 1.0                                       | 1.0  | 1.0  | 1.0   |  |
| 87900100              | DRILL EXISTING FOUNDATION                 | EACH  | 1.0        |  |  |   |   |  |   |  | 1.0  |   |   |   |   |  |   |  |   |  |  |   |  |
| 87900200              | DRILL EXISTING HANDHOLE                   | EACH  | 1.0        |  |  |   |   |  |   |  | 1.0  |   |   |   |   |  |   |  |   |  |  |   |  |
| 89502220              | MODIFY EXISTING CONCRETE FOUNDATION       | EACH  | 2.0        |  |  |   |   |  | 1.0   |  | 1.0  |   |   |   |   |  |   |  |   |  |  |   |  |
| X0327739              | MISCELLANEOUS ELECTRICAL WORK             | L SUM | 1.0        | 1.0  |  |   |   |  |   |  |  |   |   |   |   |  |   |  |   |  |  |   |  |
| X7010216              | TRAFFIC CONTROL AND PROTECTION, (SPECIAL) | L SUM | 1.0        |  | 0.1  | 0.1                                       | 0.1                                       | 0.1  |   |  | 0.2  |   |   |   |   | 0.1  |   |  | 0.1                                       | 0.1  |  | 0.1   |  |
| X8630104              | CONTROLLER CABINET TYPE IV, SPECIAL       | EACH  | 1.0        |  |  | 1.0                                       |   |  |   |  |  |   |   |   |   |  |   |  |   |  |  |   |  |
| X8850106              | INDUCTIVE LOOP DETECTOR, RACK MOUNTED     | EACH  | 78.0       |  | 2.0  | 2.0                                       | 3.0                                       | 5.0  | 7.0   | 9.0  | 3.0  | 2.0   | 8.0   | 4.0   | 6.0   | 3.0  | 3.0   | 4.0  | 5.0                                       | 5.0  | 3.0  | 4.0   |  |

MODEL Path: S:\CEN\WV\ORD\SP\AN\barson\# 68H17 D4 ITS System 2023\68H17 D4 ITS System 2023.dgn  
 FILE NAME: S:\CEN\WV\ORD\SP\AN\barson\# 68H17 D4 ITS System 2023\68H17 D4 ITS System 2023.dgn

|                             |            |           |
|-----------------------------|------------|-----------|
| USER NAME = hansonj         | DESIGNED - | REVISED - |
|                             | DRAWN -    | REVISED - |
| PLOT SCALE = 23,8272 */ in. | CHECKED -  | REVISED - |
| PLOT DATE = 7/8/2022        | DATE -     | REVISED - |

**STATE OF ILLINOIS  
DEPARTMENT OF TRANSPORTATION**

|                              |       |    |        |
|------------------------------|-------|----|--------|
| <b>SUMMARY OF QUANTITIES</b> |       |    |        |
| SCALE:                       | SHEET | OF | SHEETS |
|                              | STA.  | TO | STA.   |

|           |                    |          |                    |           |
|-----------|--------------------|----------|--------------------|-----------|
| F.A. RTE. | SECTION            | COUNTY   | TOTAL SHEETS       | SHEET NO. |
| VAR.      | D4 ITS SYSTEM 2023 | VARIOUS  | 11                 | 4         |
|           |                    |          | CONTRACT NO. 68H17 |           |
|           |                    | ILLINOIS | FED. AID PROJECT   |           |

| PORTLAND CEMENT CONCRETE SIDEWALK 4 INCH |                         |   |                                |              |
|--|-------------------------|---|--------------------------------|--------------|
| COUNTY                                   | CITY                    | LOCATION                                | FUND CODE STATE / LOCAL AGENCY | QTY. (SQ FT) |
| PEORIA COUNTY                            | PEORIA / PEORIA HEIGHTS | US 150 (War Memorial) & Monroe/ Central | 90/5/5*                        | 40.0         |
| COUNTY TOTAL                             |                         |   |                                | 40.0         |

| SIDEWALK REMOVAL |                         |   |                                |              |
|------------------|-------------------------|---|--------------------------------|--------------|
| COUNTY           | CITY                    | LOCATION                                | FUND CODE STATE / LOCAL AGENCY | QTY. (SQ FT) |
| PEORIA COUNTY    | PEORIA / PEORIA HEIGHTS | US 150 (War Memorial) & Monroe/ Central | 90/5/5*                        | 40.0         |
| COUNTY TOTAL     |                         |   |                                | 40.0         |

| UNDERGROUND CONDUIT, PVC, 3" |                         |   |                                |             |
|------------------------------|-------------------------|---|--------------------------------|-------------|
| COUNTY                       | CITY                    | LOCATION                                | FUND CODE STATE / LOCAL AGENCY | QTY. (FOOT) |
| PEORIA COUNTY                | PEORIA / PEORIA HEIGHTS | US 150 (War Memorial) & Monroe/ Central | 90/5/5*                        | 11.0        |
| COUNTY TOTAL                 |                         |   |                                | 11.0        |

| CONTROLLER CABINET TYPE IV |                         |  |                                |             |      |
|----------------------------|-------------------------|--|--------------------------------|-------------|------|
| COUNTY                     | CITY                    | LOCATION                                       | FUND CODE STATE / LOCAL AGENCY | QTY. (EACH) |      |
| HENDERSON COUNTY           | HENDERSON COUNTY        | US 34 & Carman                                 | 100/0                          | 1.0         |      |
| COUNTY TOTAL               |                         |  |                                | 1.0         |      |
| MERCER COUNTY              | ALEDO                   | IL 94 (College) & IL 17 (Third)                | 100/0                          | 1.0         |      |
| COUNTY TOTAL               |                         |  |                                | 1.0         |      |
| PEORIA COUNTY              | PEORIA                  | US 150 (War Memorial) WB & IL 29 (Adams) Ramps | 100/0                          | 1.0         |      |
|                            |                         | US 150 (War Memorial) & Prospect               | 90/10                          | 1.0         |      |
|                            |                         | US 150 (War Memorial) & Grand                  | 93.3/6.7                       | 1.0         |      |
|                            |                         | IL 8 (Farmington) & Main                       | 93.3/6.7                       | 1.0         |      |
|                            |                         | IL 8 (Western) & Moss                          | 90/10                          | 1.0         |      |
|                            |                         | IL 29 (Adams) & Alexander                      | 90/10                          | 1.0         |      |
|                            |                         | IL 29 (Adams) & Sloan                          | 90/10                          | 1.0         |      |
|                            |                         | IL 29 (Adams) & Lorentz                        | 90/10                          | 1.0         |      |
|                            |                         | IL 29 (Galena) & Gardner                       | 93.3/6.7                       | 1.0         |      |
|                            |                         | IL 40 (Knoxville) & Lindbergh                  | 80/20                          | 1.0         |      |
| PEORIA / PEORIA HEIGHTS    | PEORIA / PEORIA HEIGHTS | IL 40 (Knoxville) & Mossville                  | 90/10                          | 1.0         |      |
|                            |                         | US 150 (War Memorial) & Monroe/ Central        | 90/5/5*                        | 1.0         |      |
| COUNTY TOTAL               |                         |  |                                | 12.0        |      |
| TAZEWELL COUNTY            | EAST PEORIA             | IL 116 (Main St) & Mariners Way/ Access Rd 6   | 90/10                          | 1.0         |      |
|                            |                         | IL 116 (Main St) & Washington                  | 90/10                          | 1.0         |      |
|                            |                         | IL 116 (Main St) & Highview                    | 90/10                          | 1.0         |      |
|                            |                         | IL 116 (Main St) & Gold/ Kroger Entrance       | 80/20                          | 1.0         |      |
|                            |                         | IL 116 (Main St) & Access Rd 8                 | 100/0                          | 1.0         |      |
|                            | MORTON                  | IL 98 (Birchwood) & Detroit                    | 85/15                          | 1.0         |      |
|                            | NORTH PEKIN             | IL 29 (Radio City) & IL 98 (Edgewater)         | 100/0                          | 1.0         |      |
|                            | WASHINGTON              | WASHINGTON                                     | IL 98 (Edgewater) & Main       | 93.3/6.7    | 1.0  |
|                            |                         |  | IL 98 & Parkway                | 100/0       | 1.0  |
|                            | COUNTY TOTAL            |  |                                |             | 10.0 |
| WOODFORD COUNTY            | EUREKA                  | US 24 (Center) & IL 117 (Main)                 | 100/0                          | 1.0         |      |
|                            |                         | IL 117 (Main) & Lake                           | 93.3/6.7                       | 1.0         |      |
|                            |                         | IL 116 (Mt. Vernon) & IL 89 (Niles)            | 100/0                          | 1.0         |      |
| COUNTY TOTAL               |                         |  |                                | 3.0         |      |

| DRILL EXISTING FOUNDATION |                         |   |                                |             |
|---------------------------|-------------------------|---|--------------------------------|-------------|
| COUNTY                    | CITY                    | LOCATION                                | FUND CODE STATE / LOCAL AGENCY | QTY. (EACH) |
| PEORIA COUNTY             | PEORIA / PEORIA HEIGHTS | US 150 (War Memorial) & Monroe/ Central | 90/5/5*                        | 1.0         |
| COUNTY TOTAL              |                         |   |                                | 1.0         |

| DRILL EXISTING HANDHOLE |                         |   |                                |             |
|-------------------------|-------------------------|---|--------------------------------|-------------|
| COUNTY                  | CITY                    | LOCATION                                | FUND CODE STATE / LOCAL AGENCY | QTY. (EACH) |
| PEORIA COUNTY           | PEORIA / PEORIA HEIGHTS | US 150 (War Memorial) & Monroe/ Central | 90/5/5*                        | 1.0         |
| COUNTY TOTAL            |                         |   |                                | 1.0         |

| MODIFY EXISTING CONCRETE FOUNDATION |                         |   |                                |             |
|-------------------------------------|-------------------------|---|--------------------------------|-------------|
| COUNTY                              | CITY                    | LOCATION                                | FUND CODE STATE / LOCAL AGENCY | QTY. (EACH) |
| PEORIA COUNTY                       | PEORIA                  | IL 8 (Farmington) & Main                | 93.3/6.7                       | 1.0         |
|                                     | PEORIA / PEORIA HEIGHTS | US 150 (War Memorial) & Monroe/ Central | 90/5/5*                        | 1.0         |
|                                     | COUNTY TOTAL            |   |                                |             |

| CONTROLLER CABINET TYPE IV, SPECIAL |       |                      |                                |             |
|-------------------------------------|-------|----------------------|--------------------------------|-------------|
| COUNTY                              | CITY  | LOCATION             | FUND CODE STATE / LOCAL AGENCY | QTY. (EACH) |
| MARSHALL COUNTY                     | LACON | IL 17 (Fifth) & High | 90/10                          | 1.0         |
| COUNTY TOTAL                        |       |                      |                                | 1.0         |

| INDUCTIVE LOOP DETECTOR, RACK MOUNTED    |                  |  |  |             |      |
|--|------------------|--|--|-------------|------|
| COUNTY                                   | CITY             | LOCATION                                       | FUND CODE STATE / LOCAL AGENCY               | QTY. (EACH) |      |
| HENDERSON COUNTY                         | HENDERSON COUNTY | US 34 & Carman                                 | 100/0  | 2.0         |      |
| COUNTY TOTAL                             |                  |  |  | 2.0         |      |
| MARSHALL COUNTY                          | LACON            | IL 17 (Fifth) & High                           | 90/10  | 2.0         |      |
| COUNTY TOTAL                             |                  |  |  | 2.0         |      |
| MERCER COUNTY                            | ALEDO            | IL 94 (College) & IL 17 (Third)                | 100/0  | 3.0         |      |
| COUNTY TOTAL                             |                  |  |  | 3.0         |      |
| PEORIA COUNTY                            | PEORIA           | US 150 (War Memorial) WB & IL 29 (Adams) Ramps | 100/0  | 5.0         |      |
|  |                  | US 150 (War Memorial) & Grand                  | 93.3/6.7                                     | 4.0         |      |
|  |                  | IL 8 (Farmington) & Main                       | 90/10  | 3.0         |      |
|  |                  | IL 29 (Adams) & Alexander                      | 90/10  | 3.0         |      |
|  |                  | IL 29 (Adams) & Sloan                          | 90/10  | 3.0         |      |
|  |                  | IL 29 (Galena) & Gardner                       | 93.3/6.7                                     | 3.0         |      |
|  |                  | PEORIA / PEORIA HEIGHTS                        | US 150 (War Memorial) & Monroe/ Central      | 90/5/5*     | 3.0  |
|  | COUNTY TOTAL     |  |  |             | 24.0 |
|  | TAZEWELL COUNTY  | EAST PEORIA                                    | IL 116 (Main St) & Mariners Way/ Access Rd 6 | 90/10       | 3.0  |
|  |                  |  | IL 116 (Main St) & Highview                  | 90/10       | 5.0  |
| IL 116 (Main St) & Gold/ Kroger Entrance |                  |  | 80/20  | 4.0         |      |
| IL 116 (Main St) & Access Rd 8           |                  |  | 100/0  | 2.0         |      |
| MORTON                                   |                  | IL 98 (Birchwood) & Detroit                    | 85/15  | 6.0         |      |
| NORTH PEKIN                              |                  | NORTH PEKIN                                    | IL 29 (Radio City) & IL 98 (Edgewater)       | 100/0       | 3.0  |
|  |                  |  | IL 98 (Edgewater) & Main                     | 93.3/6.7    | 3.0  |
| PEKIN                                    |                  | IL 98 & Parkway                                | 100/0  | 4.0         |      |
| WASHINGTON                               |                  | IL 8 (Washington) & BUS 24 (McClugage)         | 100/0  | 5.0         |      |
| COUNTY TOTAL                             |                  |  |  | 35.0        |      |
| WOODFORD COUNTY                          | EUREKA           | US 24 (Center) & IL 117 (Main)                 | 100/0  | 5.0         |      |
|  |                  | IL 117 (Main) & Lake                           | 93.3/6.7                                     | 3.0         |      |
|  | METAMORA         | IL 116 (Mt. Vernon) & IL 89 (Niles)            | 100/0  | 4.0         |      |
| COUNTY TOTAL                             |                  |  |  | 12.0        |      |

\* THE COST OF WORK DONE AT THE INTERSECTION OF US 150 (WAR MEMORIAL DR.) & MONROE/ CENTRAL IS SPLIT AS FOLLOWS: 90% STATE, 5% CITY OF PEORIA, 5% CITY OF PEORIA HEIGHTS.

MODEL: D:\p\h\p... FILE NAME: S:\CEN\WV\ORD\DESIGN\AN\barson# 68H17.D4 ITS System 2023\68H17.D4 ITS System 2023.dgn

|                             |            |           |
|-----------------------------|------------|-----------|
| USER NAME = hansonj         | DESIGNED - | REVISED - |
|                             | DRAWN -    | REVISED - |
| PLOT SCALE = 23,8272' / in. | CHECKED -  | REVISED - |
| PLOT DATE = 7/8/2022        | DATE -     | REVISED - |

**STATE OF ILLINOIS  
DEPARTMENT OF TRANSPORTATION**

**SCHEDULE OF QUANTITIES**

SCALE: SHEET OF SHEETS STA. TO STA.

| F.A. RTE. | SECTION            | COUNTY                    | TOTAL SHEETS       | SHEET NO. |
|-----------|--------------------|---------------------------|--------------------|-----------|
| VAR.      | D4 ITS SYSTEM 2023 | VARIOUS                   | 11                 | 5         |
|           |                    |                           | CONTRACT NO. 68H17 |           |
|           |                    | ILLINOIS FED. AID PROJECT |                    |           |

CONT CAB TYPE IV  
1.0 EACH (INSTALL ON MODIFIED  
CONCRETE FOUNDATION)

DRILL EX FOUNDATION  
1.0 EACH

MOD EX CONC FDN  
1.0 EACH

PC CONC SIDEWALK 4  
40.0 SQ FT  
SIDEWALK REM  
40.0 SQ FT

EX. WATER METER VALVE

BBS

EX. CONDUIT

EX. BBS RE-INSTALLED  
ON PROP. SIGNAL CABINET

EX. WATER LINE

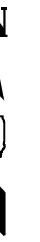
EX. CONDUIT

EX. MAST ARM FOUNDATION

UNDRGRD C PVC 3  
11.0 FT.

DRILL EX HANDHOLE  
1.0 EACH

MONROE AVE./  
CENTRAL AVE.



US 150 (WAR MEMORIAL)

| BILL OF MATERIALS                        |       |      |
|--|-------|------|
| US 150 & MONROE/ CENTRAL                 |       |      |
| ITEM DESCRIPTION                         | UNIT  | QTY. |
| PORTLAND CEMENT CONCRETE SIDEWALK 4 INCH | SQ FT | 40.0 |
| SIDEWALK REMOVAL                         | SQ FT | 40.0 |
| UNDERGROUND CONDUIT, PVC, 3" DIA.        | FOOT  | 11.0 |
| MODIFY EXISTING CONCRETE FOUNDATION      | EACH  | 1.0  |
| CONTROLLER CABINET TYPE IV               | EACH  | 1.0  |
| DRILL EXISTING FOUNDATION                | EACH  | 1.0  |
| DRILL EXISTING HANDHOLE                  | EACH  | 1.0  |

NOTES:

1. THE CONTRACTOR SHALL DISCONNECT THE TRAFFIC SIGNAL FIELD WIRING AND PULL IT INTO THE EXISTING HANDHOLE. THE CONTRACTOR SHALL RE-INSTALL THE EXISTING FIELD WIRING IN THE PROPOSED CONDUIT BETWEEN THE HANDHOLE AND CONTROLLER CABINET. THE COST OF THIS WORK SHALL BE INCLUDED IN THE BID PRICE FOR THE PROPOSED CONTROLLER CABINET.

NOT TO SCALE

MODEL: D:\p\h\p\... FILE NAME: S:\CEN\WV\ORD\DESIGN\AN\barson\# 68H17 D4 ITS System 2023\68H17 D4 ITS System 2023.dgn

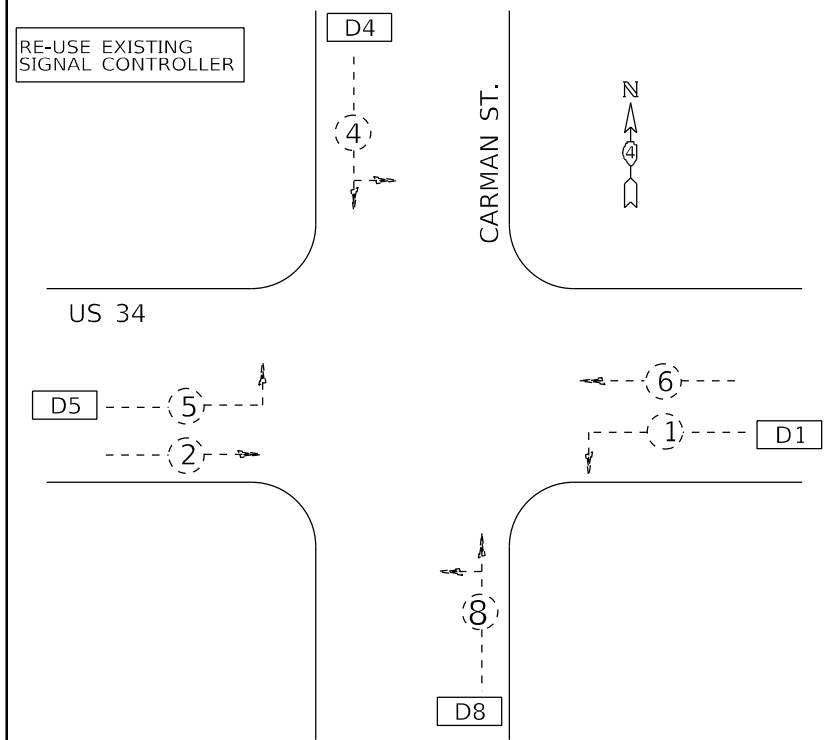
|                              |            |           |
|------------------------------|------------|-----------|
| USER NAME = hansonj          | DESIGNED - | REVISED - |
|                              | DRAWN -    | REVISED - |
| PLOT SCALE = 23,8272 * / in. | CHECKED -  | REVISED - |
| PLOT DATE = 7/8/2022         | DATE -     | REVISED - |

STATE OF ILLINOIS  
DEPARTMENT OF TRANSPORTATION

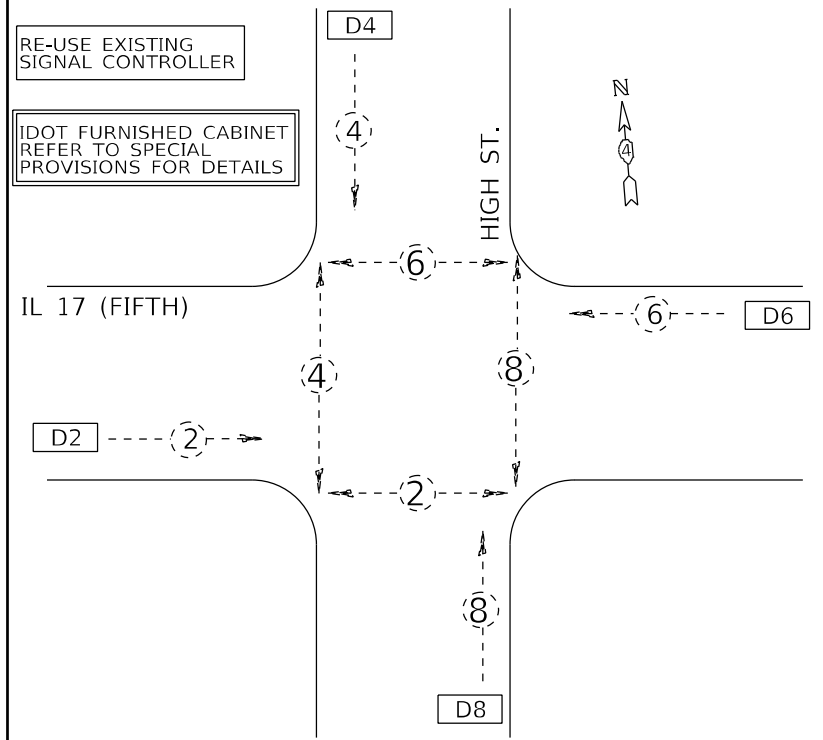
|  |       |           |              |
|--|-------|-----------|--------------|
| PROPOSED TRAFFIC SIGNAL PLANS          |       |           |              |
| US 150 (WAR MEMORIAL) & MONROE/CENTRAL |       |           |              |
| SCALE:                                 | SHEET | OF SHEETS | STA. TO STA. |

|           |                    |                           |                    |           |
|-----------|--------------------|---------------------------|--------------------|-----------|
| F.A. RTE. | SECTION            | COUNTY                    | TOTAL SHEETS       | SHEET NO. |
| VAR.      | D4 ITS SYSTEM 2023 | PEORIA                    | 11                 | 6         |
|           |                    |                           | CONTRACT NO. 68H17 |           |
|           |                    | ILLINOIS FED. AID PROJECT |                    |           |

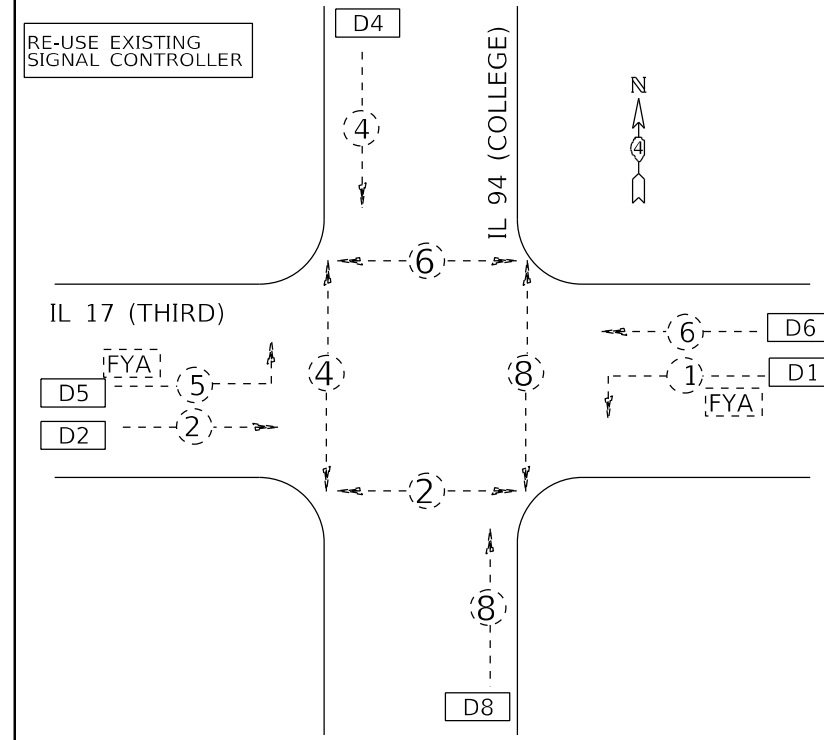
US 34 & CARMAN - HENDERSON COUNTY



IL 17 (FIFTH) & HIGH - LACON



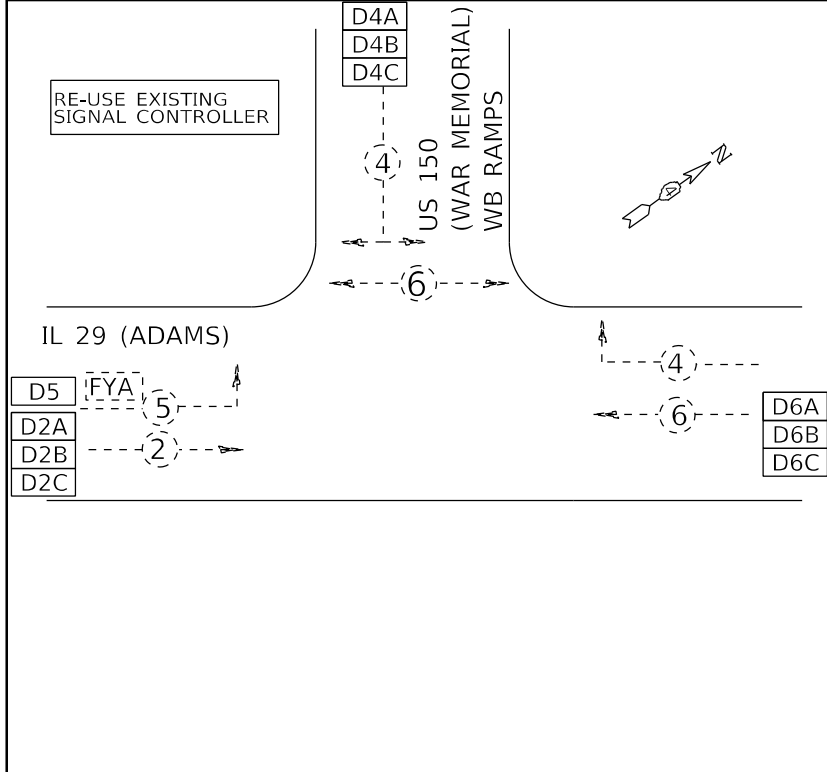
IL 94 (COLLEGE) & IL 17 (THIRD) - ALEDO



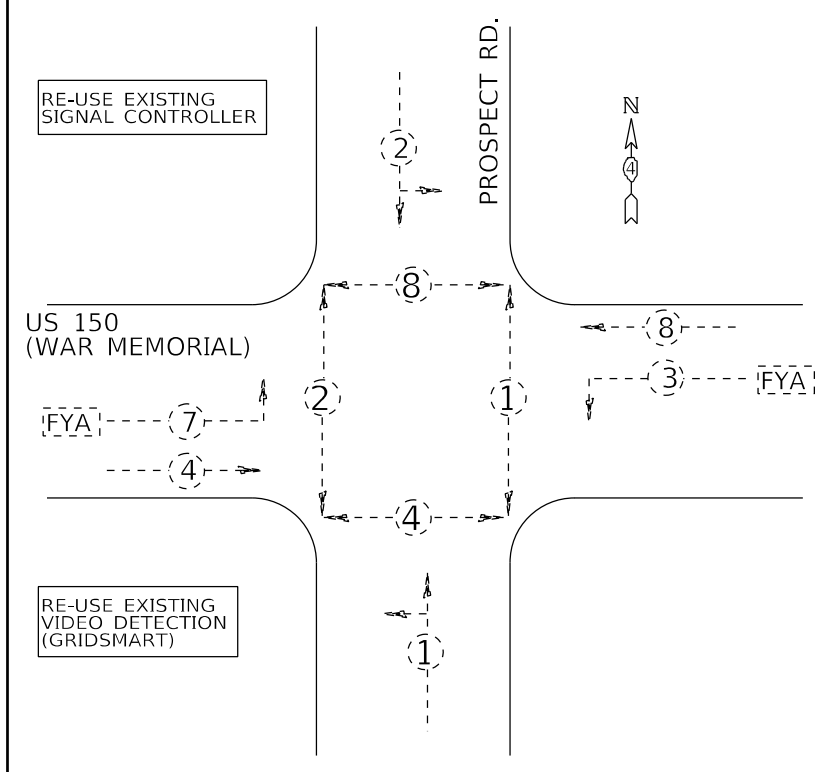
DETECTOR LEGEND

|                               |
|-------------------------------|
| D##                           |
| ## INDICATES PHASE ASSIGNMENT |

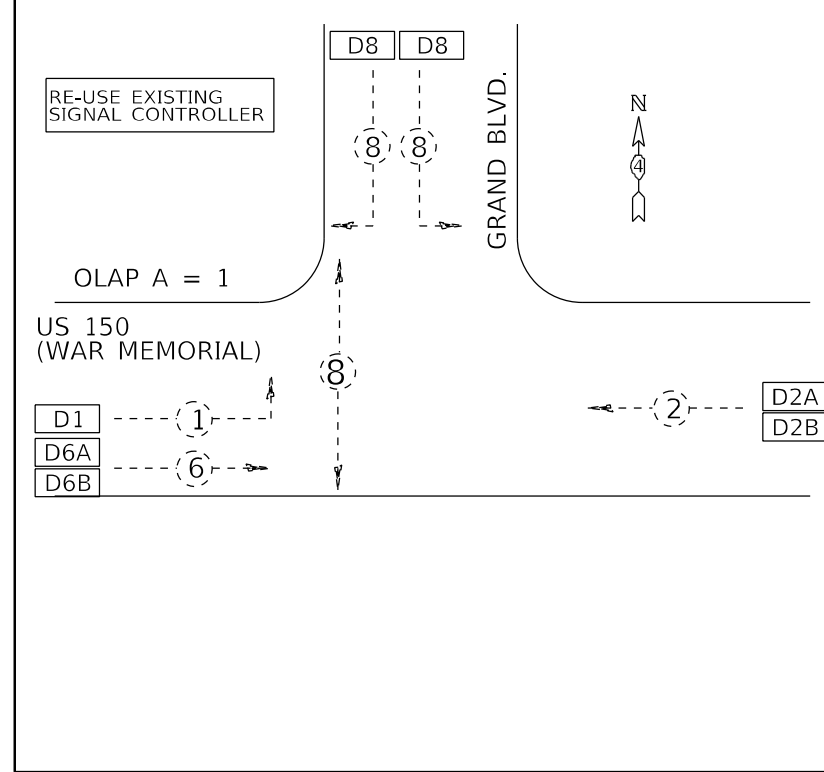
US 150 (WAR MEMORIAL) WB & IL 29 (ADAMS) RAMPS - PEORIA



US 150 (WAR MEMORIAL DR.) & PROSPECT RD. - PEORIA



US 150 (WAR MEMORIAL DR.) & GRAND BLVD. - PEORIA



MODEL: D:\p\h\... FILE NAME: S:\CEN\WV\ORD\DESIGN\AN\Hanson\68H17.D4 ITS System 2023.dgn

|                              |            |           |
|------------------------------|------------|-----------|
| USER NAME = hansonj          | DESIGNED - | REVISED - |
| PLOT SCALE = 23,8272 * / in. | DRAWN -    | REVISED - |
| PLOT DATE = 7/8/2022         | CHECKED -  | REVISED - |
|                              | DATE -     | REVISED - |

STATE OF ILLINOIS  
DEPARTMENT OF TRANSPORTATION

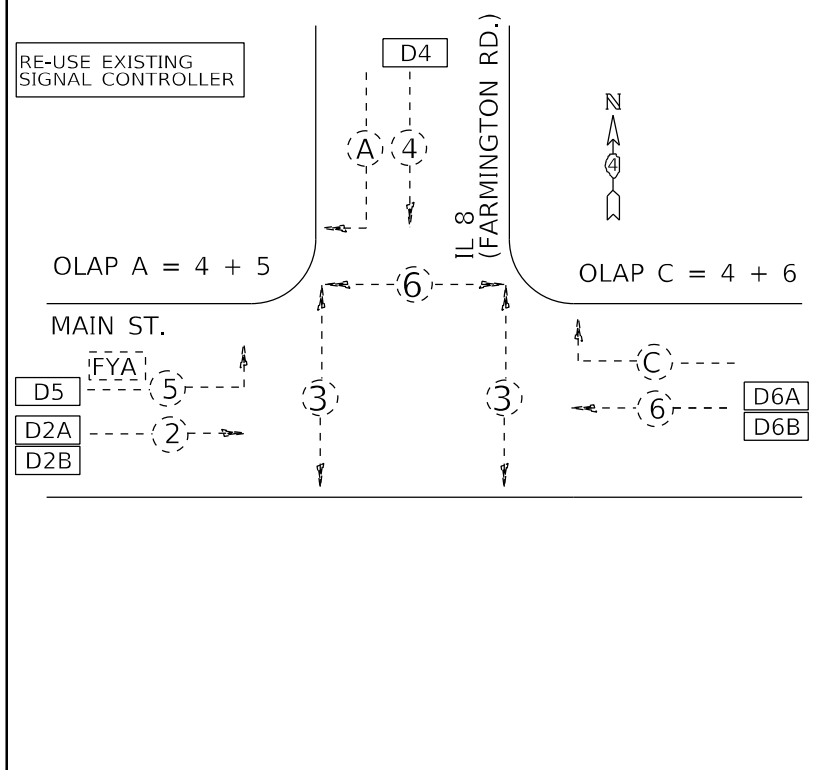
TRAFFIC SIGNAL PHASE DIAGRAMS

|        |       |    |        |      |    |      |
|--------|-------|----|--------|------|----|------|
| SCALE: | SHEET | OF | SHEETS | STA. | TO | STA. |
|--------|-------|----|--------|------|----|------|

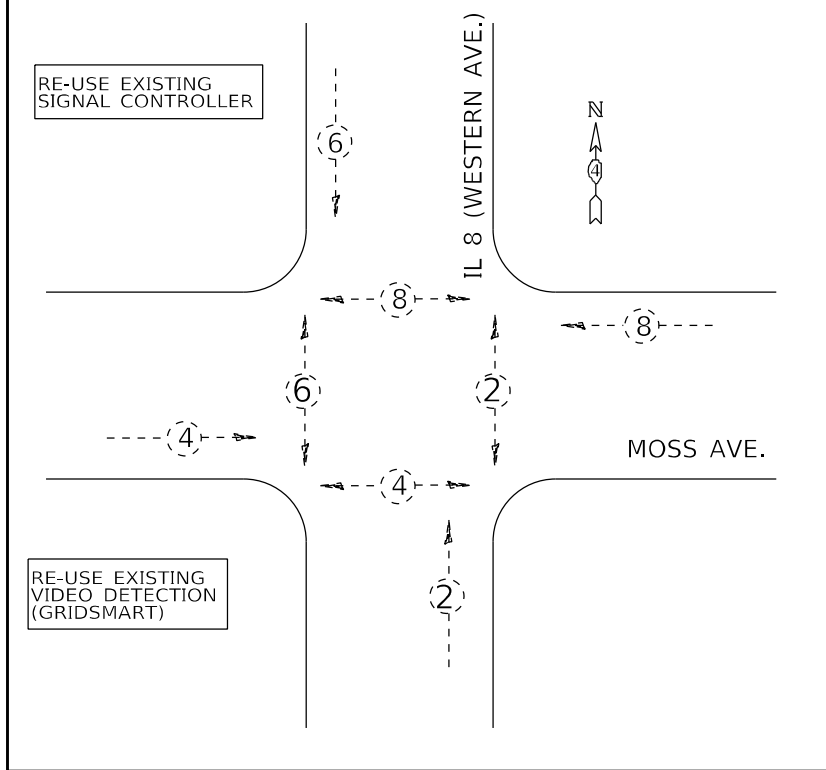
|                           |                    |        |              |           |
|---------------------------|--------------------|--------|--------------|-----------|
| F.A. RTE.                 | SECTION            | COUNTY | TOTAL SHEETS | SHEET NO. |
| VAR.                      | D4 ITS SYSTEM 2023 | PEORIA | 11           | 7         |
| CONTRACT NO. 68H17        |                    |        |              |           |
| ILLINOIS FED. AID PROJECT |                    |        |              |           |

NOT TO SCALE

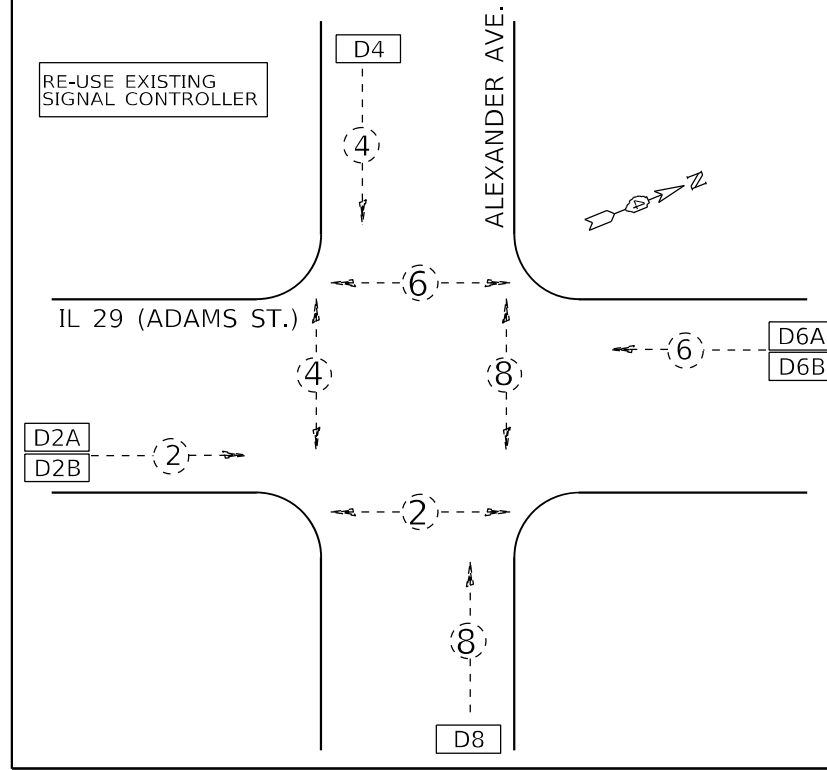
IL 8 (FARMINGTON RD.) & MAIN ST. - PEORIA



IL 8 (WESTERN AVE.) & MOSS AVE. - PEORIA



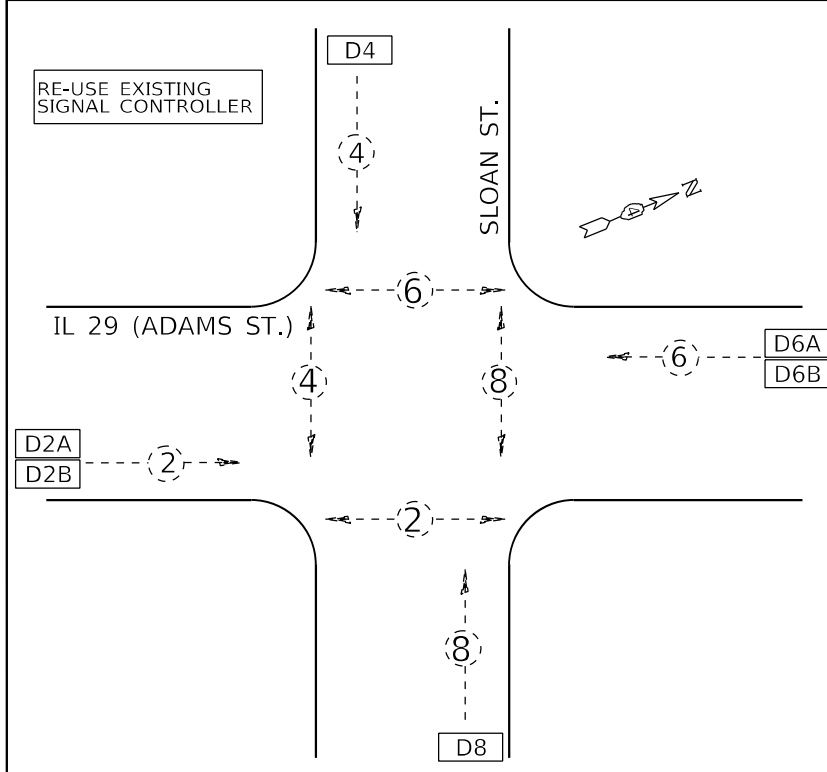
IL 29 (ADAMS ST.) & ALEXANDER AVE. - PEORIA



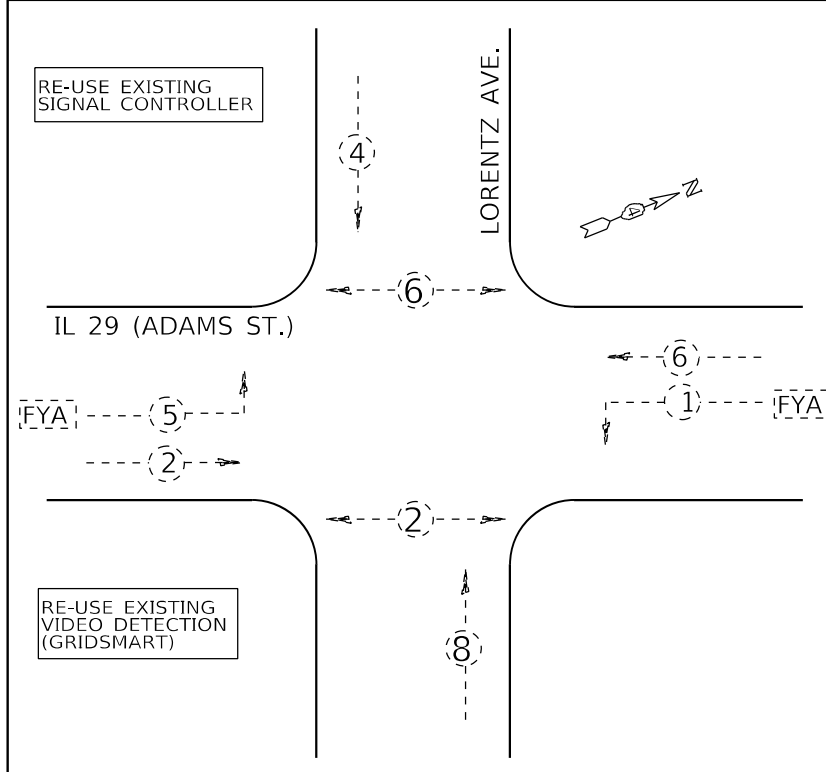
DETECTOR LEGEND

|                               |
|-------------------------------|
| D##                           |
| ## INDICATES PHASE ASSIGNMENT |

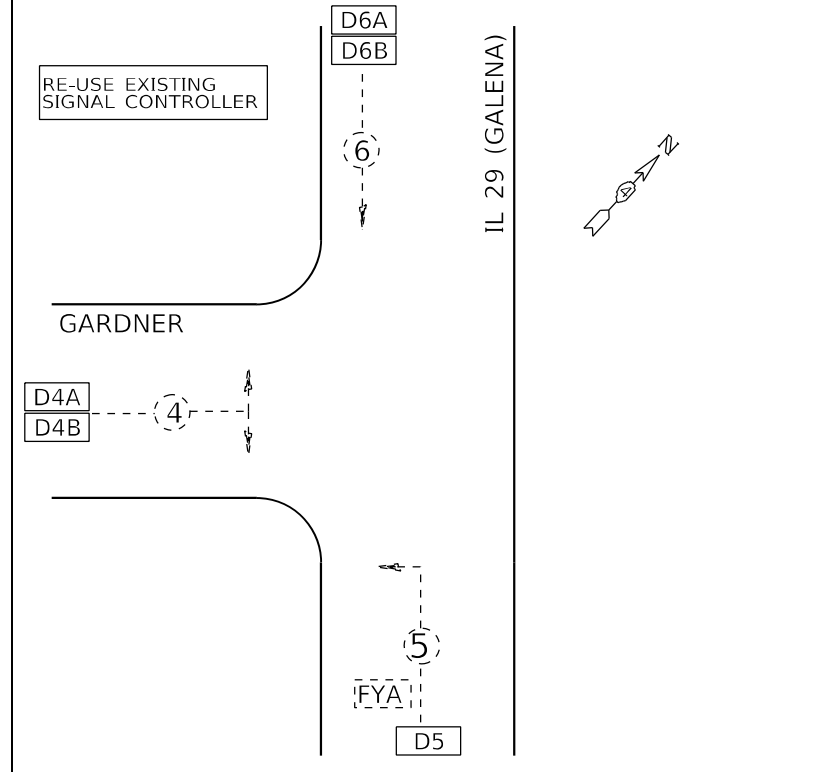
IL 29 (ADAMS ST.) & SLOAN ST. - PEORIA



IL 29 (ADAMS ST.) & LORENTZ AVE. - PEORIA



IL 29 (GALENA) & GARDNER - PEORIA



MODEL D:\p4\h\... FILE NAME: S:\CEN\WV\ORD\DESIGN\AN\hanson\68H17 D4 ITS System 2023\68H17 D4 ITS System 2023.dgn

|                              |            |           |
|------------------------------|------------|-----------|
| USER NAME = hansonj          | DESIGNED - | REVISED - |
| PLOT SCALE = 23,8272 * / in. | DRAWN -    | REVISED - |
| PLOT DATE = 7/8/2022         | CHECKED -  | REVISED - |
|                              | DATE -     | REVISED - |

STATE OF ILLINOIS  
DEPARTMENT OF TRANSPORTATION

TRAFFIC SIGNAL PHASE DIAGRAMS - CONTINUED

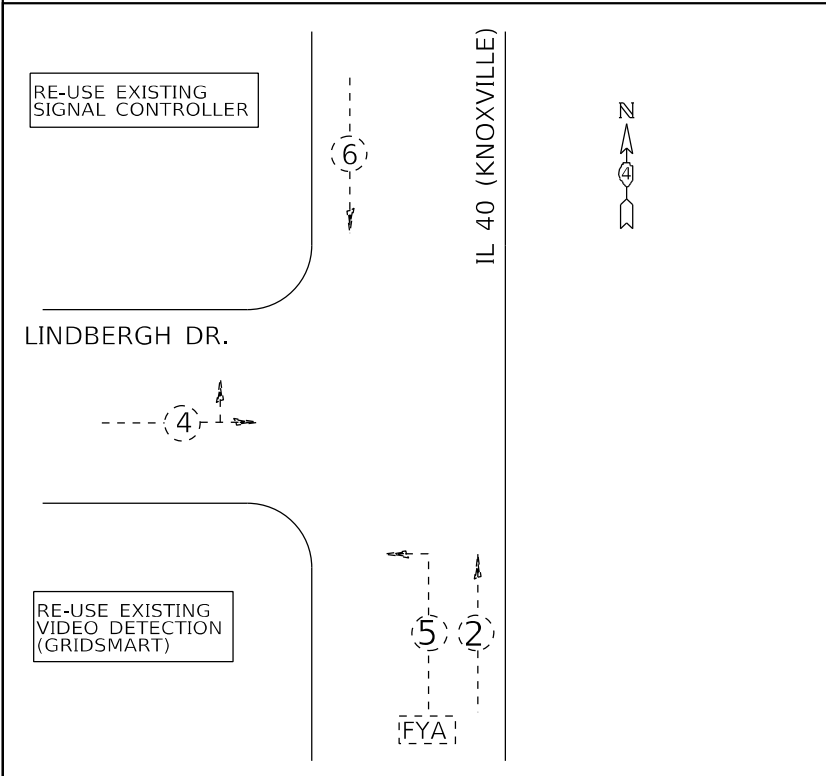
SCALE: SHEET OF SHEETS STA. TO STA.

|                           |                    |        |                    |           |
|---------------------------|--------------------|--------|--------------------|-----------|
| F.A. RTE.                 | SECTION            | COUNTY | TOTAL SHEETS       | SHEET NO. |
| VAR.                      | D4 ITS SYSTEM 2023 | PEORIA | 11                 | 8         |
| ILLINOIS FED. AID PROJECT |                    |        | CONTRACT NO. 68H17 |           |

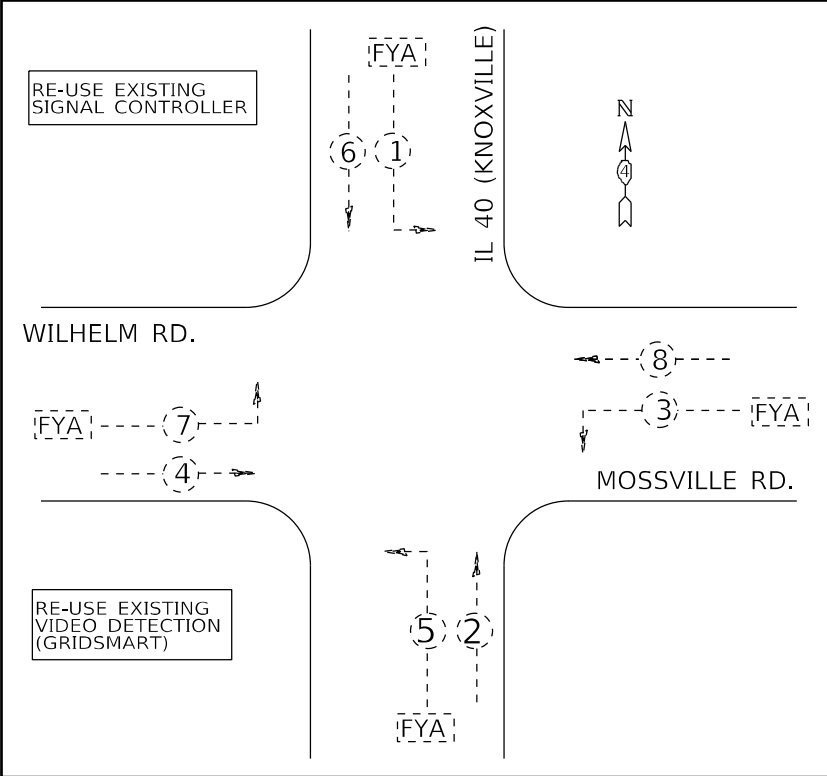
NOT TO SCALE



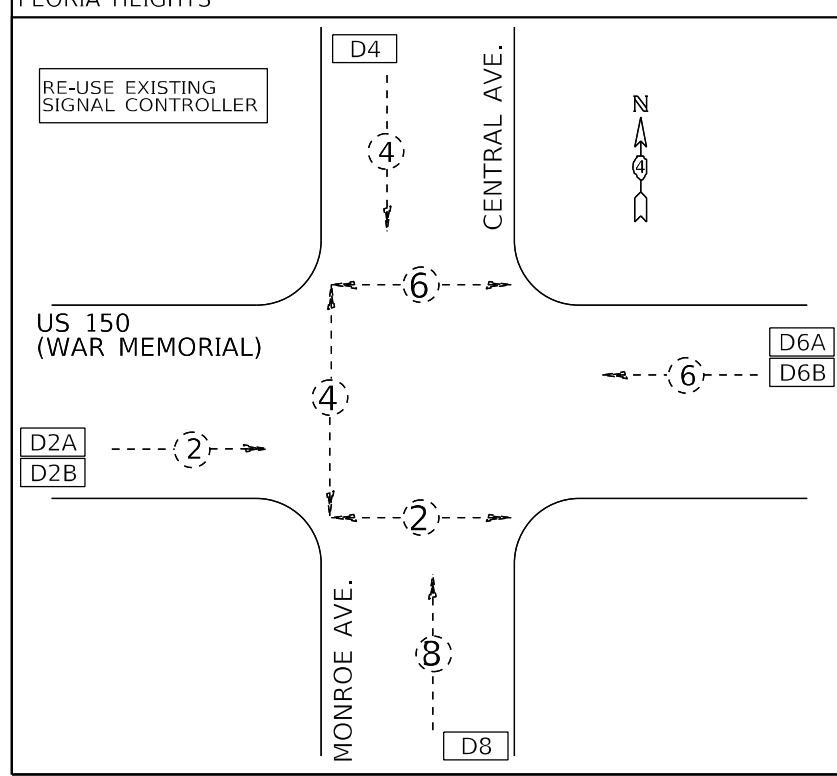
IL 40 (KNOXVILLE) & LINDBERGH DR. - PEORIA



IL 40 (KNOXVILLE) & MOSSVILLE RD./ WILHELM RD. - PEORIA

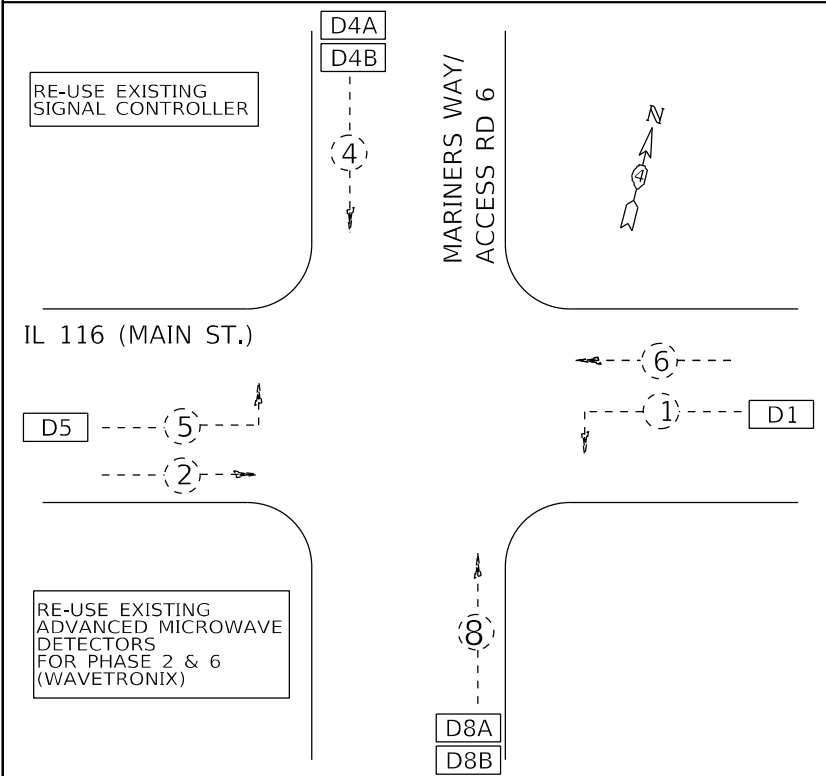


US 150 (WAR MEMORIAL) & MONROE/ CENTRAL - PEORIA/ PEORIA HEIGHTS

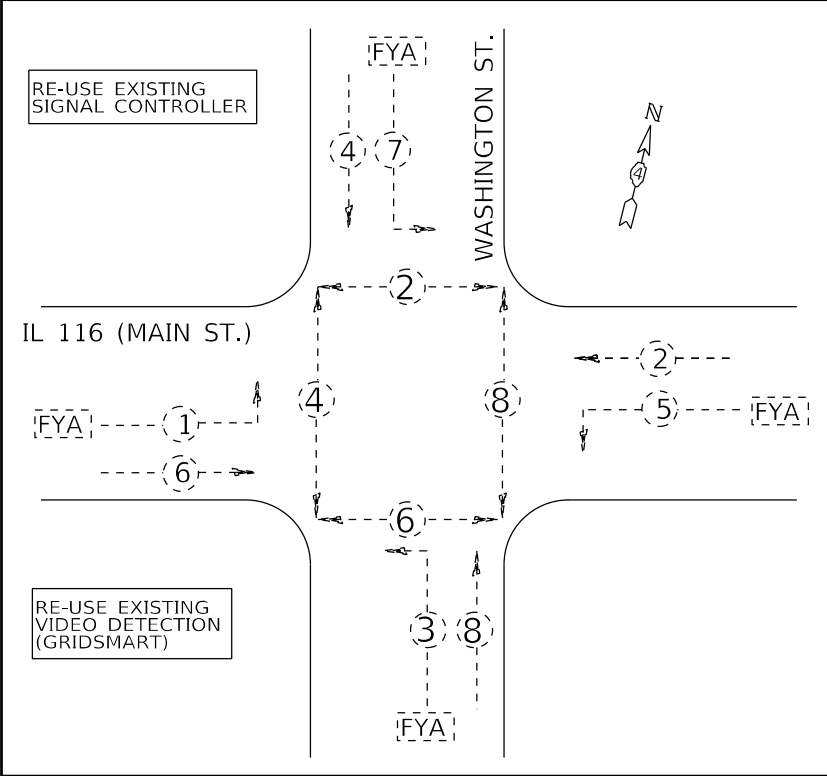


| DETECTOR LEGEND |                            |
|-----------------|----------------------------|
| D##             |                            |
| ##              | INDICATES PHASE ASSIGNMENT |

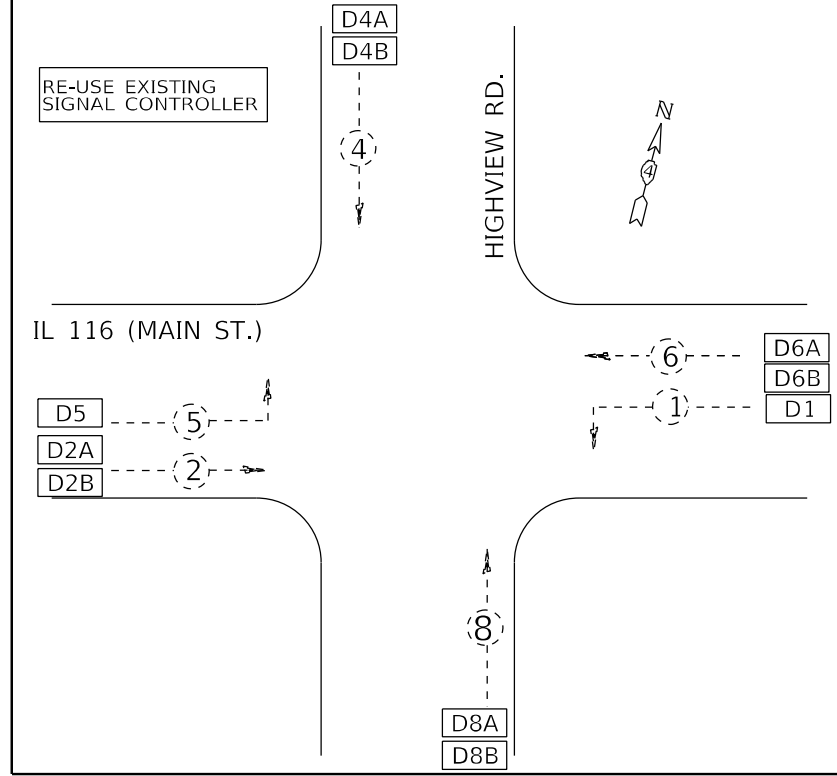
IL 116 (MAIN ST.) & MARINERS WAY/ ACCESS RD 6 - EAST PEORIA



IL 116 (MAIN ST.) & WASHINGTON ST. - EAST PEORIA



IL 116 (MAIN ST.) & HIGHVIEW - EAST PEORIA



MODEL: D:\p\h\... FILE NAME: S:\CEN\WV\ORD\ESP\AN\barson\# 68H17 D4 ITS System 2023\68H17 D4 ITS System 2023.dgn

|                              |            |           |
|------------------------------|------------|-----------|
| USER NAME = hansonj          | DESIGNED - | REVISED - |
|                              | DRAWN -    | REVISED - |
| PLOT SCALE = 23,8272 * / in. | CHECKED -  | REVISED - |
| PLOT DATE = 7/8/2022         | DATE -     | REVISED - |

STATE OF ILLINOIS  
DEPARTMENT OF TRANSPORTATION

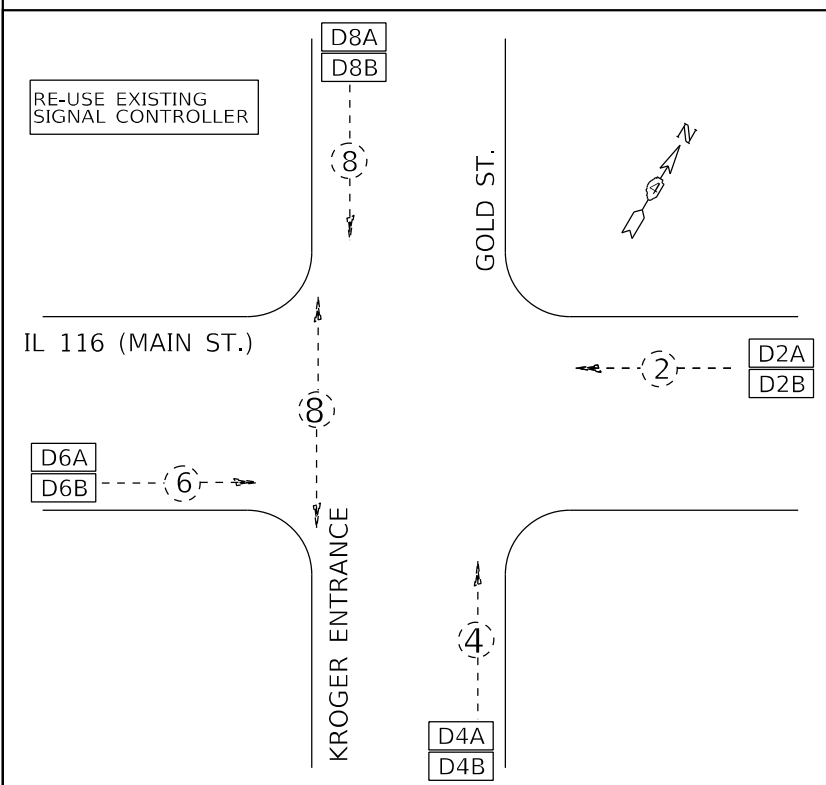
TRAFFIC SIGNAL PHASE DIAGRAMS - CONTINUED

SCALE: SHEET OF SHEETS STA. TO STA.

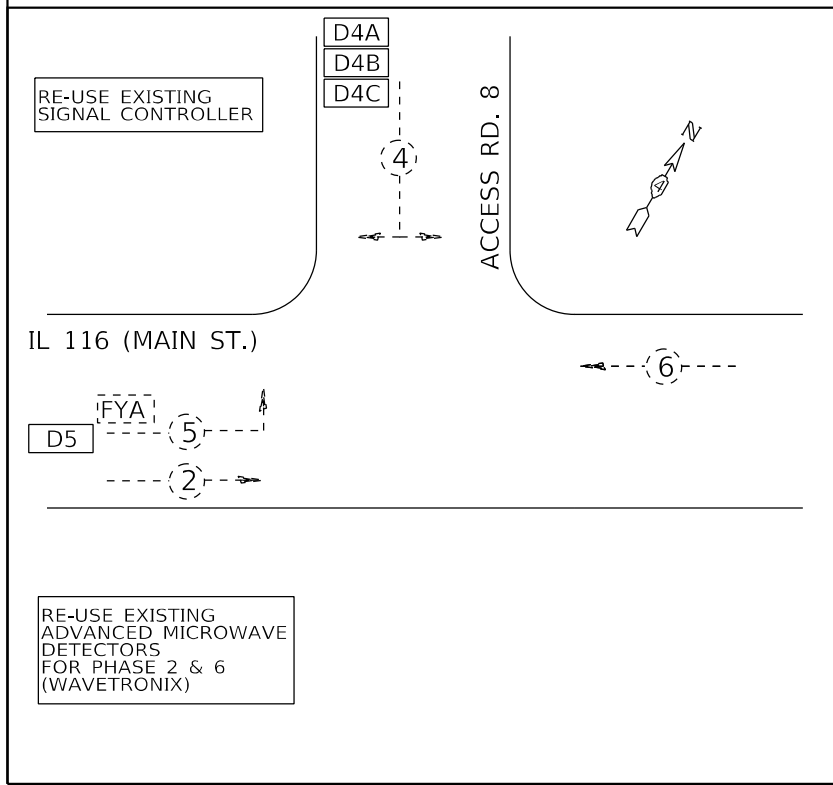
| F.A. RTE.                 | SECTION            | COUNTY | TOTAL SHEETS | SHEET NO. |
|---------------------------|--------------------|--------|--------------|-----------|
|                           | D4 ITS SYSTEM 2023 | PEORIA | 11           | 9         |
| CONTRACT NO. 68H17        |                    |        |              |           |
| ILLINOIS FED. AID PROJECT |                    |        |              |           |

NOT TO SCALE

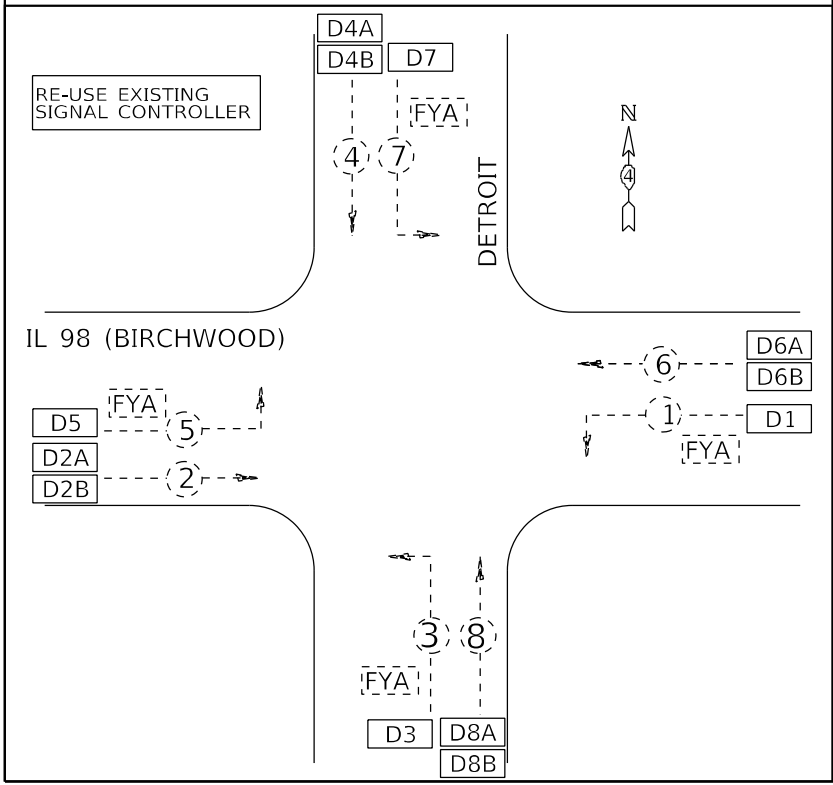
IL 116 (MAIN ST.) & GOLD ST./ KROGER ENTRANCE - EAST PEORIA



IL 116 (MAIN ST.) & ACCESS RD. 8 - EAST PEORIA

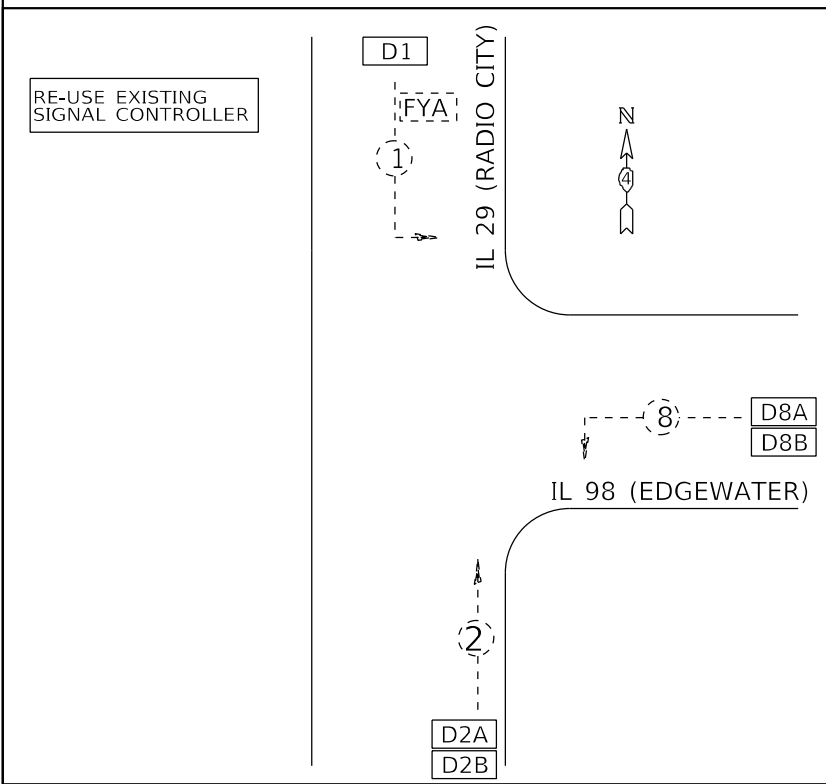


IL 98 (BIRCHWOOD) & DETROIT - MORTON

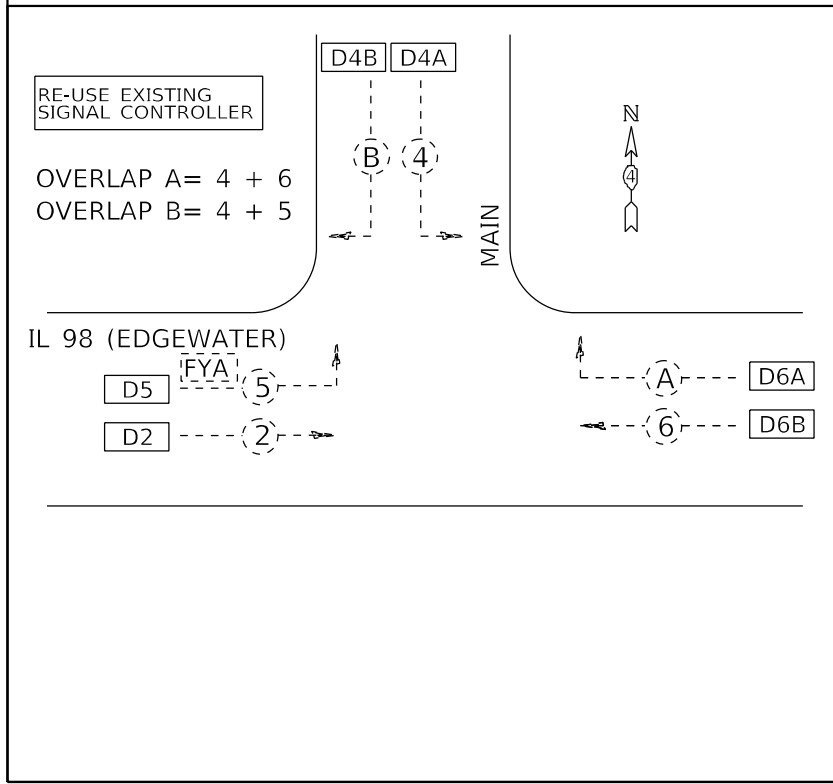


| DETECTOR LEGEND |                            |
|-----------------|----------------------------|
| D##             | INDICATES PHASE ASSIGNMENT |

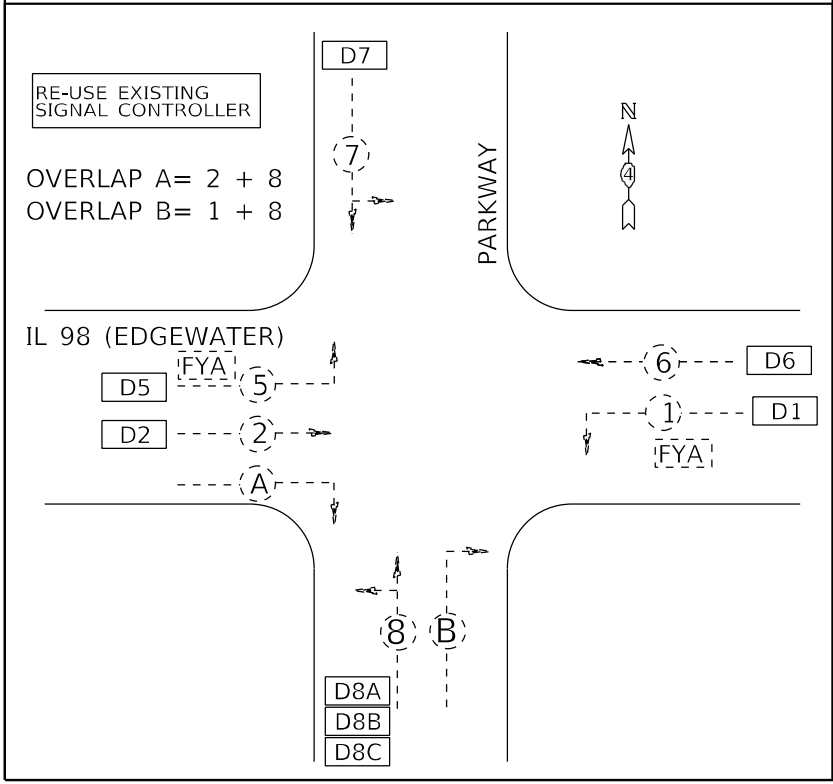
IL 29 (RADIO CITY) & IL 98 (EDGEWATER) - NORTH PEKIN



IL 98 (EDGEWATER) & MAIN - NORTH PEKIN



IL 98 (EDGEWATER) & PARKWAY - PEKIN



MODEL: D:\p\h\... FILE NAME: S:\CEN\W\W\ORD\ESP\AN\hanson\68H17 D4 ITS System 2023.dgn

|                              |            |           |
|------------------------------|------------|-----------|
| USER NAME = hansonj          | DESIGNED - | REVISED - |
|                              | DRAWN -    | REVISED - |
| PLOT SCALE = 23,8272 * / in. | CHECKED -  | REVISED - |
| PLOT DATE = 7/8/2022         | DATE -     | REVISED - |

STATE OF ILLINOIS  
DEPARTMENT OF TRANSPORTATION

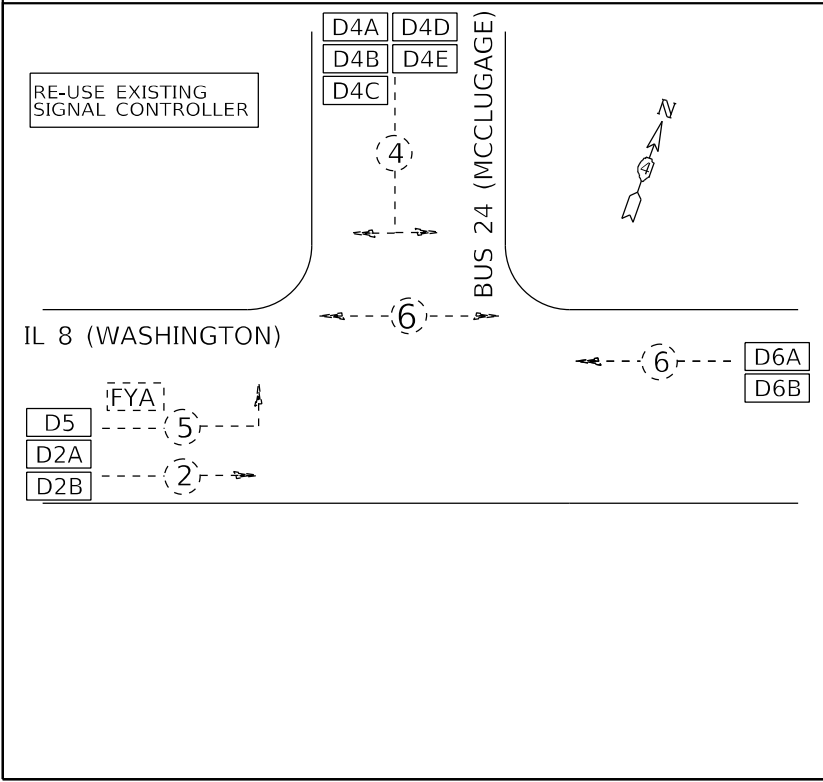
TRAFFIC SIGNAL PHASE DIAGRAMS - CONTINUED

SCALE: SHEET OF SHEETS STA. TO STA.

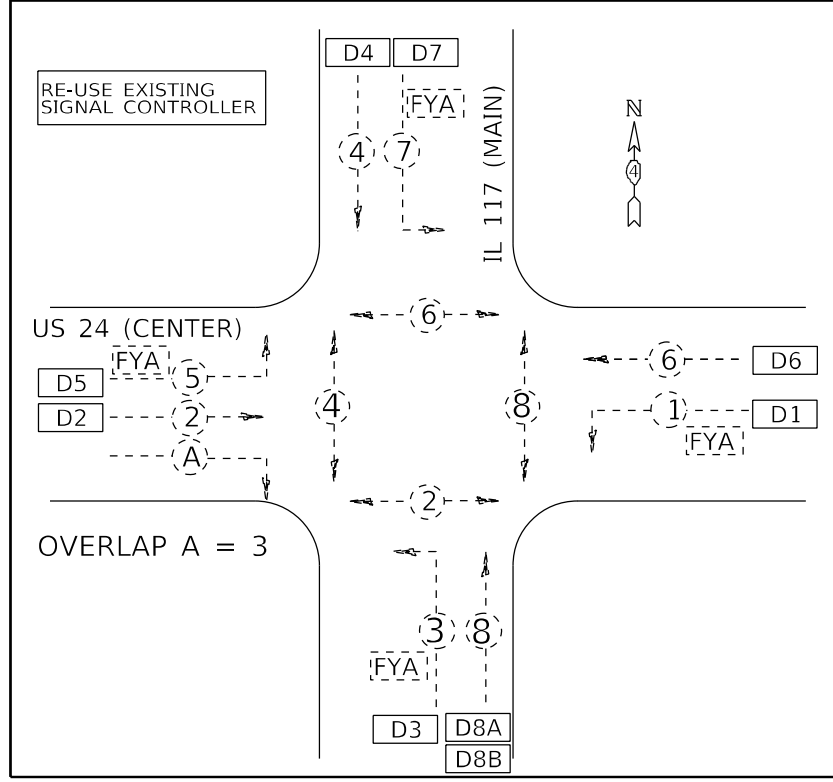
| F.A. RTE.                 | SECTION            | COUNTY | TOTAL SHEETS | SHEET NO. |
|---------------------------|--------------------|--------|--------------|-----------|
| VAR.                      | D4 ITS SYSTEM 2023 | PEORIA | 11           | 10        |
| CONTRACT NO. 68H17        |                    |        |              |           |
| ILLINOIS FED. AID PROJECT |                    |        |              |           |

NOT TO SCALE

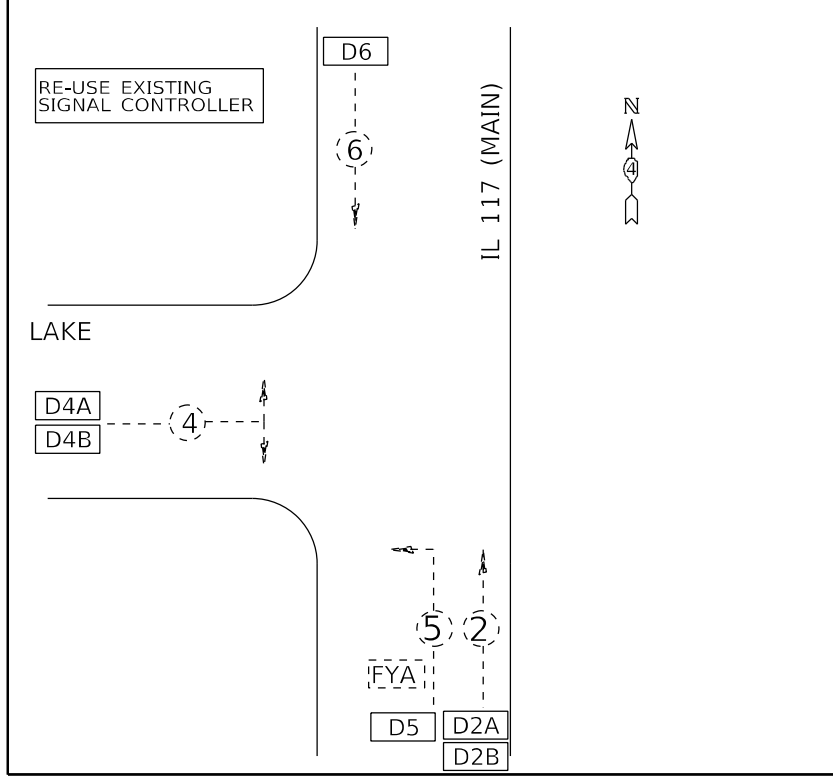
IL 8 (WASHINGTON) & BUS 24 (MCCLUGAGE) - WASHINGTON



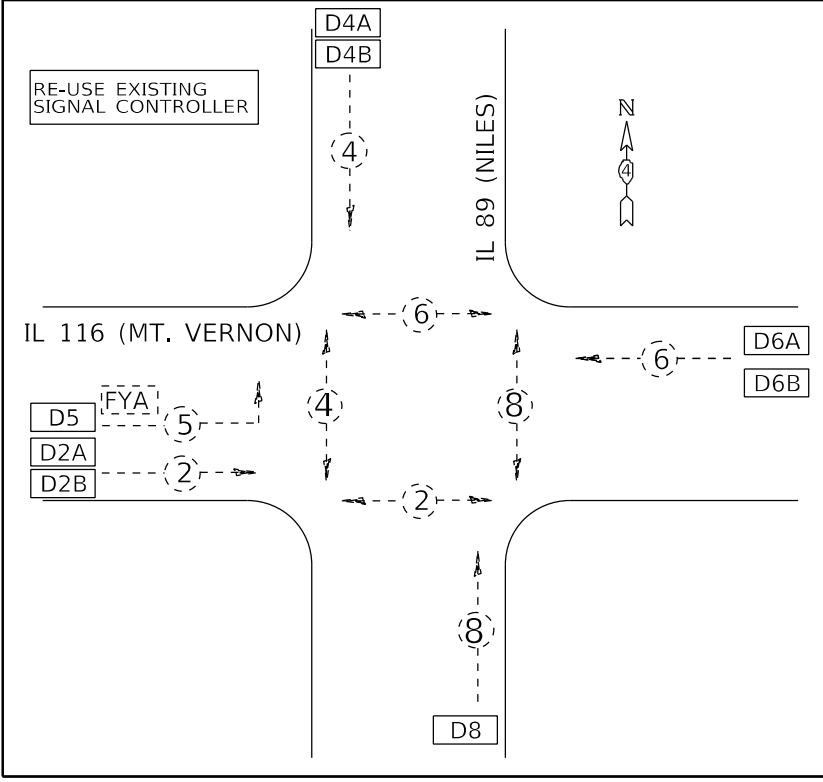
US 24 (CENTER) & IL 117 (MAIN) - EUREKA



IL 117 (MAIN) & LAKE - EUREKA



IL 116 (MT. VERNON) & IL 89 (NILES) - METAMORA



DETECTOR LEGEND  
 D##  
 ## INDICATES PHASE ASSIGNMENT

MODEL: D:\p\h\...  
 FILE NAME: S:\CEN\WV\ORD\ESP\AN\hanson\68H17 D4 ITS System 2023\68H17 D4 ITS System 2023.dgn

|                              |            |           |
|------------------------------|------------|-----------|
| USER NAME = hansonj          | DESIGNED - | REVISED - |
| PLOT SCALE = 23,8272 * / in. | DRAWN -    | REVISED - |
| PLOT DATE = 7/8/2022         | CHECKED -  | REVISED - |
|                              | DATE -     | REVISED - |

STATE OF ILLINOIS  
 DEPARTMENT OF TRANSPORTATION

|   |       |    |         |
|---|-------|----|---------|
| TRAFFIC SIGNAL PHASE DIAGRAMS - CONTINUED |       |    |         |
| SCALE:                                    | SHEET | OF | SHEETS  |
|   | STA.  |    | TO STA. |

|                           |                    |        |              |           |
|---------------------------|--------------------|--------|--------------|-----------|
| F.A. RTE.                 | SECTION            | COUNTY | TOTAL SHEETS | SHEET NO. |
| VAR.                      | D4 ITS SYSTEM 2023 | PEORIA | 11           | 11        |
| CONTRACT NO. 68H17        |                    |        |              |           |
| ILLINOIS FED. AID PROJECT |                    |        |              |           |

NOT TO SCALE