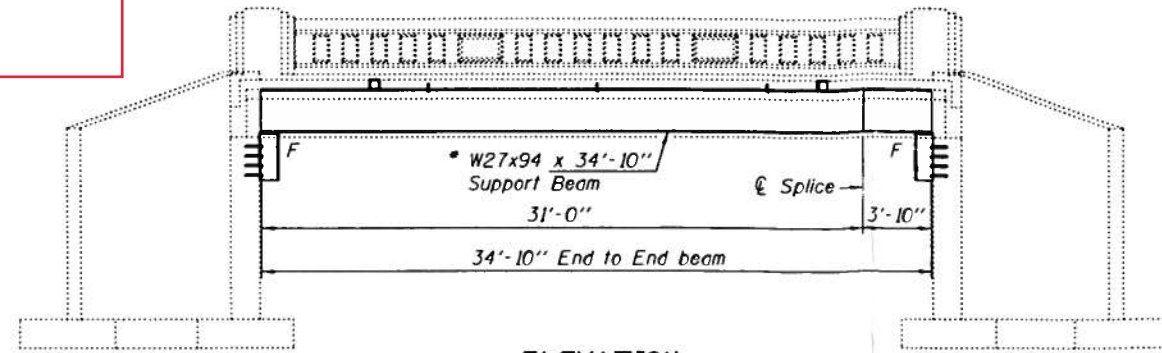
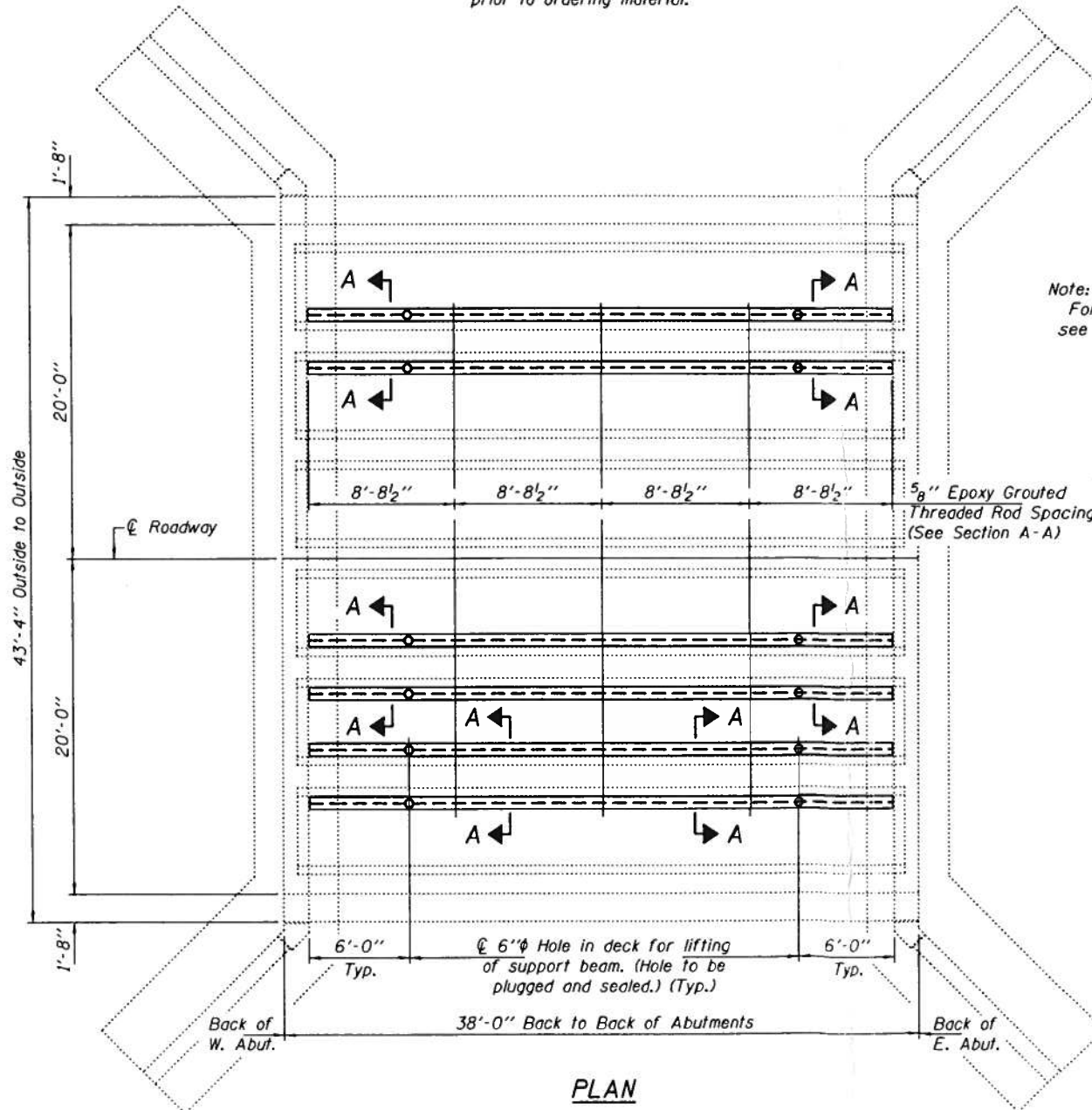


FOR INFORMATION ONLY



ELEVATION

* Contractor is to verify beam length prior to ordering material.



Note:
For Section A-A and splice details, see sheet 2 of 2.

5/8" Epoxy Grouted Threaded Rod Spacing (See Section A-A)

6'-0" Typ. 6" Hole in deck for lifting of support beam. (Hole to be plugged and sealed.) (Typ.) 6'-0" Typ.

38'-0" Back to Back of Abutments

PLAN

GENERAL NOTES

All structural steel shall conform to AASHTO Classification M-270 Gr. 36, unless otherwise noted.

Plan dimensions and details relative to existing plans are subject to nominal construction variations. The Contractor shall field verify existing dimensions and details affecting new construction and make necessary approved adjustments prior to construction or ordering of materials. Such variations shall not be cause for additional compensation for a change in scope of the work, however, the Contractor will be paid for the quantity actually furnished at the unit price bid for the work.

The contractor is advised that the existing T-Girders are in a deteriorated condition with reduced load carrying capacity. It is the contractor's responsibility to account for the condition of the beams when developing construction procedures.

See Section 584 of the Standard Specifications for Epoxy Grouting of Threaded Rods; Minimum embedment 9" unless otherwise noted.

The cost of epoxy grouting threaded rods on the abutments and deck shall be included with Furnishing and Erecting Structural Steel.

All structural steel shall be shop painted with the inorganic zinc rich primer per AASHTO M300, Type 1. Cost included with Furnishing & Erecting Structural Steel. Fasteners shall be high strength bolts. Bolts 3/4"φ, open holes 13/16"φ, unless otherwise noted.



Expires: November 30, 2018

DESIGNED: Victor H. Delig
CHECKED: [Signature]
DRAWN: Kyle M. Steffen
CHECKED: [Signature]

PASSED

[Signature]
ACTING ENGINEER OF BRIDGES AND STRUCTURES

DATE: AUGUST 26, 2016
REVISED
REVISED

STATE OF ILLINOIS
DEPARTMENT OF TRANSPORTATION

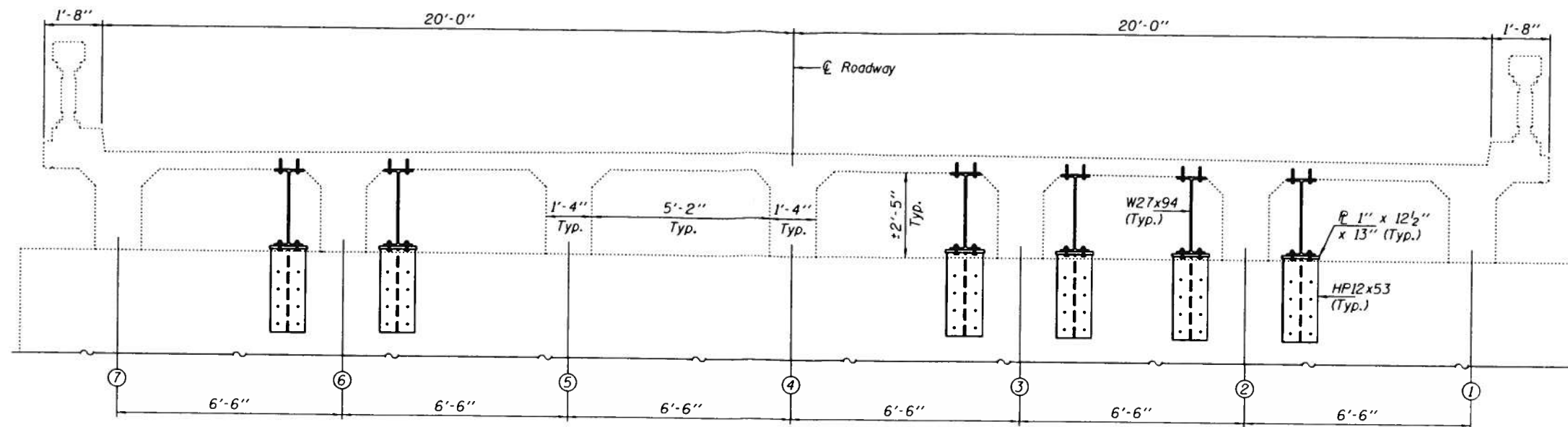
GENERAL PLAN & ELEVATION
ILLINOIS ROUTE 17 OVER DRAINAGE DITCH
SN 053-0029

SHEET NO. 1 OF 2 SHEETS

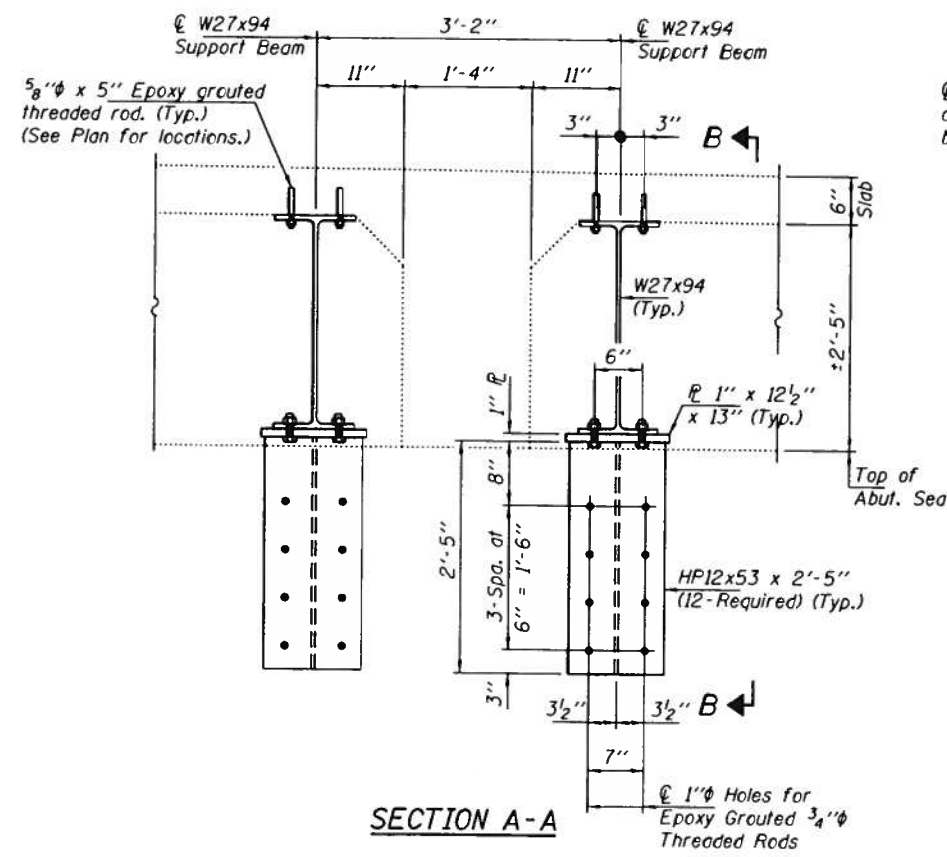
TOTAL BILL OF MATERIAL

ITEM	UNIT	QUANTITY
Furnishing & Erecting Structural Steel	Pound	22800

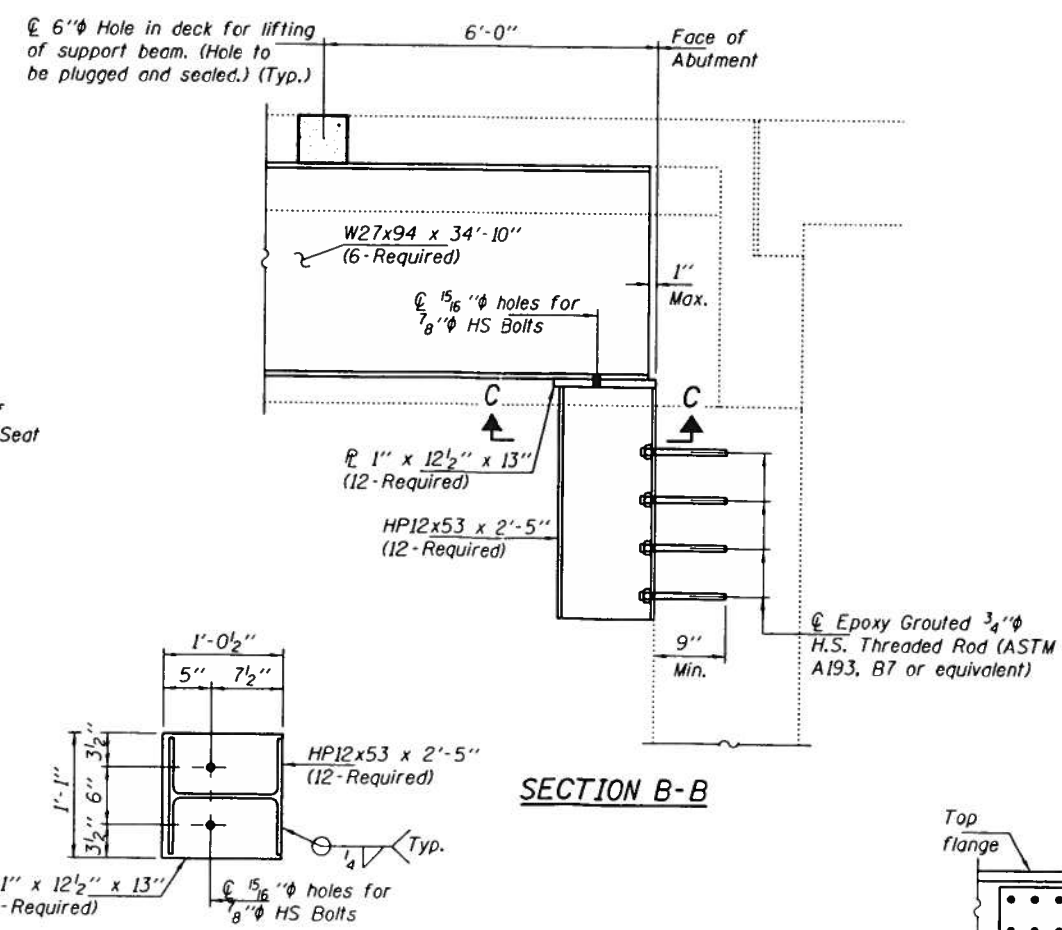
F.A.P. RTE.	SECTION	COUNTY	TOTAL SHEETS	SHEET NO.
649	-	LIVINGSTON	-	-
				CONTRACT NO.
ILLINOIS FED. AID PROJECT				



CROSS-SECTION
(Looking East)

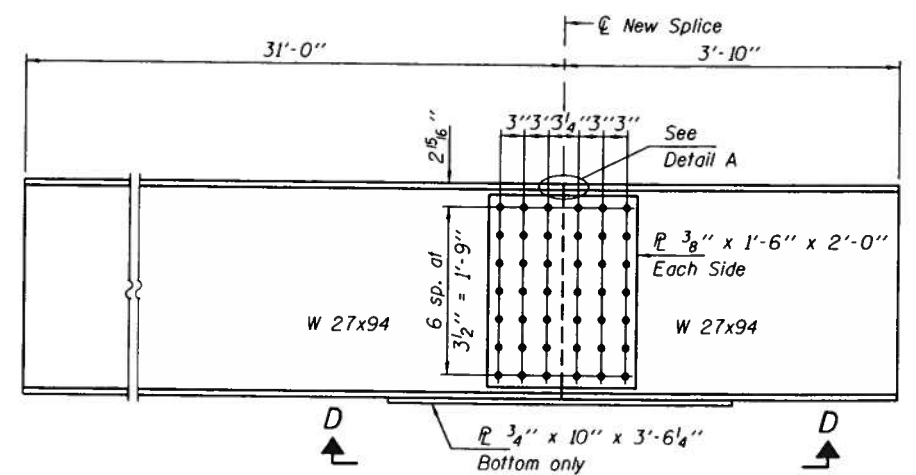


SECTION A-A

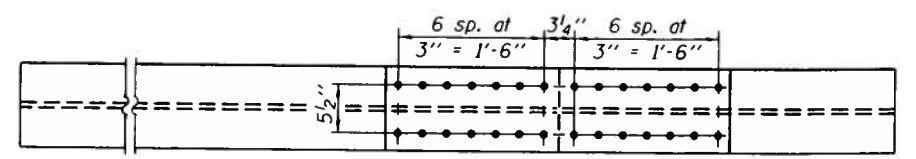


SECTION B-B

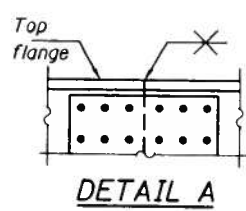
SECTION C-C



SPlice DETAIL




VIEW D-D



DETAIL A

FOR INFORMATION ONLY

DESIGNED - VHV	CHECKED - DAB	DRAWN - Kyle M. Steffen	CHECKED - VHV DAB
----------------	---------------	-------------------------	-------------------

PASSED	DATE - AUGUST 26, 2016	REVISED	REVISED
 ACTING ENGINEER OF BRIDGES AND STRUCTURES			

STATE OF ILLINOIS
DEPARTMENT OF TRANSPORTATION

T-GIRDER SUPPORT DETAILS
SN 053-0029
SHEET NO. 2 OF 2 SHEETS

F.A.P. RTE.	SECTION	COUNTY	TOTAL SHEETS	SHEET NO.
649	-	LIVINGSTON	-	-
CONTRACT NO.				