

SPECIAL PROVISION	SPECIALTY ITEM	CODE NO.	ITEM	UNIT	TOTAL QUANTITY (80% FEDERAL, 20% LOCAL)	CODE 0028	CODE 0042
	*	87301215	ELECTRIC CABLE IN CONDUIT, SIGNAL NO. 14 2C	FOOT	1358	1358	
	*	87301225	ELECTRIC CABLE IN CONDUIT, SIGNAL NO. 14 3C	FOOT	1408	1408	
		87301900	ELECTRIC CABLE IN CONDUIT, EQUIPMENT GROUNDING CONDUCTOR, NO. 6 1C	FOOT	162	162	
		87900200	DRILL EXISTING HANDHOLE	EACH	5	5	
		88102717	PEDESTRIAN SIGNAL HEAD, LED, 1-FACE, BRACKET MOUNTED WITH COUNTDOWN TIMER	EACH	4	4	
		88600100	DETECTOR LOOP, TYPE I	FOOT	42	42	
	*	K0012990	PERENNIAL PLANTS, ORNAMENTAL TYPE, GALLON POT	UNIT	0.64	0.64	
Δ	*	X0327880	WAYFINDING SIGN, SPECIAL	L SUM	1	1	
Δ	*	X1400367	PEDESTRIAN SIGNAL POST, 10 FT.	EACH	5	5	
Δ	*	X1400378	PEDESTRIAN SIGNAL POST, 5 FT.	EACH	1	1	
Δ		X4240430	PORTLAND CEMENT CONCRETE SIDEWALK 5 INCH, SPECIAL	SQ FT	2300	2300	
Δ	*	X2511630	EROSION CONTROL BLANKET (SPECIAL)	SQ YD	3000	3000	
Δ	*	X8760200	ACCESSIBLE PEDESTRIAN SIGNALS	EACH	8	8	
Δ	*	X8780012	CONCRETE FOUNDATION, TYPE A 12-INCH DIAMETER	FOOT	20	20	
Δ	*	X8950114	MODIFY EXISTING CONTROLLER AND CABINET	EACH	1	1	
Δ		Z0013797	STABILIZED CONSTRUCTION ENTRANCE	SQ YD	115	115	
Δ		Z0013798	CONSTRUCTION LAYOUT	L SUM	1	1	
Δ	*	Z0030850	TEMPORARY INFORMATION SIGNING	SQ FT	195	195	
Δ	*	Z0033044	RE-OPTIMIZE TRAFFIC SIGNAL SYSTEM LEVEL 1	EACH	1	1	
Δ		Z0076600	TRAINEES	HOUR	500		500
Δ		Z0076604	TRAINEES TRAINING PROGRAM GRADUATE	HOUR	500		500

1

* SPECIALTY ITEMS
Δ SPECIAL PROVISION

MODEL: D:\64bit\...
FILE NAME: I:\MILES\190072\Civil\SC04_190072.dwg

CB CHRISTOPHER B. BURKE ENGINEERING, LTD.
9575 W. Higgins Road, Suite 600
Rosemont, Illinois 60018
(847) 823-0500

USER NAME = doconnell	DESIGNED - DOC	REVISOR - Δ 9-8-2022
PLOT SCALE = 2"	CHECKED - LMF	REVISIONS
PLOT DATE = 9/8/2022	DATE - 8/18/2022	REVISIONS

**STATE OF ILLINOIS
DEPARTMENT OF TRANSPORTATION**

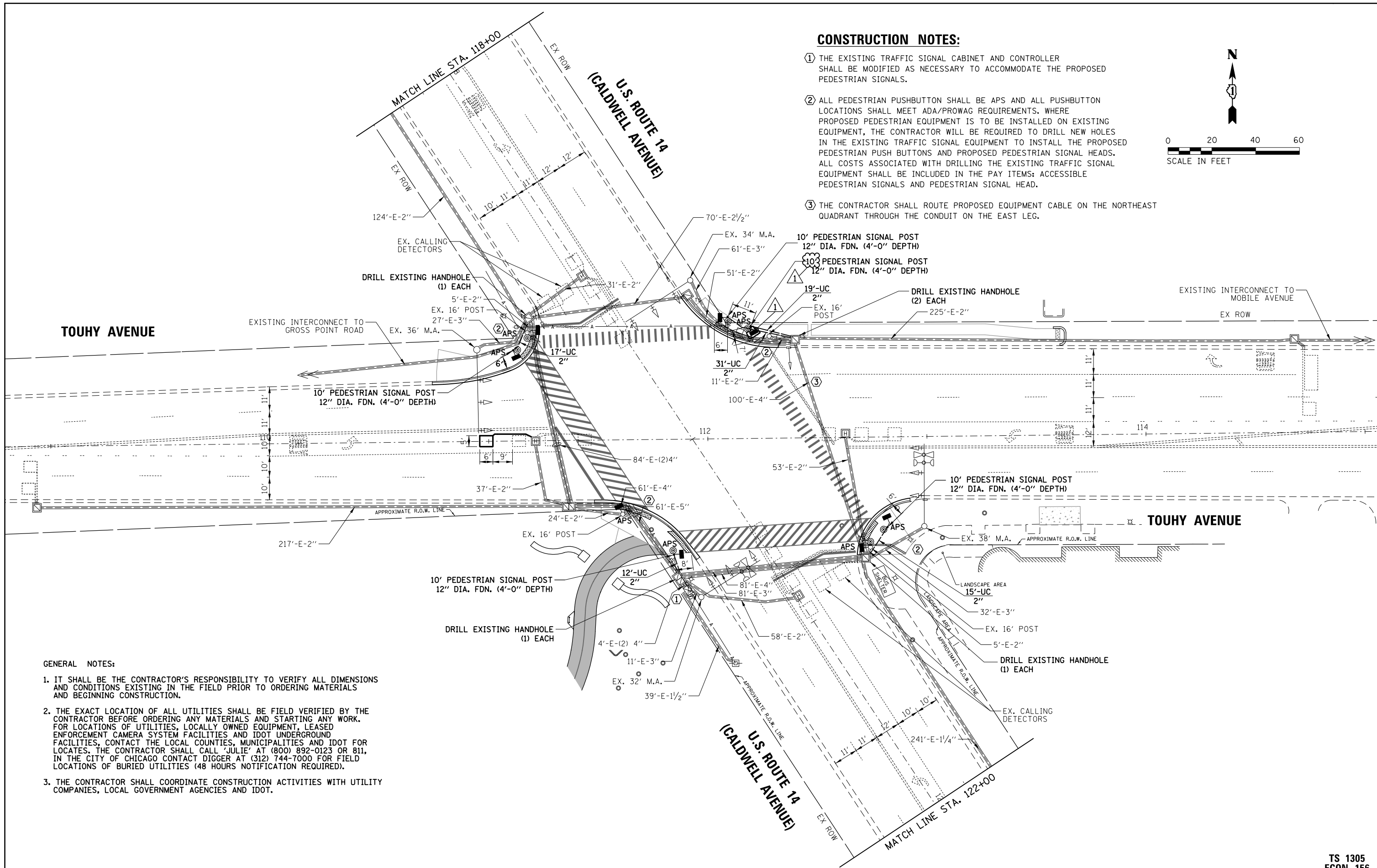
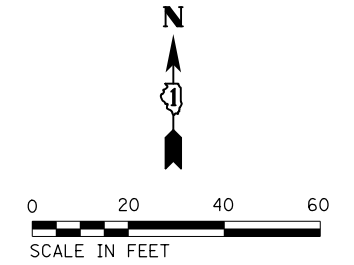
**NORTH BRANCH TRAIL CONNECTION
SUMMARY OF QUANTITIES**

F.A.P. RTE. 0375	SECTION 19-00135-00-BT	COUNTY COOK	TOTAL SHEETS 47	SHEET NO. 6
CONTRACT NO. 61H81			ILLINOIS FED. AID PROJECT	

SCALE: SHEET OF SHEETS STA. TO STA.

CONSTRUCTION NOTES:

- ① THE EXISTING TRAFFIC SIGNAL CABINET AND CONTROLLER SHALL BE MODIFIED AS NECESSARY TO ACCOMMODATE THE PROPOSED PEDESTRIAN SIGNALS.
- ② ALL PEDESTRIAN PUSHBUTTON SHALL BE APS AND ALL PUSHBUTTON LOCATIONS SHALL MEET ADA/PROWAG REQUIREMENTS. WHERE PROPOSED PEDESTRIAN EQUIPMENT IS TO BE INSTALLED ON EXISTING EQUIPMENT, THE CONTRACTOR WILL BE REQUIRED TO DRILL NEW HOLES IN THE EXISTING TRAFFIC SIGNAL EQUIPMENT TO INSTALL THE PROPOSED PEDESTRIAN PUSH BUTTONS AND PROPOSED PEDESTRIAN SIGNAL HEADS. ALL COSTS ASSOCIATED WITH DRILLING THE EXISTING TRAFFIC SIGNAL EQUIPMENT SHALL BE INCLUDED IN THE PAY ITEMS: ACCESSIBLE PEDESTRIAN SIGNALS AND PEDESTRIAN SIGNAL HEAD.
- ③ THE CONTRACTOR SHALL ROUTE PROPOSED EQUIPMENT CABLE ON THE NORTHEAST QUADRANT THROUGH THE CONDUIT ON THE EAST LEG.



GENERAL NOTES:

- 1. IT SHALL BE THE CONTRACTOR'S RESPONSIBILITY TO VERIFY ALL DIMENSIONS AND CONDITIONS EXISTING IN THE FIELD PRIOR TO ORDERING MATERIALS AND BEGINNING CONSTRUCTION.
- 2. THE EXACT LOCATION OF ALL UTILITIES SHALL BE FIELD VERIFIED BY THE CONTRACTOR BEFORE ORDERING ANY MATERIALS AND STARTING ANY WORK. FOR LOCATIONS OF UTILITIES, LOCALLY OWNED EQUIPMENT, LEASED ENFORCEMENT CAMERA SYSTEM FACILITIES AND IDOT UNDERGROUND FACILITIES, CONTACT THE LOCAL COUNTIES, MUNICIPALITIES AND IDOT FOR LOCATES. THE CONTRACTOR SHALL CALL 'JULIE' AT (800) 892-0123 OR 811, IN THE CITY OF CHICAGO CONTACT DIGGER AT (312) 744-7000 FOR FIELD LOCATIONS OF BURIED UTILITIES (48 HOURS NOTIFICATION REQUIRED).
- 3. THE CONTRACTOR SHALL COORDINATE CONSTRUCTION ACTIVITIES WITH UTILITY COMPANIES, LOCAL GOVERNMENT AGENCIES AND IDOT.

TS 1305
ECON 156

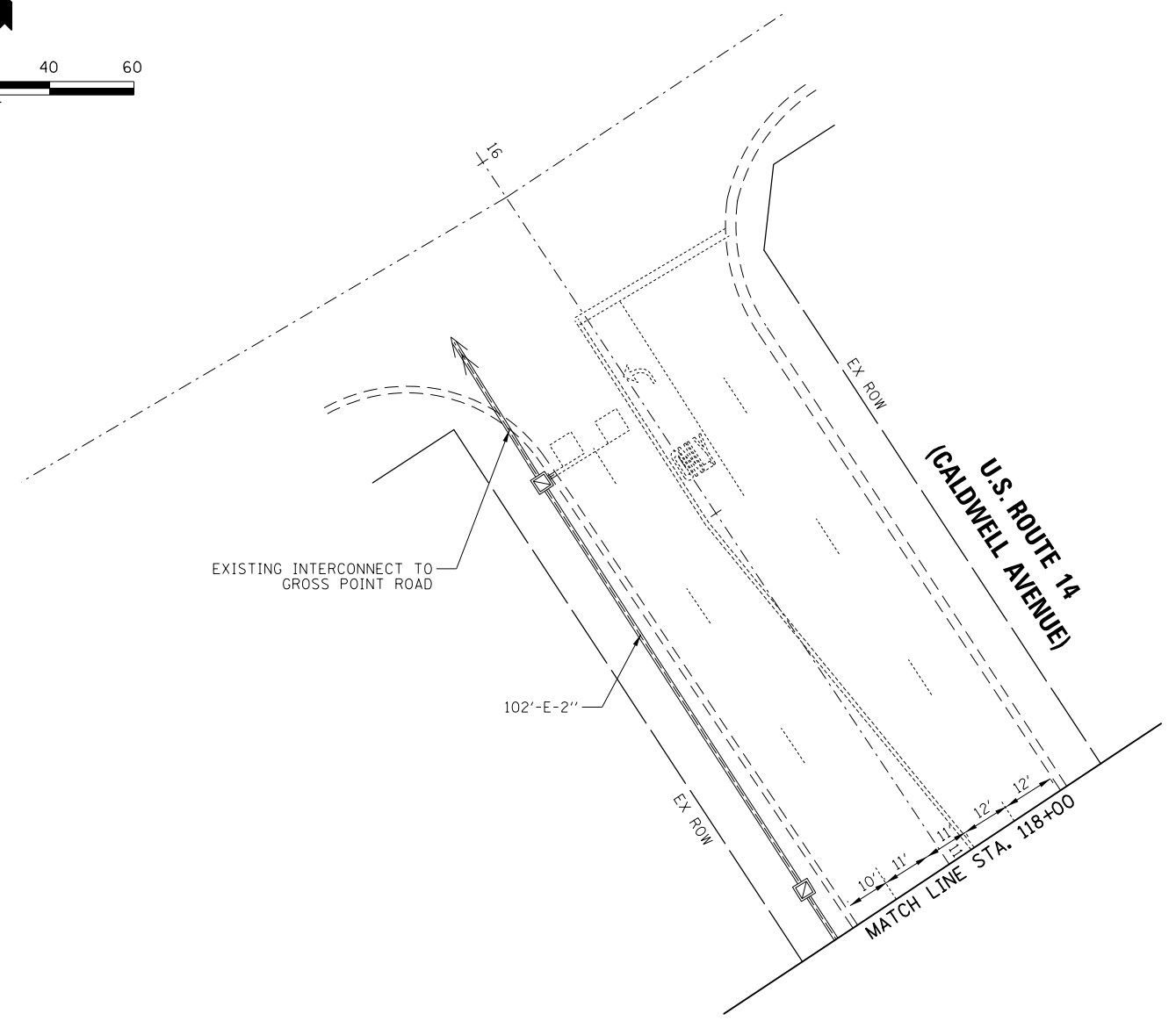
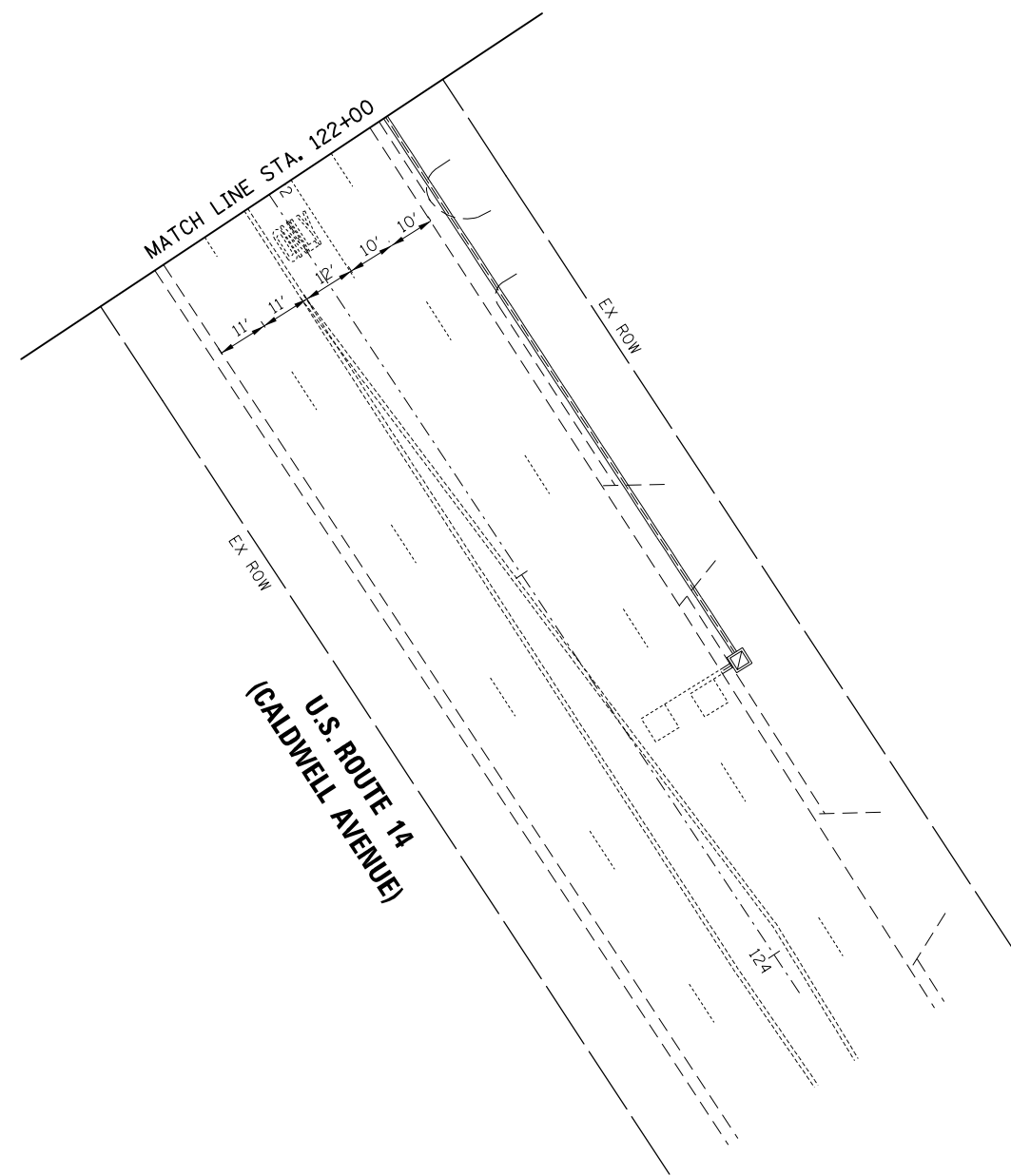
FILE NAME =	USER NAME = bgunnells	DESIGNED - BG	REVISED - 9-1-22
N:\NILES\190072\Traffic\MOD1.Touhy-Caldwell.dgn		DRAWN - BG	REVISED -
default		CHECKED - GMZ	REVISED -
	PLOT DATE = 9/1/2022	DATE - 9-1-22	REVISED -

STATE OF ILLINOIS
DEPARTMENT OF TRANSPORTATION

TRAFFIC SIGNAL MODIFICATION PLAN
(SHEET 1 OF 2)
TOUHY AVENUE AT U.S. ROUTE 14 (CALDWELL AVENUE)

SCALE: SHEET OF SHEETS STA. TO STA.

F.A. RTE.	SECTION	COUNTY	TOTAL SHEETS	SHEET NO.
0375	19-00135-00-BT	COOK	45	32
			CONTRACT NO. 61H81	
ILLINOIS FED. AID PROJECT				



TS 1305
ECON 156

FILE NAME =	USER NAME = bgunnells	DESIGNED - BG	REVISED - 9-1-2022
N:\NILES\190072\Traffic\MOD2.Touhy-Caldwell.dgn		DRAWN - BG	REVISED -
default	PLOT SCALE = 48"	CHECKED - GMZ	REVISED -
	PLOT DATE = 9/1/2022	DATE - 9-1-2022	REVISED -

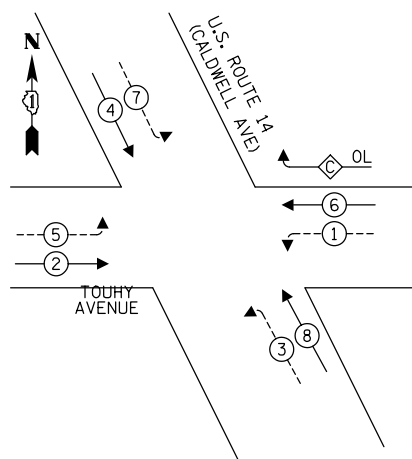
**STATE OF ILLINOIS
DEPARTMENT OF TRANSPORTATION**

**TRAFFIC SIGNAL MODIFICATION PLAN
(SHEET 2 OF 2)
TOUHY AVENUE AT U.S. ROUTE 14 (CALDWELL AVENUE)**

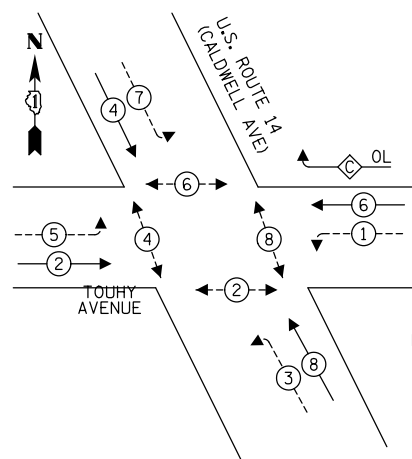
F.A. RTE.	SECTION	COUNTY	TOTAL SHEETS	SHEET NO.
0375	19-00135-00-BT	COOK	47	33
				CONTRACT NO. 61H81
ILLINOIS FED. AID PROJECT				

SCALE:	SHEET	OF	SHEETS	STA.	TO	STA.
--------	-------	----	--------	------	----	------

EXISTING CONTROLLER SEQUENCE



PROPOSED CONTROLLER SEQUENCE

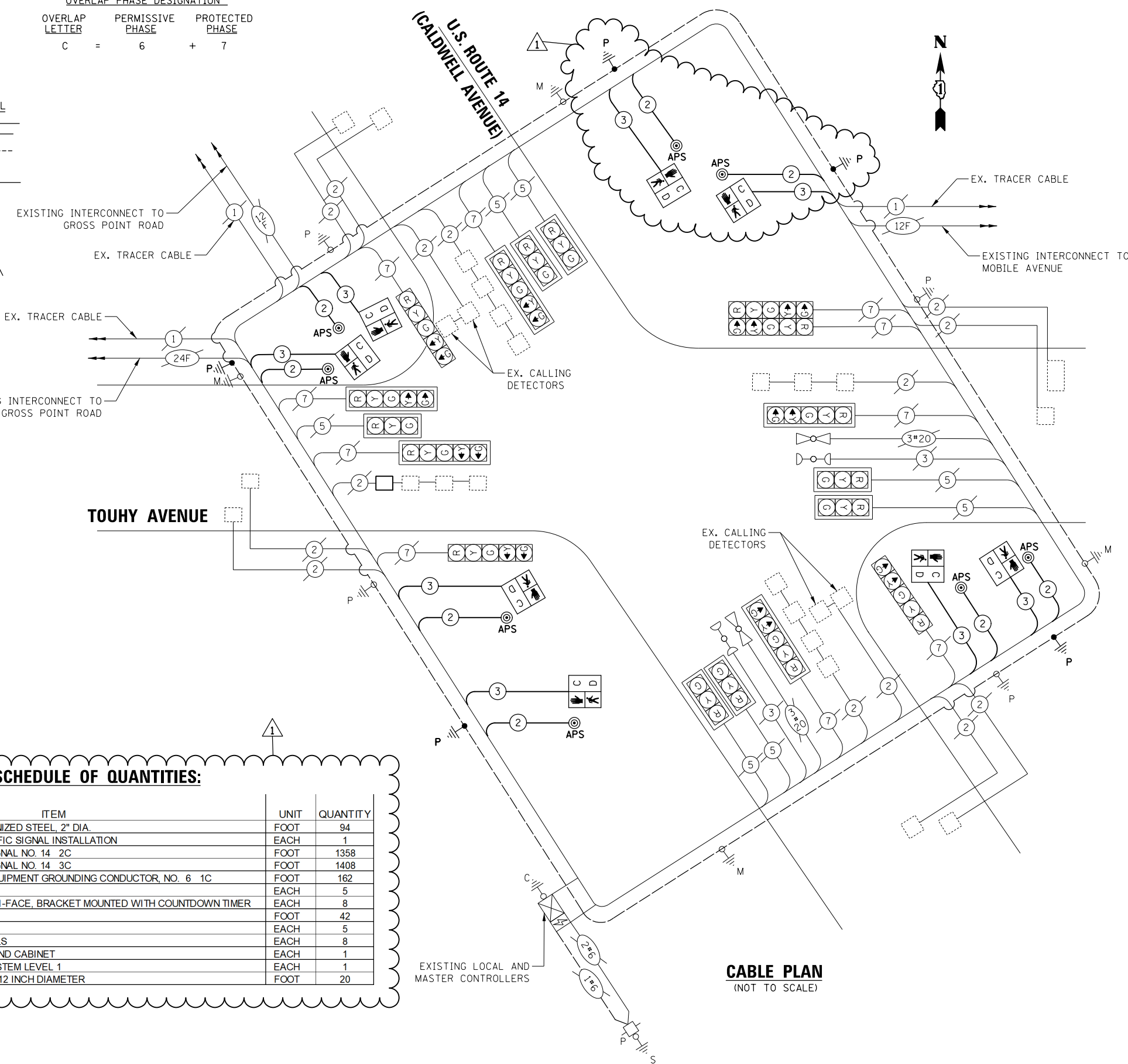
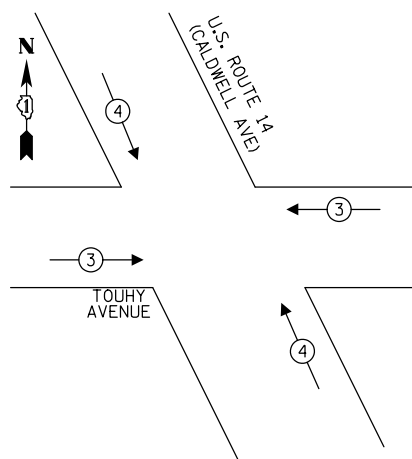


RIGHT TURN
OVERLAP PHASE DESIGNATION
OVERLAP LETTER PERMISSIVE PHASE PROTECTED PHASE
C = 6 + 7

LEGEND:

- ← ⊛ → PROTECTED PHASE
- ← ⊛ ⊛ → PROTECTED/PERMITTED PHASE
- ← ⊛ ⊛ ⊛ → PEDESTRIAN PHASE
- ← ⊛ ⊛ ⊛ → OL OVERLAP

EXISTING EMERGENCY VEHICLE PREEMPTION SEQUENCE



TRAFFIC SIGNAL ELECTRICAL SERVICE REQUIREMENTS

TYPE	NO. OF LAMPS	LED WATTAGE	% OPERATION	TOTAL WATTAGE
SIGNAL (RED)	17	11	50	93.5
(YELLOW)	17	20	5	17.0
(GREEN)	17	12	45	91.8
PERMISSIVE ARROW	20	10	10	20.0
PED. SIGNAL	8	20	100	160.0
CONTROLLER	2	100	100	200.0
UPS	1	25	100	25.0
VIDEO SYSTEM	-	150	100	-
BLANK-OUT SIGN	-	25	5	-
FLASHER	-	-	50	-
STREET NAME SIGN	-	120	50	-
LUMINAIRE	-	-	-	-
TOTAL =				607.3

ENERGY COSTS TO:
ILLINOIS DEPARTMENT OF TRANSPORTATION
201 W CENTER CT
SCHAUMBURG, IL 60196
ENERGY SUPPLY: CONTACT: TERRI BLECK
PHONE: (847)816-5239
COMPANY: COMMONWEALTH EDISON
ACCOUNT NUMBER: ---

SCHEDULE OF QUANTITIES:

ITEM	UNIT	QUANTITY
UNDERGROUND CONDUIT, GALVANIZED STEEL, 2" DIA.	FOOT	94
MAINTENANCE OF EXISTING TRAFFIC SIGNAL INSTALLATION	EACH	1
ELECTRIC CABLE IN CONDUIT, SIGNAL NO. 14 2C	FOOT	1358
ELECTRIC CABLE IN CONDUIT, SIGNAL NO. 14 3C	FOOT	1408
ELECTRIC CABLE IN CONDUIT, EQUIPMENT GROUNDING CONDUCTOR, NO. 6 1C	FOOT	162
DRILL EXISTING HANDHOLE	EACH	5
PEDESTRIAN SIGNAL HEAD, LED, 1-FACE, BRACKET MOUNTED WITH COUNTDOWN TIMER	EACH	8
DETECTOR LOOP, TYPE I	FOOT	42
PEDESTRIAN SIGNAL POST, 10 FT.	EACH	5
ACCESSIBLE PEDESTRIAN SIGNALS	EACH	8
MODIFY EXISTING CONTROLLER AND CABINET	EACH	1
RE-OPTIMIZE TRAFFIC SIGNAL SYSTEM LEVEL 1	EACH	1
CONCRETE FOUNDATION, TYPE A 12 INCH DIAMETER	FOOT	20

CABLE PLAN
(NOT TO SCALE)

FILE NAME = USER NAME = bgunnells
N:\NILES\190072\Traffic\CAB.Touhy-Caldwell.dgn
DRAWN - BG
DESIGNED - BG
CHECKED - GMZ
DATE - 9-1-2022
PLOT SCALE = 48"
PLOT DATE = 9/1/2022

DESIGNED - BG
DRAWN - BG
CHECKED - GMZ
DATE - 9-1-2022
REVISED - 9-1-2022
REVISED -
REVISED -
REVISED -

STATE OF ILLINOIS
DEPARTMENT OF TRANSPORTATION

CABLE PLAN, PHASE DESIGNATION DIAGRAM, EMERGENCY VEHICLE
PREEMPTION SEQUENCE AND SCHEDULE OF QUANTITIES
TOUHY AVENUE AT U.S. ROUTE 14 (CALDWELL AVENUE)

F.A. RTE.	SECTION	COUNTY	TOTAL SHEETS	SHEET NO.
0375	19-00135-00-BT	COOK	47	34
CONTRACT NO. 61H81				
ILLINOIS FED. AID PROJECT				

TS 1305
ECON 156