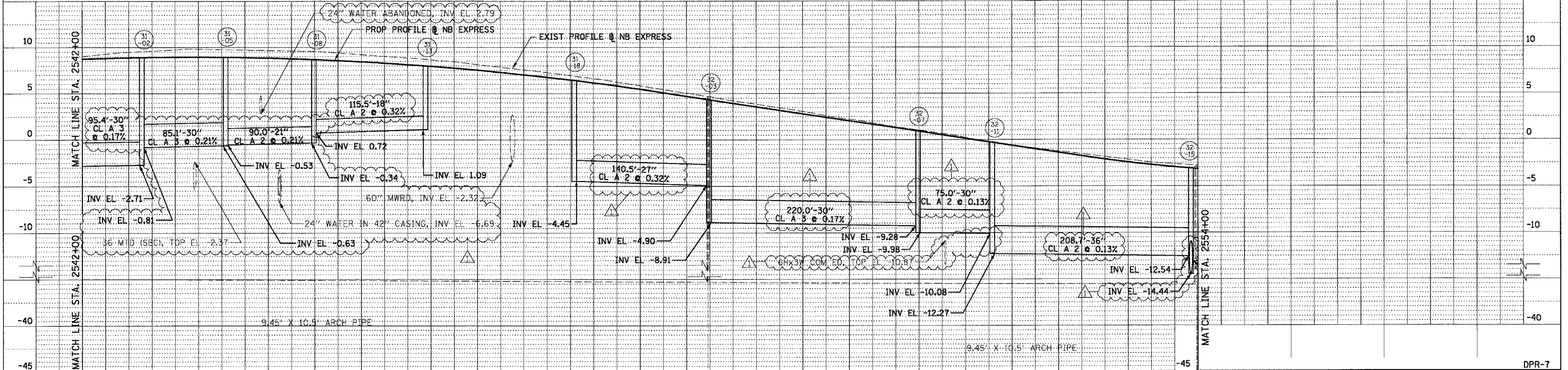
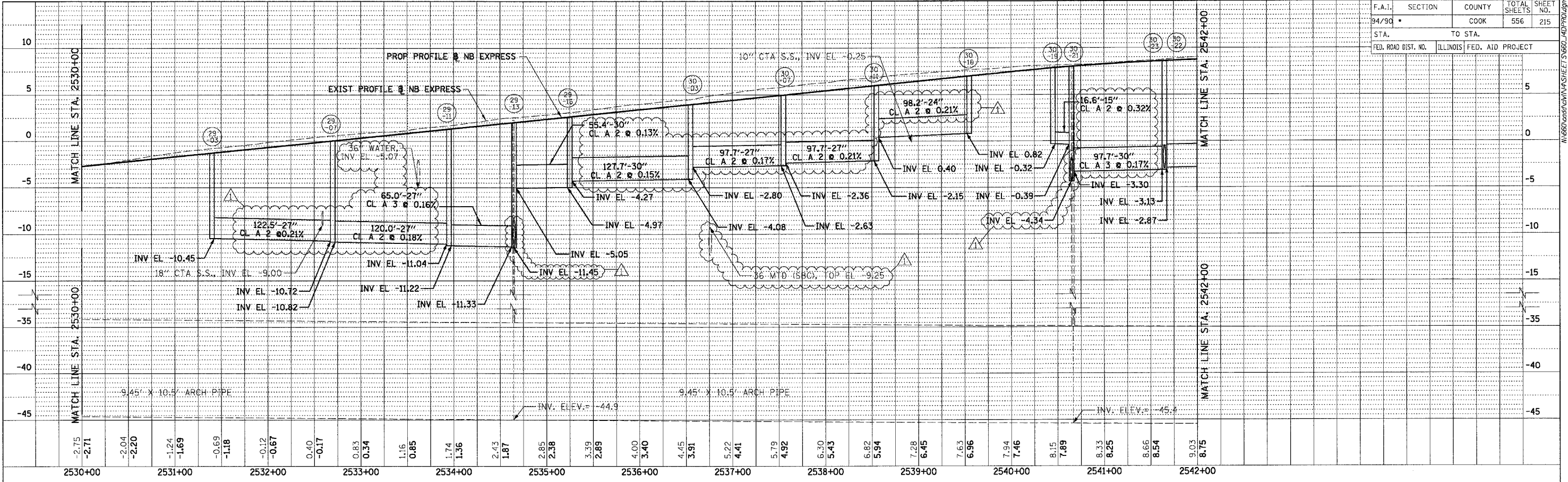


F.A.I.	SECTION	COUNTY	TOTAL SHEETS	SHEET NO.
94/90		COOK	556	215
STA.		TO STA.		
FED. ROAD DIST. NO.		ILLINOIS FED. AID PROJECT		

PLAN	REVISIONS	DATE
NO. 1	BY	
NO. 2	BY	
NO. 3	BY	
NO. 4	BY	
NO. 5	BY	

PLAN	REVISIONS	DATE
NO. 1	BY	
NO. 2	BY	
NO. 3	BY	
NO. 4	BY	
NO. 5	BY	



9.03	8.75	9.48	8.88	9.74	8.95	9.76	8.93	9.67	8.84	9.58	8.68	9.21	8.44	8.86	8.13	8.46	7.75	7.85	7.28	7.27	6.75	6.62	6.14	5.83	5.45	5.05	4.70	4.22	3.94	3.46	3.18	2.59	2.42	1.79	1.66	1.01	0.90	0.23	0.14	-0.61	-0.61	-1.23	-1.37	-1.84	-2.11	-2.46	-2.71										
2542+00		2543+00		2544+00		2545+00		2546+00		2547+00		2548+00		2549+00		2550+00		2551+00		2552+00		2553+00		2554+00		2555+00		2556+00		2557+00		2558+00		2559+00		2560+00		2561+00		2562+00		2563+00		2564+00		2565+00		2566+00		2567+00		2568+00		2569+00		2570+00	

REVISIONS	
NAME	DATE
ADDENDUM 1	8/12/05

ILLINOIS DEPARTMENT OF TRANSPORTATION
 F.A.I. 94/90 (DAN RYAN EXPRESSWAY)
 31ST STREET TO 71ST STREET
 NB EXPRESS LANE RECONSTRUCTION
 PROPOSED DRAINAGE PROFILE
 NORTHBOUND STA. 2530+00 TO STA. 2554+00

SCALE: 1"=25' VERT
 1"=50' HORIZ
 DATE: 07/07/05

DRAWN BY: JAM
 CHECKED BY: DDM

BOWMAN, BARRETT & ASSOCIATES INC.
 CONSULTING ENGINEERS
 Chicago, Illinois
 312.228.0190
 www.bbainc.com

08/17/2005 10:03:59 AM
 I:\62300\94\90\NORTHBOUND\ASHELETS\666L_ADR\PROJ.DWG