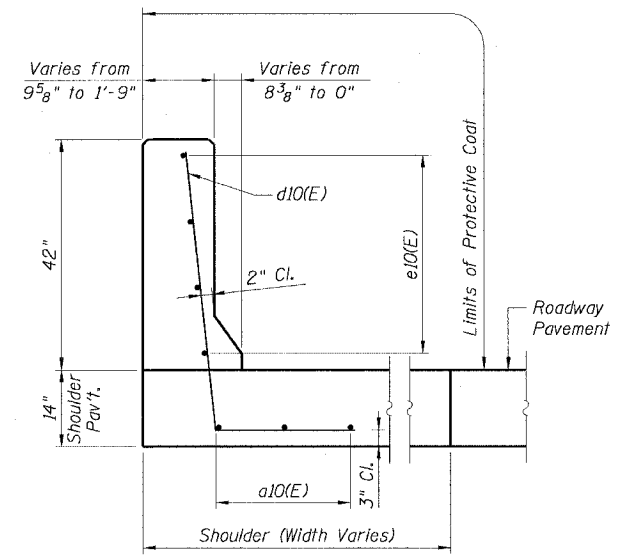
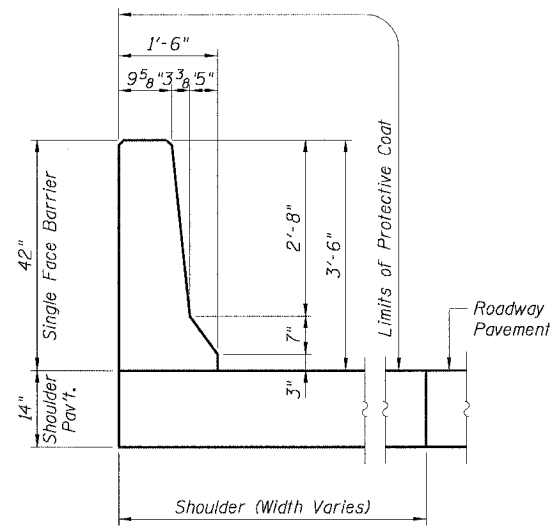
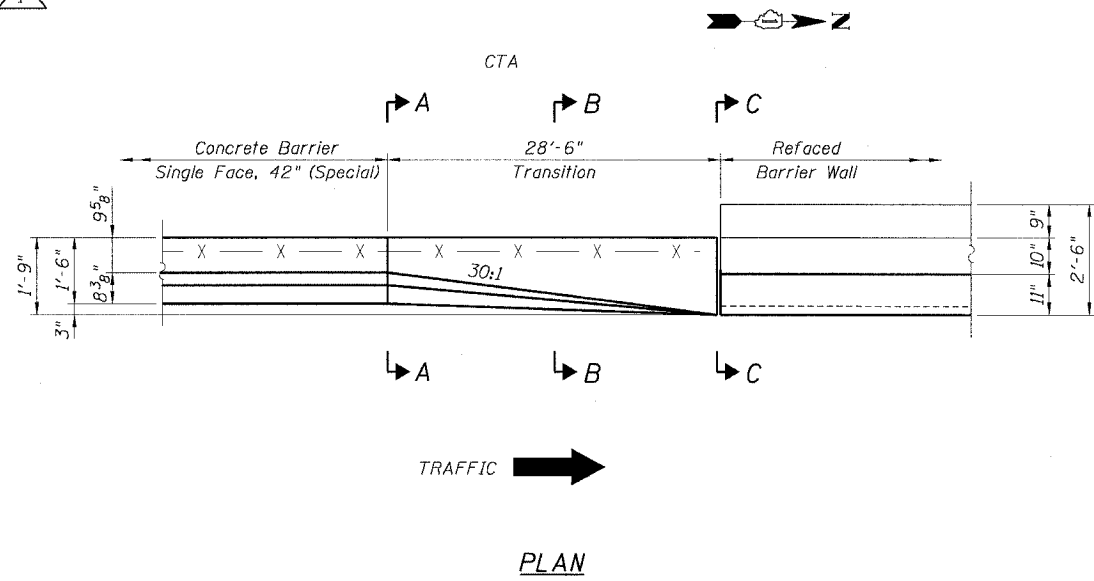


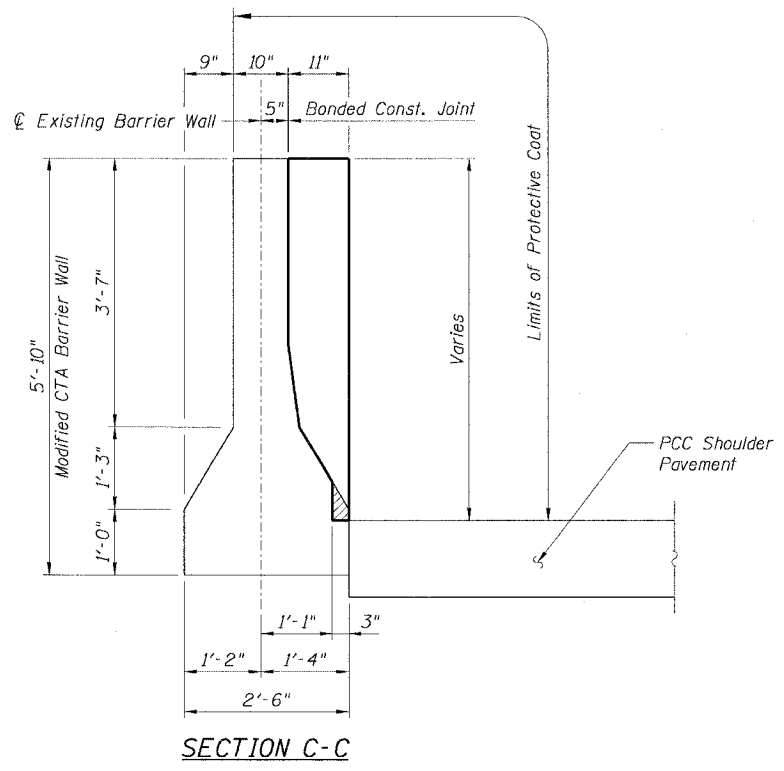
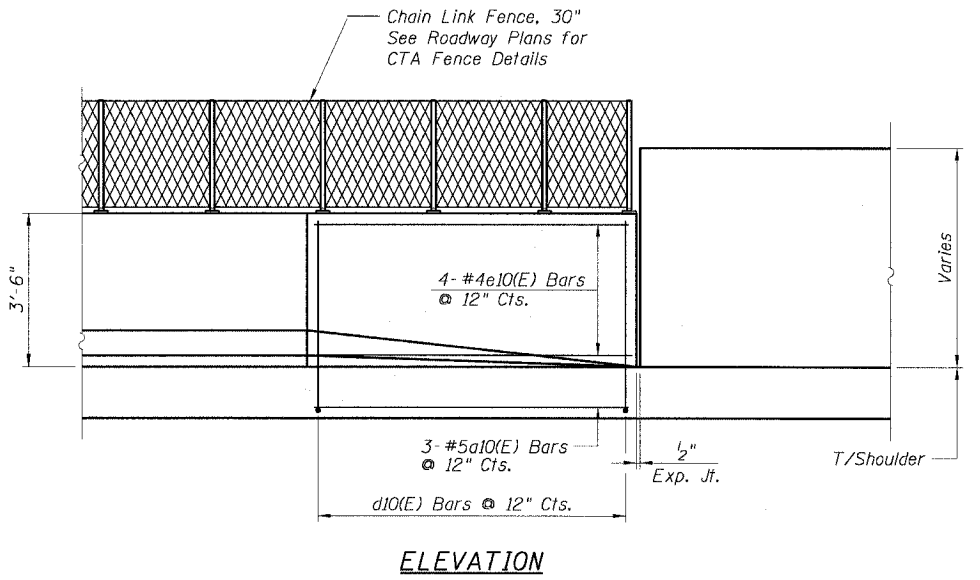
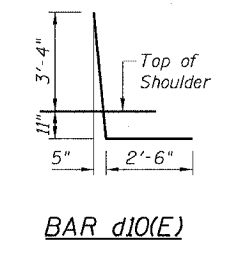
STATE OF ILLINOIS
DEPARTMENT OF TRANSPORTATION

F.A.I. RTE.	SECTION	COUNTY	TOTAL SHEETS	SHEET NO.
90/94		COOK	556	380
STA.	TO STA.			
FED. ROAD DIST. NO. 1	ILLINOIS	FED. AID PROJECT		
(1818, ETC, 2324.6-1PIR-B			62300	



BILL OF MATERIAL FOR ONE TRANSITION

Bar	No.	Size	Length	Shape
a10	3	#5	28'-2"	—
d10	29	#6	6'-9"	L
e10	4	#4	28'-2"	—
Item			Unit	Quantity
Reinforcement Bars, Epoxy Coated			Pound	457
Concrete Superstructure			Cu. Yd.	5.2
Protective Coat			Sq. Yd.	15



- NOTES:**
- For alternative vertical reinforcing details, see "Concrete Barrier Single Face, 42" Alternates".
 - For existing CTA Barrier modifications - vertical facing, see sheet B7.
 - For Expansion Joint details see Sheet B6.
 - For locations of Transition, see Roadway Plans.

CTE | AECOM

REVISIONS	
NAME	DATE
MJP	8-12-05

ILLINOIS DEPARTMENT OF TRANSPORTATION
F.A.I. 90/94 (DAN RYAN EXPRESSWAY)
71ST STREET TO 31ST STREET (NB EXPRESS LANES)
EXISTING BARRIER WALL MODIFICATIONS
AT CTA STATIONS
PROPOSED T/SOULDER AT OR ABOVE EXISTING
NEW 42" BARRIER TO VERT. REFACED BARRIER
TRANSITION DETAILS (TAPER)
SCALE: None DRAWN BY: CHD
DATE: July 7, 2005 CHECKED BY: RDP