

FOR INDEX OF SHEETS SEE SHEET NO. 2
 DESIGN NUMBER: D-91-417-01 31st to 47th
 D-91-419-01 47th to 71st

STATE OF ILLINOIS
 DEPARTMENT OF TRANSPORTATION
 DIVISION OF HIGHWAYS

62300

F.A.I.	SECTION	COUNTY	TOTAL SHEETS	SHEET NO.
94	*	COOK	559	1

(1818, ETC, 2324.6-1P)R-8



SIGNED *Phillip J. Mino*
 DATE *July 7, 2005*
 EXPIRES *November 30, 2005*

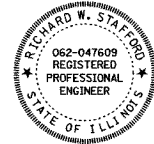
FOR ALL OTHER EDWARDS AND KELCEY SHEETS



SIGNED *Douglas C. Knuth*
 DATE *July 7, 2005*
 EXPIRES *Nov. 30, 2006*



SIGNED *John A. Lukowski*
 DATE *July 7, 2005*
 EXPIRES *November 30, 2005*

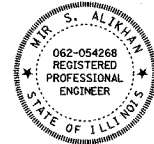


SIGNED *Richard W. Stafford*
 DATE *July 7, 2005*
 EXPIRES *November 30, 2005*

FOR ALL OTHER BOWMAN, BARRETT SHEETS



SIGNED *Brian L. Umbreit*
 DATE *JULY 7, 2005*
 EXPIRES *NOV. 30, 2006*



SIGNED *Mir S. Alkhatib*
 DATE *JULY 7, 2005*
 EXPIRES *NOVEMBER, 30, 2005*

FOR ALL KAM ENGINEERING SHEETS.

**PROPOSED
 HIGHWAY PLANS**
**F.A.I. ROUTE 94/90 (DAN RYAN EXPRESSWAY)
 (I-94/90-NB)**
**31ST STREET TO 71ST STREET (NB EXPRESS LANES)
 ROADWAY RECONSTRUCTION**

SECTION (1818, ETC, 2324.6-1P)R-8
 PROJECT: IM-094-3(397)055
 COOK COUNTY
 C-91-417-01



LOCATION OF SECTION INDICATED THUS: - ■ -

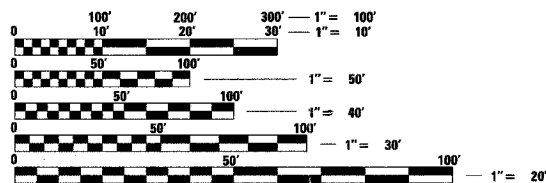
PROJECT LOCATED IN THE CITY OF CHICAGO

DESIGN DESIGNATION

DAN RYAN EXPRESSWAY 15,309 (35) ARTERIAL (PCC 30)

TRAFFIC VOLUMES AND SPEEDS

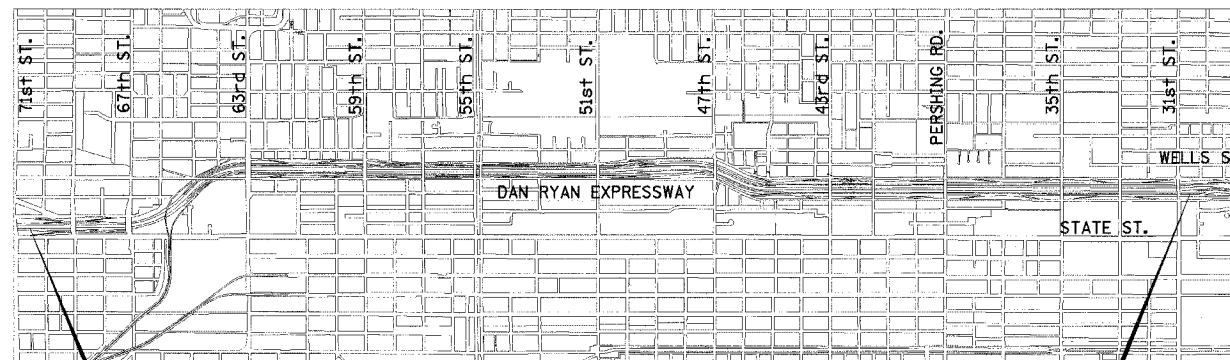
	ADT	DESIGN SPEED	POSTED SPEED
NB EXPRESS	113,390	60	50



FULL SIZE PLANS HAVE BEEN PREPARED USING STANDARD ENGINEERING SCALES. REDUCED SIZED PLANS WILL NOT CONFORM TO STANDARD SCALES. IN MAKING MEASUREMENTS ON REDUCED PLANS, THE ABOVE SCALES MAY BE USED.

FOR UTILITY LOCATION INFORMATION FOR EXCAVATION CALL CHICAGO UTILITY ALERT NETWORK (C.U.A.N.) 312-744-7000.

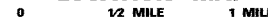
CONTRACT 62300



PROJECT BEGINS
 STA. 2367+00
 NB I-94 EXPRESS LANES

PROJECT ENDS
 STA. 2637+49
 NB I-94 EXPRESS LANES

LOCATION MAP



NET LENGTH OF IMPROVEMENT 27,050 ft. = 5.123 mi.
 GROSS LENGTH OF IMPROVEMENT 27,050 ft. = 5.123 mi.

Dan Ryan Contract 14

STATE OF ILLINOIS
 DEPARTMENT OF TRANSPORTATION
 DIVISION OF HIGHWAYS

SUBMITTED *June 1, 2005*
Dina O'Keefe/AP
 DEPUTY DIRECTOR OF HIGHWAYS, REGION ENGINEER

20

ENGINEER OF DESIGN AND ENVIRONMENT

20

DIRECTOR OF HIGHWAYS, CHIEF ENGINEER

Edwards AND Kelcey

BOWMAN, BARRETT & ASSOCIATES
 SUITE 2650
 130 E. RANDOLPH ST.
 CHICAGO, IL 60601

ONE NORTH FRANKLIN
 SUITE 500
 CHICAGO, IL 60606

**PRINTED BY THE AUTHORITY
 OF THE STATE OF ILLINOIS**

1001 Project Manager: R. Shah (847) 705-4437 (District 1)