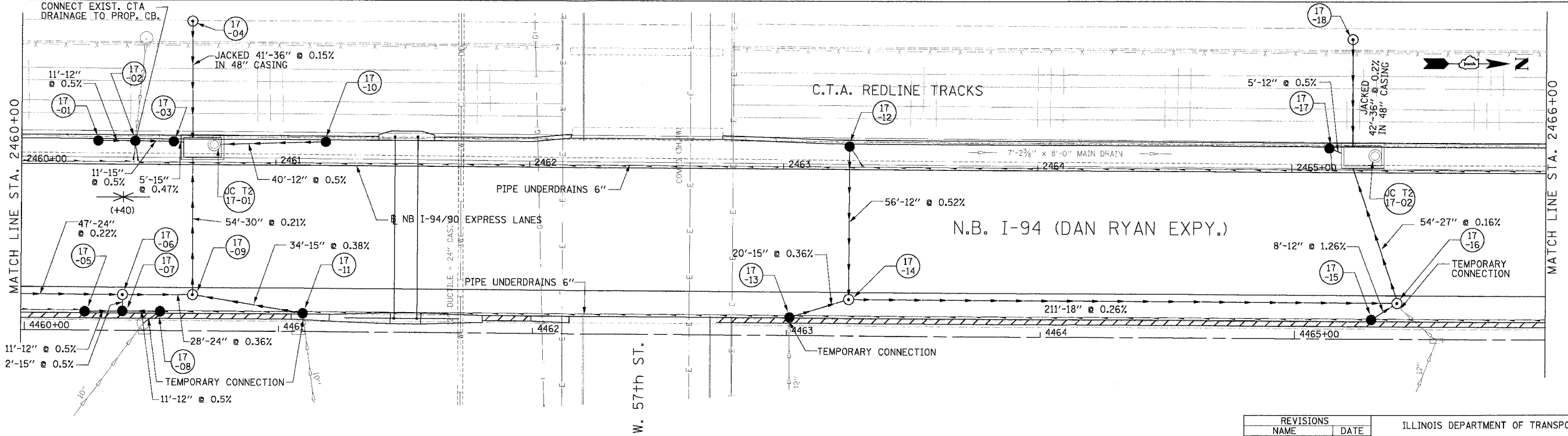


**NOTE:**  
 1. THE LOCATION OF DRAINAGE STRUCTURES AND PIPES CONSTRUCTED IN PREVIOUS CONTRACTS IS BASED OFF OF CONTRACT PLAN DRAWINGS. THE CONTRACTOR MUST VERIFY LIMITS OF PREVIOUS CONSTRUCTION IN THE FIELD.

EXISTING CONDITIONS AND REMOVALS



REVISIONS	
NAME	DATE

ILLINOIS DEPARTMENT OF TRANSPORTATION  
 F.A.I. 94/90 (DAN RYAN EXPRESSWAY)  
 31ST STREET TO 71ST STREET  
 NB EXPRESS LANE RECONSTRUCTION

DRAINAGE AND UTILITIES PLAN  
 NORTHBOUND STA. 2460+00 TO STA. 2466+00

SCALE: 1"=20'  
 DATE: 1/7/05

DRAWN BY: LPN  
 CHECKED BY: PJM

**Edwards AND Kelcey**  
 ONE NORTH FRANKLIN  
 CHICAGO, IL 60606  
 PHONE: (312) 251-3000  
 FAX: (312) 251-3015  
 WEB: WWW.EDKCORP.COM

DU-17  
 06/21/2005 09:40:40 PM