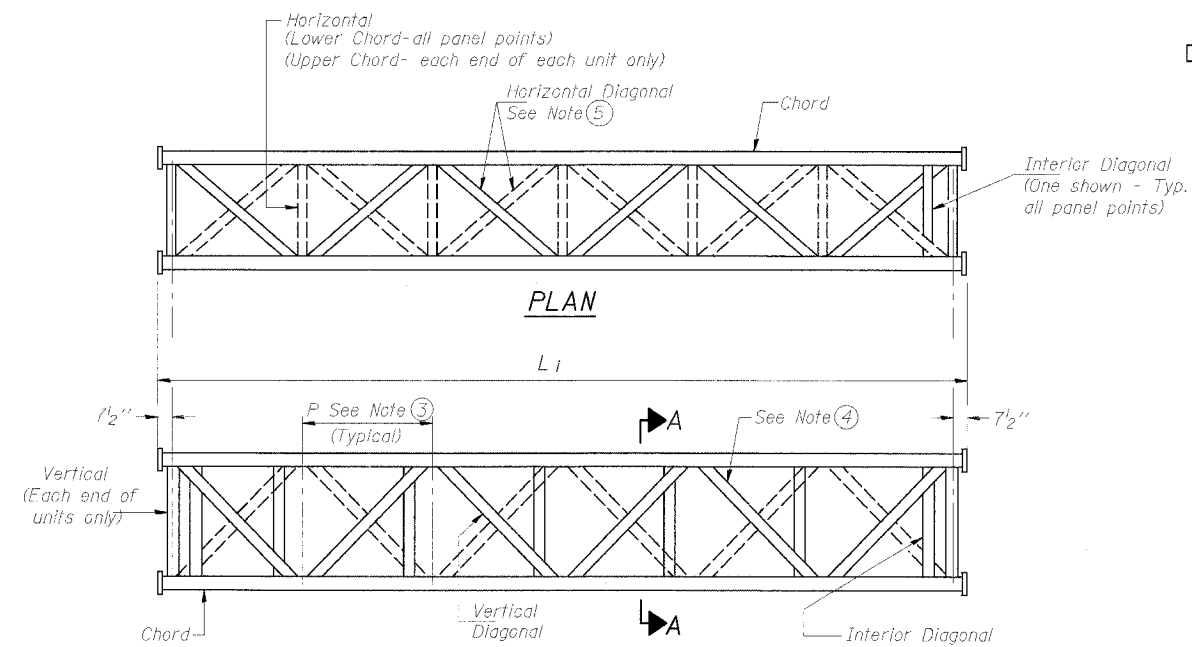


STATE OF ILLINOIS
DEPARTMENT OF TRANSPORTATION

PLAN NO.	SECTION	COUNTY	SHEET	SHEET NO.
90/94	*	COOK	556	309
FED. ROAD DIST. NO. 7		ILLINOIS	FED. AID PROJECT	

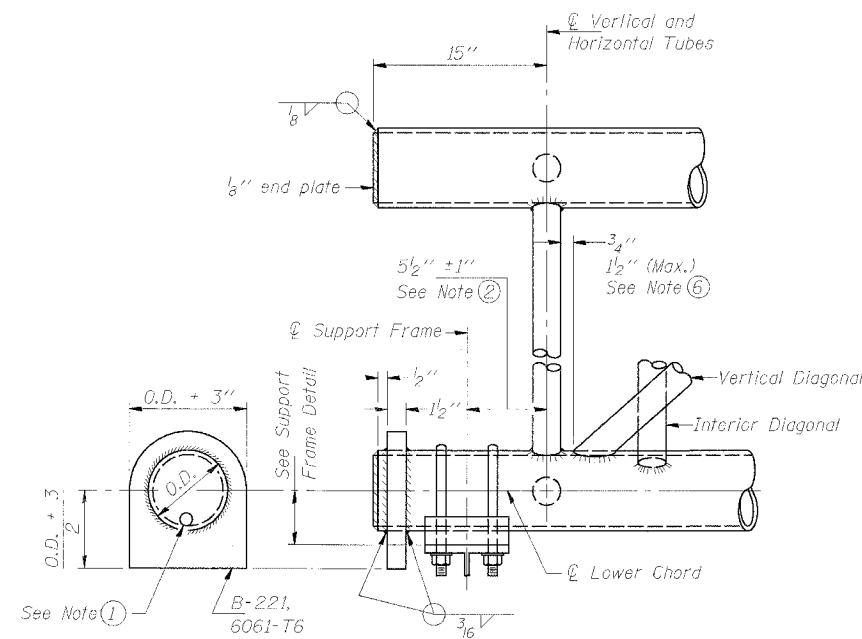
* (1818, ETC, 2324.6-1P) R-8

62300

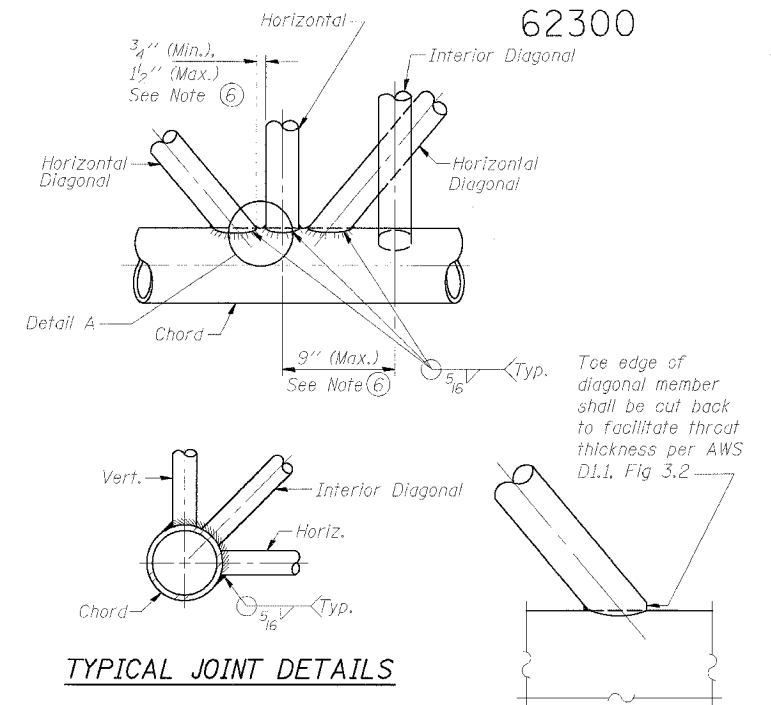


**ELEVATION
TYPICAL INTERIOR UNIT**

Even number of panels/interior unit required.



SUPPORT END DETAIL FOR EXTERIOR UNIT

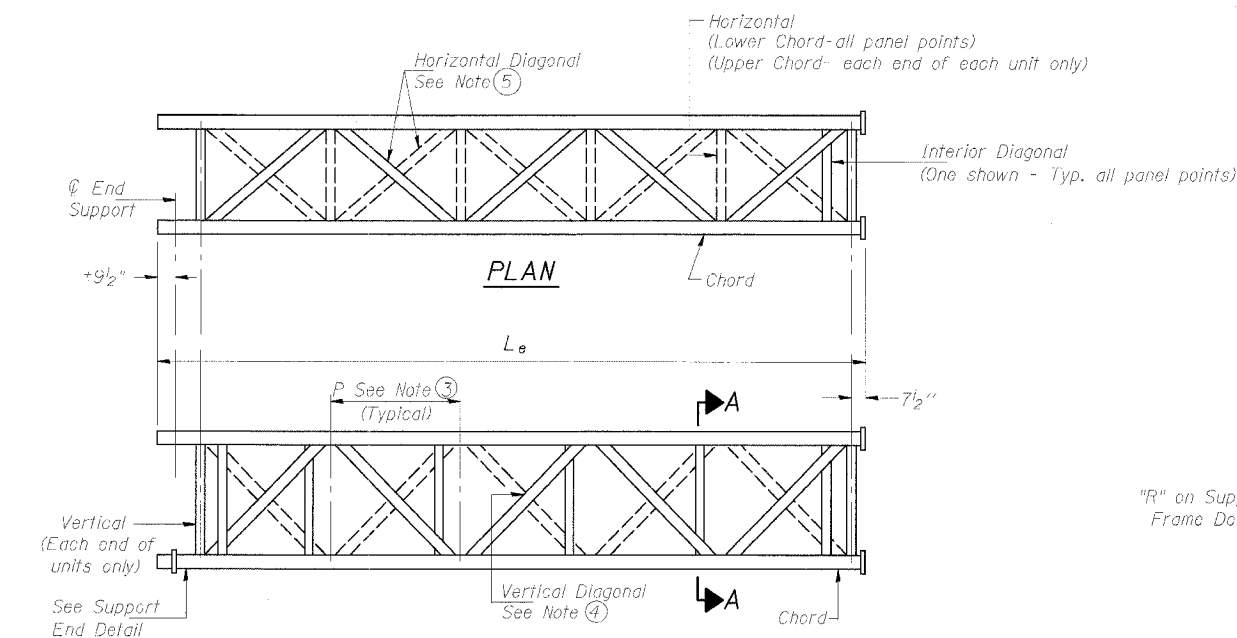


TYPICAL JOINT DETAILS

DETAIL A

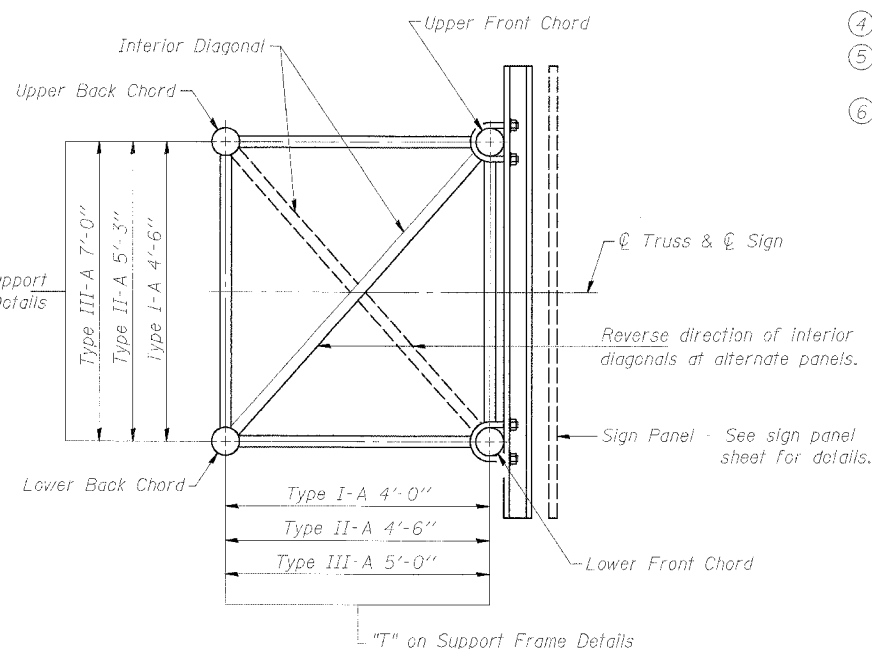
NOTES

- Contractor may alternatively use standard aluminum drive-fit cap to close end. $1/2"$ ϕ drain hole in end plate/drive-fit cap. (Typ. at ends of all chords)
- $5 1/2"$ end dimension may vary by $\pm 1"$ to provide uniform panel spacing (P).
- Panel spacing (P) shall be uniform for entire truss and between 4'-0" and 5'-0" for Type I-A or 4'-0" and 5'-6" for Types II-A and III-A.
- Vertical Diagonals in front and back face shall alternate.
- Hidden lines show wind bracing alternates direction between planes of top and bottom chords.
- All diagonals shall be detailed for minimum offset from the panel point based on the following: Offset shall be such as to provide a $3/4"$ minimum to $1 1/2"$ maximum clearance between any diagonal and any horizontal or vertical member, and to provide clearance for U-bolt connections of signs or walkway brackets.



**ELEVATION
TYPICAL EXTERIOR UNIT**

Even or odd number of panels/exterior units allowed.



SECTION A-A

DESIGNED - SWANG	EXAMINED	20
CHECKED - JAL	PASSED	ENGINEER OF STRUCTURAL SERVICES
DRAWN -		ENGINEER OF BRIDGES AND STRUCTURES
CHECKED -		

NUMBER	REVISION	DATE

OS-A-2 11/1/2002

**OVERHEAD SIGN STRUCTURES
ALUMINUM TRUSS DETAILS
FOR TRUSS TYPES I-A, II-A and III-A**

F.A.I. 94/90 (DAN RYAN EXPRESSWAY)
31st STREET TO 71st STREET
(NB Express Lanes)

P:\94066\Struct\EBK\Draws\Chtr\62300\CI_Signs\SS\100322.rvt 5/24/2005 2:25:37 PM