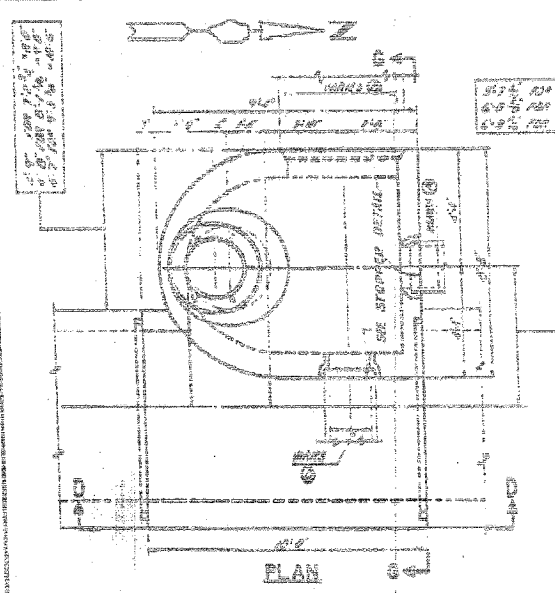
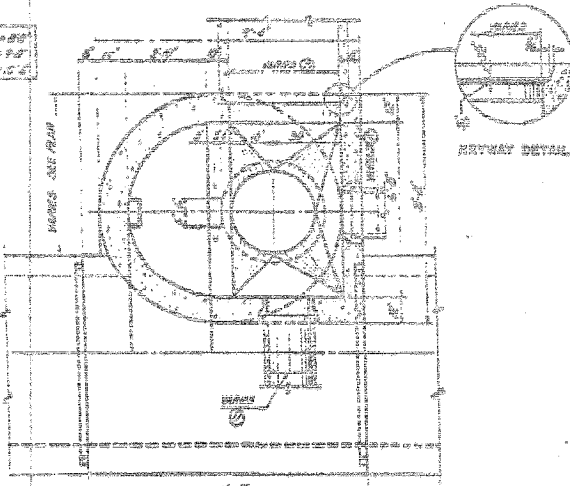


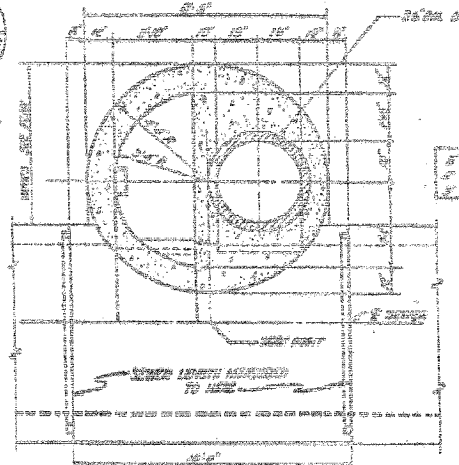
F.A.I.	SECTION	COUNTY	TOTAL SHEETS	SHEET NO.
94/90	*	COOK	556	420
STA.	TO STA.			
FED. ROAD DIST. NO.	ILLINOIS FED. AID PROJECT			
62300	*1818, ETC, 2324.6-1PR-8			



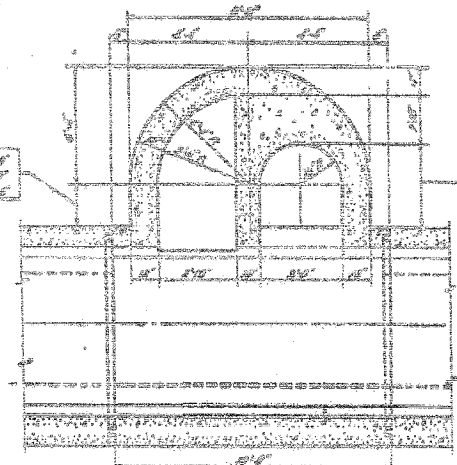
PLAN



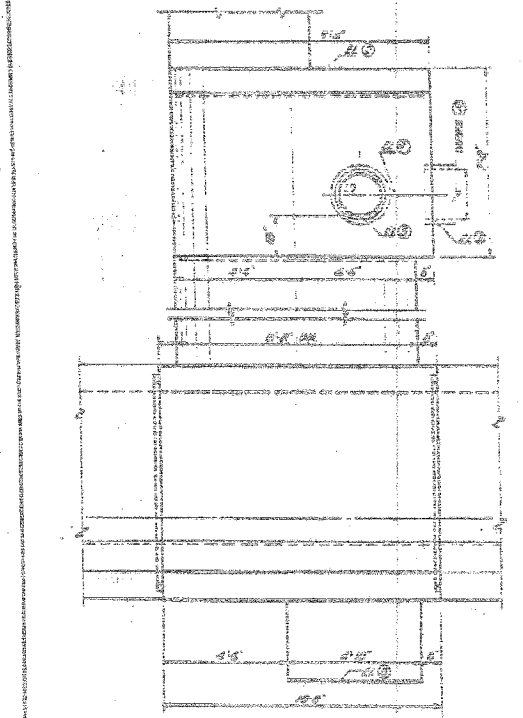
SECTIONAL PLAN A-A



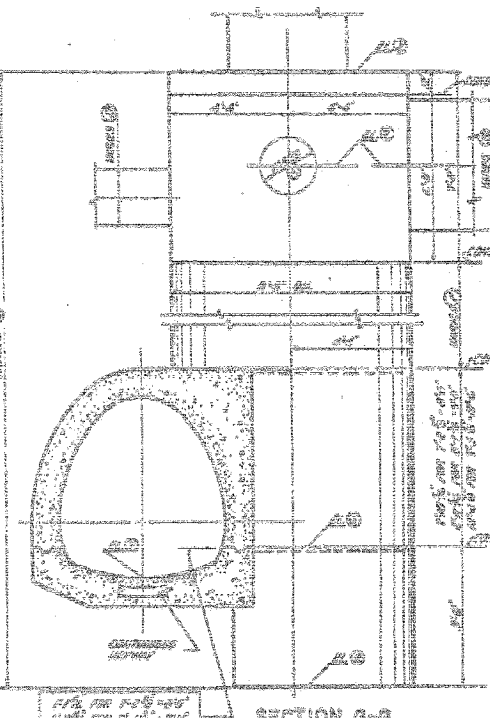
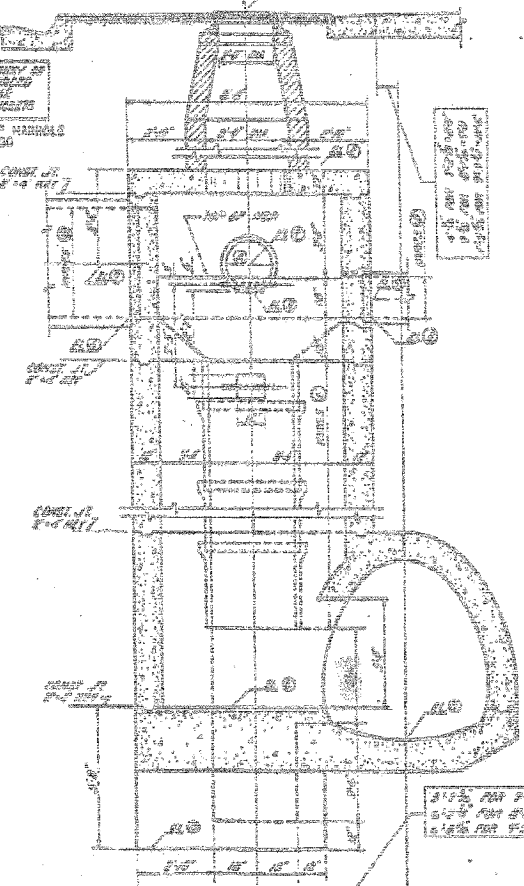
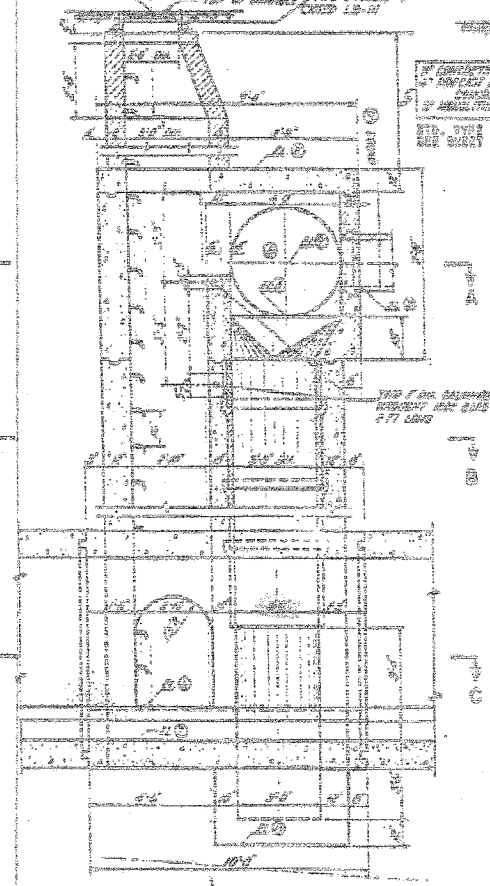
SECTIONAL PLAN B-B



SECTIONAL PLAN C-C



ELEVATION D-D



SECTION G-G

NOTES:

MATERIALS: THAT PORTION OF THE MANHOLE PROVIDED FOR ACCESS SHALL BE CONSTRUCTED IN ACCORDANCE WITH STANDARD TYPE "A" OR "B" MANHOLE PLANS AND SPECIFICATIONS. REINFORCING CONCRETE SHALL BE USED THROUGHOUT.

METHOD OF CONSTRUCTION: SEE PLAN & PROFILE SHEETS FOR LOCATION OF TYPE "B" MANHOLE AND ELEVATION OF 18" ABOVE FINISHED GRADE. THE MANHOLE SHALL BE CONSTRUCTED WITH 12" DIA. 40# STEEL REINFORCING BARS. THE BARS SHALL BE PLACED WITH 2" CLEARANCE TO CONCRETE. THE BARS SHALL BE LAP SPICED WITH 18" OVERLAP. THE BARS SHALL BE PLACED WITHIN THE CONCRETE WITHIN THE CLEARANCE SHALL BE 2".

PAVEMENT: THE CONTRACTOR SHALL PROVIDE THE NECESSARY CURB, GUTTER AND PAVEMENT TO MATCH THE EXISTING PAVEMENT. THE PAVEMENT SHALL BE PLACED AS REQUIRED. WHERE ROCK ELEVATION IS ENCOUNTERED IT WILL BE PAID FOR BY THE UNIT PRICE FOR ROCK REMOVAL FOR STRUCTURES.

FOR SCHEDULE OF DIMENSIONS AND ELEVATIONS FOR MANHOLE TYPE "B" SEE SHEET 94-99.

STOPPERS SHALL BE PROVIDED AT ALL LATERAL CONNECTIONS TO MAINTAIN SPECIAL TYPE "B" TRUCK STOPPERS SHALL BE USED OF BELLEVILLE COMPANY. MATERIAL AS APPROVED BY THE ENGINEER. THE COST OF THESE STOPPERS SHALL BE INCLUDED IN THE CONTRACT UNIT PRICE FOR MANHOLE SPECIAL TYPE "B".

THE CONTRACTOR SHALL PROVIDE THE CLASS Y CONCRETE FOR THE MANHOLE AND ALL REINFORCING BARS SHALL BE INCLUDED IN THE CONTRACT UNIT PRICE FOR MANHOLE SPECIAL TYPE "B".

CONCRETE STOPPER DETAIL (OPTIONAL)

WORK THIS SHEET WITH SHEETS 94-99 & 95

ILLINOIS DIVISION OF HIGHWAYS
SOUTH EXPRESSWAY
SPECIAL MANHOLE TYPE D 60" MAIN DRAIN

BOWMAN, BARRETT & ASSOCIATES INC.
CONSULTING ENGINEERS
Chicago, Illinois
312.228.0100
www.bbainc.com

FOR INFORMATION ONLY

REVISIONS	
NAME	DATE

SHEET JC-14 OF JC-22

ILLINOIS DEPARTMENT OF TRANSPORTATION
F.A.I. 94/90 (DAN RYAN EXPRESSWAY)
31ST STREET TO 71ST STREET
NB EXPRESS LANE RECONSTRUCTION
JUNCTION CHAMBERS
EXISTING DROP MANHOLE PLANS

SCALE: NTS
DATE: 07/07/05

DRAWN BY: BDC
CHECKED BY: BLU

6/24/2005 9:42:56 AM