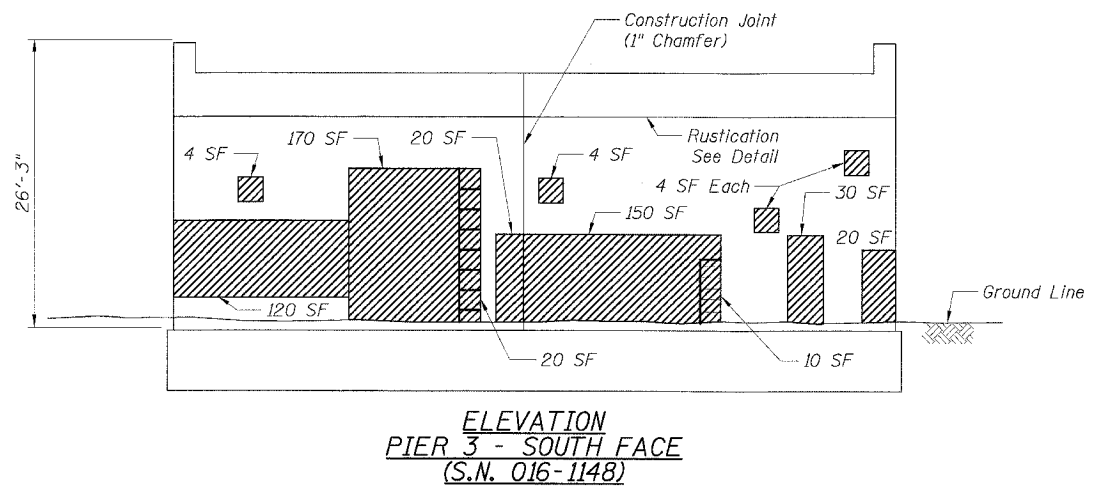
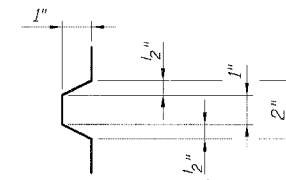
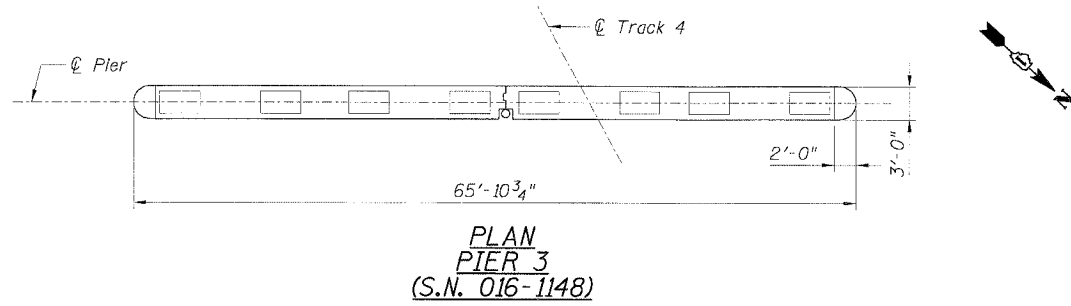


STATE OF ILLINOIS
DEPARTMENT OF TRANSPORTATION

F.A.I. RTE.	SECTION	COUNTY	TOTAL SHEETS	SHEET NO.
90/94	*	COOK	556	449
STA.	TO STA.			
FED. ROAD DIST. NO. 1	ILLINOIS	FED. AID PROJECT		
* (181B, ETC, 2324.6-1PIR-8			62300	



LEGEND

- Area of Formed Concrete Repair (Depth Equal to or Less than 5")
- Area of Formed Concrete Repair (Depth Greater than 5")
- Epoxy Crack Sealing

BILL OF MATERIAL		
Item	Unit	Quantity Pier 3 South Face
Formed Concrete Repair (Depth Equal to or Less Than 5")	Sq Ft	496
Formed Concrete Repair (Depth Greater Than 5")	Sq Ft	30
Epoxy Crack Sealing	LF	

REVISIONS	
NAME	DATE

ILLINOIS DEPARTMENT OF TRANSPORTATION
F.A.I. 90/94 (DAN RYAN EXPRESSWAY)

**PIER 3 - PLAN AND ELEVATION
SUBSTRUCTURE REPAIRS
METRA BRIDGE (SN 016-1148)
COOK COUNTY**

SCALE: None
DATE: JULY 7, 2005

DRAWN BY: CHD
CHECKED BY: MJP

CTE | AECOM

CTE
263 Ecor Roadway Drive, Suite 100, Chicago, Illinois 60608-5776
T 312.358.0200 F 312.358.1053 www.cteaecom.com

F:\P\40468 Struct\CK_K_Dwgs\Conr_62300\04_BridgeRepar\SN1148\037A-62300.s3f 6/21/2005 2:25:41 PM