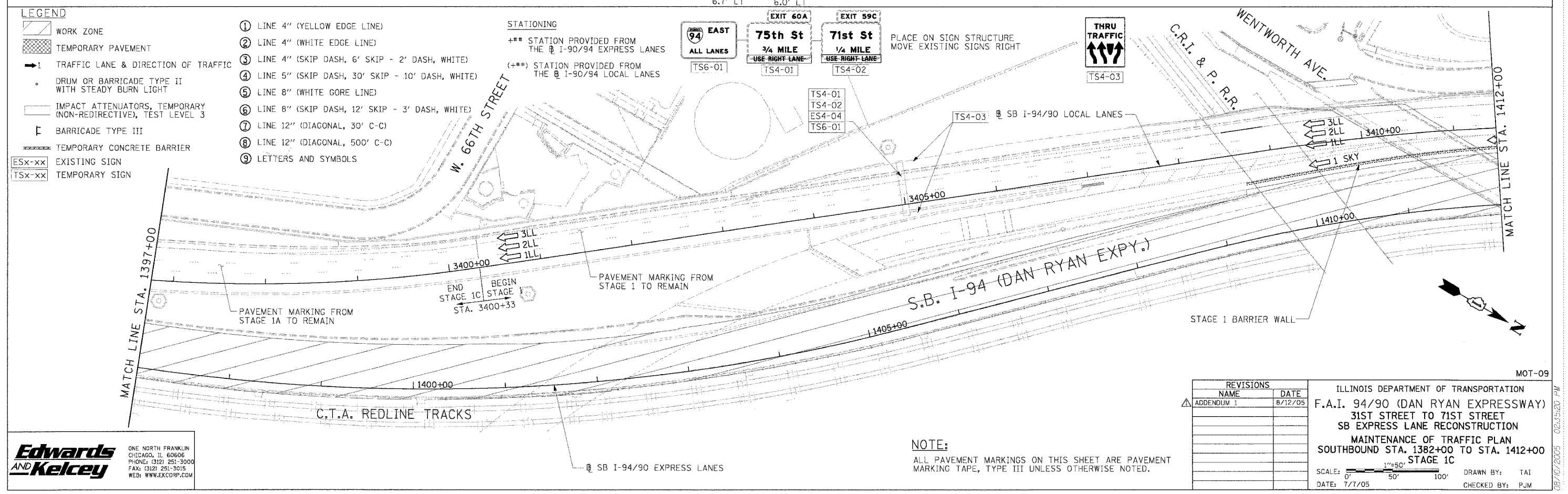
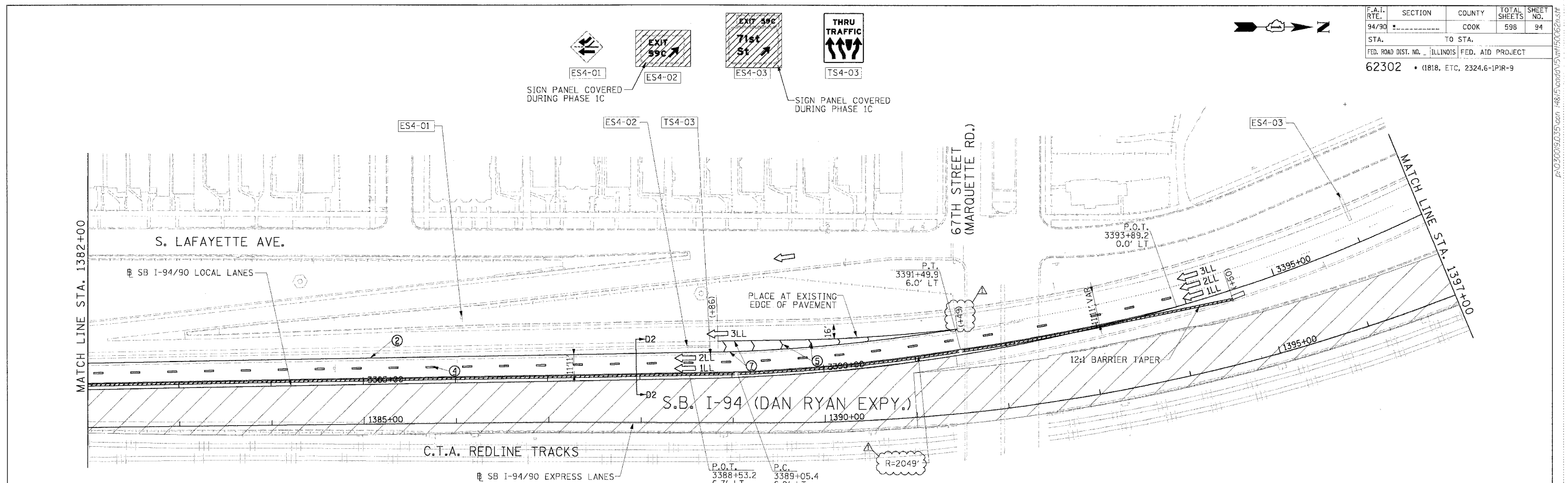


F.A.I. RTE.	SECTION	COUNTY	TOTAL SHEETS	SHEET NO.
94/90		COOK	598	94
STA.	TO STA.			
FED. ROAD DIST. NO.	ILLINOIS	FED. AID PROJECT		
62302	• (1818, ETC, 2324.6-1P1R-9			

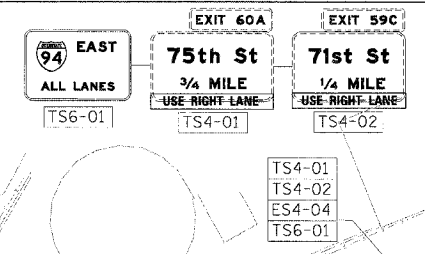


LEGEND

- WORK ZONE
- TEMPORARY PAVEMENT
- TRAFFIC LANE & DIRECTION OF TRAFFIC
- DRUM OR BARRICADE TYPE II WITH STEADY BURN LIGHT
- IMPACT ATTENUATORS, TEMPORARY (NON-REDIRECTIVE), TEST LEVEL 3
- BARRICADE TYPE III
- TEMPORARY CONCRETE BARRIER
- EXISTING SIGN
- TEMPORARY SIGN

- ① LINE 4" (YELLOW EDGE LINE)
- ② LINE 4" (WHITE EDGE LINE)
- ③ LINE 4" (SKIP DASH, 6' SKIP - 2' DASH, WHITE)
- ④ LINE 5" (SKIP DASH, 30' SKIP - 10' DASH, WHITE)
- ⑤ LINE 8" (WHITE GORE LINE)
- ⑥ LINE 8" (SKIP DASH, 12' SKIP - 3' DASH, WHITE)
- ⑦ LINE 12" (DIAGONAL, 30' C-C)
- ⑧ LINE 12" (DIAGONAL, 500' C-C)
- ⑨ LETTERS AND SYMBOLS

STATIONING
 +** STATION PROVIDED FROM THE SB I-90/94 EXPRESS LANES
 (+***) STATION PROVIDED FROM THE SB I-90/94 LOCAL LANES



PLACE ON SIGN STRUCTURE
 MOVE EXISTING SIGNS RIGHT

NOTE:

ALL PAVEMENT MARKINGS ON THIS SHEET ARE PAVEMENT MARKING TAPE, TYPE III UNLESS OTHERWISE NOTED.

REVISIONS	
NAME	DATE
ADDENDUM 1	6/12/05

ILLINOIS DEPARTMENT OF TRANSPORTATION
 F.A.I. 94/90 (DAN RYAN EXPRESSWAY)
 31ST STREET TO 71ST STREET
 SB EXPRESS LANE RECONSTRUCTION
 MAINTENANCE OF TRAFFIC PLAN
 SOUTHBOUND STA. 1382+00 TO STA. 1412+00
 STAGE 1C

SCALE: 1"=50'
 DATE: 7/1/05

DRAWN BY: TAI
 CHECKED BY: PJM

Edwards AND Kelcey
 ONE NORTH FRANKLIN
 CHICAGO, IL 60606
 PHONE: (312) 251-3000
 FAX: (312) 251-3015
 WEB: WWW.EKCORP.COM

MOT-09

P:\03\0019\03\05\0019_48\15\0019\15\1506\0628.rvt
 08/10/2005 02:45:20 PM