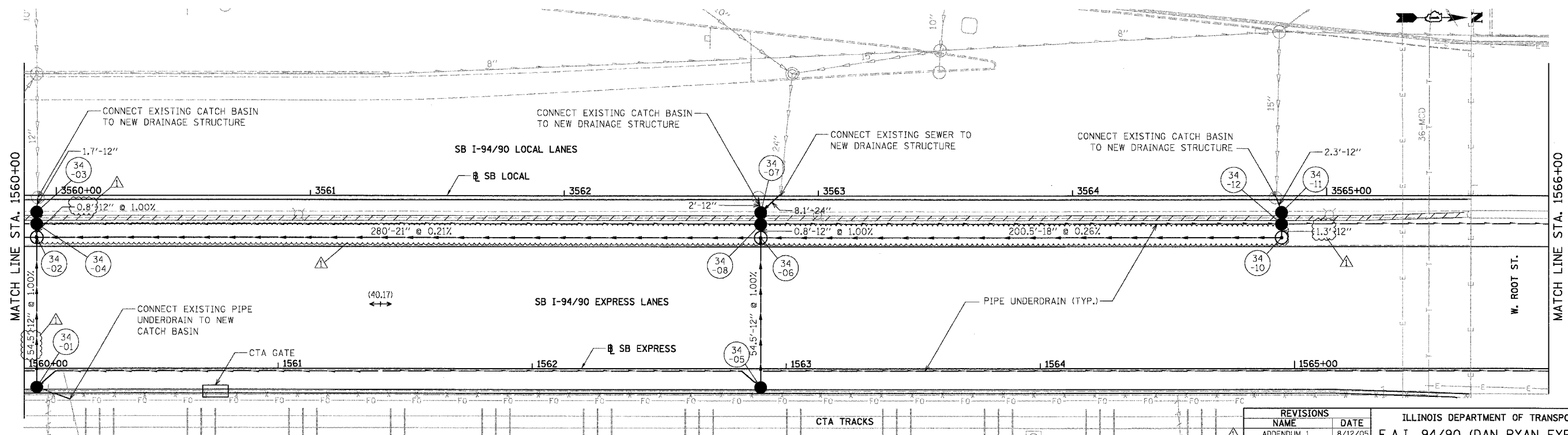
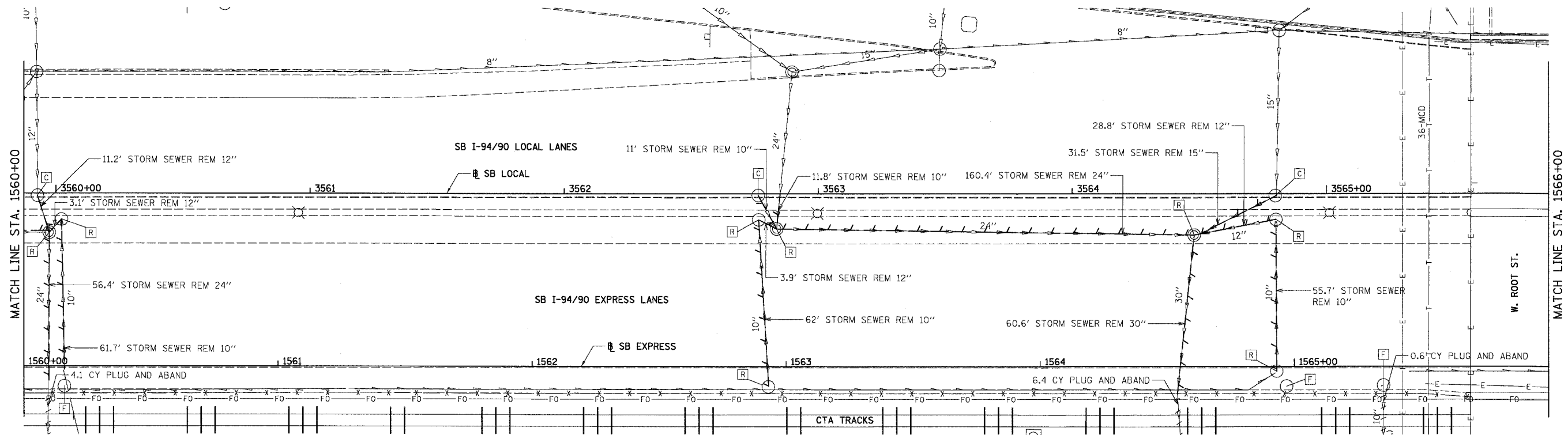
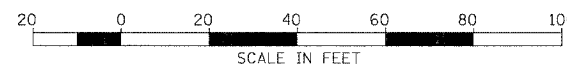


EXISTING CONDITIONS & REMOVALS

|                     |                             |        |              |           |
|---------------------|-----------------------------|--------|--------------|-----------|
| F.A.I.              | SECTION                     | COUNTY | TOTAL SHEETS | SHEET NO. |
| 94/90               | *                           | COOK   | 598          | 197       |
| STA.                | TO STA.                     |        |              |           |
| FED. ROAD DIST. NO. | ILLINOIS FED. AID PROJECT   |        |              |           |
| 62302               | • (1818, ETC, 2324.6-1P1R-9 |        |              |           |



BOWMAN, BARRETT & ASSOCIATES INC.  
CONSULTING ENGINEERS  
Chicago, Illinois  
312.228.0100  
www.bbandainc.com



PROPOSED CONDITIONS

| REVISIONS  | NAME | DATE    |
|------------|------|---------|
| ADDENDUM 1 |      | 8/12/05 |
|            |      |         |
|            |      |         |
|            |      |         |
|            |      |         |
|            |      |         |
|            |      |         |
|            |      |         |
|            |      |         |

ILLINOIS DEPARTMENT OF TRANSPORTATION  
F.A.I. 94/90 (DAN RYAN EXPRESSWAY)  
31ST STREET TO 71ST STREET  
SB EXPRESS LANE RECONSTRUCTION  
DRAINAGE AND UTILITIES PLAN  
SOUTHBOUND STA. 1560+00 TO STA. 1566+00  
SCALE: 1"=20'  
DATE: 07/07/05  
DRAWN BY: OC  
CHECKED BY: DDM

DU-34  
12/20/05 12:03:51 PM