

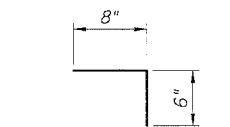
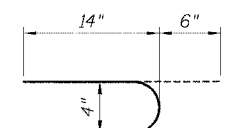
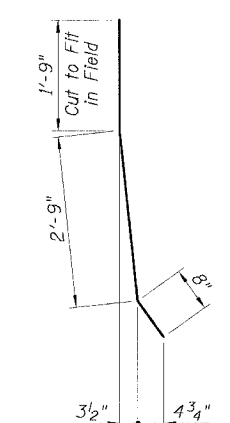
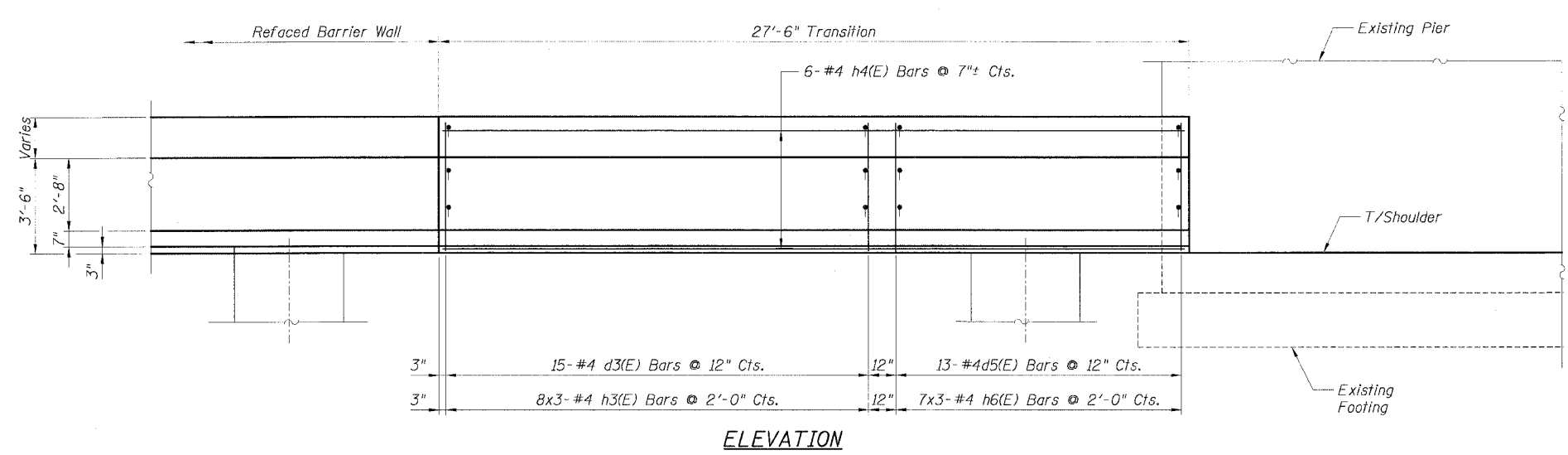
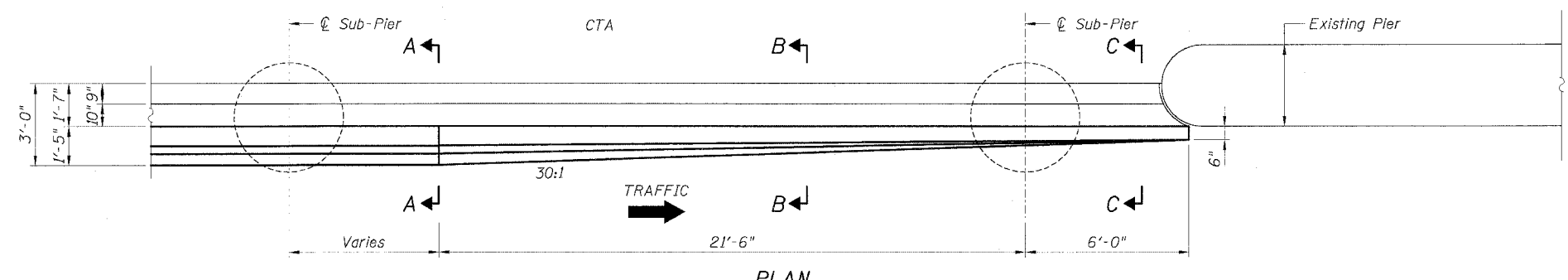
STATE OF ILLINOIS  
DEPARTMENT OF TRANSPORTATION

F.A.I. RTE.	SECTION	COUNTY	TOTAL SHEETS	SHEET NO.
90/94		COOK	598	419

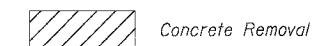
STA.	TO STA.
FED. ROAD DIST. NO. 1	ILLINOIS FED. AID PROJECT
(1818, ETC, 2324.6-101R-9	62302

**BILL OF MATERIAL  
FOR ONE TRANSITION**

Bar	No.	Size	Length	Shape
d3(E)	15	#4	5'-2"	—
d5(E)	13	#4	4'-8"	—
h3(E)	24	#4	1'-8"	—
h4(E)	6	#4	27'-2"	—
h6(E)	21	#4	1'-2"	—
Item	Unit	Quantity		
Reinforcement Bars, Epoxy Coated	Pound	240		
Concrete Superstructure	Cu. Yd.	3.1		
Protective Coat	Sq. Yd.	20		

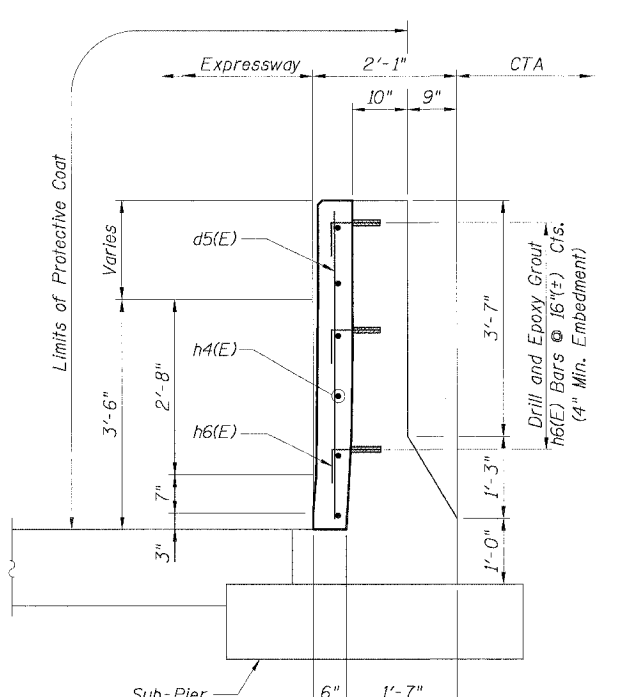
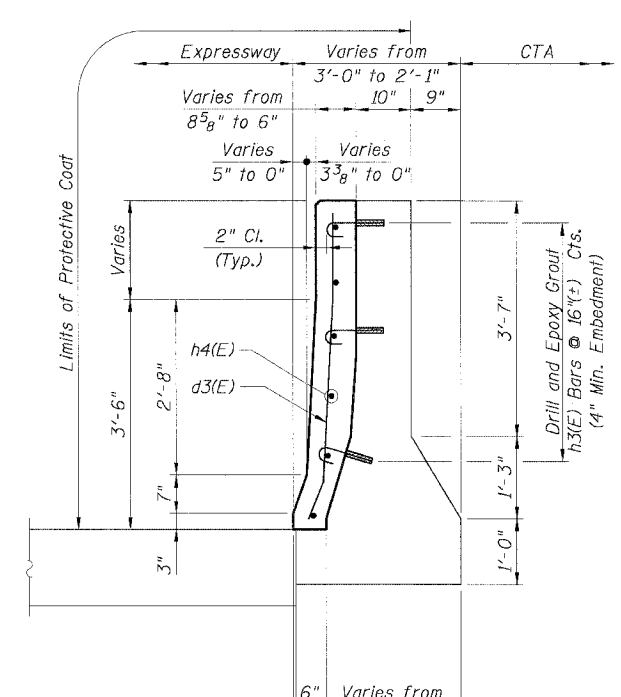
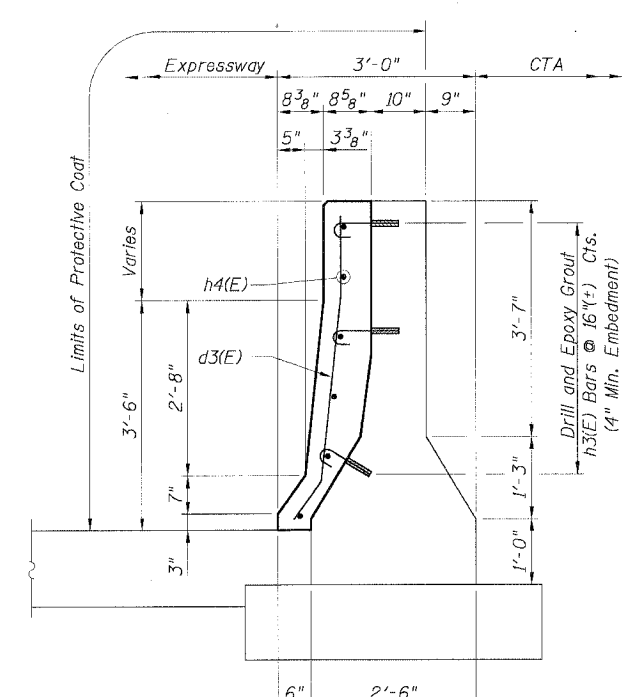


**LEGEND:**



**NOTES:**

1. Drilling and grouting of #4 h3(E) and h6(E) bars shall be in accordance with Section 584 of the Standard Specifications.
2. The cost of drilling holes, furnishing and placing Epoxy Grout and setting #4 h3(E) and h6(E) bars shall be included in the cost per cubic yard for Concrete Superstructure.
3. Provide joints in facing to match those in the existing barrier. See Sheet B7 for details.
4. For Solder Pile and Lagging Retention System, see Sheets B1, B4 and B5.
5. For Refaced Barrier Wall Details, see Sheets B4 and B5.
6. For Existing Concrete Repair Details, see Sheet B3.
7. For Facing Details at Existing Light Pole Foundation, see Sheet B5.
8. For locations of Transition, see Roadway Plans.



CTE | AECOM

REVISIONS	
NAME	DATE
MJP	8-12-05

ILLINOIS DEPARTMENT OF TRANSPORTATION  
F.A.I. 90/94 (DAN RYAN EXPRESSWAY)  
71ST STREET TO 31ST STREET (SB EXPRESS LANES)  
EXISTING BARRIER WALL MODIFICATIONS  
AT CTA STATIONS  
PROPOSED T/S SHOULDER AT OR ABOVE EXISTING  
REFACED BARRIER TO PIER  
TRANSITION DETAILS (NO TAPER)  
SCALE: None DRAWN BY: CHD  
DATE: July 7, 2005 CHECKED BY: ROP

Sheet B11 of 18