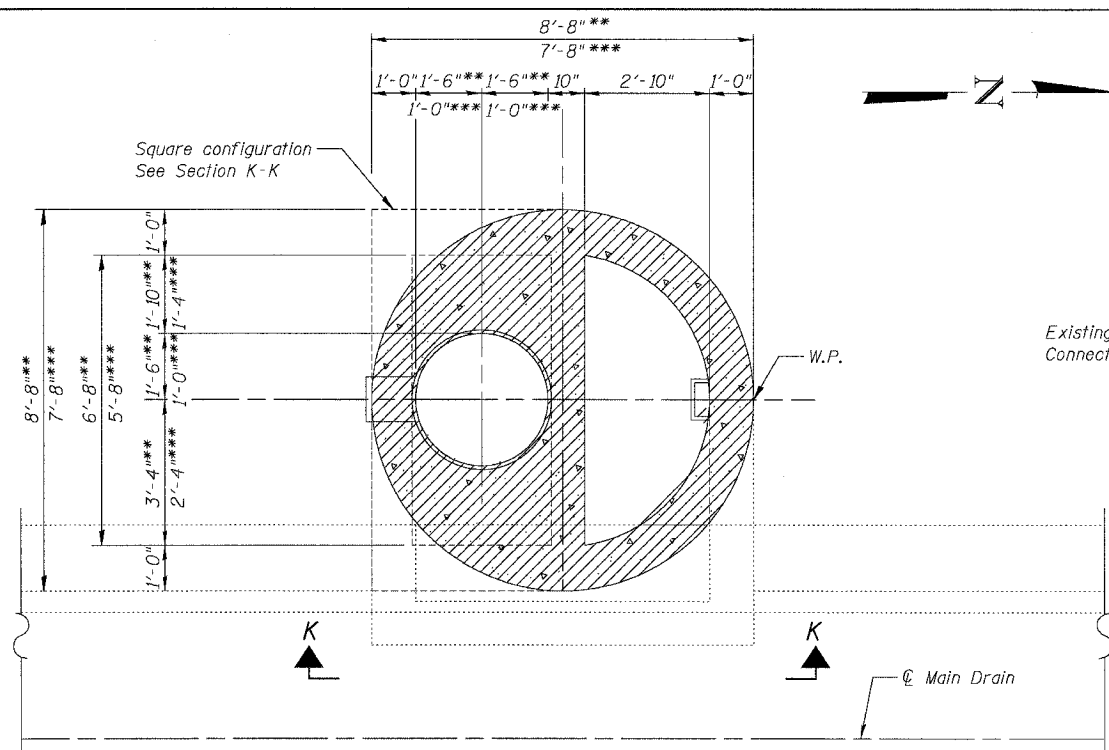
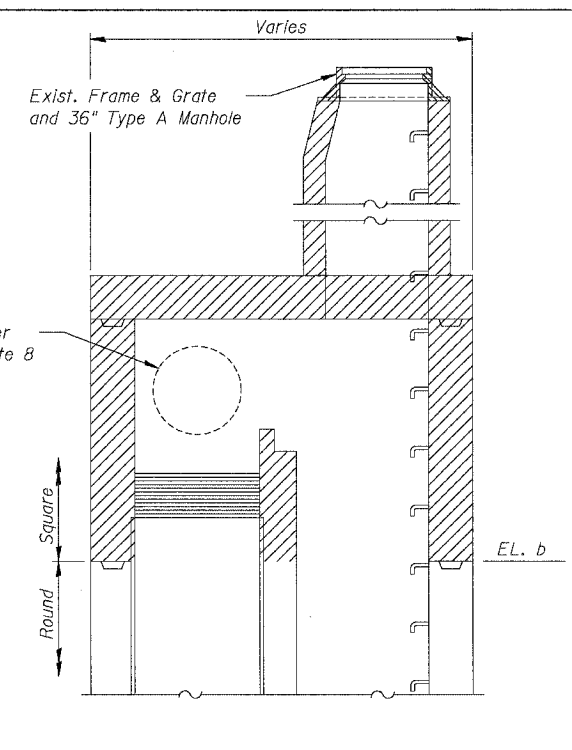


F.A.I.	SECTION	COUNTY	TOTAL SHEETS	SHEET NO.
94/90	*	COOK	598	454
STA.	TO STA.			
FED. ROAD DIST. NO.	ILLINOIS	FED. AID PROJECT		
62302	1816, ETC, 2324.6-1PR-9			



**REMOVAL PLAN**  
Shown for South oriented Drop Shaft  
See As-Built plan info for other exist. information



**SECTION K-K**

JC T2 19-01	***
JC T2 20-01	***
JC T2 23-01	***
JC T2 24-01	***
JC T2 28-01	**
JC T2 32-01	**
JC T2 35-02	**
JC T2 37-01	***
JC T2 38-01	**
JC T2 41-01	**
JC T2 44-01	**

**LEGEND:**  
[Hatched Box] Removal

- NOTES:**
1. Adjust elevations and dimensions provided in the table as necessary for the East and West pipe invert elevations set in the field.
  2. Adjust North and South connecting pipes to fit inside openings provided in Junction Chamber.
  3. For additional connections to the North and South riser shafts, see Drainage Plans.
  4. For As-Built drawings of the existing drop manholes, See Sheets JC-6 thru JC-22.
  5. Adjust station and offset provided in the table for the Work Point (W.P.) to match location of existing drop manhole found in the field.
  6. Contractor shall take care during removal of the existing drop manhole not to damage the existing clay drop shaft. Any repairs to the drop shaft shall not be measured for payment and shall be as directed by the Engineer.
  7. Removal of the existing drop manhole shall be included in the cost of the Junction Chamber and shall include the existing frame and lid, riser shafts, ladder rungs, concrete, reinforcement, and weir wall as shown. See Special Provisions.
  8. See Drainage Plans for location and abandonment/maintaining of existing storm sewers in drop manholes.

**TABLE OF JUNCTION CHAMBER INFORMATION**

Junction Chamber No.	Structure No.	Work Point		Existing Drop Manhole		North Rlm. EL.	South Rlm. EL.	EL. a	EL. b	West Pipe Connection				East Pipe Connection				North Pipe Connection			South Pipe Connection						
		Station	Offset	No.	Type					Pipe φ	Pipe Opening	Inv. El.	c	Pipe φ	Pipe Opening	Inv. El.	d	Pipe φ	Pipe Opening	Inv. El.	e	g	Pipe φ	Pipe Opening	Inv. El.	f	j
1	JC T2 19-01	2473+21	-6.0	-	B24N	-1.37	-1.36	-6.17	-14.92	36"	44"	-12.25	2'-9"	36"	44"	-12.25	2'-9"	15"	20"	-9.13	2'-2"	2'-0"	12"	16"	-9.32	2'-4"	2'-0"
2	JC T2 20-01	2478+13	-5.0	-	B24S	2.34	2.31	-3.95	-12.70	42"	51"	-9.99	2'-2"	42"	51"	-9.99	2'-2"	-	-	-	-	-	12"	16"	-7.32	2'-6"	2'-0"
3	JC T2 23-01	2499+01	-6.0	-	B24S	1.55	1.80	-3.56	-12.31	42"	51"	-9.60	2'-2"	42"	51"	-9.60	2'-2"	-	-	-	-	-	12"	16"	-6.56	2'-2"	2'-0"
4	JC T2 24-01	2504+44	-7.0	-	B24S	-2.14	-2.31	-4.94	-13.69	42"	51"	-10.98	2'-2"	42"	51"	-10.98	2'-2"	-	-	-	-	-	15"	20"	-9.11	3'-4"	2'-0"
5	JC T2 28-01	2527+73	-7.0	-	B36S	-4.21	-4.11	-11.39	-20.14	48"	51"	-17.39	1'-7"	42"	51"	-17.39	2'-2"	-	-	-	-	-	-	-	-	-	-
6	JC T2 32-01	2554+05	-3.2	DMH-48	B36S	-3.30	-3.21	-8.46	-17.21	42"	51"	-14.50	2'-2"	42"	51"	-14.50	2'-2"	12"	16"	-10.96	1'-8"	1'-11"	12"	16"	-10.96	1'-8"	1'-11"
7	JC T2 35-01	2568+63	-3.7	DMH-51	B36S	-3.55	-3.61	-8.76	-17.51	42"	51"	-14.80	2'-2"	36"	44"	-14.80	2'-8"	-	-	-	-	-	12"	16"	-11.26	1'-8"	1'-11"
8	JC T2 37-01	2580+04	-4.2	DMH-53	B24S	-4.36	-4.19	-10.42	-19.17	36"	44"	-16.50	2'-9"	36"	44"	-16.50	2'-9"	-	-	-	-	-	-	-	-	-	-
9	JC T2 38-01	2584+42	-7.2	DMH-54	36"DR	-3.37	-3.59	-8.50	-17.25	48"	58"	-14.50	1'-7"	42"	51"	-14.50	2'-1"	12"	16"	-11.00	1'-8"	1'-11"	12"	16"	-11.00	1'-8"	1'-11"
10	JC T2 41-01	2607+79	-7.9	DMH-57	36"DR	-1.18	-1.12	-9.00	-17.75	48"	58"	-15.00	1'-7"	48"	58"	-15.00	1'-7"	-	-	-	-	-	-	-	-	-	-
11	JC T2 44-01	2620+94	-4.0	DMH-59	36"DR	-0.69	-0.56	-9.96	-18.71	42"	51"	-16.00	2'-2"	42"	51"	-16.00	2'-2"	-	-	-	-	-	-	-	-	-	-

BOWMAN, BARRETT & ASSOCIATES INC.  
CONSULTING ENGINEERS  
Chicago, Illinois  
312.228.0100  
www.bbainc.com

REVISIONS	
NAME	DATE
ADDENDUM 1	8/12/05

SHEET JC-2 OF JC-22  
ILLINOIS DEPARTMENT OF TRANSPORTATION  
F.A.I. 94/90 (DAN RYAN EXPRESSWAY)  
31ST STREET TO 71ST STREET  
SB EXPRESS LANE RECONSTRUCTION  
JUNCTION CHAMBER, TYPE 2  
REMOVAL PLAN  
SCALE: N.T.S. DRAWN BY: DJM  
DATE: 07/07/05 CHECKED BY: BLU

8/11/2005 8:36:02 AM