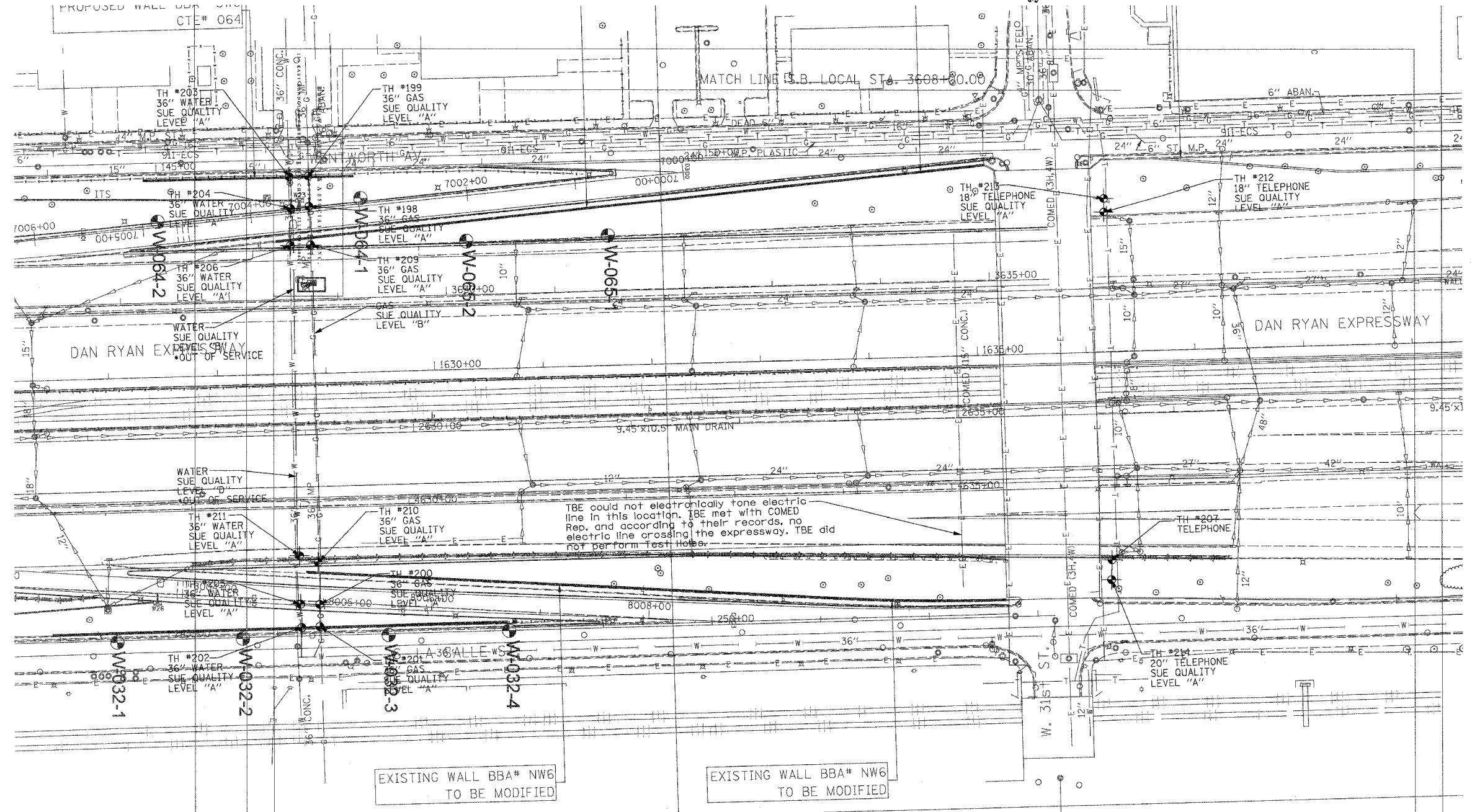


F.A. RTE.	SECTION	COUNTY	TOTAL SHEETS	SHEET NO.
	1816, 1717 & 1818-6	Cook	598	252
STA.	TO STA.			
FED. ROAD DIST. NO.	ILLINOIS FED. AID PROJECT			



TBE could not locate buried utilities directly beneath the expressway due to traffic and safety issues.

\*At the time of Quality Level "B" SUE services, the water lines were active. The lines, however, are now expected to be out of service per IDOT.

**TBE GROUP, INC.**  
 CIVIL ENGINEERING \* TRANSPORTATION \* ENVIRONMENTAL  
 \* PLANNING \* UTILITY ENGINEERING/LOCATING  
 SOUTHERN REGION: FL, GA, SC, NC  
 NORTHERN REGION: IL, IN, MI, OH, MD, NJ, NY  
 PA, VA, CANADA  
 WESTERN REGION: AZ, NV, NM, TX, CA, OR, UT, WA  
 IL09500164, 167, 168, 170, 171, 179, 180, 182, 204,  
 205, 206, 211, 212, 219, 221, 225, 226, 227, 228, 230, 232  
 TBE SUE PAGE NO: 36 of 36  
 Checked by: *[Signature]*  
 SUE Quality Level "A" : Test Holes  
 SUE Quality Level "B" : Designating

—TS—	—TS—	TRAFFIC SIGNAL
—SL—	—SL—	STREET LIGHT
—COCE—		CITY OF CHICAGO ELECTRIC
—T—	—T—	TELEPHONE
—W—		WATER
—G—		GAS
—CTV—	—CTV—	CABLE TELEVISION
—FO—	—FO—	FIBER OPTIC
—E—		ELECTRIC
●		TEST HOLE

Utilities shown on these plans as depicted in the legend have been investigated by TBE Group, Inc in accordance with SUE Industry Standards. All other information shown has been provided to TBE Group, Inc by others.

205 W. WACKER DRIVE  
 SUITE 1020  
 CHICAGO, IL 60606  
 (312) 704-1970

REVISIONS	
NAME	DATE

ILLINOIS DEPARTMENT OF TRANSPORTATION  
 SUE Investigation of Underground Utilities  
 I-90/I-94 Dan Ryan Expressway from  
 I-57, to 69th Street  
 Contract Number: 62590, 62592, 62594  
 SQL "B" DATE : 7/22/04  
 DRAWN BY : KLC  
 SCALE : 1" = 50'

Revised sheet 1/1/05