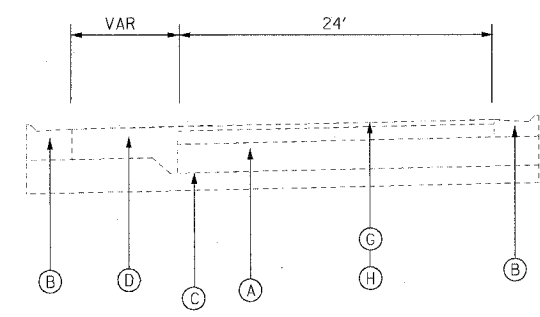
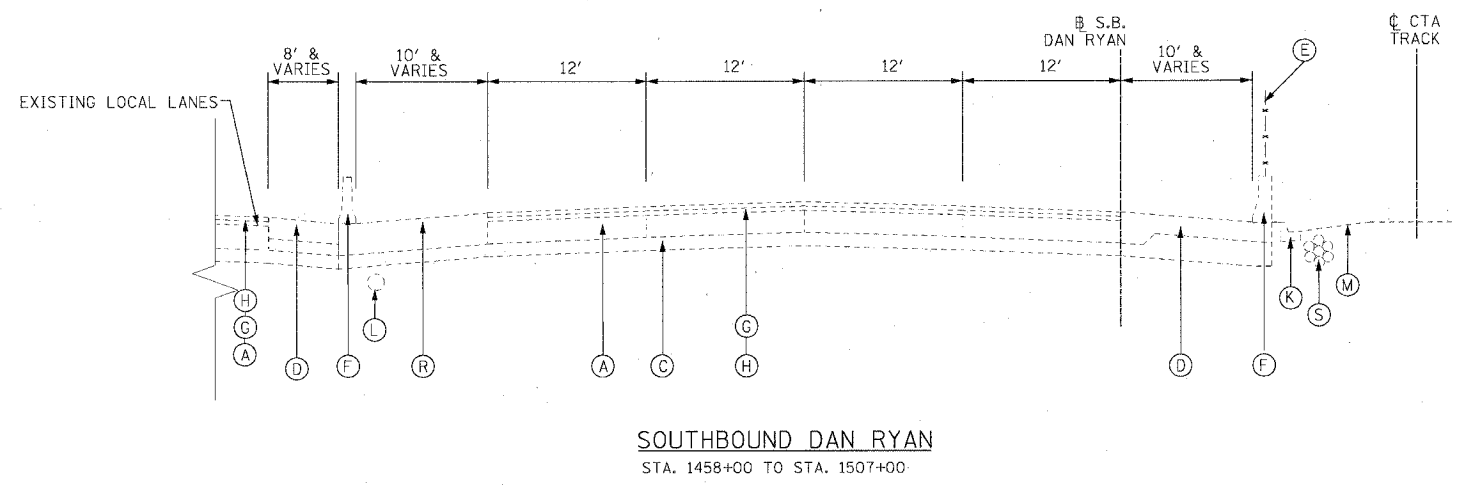
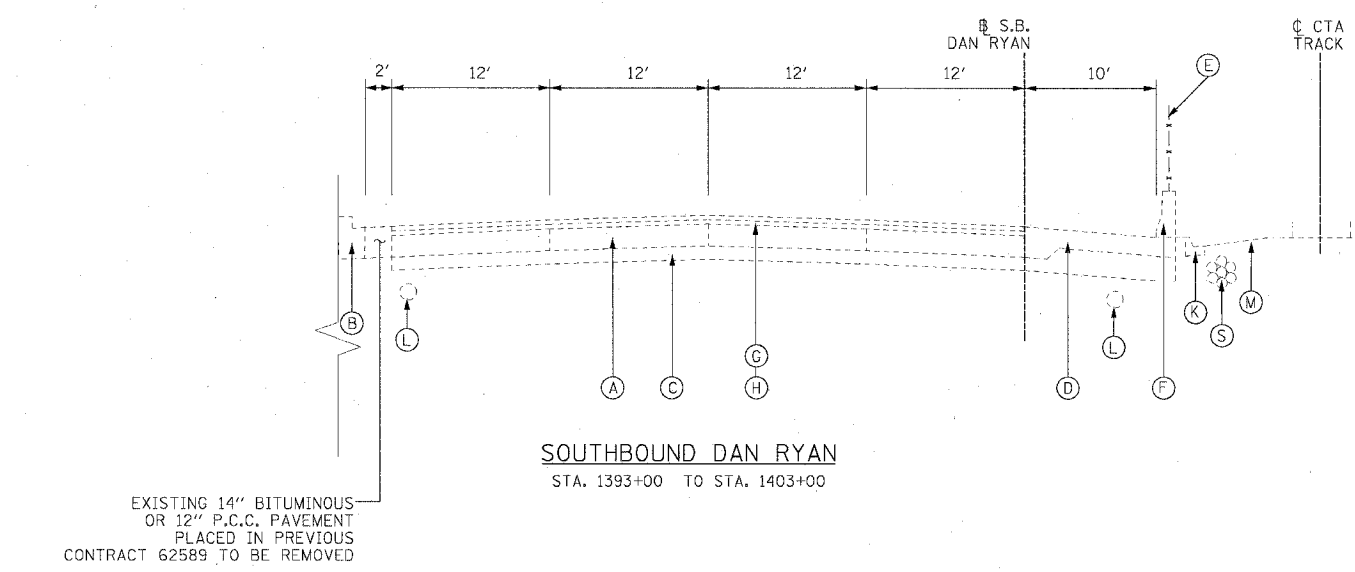
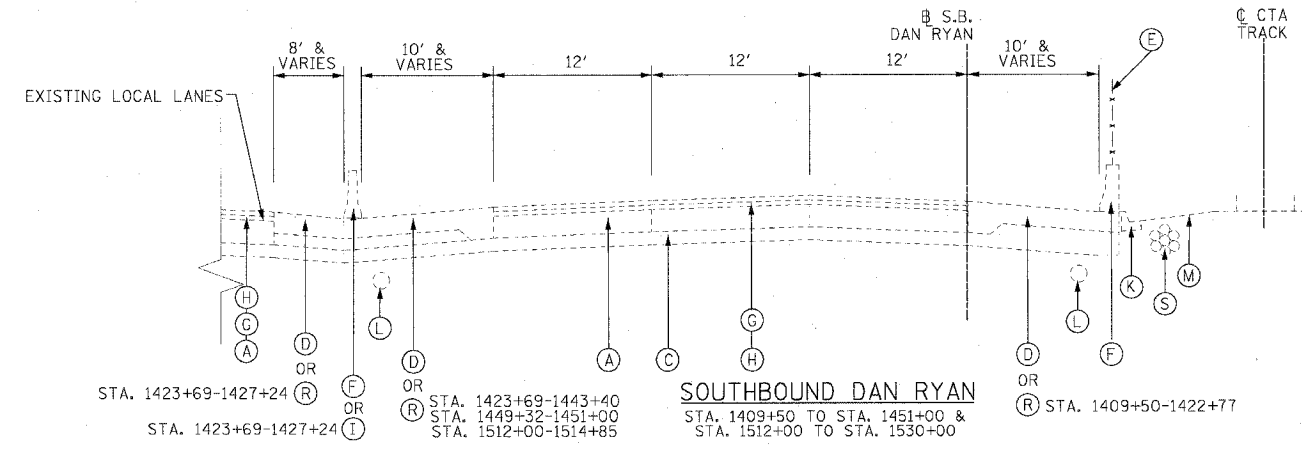
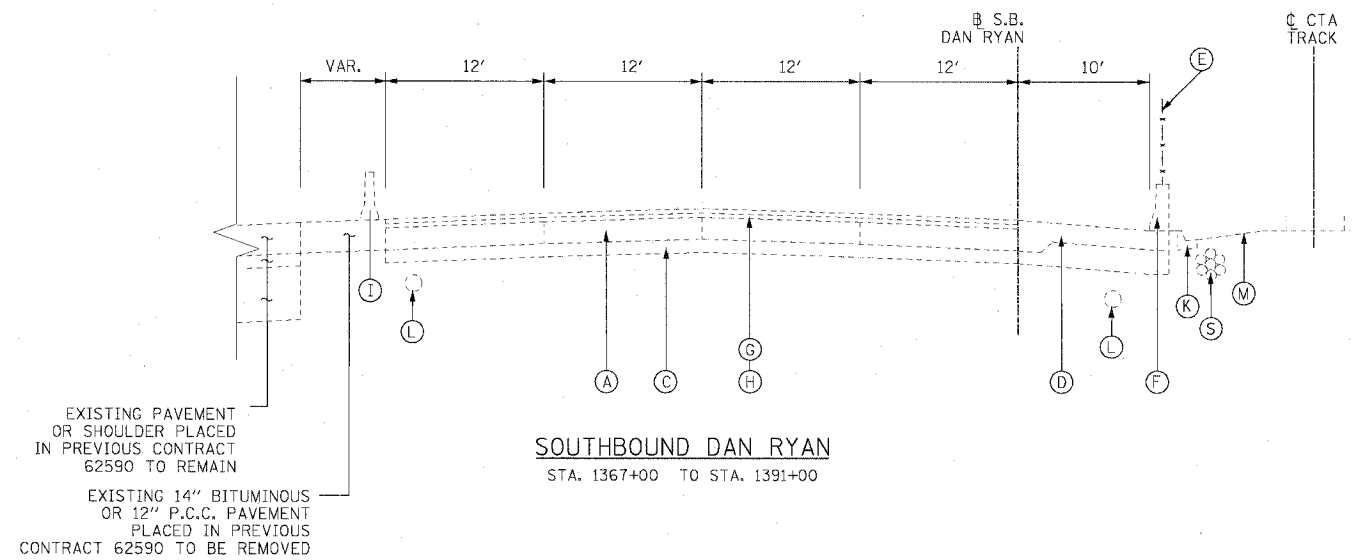


F.A.I. RTE.	SECTION	COUNTY	TOTAL SHEETS	SHEET NO.
94/90		COOK	598	12
STA.	TO STA.			
FED. ROAD DIST. NO.	ILLINOIS FED. AID PROJECT			
62302	41818, ETC, 2324.6-1PR-9			



- EXISTING CONDITIONS LEGEND**
- (A) P.C.C. PAVEMENT 10" OR C.R.C. PAVEMENT 8" (SEE NOTE 1)
 - (B) COMBINATION CONCRETE CURB AND GUTTER
 - (C) GRANULAR SUB-BASE 6"
 - (D) P.C.C. SHOULDER 9"
 - (E) CHAIN LINK FENCE
 - (F) CONCRETE BARRIER
 - (G) BITUMINOUS CONCRETE SURFACE COURSE, 1 1/2"
 - (H) BITUMINOUS CONCRETE BINDER COURSE, 4 3/4"
 - (I) TEMPORARY CONCRETE BARRIER

- (J) C.R.C. PAVEMENT 8"
- (K) TYPE 34 CURB AND GUTTER
- (L) PIPE UNDERDRAINS 8"
- (M) C.T.A. BALLAST
- (N) BITUMINOUS CONCRETE SURFACE COURSE 1 3/4"
- (O) BITUMINOUS CONCRETE SURFACE COURSE 2 1/4"
- (P) BITUMINOUS CONCRETE SURFACE COURSE 3 1/2"
- (Q) 4" STABILIZED SHOULDER B.A.M.
- (R) BITUMINOUS CONCRETE SURFACE COURSE 1 3/4"; BITUMINOUS CONCRETE BASE COURSE 12 1/4"
- (S) CTA FIBER OPTIC DUCT
- (T) C.R.C. PAVEMENT 13"
- (U) 4" STABILIZED SUB-BASE B.A.M.
- (V) PORTLAND CEMENT CONCRETE SHOULDERS 13"

NOTE:

- P.C.C. PAVEMENT 10" STA. 2367+00 TO 2410+00
C.R.C. PAVEMENT 8" STA 2410+00 TO STA 2530+00
- THICKNESS OF EXISTING PAVEMENT AND SUB BASES ARE TAKEN FROM AS-BUILT PLANS.
- REMOVAL OF TYPE 34 COMBINATION CONCRETE CURB AND GUTTER SHALL BE PERFORMED AS REQUIRED. THIS REMOVAL WILL BE INCLUDED IN THE COST OF CTA BARRIER REMOVAL AND WILL NOT BE PAID FOR SEPARATELY.

REVISIONS	
NAME	DATE

ILLINOIS DEPARTMENT OF TRANSPORTATION
F.A.I. 94/90 (DAN RYAN EXPRESSWAY)
31ST STREET TO 71ST STREET
SB EXPRESS LANE RECONSTRUCTION
EXISTING TYPICAL SECTIONS
SOUTHBOUND DAN RYAN

SCALE: NONE
DATE: 7/7/05

DRAWN BY: TAI
CHECKED BY: PJM



PA-03-009.03 Rev. 1/04 P&R/CAD/DVS/LSI/SDD/03-07

06/24/2005 09:02:49 AM