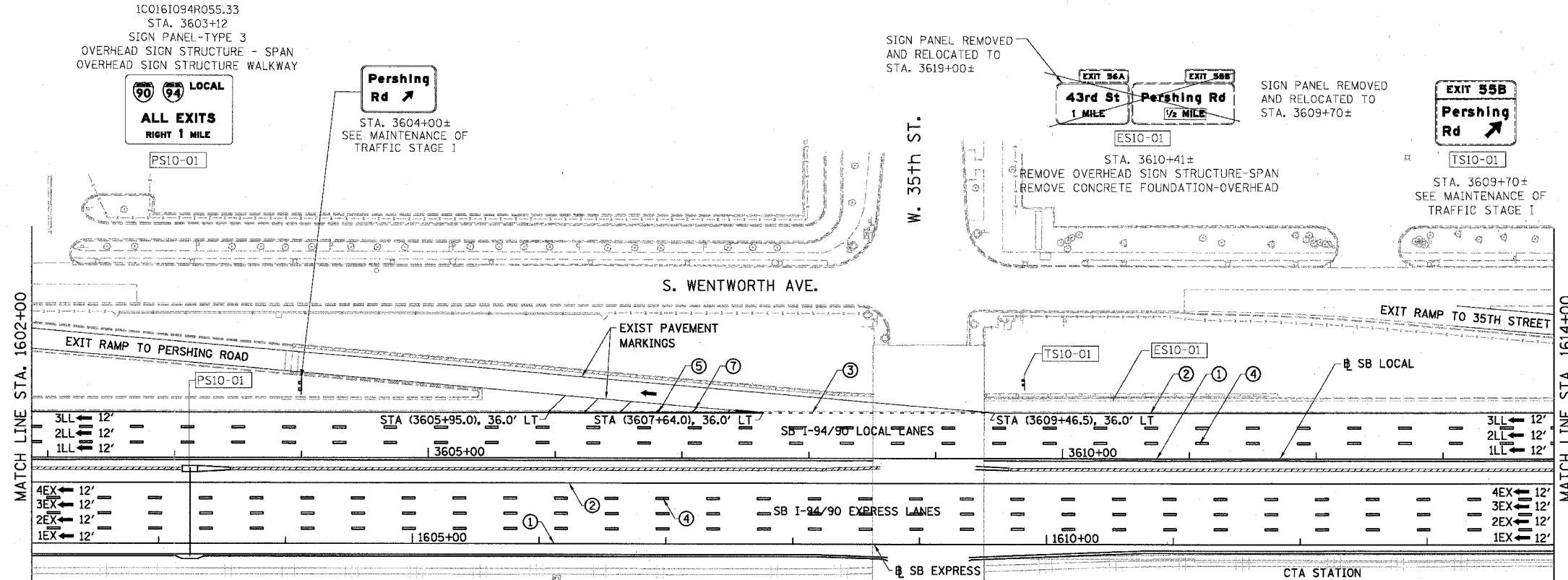
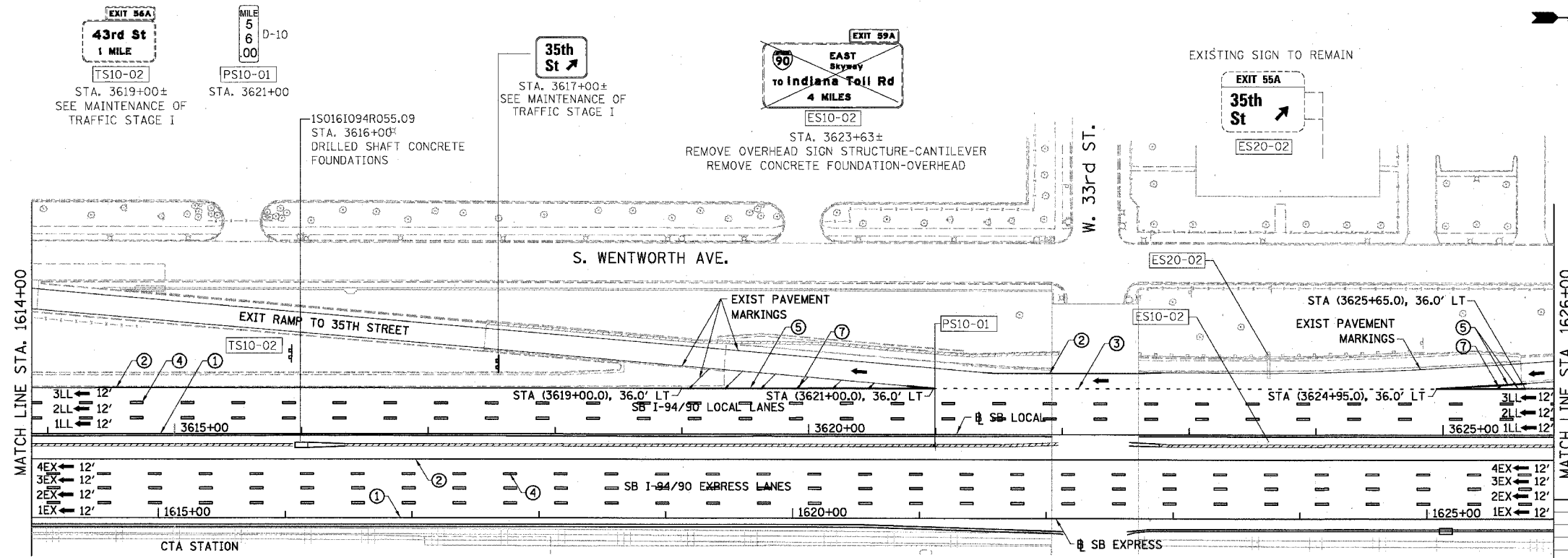


F.A.I.	SECTION	COUNTY	TOTAL SHEETS	SHEET NO.
94/90	*	COOK	598	296
STA. 1602+00 TO STA. 1626+00		ILLINOIS FED. AID PROJECT		

62302 • (1818, ETC. 2324.6-1)PR-9



- LEGEND**
- ① LINE 4" (YELLOW EDGE LINE)
  - ② LINE 4" (WHITE EDGE LINE)
  - ③ LINE 4" (SKIP DASH, 6' SKIP - 2' DASH, WHITE)
  - ④ LINE 5" (SKIP DASH, 30' SKIP - 10' DASH, WHITE)
  - ⑤ LINE 8" (WHITE GORE LINE)
  - ⑥ LINE 8" (SKIP DASH, 12' SKIP - 3' DASH, WHITE)
  - ⑦ LINE 12" (DIAGONAL, 30' C-C)
  - ⑧ LINE 12" (DIAGONAL, 500' C-C)
  - ⑨ LETTERS AND SYMBOLS
- ESx-xx EXISTING SIGNS  
 TSx-xx TEMPORARY SIGNS  
 PSx-xx PROPOSED SIGNS



- STATIONING**
- \*\*\*.## STATION PROVIDED FROM THE SB I-90/94 EXPRESS LANES
  - (+\*\*\*.##) STATION PROVIDED FROM THE SB I-90/94 LOCAL LANES
  - [+\*\*\*.##] STATION PROVIDED FROM THE SLIP RAMP

NOTE:  
 ALL PAVEMENT MARKINGS ON THIS SHEET WILL BE EPOXY PAVEMENT MARKING, UNLESS OTHERWISE NOTED. PMK-10

REVISIONS NAME	DATE

ILLINOIS DEPARTMENT OF TRANSPORTATION  
 F.A.I. 94/90 (DAN RYAN EXPRESSWAY)  
 31ST STREET TO 71ST STREET  
 SB EXPRESS LANE RECONSTRUCTION  
 PAVEMENT MARKING AND SIGNING PLAN  
 SOUTHBOUND STA. 1602+00 TO STA. 1626+00  
 SCALE: 1"=50'  
 DATE: 07/07/05  
 DRAWN BY: RA  
 CHECKED BY: RS

BOWMAN, BARRETT & ASSOCIATES INC  
 CONSULTING ENGINEERS  
 Chicago, Illinois  
 312.228.0100  
 www.bbainc.com

