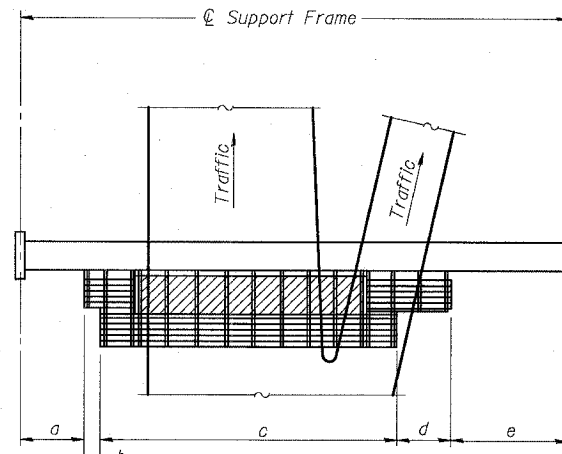


STATE OF ILLINOIS
DEPARTMENT OF TRANSPORTATION

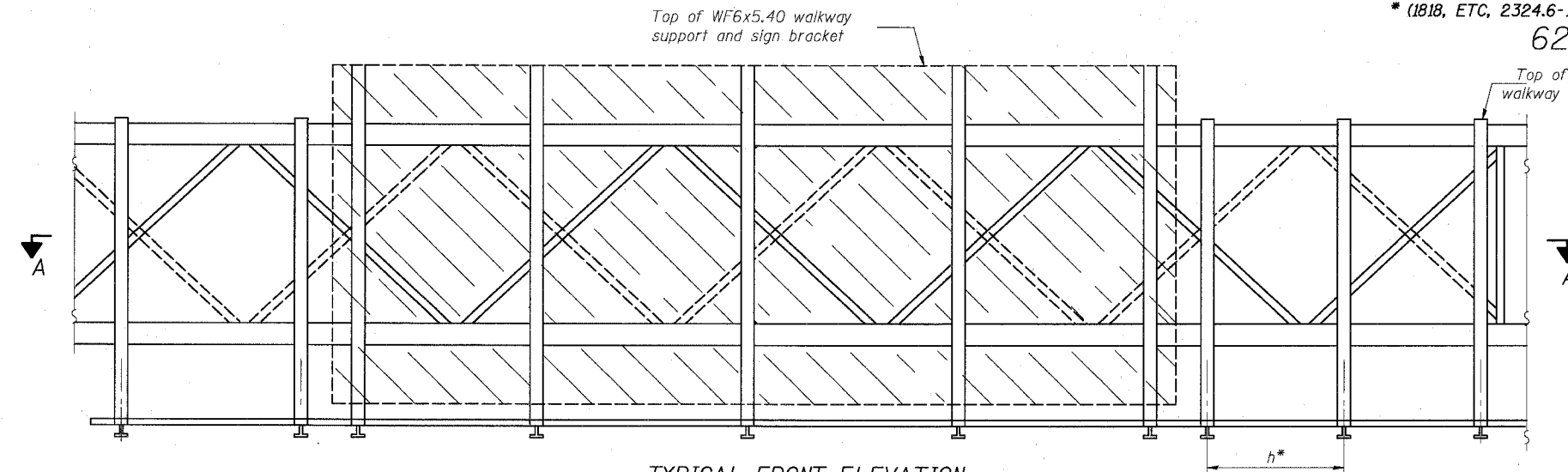
ROUTE NO.	SECTION	COUNTY	SHEET NO.	SHEET NO.
90/94	*	COOK	598	320
FED. ROAD DIST. NO. 7 ILLINOIS FED. AID PROJECT				
* (1818, ETC, 2324.6-IP) R-9				

62302



WALKWAY AND HANDRAIL SKETCH

(Road plan beneath truss varies)



TYPICAL FRONT ELEVATION

With handrail omitted for clarity.
For Section B-B, see Base Sheet OS-A-10-DMS2
For Section B'-B', and B''-B'', see Base Sheet OS-A-10a-DMS2

Walkway and Truss Grating width dimensions are nominal and may vary $\pm 1/2$ " based on available standard widths.

BRACKET TABLE

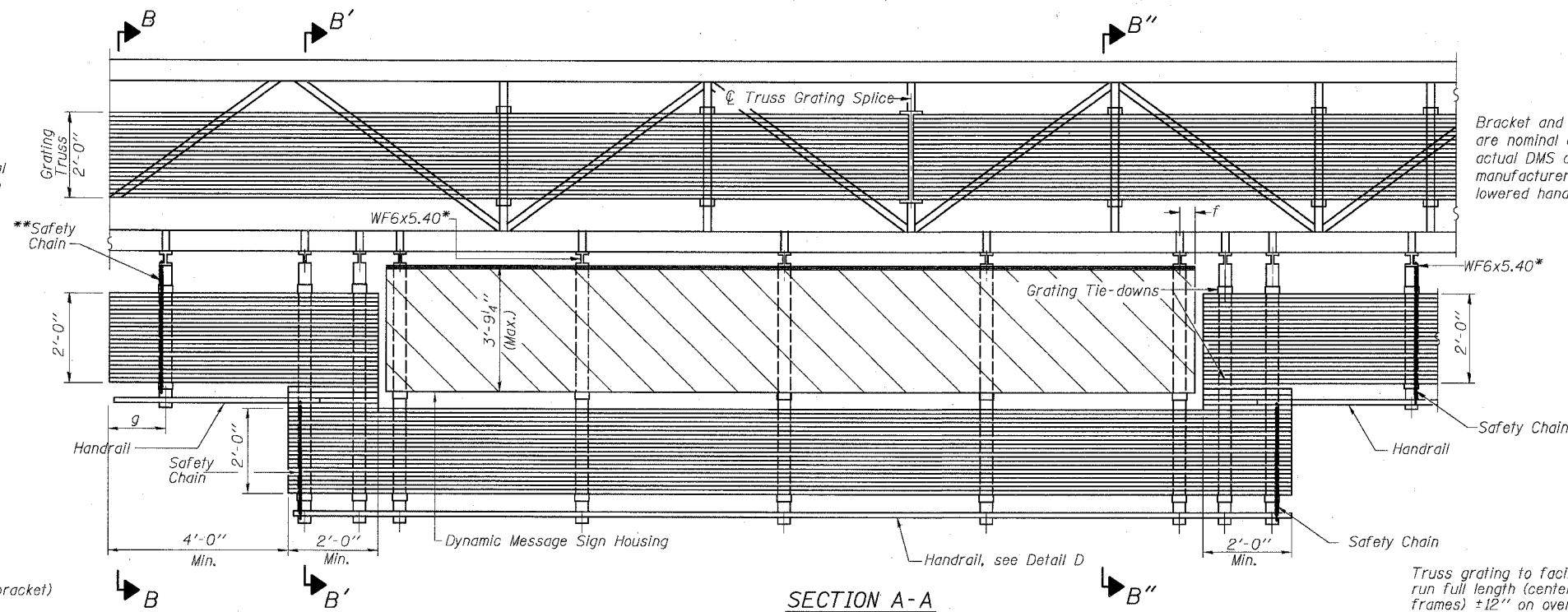
Sign Width		Number Brackets Required
Greater Than	Less Than or Equal To	
10'-0"	10'-0"	2
16'-0"	16'-0"	3
22'-0"	22'-0"	4
28'-0"	28'-0"	5
34'-0"	34'-0"	6

Notes: *Space WF6x5.40 brackets for efficiency and within limits shown:

- f = 12" maximum, 4" minimum (End of sign to \mathcal{C} of nearest bracket)
- g = 12" maximum, 4" minimum (End of walkway grating to \mathcal{C} of nearest support bracket)
- h = 6'-0" maximum (\mathcal{C} to \mathcal{C} of walkway support brackets, WF6x5.40)

**If walkway bracket at safety chain location is behind sign, add angle to bracket, see Alternate Safety Chain Attachment on Base Sheet OS-A-11-DMS2

For Details T and W, Section B-B and Grating Splice Details, see Base Sheet OS-A-10-DMS2.
For Details D, F, G and P and Handrail Splice Details, see Base Sheet OS-A-11-DMS2.



Bracket and grating dimensions are nominal and will vary based on actual DMS cabinet dimensions plus manufacturer's mounting devices, lowered handrail and DMS cabinet.

Truss grating to facilitate inspection shall run full length (center to center of support frames) ± 12 " on overhead trusses. Cost of truss grating is included in "Overhead Sign Structure"

Handrail and walkway shall span a minimum of three brackets between splices and/or gap joints. Place all sign and walkway brackets as close to panel points as practical. Grating and handrail splices placed as needed.

SGN-23

OVERHEAD SIGN STRUCTURES
ALTERNATE ALUMINUM WALKWAY DETAILS

F.A.I. 90/94 (DAN RYAN EXPRESSWAY)
31st Street to 71st Street
(SB Express Lanes)

DESIGNED	
CHECKED	
DRAWN	
CHECKED	

EXAMINED	19
PASSED	ENGINEER OF STRUCTURAL SERVICES
	ENGINEER OF BRIDGES AND STRUCTURES

NUMBER	REVISION	DATE

Structure Number	Station	a	b	c	d	e	Walkway Grating and Handrail Lengths
ISO161094R057.7	1476+25.00	4.69'	12.00'	32.00'	12.00'	7.33'	56.00'
ISO161094R055.64	3586+80	10.71'	9.54'	31.08'	11.38'	7.12'	56.0'

OS-A-9-DMS2 7/1/2001

6/24/2005 3:52:16 PM