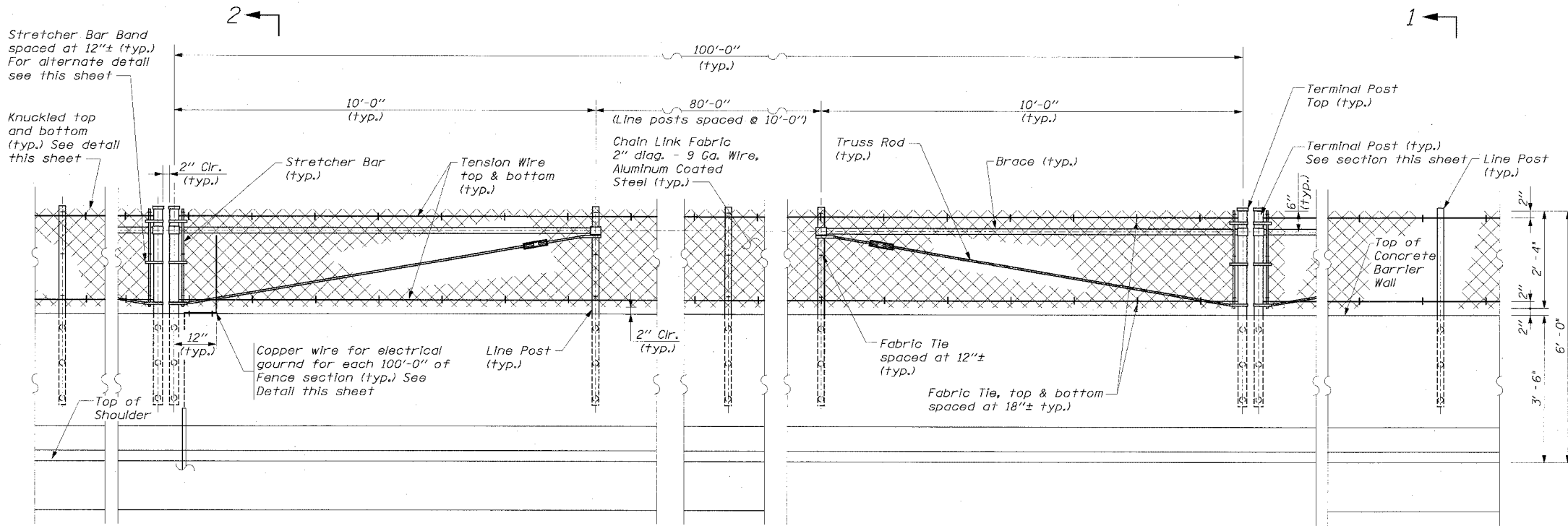


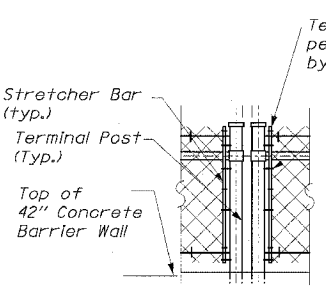
F.A.I. RTE.	SECTION	COUNTY	TOTAL SHEETS	SHEET NO.
94/90	*	COOK	598	397
STA.	TO STA.			
FED. ROAD DIST. NO.	ILLINOIS FED. AID PROJECT			
62302	• 11818, ETC, 2324.6-1P/R-9			



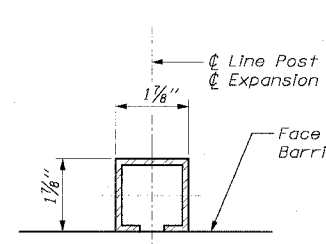
ELEVATION
CHAIN LINK FENCE ON CONCRETE BARRIER WALL

Stretcher Bar Band spaced at 12"± (typ.) For alternate detail see this sheet

Knuckled top and bottom (typ.) See detail this sheet

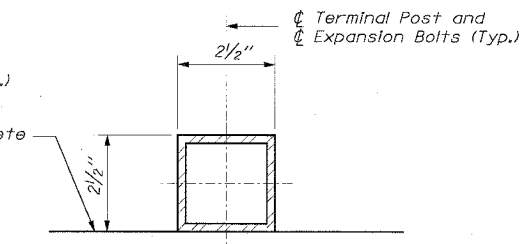


ALTERNATE DETAIL FOR STRETCHER BAR BAND



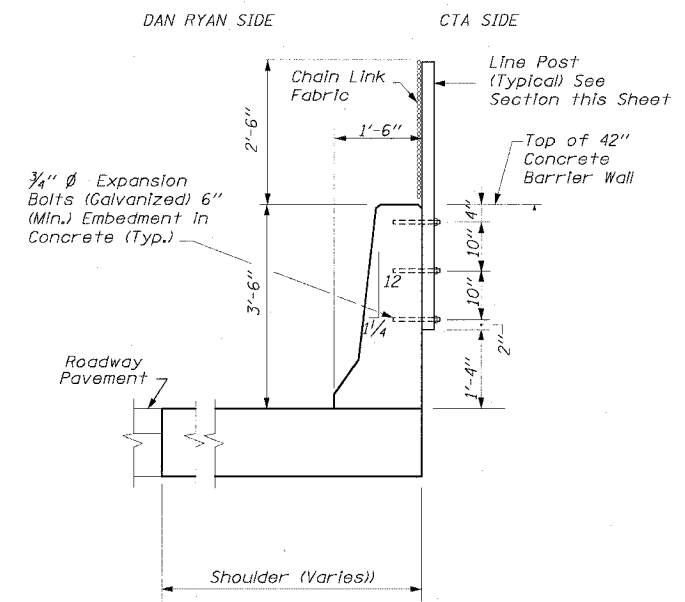
LINE POST SECTION

NOTE:
The Contractor May Use Another C Section as per the Standards of the Illinois Department of Transportation.

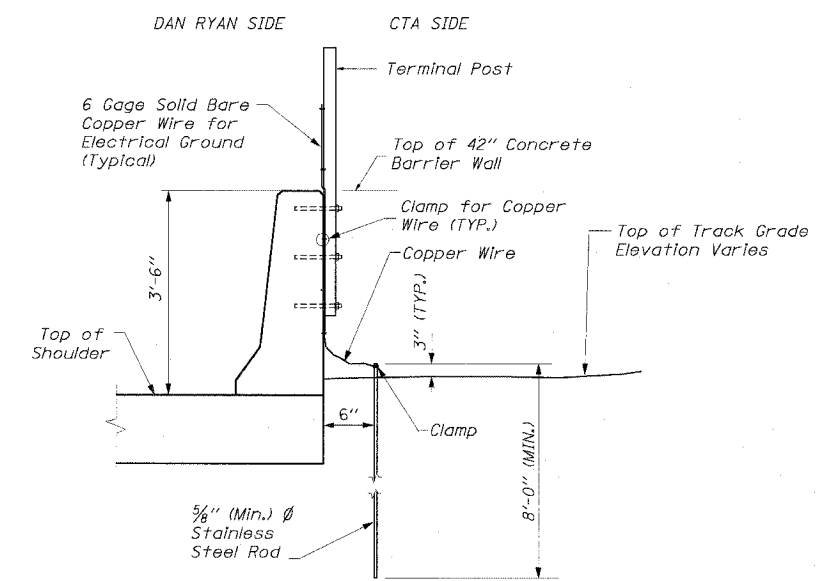


TERMINAL POST SECTION

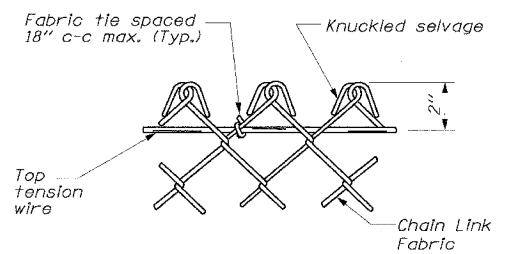
NOTE:
Where the fence meets bridge piers and other vertical structures taller than the fence a maximum gap of 2" clear between the terminal post is to be provided.



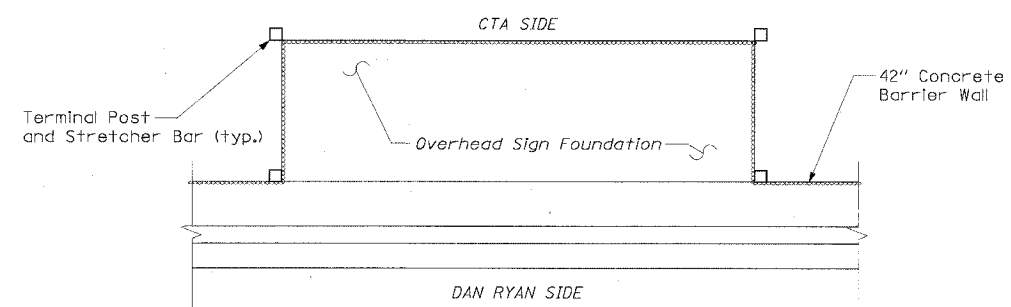
SECTION 1-1



SECTION 2-2
ELECTRICAL GROUND DETAIL



KNUCKLED DETAIL



DETAIL AT OVERHEAD SIGN FOUNDATIONS

Fence, hardware and posts around the overhead sign foundation are paid for as CTA Fence.

REVISIONS		DATE
NAME		

CDT-10

ILLINOIS DEPARTMENT OF TRANSPORTATION
F.A.I. 94/90 (DAN RYAN EXPRESSWAY)
31ST STREET TO 71ST STREET
SB EXPRESS LANE RECONSTRUCTION

CTA FENCE
ELEVATIONS AND DETAILS
SHEET 1 OF 3

SCALE: NONE
DATE: 7/7/05

DRAWN BY: RLK
CHECKED BY: EL

Edwards AND Kelcey
ONE NORTH FRANKLIN
CHICAGO, IL 60606
PHONE: (312) 251-3000
FAX: (312) 251-3015
WEB: WWW.EKCORP.COM