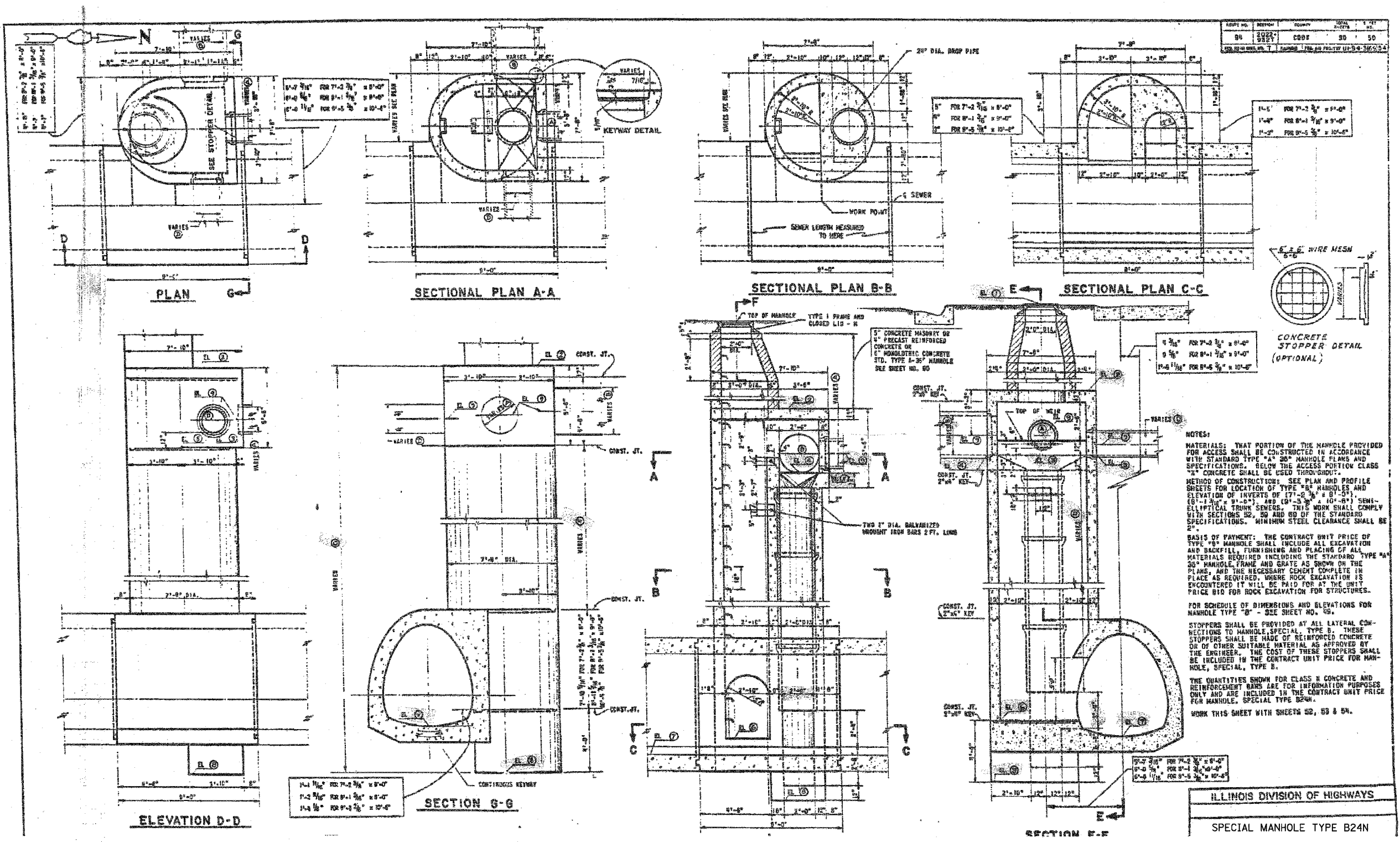


F.A.I.	SECTION	COUNTY	TOTAL SHEETS	SHEET NO.
94/90	*	COOK	598	461
STA.	TO STA.			
FED. ROAD DIST. NO.	ILLINOIS	FED. AID PROJECT		
62302	*1818, ETC, 2324.6-1PR-9			



NOTES:

MATERIALS: THAT PORTION OF THE MANHOLE PROVIDED FOR ACCESS SHALL BE CONSTRUCTED IN ACCORDANCE WITH STANDARD TYPE "A" 26" MANHOLE PLANS AND SPECIFICATIONS. BELOW THE ACCESS PORTION CLASS "B" CONCRETE SHALL BE USED THROUGHOUT.

METHOD OF CONSTRUCTION: SEE PLAN AND PROFILE SHEETS FOR LOCATION OF TYPE "B" MANHOLES AND ELEVATION OF INVERTS OF (7'-0" DIA. x 8'-0") (8'-0" DIA. x 9'-0") AND (9'-0" DIA. x 10'-0") SEMI-ELLIPTICAL TRUNK SEWERS. THIS WORK SHALL COMPLY WITH SECTIONS 82, 83 AND 84 OF THE STANDARD SPECIFICATIONS. MINIMUM STEEL CLEARANCE SHALL BE 2".

BASIS OF PAYMENT: THE CONTRACT UNIT PRICE OF TYPE "B" MANHOLE SHALL INCLUDE ALL EXCAVATION AND BACKFILL, FURNISHING AND PLACING OF ALL MATERIALS REQUIRED INCLUDING THE STANDARD TYPE "A" 26" MANHOLE FRAME AND GRATE AS SHOWN ON THE PLANS, AND THE NECESSARY CEMENT COMPLETE IN PLACE AS REQUIRED, WHERE ROCK EXCAVATION IS ENCOUNTERED IT WILL BE PAID FOR AT THE UNIT PRICE B10 FOR ROCK EXCAVATION FOR STRUCTURES.

FOR SCHEDULE OF DIMENSIONS AND ELEVATIONS FOR MANHOLE TYPE "B" - SEE SHEET NO. 48.

STOPPERS SHALL BE PROVIDED BY ALL LATERAL CONNECTIONS TO MANHOLE, SPECIAL TYPE B. THESE STOPPERS SHALL BE MADE OF REINFORCED CONCRETE OR OF OTHER SUITABLE MATERIAL AS APPROVED BY THE ENGINEER. THE COST OF THESE STOPPERS SHALL BE INCLUDED IN THE CONTRACT UNIT PRICE FOR MANHOLE, SPECIAL TYPE B.

THE QUANTITIES SHOWN FOR CLASS "B" CONCRETE AND REINFORCEMENT BARS ARE FOR INFORMATION PURPOSES ONLY AND ARE INCLUDED IN THE CONTRACT UNIT PRICE FOR MANHOLE, SPECIAL TYPE B24N.

WORK THIS SHEET WITH SHEETS 52, 53 & 54.

ILLINOIS DIVISION OF HIGHWAYS
SPECIAL MANHOLE TYPE B24N

SHEET JC- 9 OF JC-22

FOR INFORMATION ONLY

REVISIONS	
NAME	DATE

ILLINOIS DEPARTMENT OF TRANSPORTATION
F.A.I. 94/90 (DAN RYAN EXPRESSWAY)
31ST STREET TO 71ST STREET
SB EXPRESS LANE RECONSTRUCTION
JUNCTION CHAMBERS
EXISTING DROP MANHOLE PLANS

SCALE: NTS
DATE: 07/07/05
DRAWN BY: BDC
CHECKED BY: BLU

BOWMAN, BARRETT & ASSOCIATES INC.
CONSULTING ENGINEERS
Chicago, Illinois
312.228.0100
www.bbainc.com

6/28/2005 10:02:58 AM