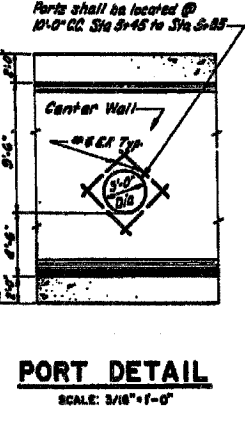
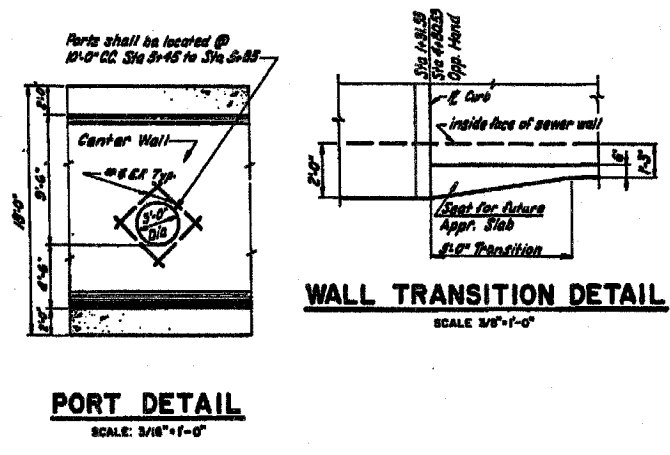
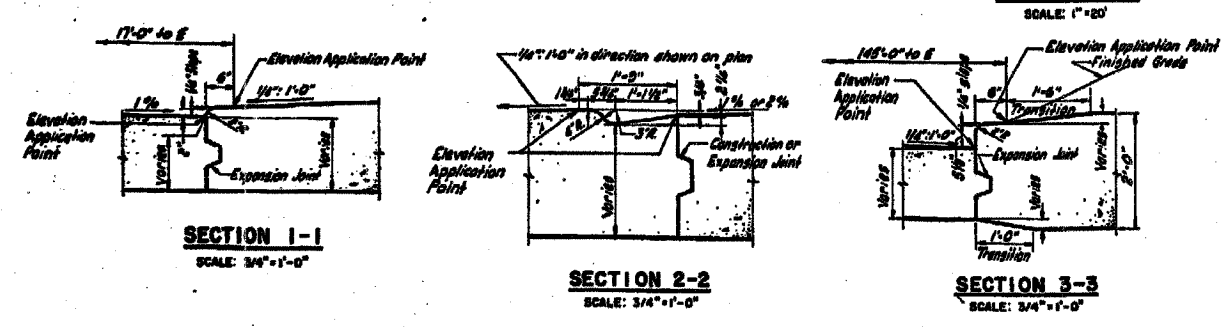
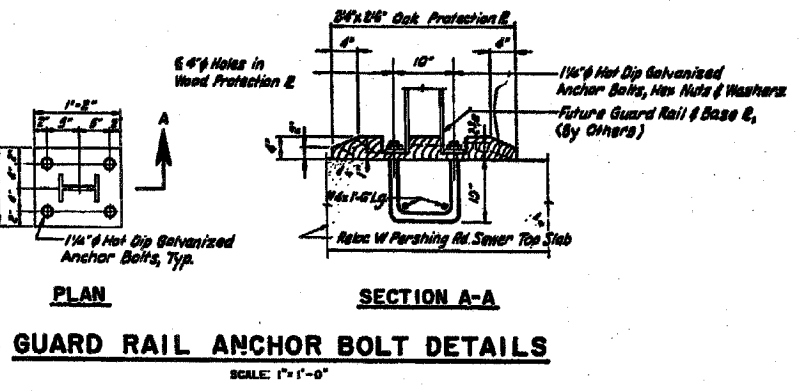
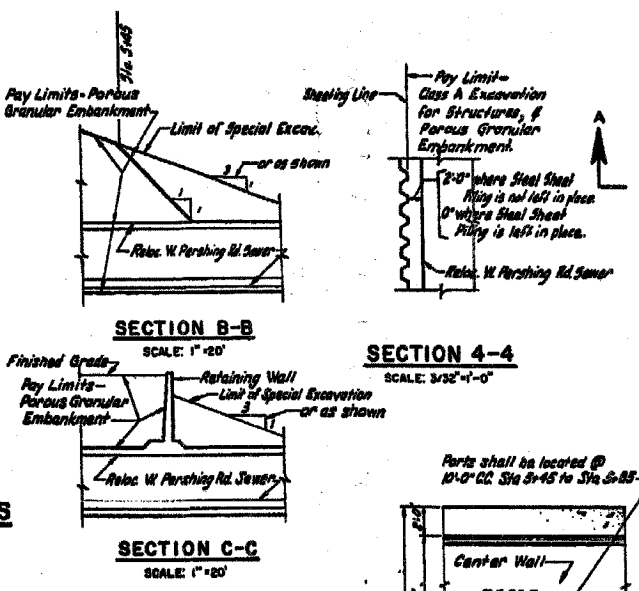
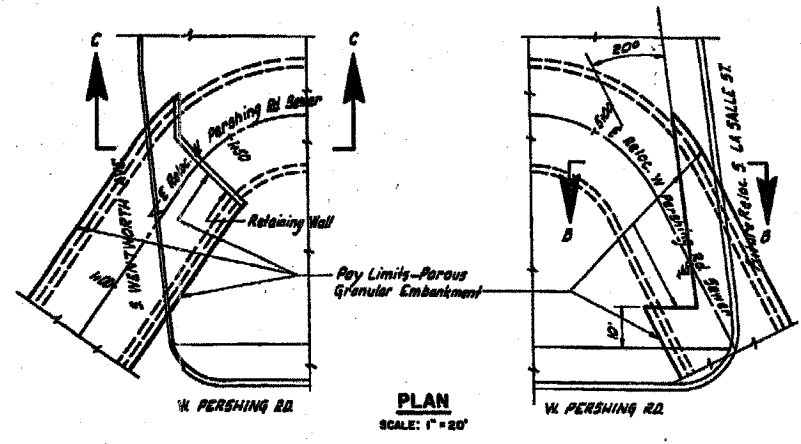
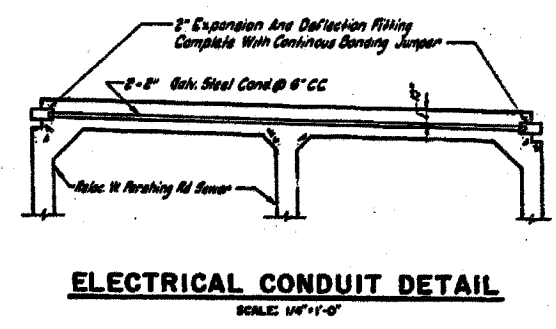
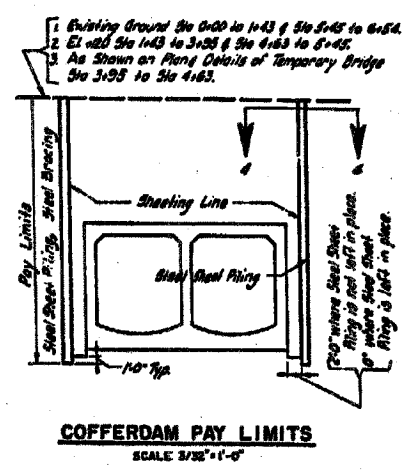
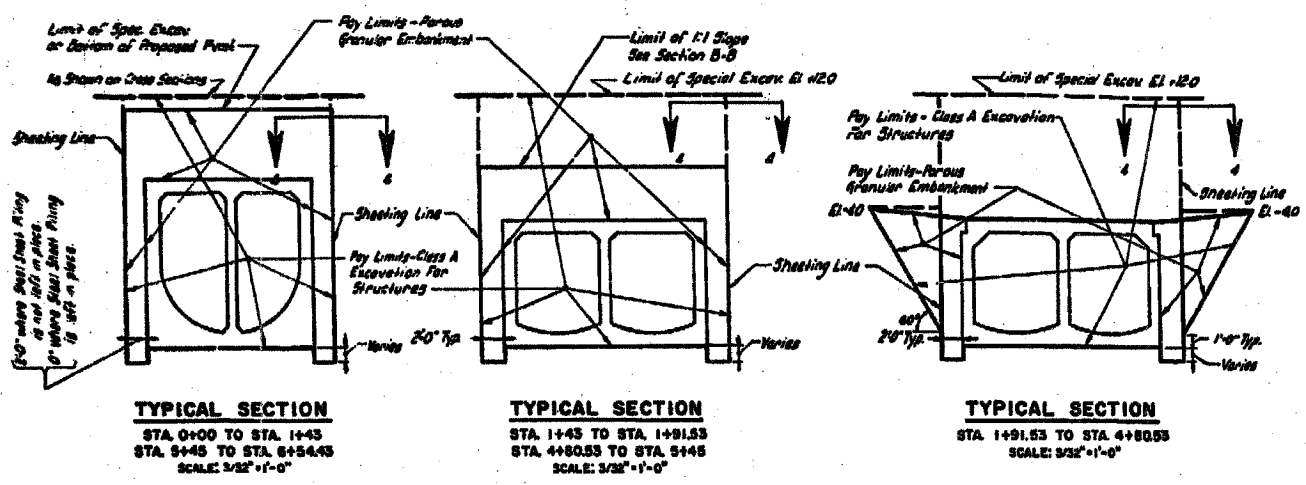


F.A.I.	SECTION	COUNTY	TOTAL SHEETS	SHEET NO.
94/90		COOK	598	487
STA.		TO STA.		
FED. ROAD DIST. NO.		ILLINOIS FED. AID PROJECT		
62302		*1816, ETC, 2324.6-1PIR-9		

ROUTE NO.	SECTION	COUNTY	TOTAL SHEETS	SHEET NO.
F.A. 194	5-2322-48	COOK	54	54
FED. ROAD DIST. NO. 4 ILLINOIS		PROJECT I-55-1120-24		



- NOTES:**
1. For Location of Sections 1-1, 2-2, 3-3, see sheet S-5
 2. For Details of Construction & Expansion Joints, see sheet S-6.
 3. For Location of Electrical Conduit & Guard Rail Anchor Bolts, see sheet S-6.

CITY OF CHICAGO
DEPARTMENT OF PUBLIC WORKS
BUREAU OF ENGINEERING

SOUTH ROUTE SUPERHIGHWAY
SECTION 5-2322-48
W PERSHING ROAD BRIDGE
SEWER MISCELLANEOUS
DETAILS

SHEET CUL-13 OF CUL-14

REVISIONS	
NAME	DATE

ILLINOIS DEPARTMENT OF TRANSPORTATION
F.A.I. 94/90 (DAN RYAN EXPRESSWAY)
31ST STREET TO 71ST STREET
SB EXPRESS LANE RECONSTRUCTION
MWRD CULVERT, N. OF 39TH ST.,
COOK COUNTY, S.N. 016-2625
EXISTING GENERAL DETAILS

SCALE: NTS
DATE: 07/07/05

DRAWN BY: BDC
CHECKED BY: BLU

FOR INFORMATION ONLY

BOWMAN, BARRETT & ASSOCIATES INC.
CONSULTING ENGINEERS
Chicago, Illinois
312.228.0100
www.bbdaire.com

12/28/02 PM
 5/24/2005