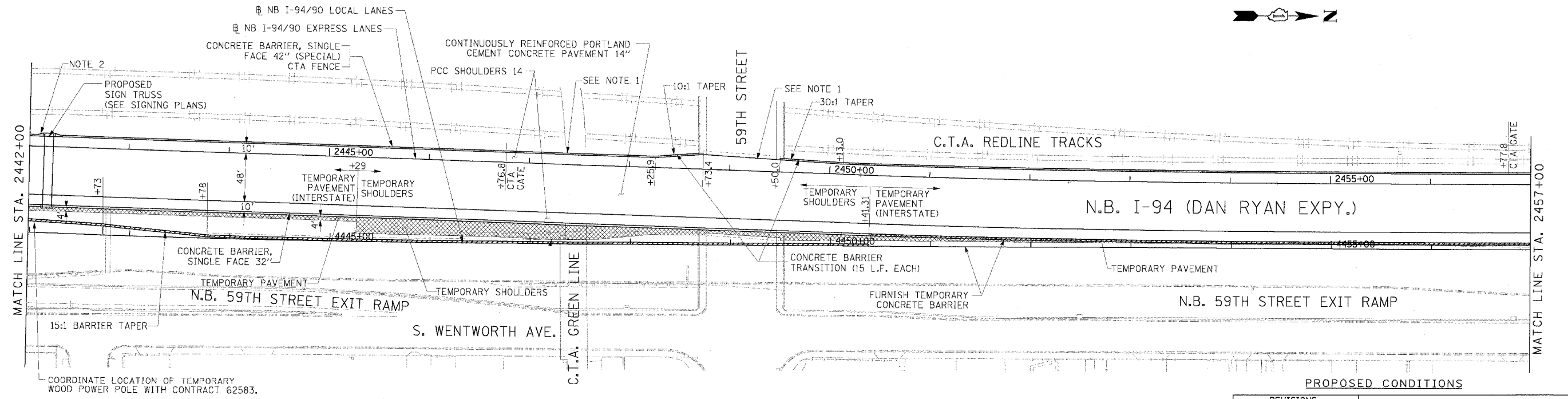


- REMOVAL LEGEND**
- PAVEMENT REMOVAL
 - PAVED SHOULDER REMOVAL
 - COMBINATION CURB AND GUTTER REMOVAL
 - CONCRETE BARRIER OR GUARD RAIL REMOVAL

NOTE:
 1. THE LOCATION OF PAVEMENT CONSTRUCTED IN PREVIOUS CONTRACTS IS BASED OFF OF CONTRACT PLAN DRAWINGS. THE CONTRACTOR MUST VERIFY LIMITS OF PREVIOUS CONSTRUCTION IN THE FIELD.

EXISTING CONDITIONS & REMOVALS



- NOTES:**
- BRIDGE OVER EXPRESS LANES OMITTED FOR CLARITY.
 - ON THE CTA SIDE OF THE BARRIER, TRANSITION THE WIDTH OF BARRIER AT A 3:1 RATE TO MEET THE BACK OF SIGN FOUNDATION. PAID FOR AS CONCRETE BARRIER TRANSITION (10 LF).

- LEGEND**
- TEMPORARY PAVEMENT (INTERSTATE)/TEMPORARY SHOULDER
 - TEMPORARY CONCRETE BARRIER

STATIONING

***.## STATION PROVIDED FROM THE NB I-90/94 EXPRESS LANES

(+##.##) STATION PROVIDED FROM THE NB I-90/94 LOCAL LANES

[###.##] STATION PROVIDED FROM THE SLIP RAMP NB

REVISIONS	
NAME	DATE

ILLINOIS DEPARTMENT OF TRANSPORTATION
 F.A.I. 94/90 (DAN RYAN EXPRESSWAY)
 31ST STREET TO 71ST STREET
 NB EXPRESS LANE RECONSTRUCTION
 EXISTING AND PROPOSED PLAN
 NORTHBOUND STA. 2442+00 TO STA. 2457+00

SCALE: 1"=50'
 DATE: 7/7/05

DRAWN BY: TAI
 CHECKED BY: PJM

Edwards AND Kelcey

ONE NORTH FRANKLIN
 CHICAGO, IL 60606
 PHONE: (312) 251-3000
 FAX: (312) 251-3015
 WEB: WWW.EKCORP.COM

P:\030019\035\Com 14815\CADD\N\94\940628.dwg 06/24/2005 10:56:05 AM