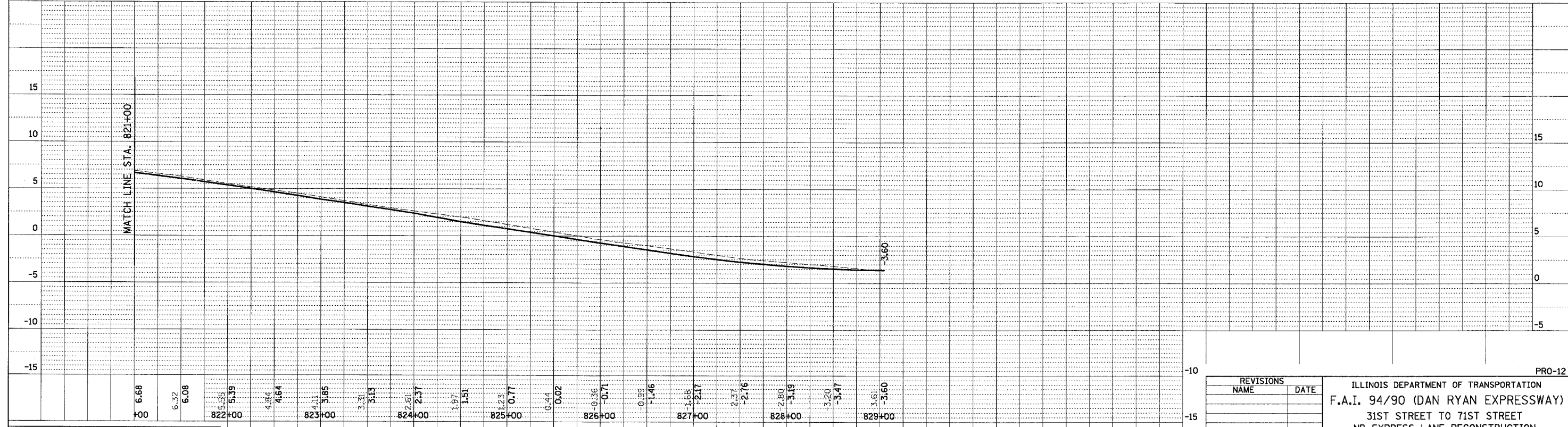
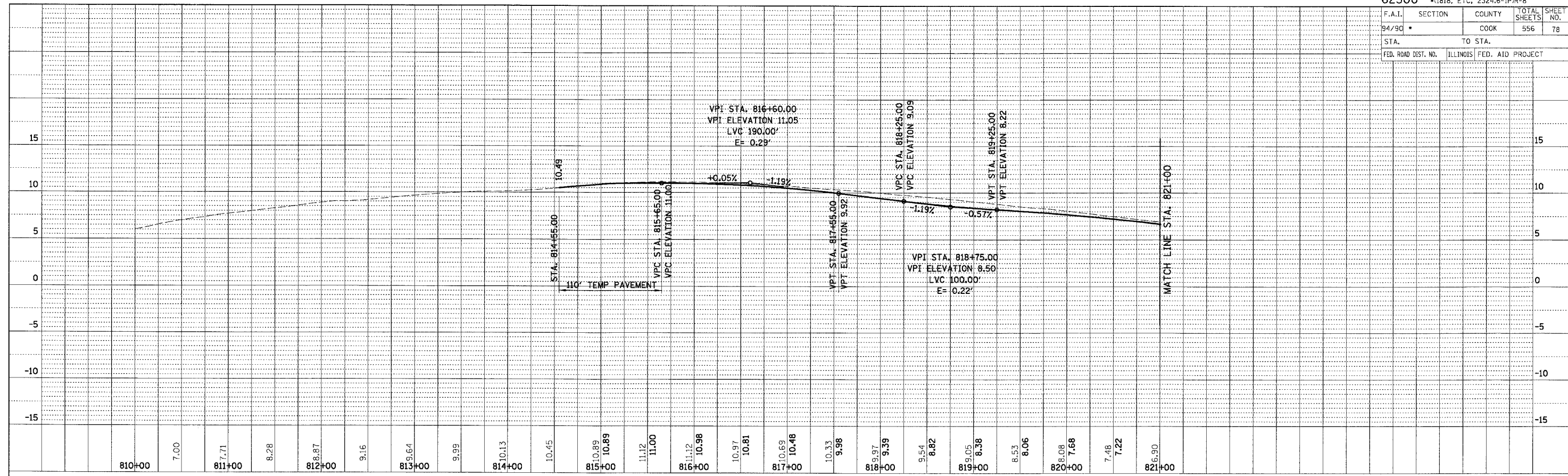


F.A.I.	SECTION	COUNTY	TOTAL SHEETS	SHEET NO.
94/90	*	COOK	556	78
STA.		TO STA.		
FED. ROAD DIST. NO.	ILLINOIS	FED. AID PROJECT		

PLAN	DESIGNED	BY	DATE
	PLOTTED		
	ALIGNED		
	CHECKED		
	NO. _____		

PLAN	DESIGNED	BY	DATE
	PLOTTED		
	ALIGNED		
	CHECKED		
	NO. _____		



BOWMAN, BARRETT & ASSOCIATES INC
 CONSULTING ENGINEERS
 Chicago, Illinois
 312.228.0100
 www.bbainc.com



REVISIONS	NAME	DATE

ILLINOIS DEPARTMENT OF TRANSPORTATION
 F.A.I. 94/90 (DAN RYAN EXPRESSWAY)
 31ST STREET TO 71ST STREET
 NB EXPRESS LANE RECONSTRUCTION
 EXISTING AND PROPOSED PROFILE
 NB SLIP RAMP FROM LOCAL TO EXPRESS LANES

SCALE: 1"=25' VERT
 1"=50' HORIZ
 DATE: 07/07/05

DRAWN BY: RA
 CHECKED BY: JDC