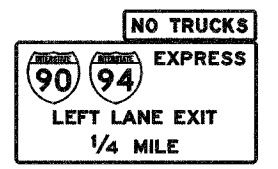
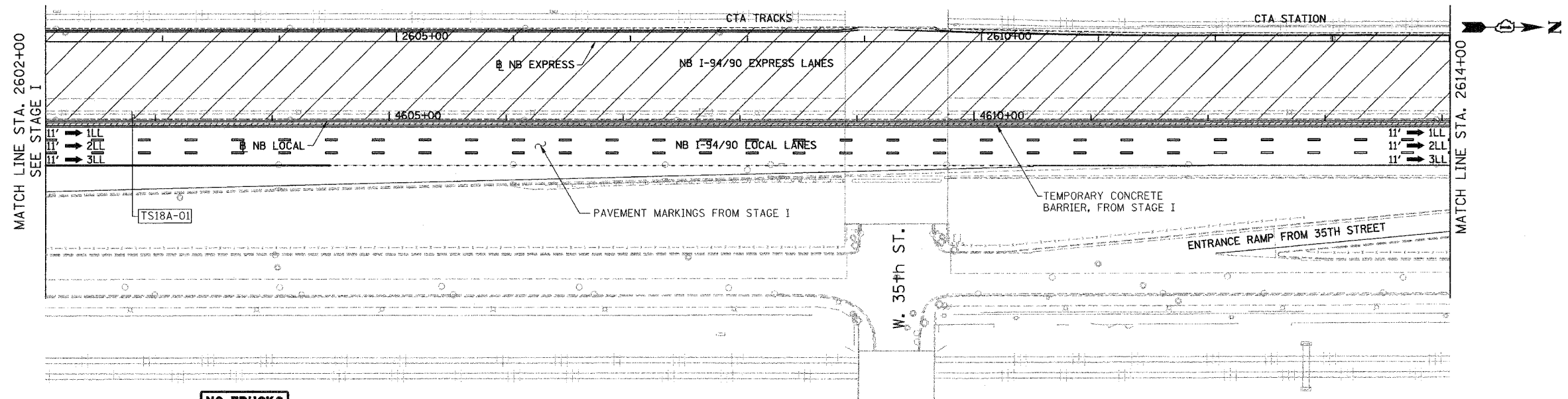


F.A.I.	SECTION	COUNTY	TOTAL SHEETS	SHEET NO.
94/90	*	COOK	556	98A
STA. 2602+00		TO STA. 2626+00		
FED. ROAD DIST. NO.	ILLINOIS	FED. AID PROJECT		
62300	*(1818, ETC. 2324.6-1PIR-8			

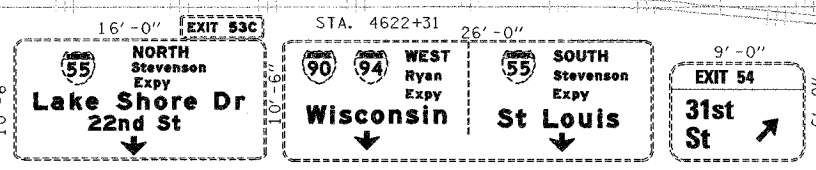
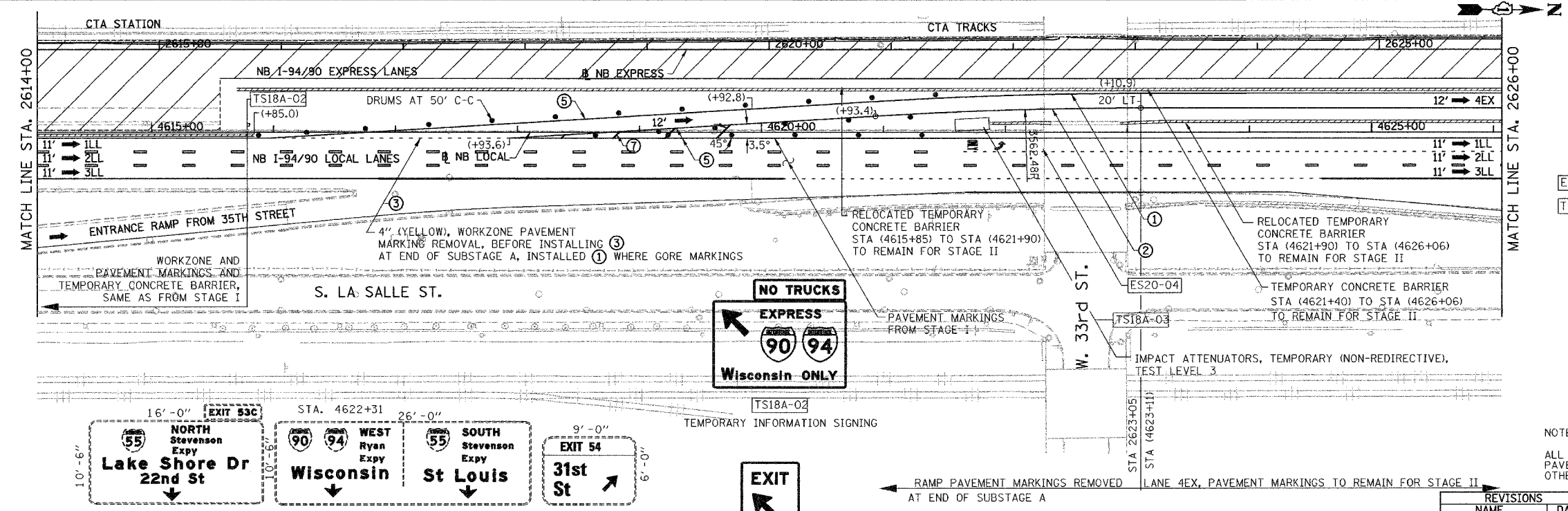


TS18A-01
TEMPORARY INFORMATION SIGNING

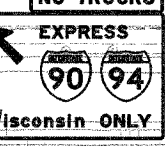
CONTRACT 62300 SUBSTAGE A SHOULD BE READY TO OPEN TO TRAFFIC AT THE SAME TIME THAT CONTRACT 62580 MAINTENANCE OF TRAFFIC, STAGE IIA IS OPEN TO TRAFFIC. CONTRACT 62300 SHOULD COORDINATE WITH CONTRACT 62580.

LEGEND

- WORK ZONE
- TEMPORARY PAVEMENT
- ILL TRAFFIC LANE & DIRECTION OF TRAFFIC
- DRUM OR BARRICADE TYPE II WITH STEADY BURN LIGHT
- IMPACT ATTENUATORS, TEMPORARY (NON-REDIRECTIVE), TEST LEVEL 3
- BARRICADE TYPE III
- TEMPORARY CONCRETE BARRIER
- ① LINE 4" (YELLOW EDGE LINE)
- ② LINE 4" (WHITE EDGE LINE)
- ③ LINE 4" (SKIP DASH, 6' SKIP - 2' DASH, WHITE)
- ④ LINE 5" (SKIP DASH, 30' SKIP - 10' DASH, WHITE)
- ⑤ LINE 8" (WHITE GORE LINE)
- ⑥ LINE 8" (SKIP DASH, 12' SKIP - 3' DASH, WHITE)
- ⑦ LINE 12" (DIAGONAL, 30' C-C)
- ⑧ LINE 12" (DIAGONAL, 50' C-C)
- ⑨ LETTERS AND SYMBOLS
- ESx-xx EXISTING SIGNS
- TSx-xx TEMPORARY SIGNS



EXISTING SIGN TO REMAIN UNDER THIS CONTRACT. CONTRACT 62300 NEEDS TO COORDINATE WITH CONTRACT 62580 MAINTENANCE OF TRAFFIC



TS18A-02
TEMPORARY INFORMATION SIGNING

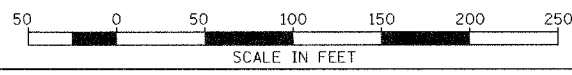


TS18A-03
TEMPORARY INFORMATION SIGNING

NOTE:
ALL PAVEMENT MARKINGS ON THIS SHEET WILL BE PAVEMENT MARKING TAPE, TYPE III, UNLESS OTHERWISE NOTED.

MOT-18A

BOWMAN, BARRETT & ASSOCIATES INC.
CONSULTING ENGINEERS
Chicago, Illinois
312.228.0100
www.bbainc.com



STATIONING
+###.### STATION PROVIDED FROM THE NB I-90/94 EXPRESS LANES
(+##.###) STATION PROVIDED FROM THE NB I-90/94 LOCAL LANES
[+###.###] STATION PROVIDED FROM THE SLIP RAMP

REVISIONS	
NAME	DATE
ADDENDUM 1	8/26/05

ILLINOIS DEPARTMENT OF TRANSPORTATION
F.A.I. 94/90 (DAN RYAN EXPRESSWAY)
31ST STREET TO 71ST STREET
NB EXPRESS LANE RECONSTRUCTION
MAINTENANCE OF TRAFFIC PLAN SUBSTAGE A
NORTHBOUND STA. 2602+00 TO STA. 2626+00
SCALE: 1"=50'
DATE: 07/07/05
DRAWN BY: RA
CHECKED BY: RS

8/31/2005 2:42:38 PM