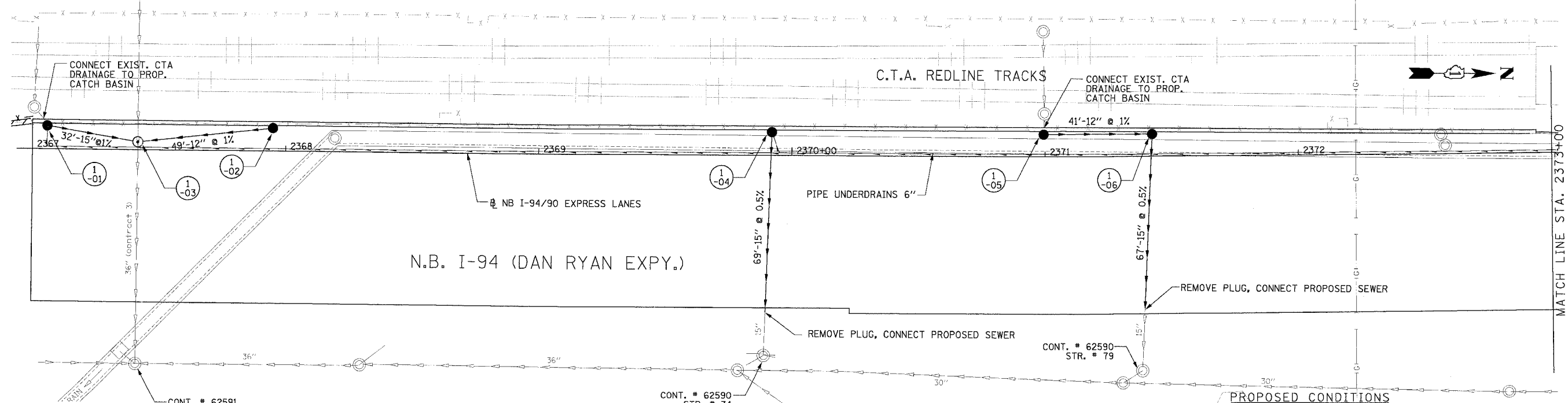


NOTE:
 1. THE LOCATION OF DRAINAGE STRUCTURES AND PIPES CONSTRUCTED IN PREVIOUS CONTRACTS IS BASED OFF OF CONTRACT PLAN DRAWINGS. THE CONTRACTOR MUST VERIFY LIMITS OF PREVIOUS CONSTRUCTION IN THE FIELD.

EXISTING CONDITIONS AND REMOVALS



PROPOSED CONDITIONS

Edwards and Kelcey
 ONE NORTH FRANKLIN
 CHICAGO, IL 60606
 PHONE: (312) 251-3000
 FAX: (312) 251-3015
 WEB: WWW.EKCORP.COM

REVISIONS	
NAME	DATE

ILLINOIS DEPARTMENT OF TRANSPORTATION
 F.A.I. 94/90 (DAN RYAN EXPRESSWAY)
 31ST STREET TO 71ST STREET
 NB EXPRESS LANE RECONSTRUCTION
 DRAINAGE AND UTILITIES PLAN
 NORTHBOUND STA. 2367+00 TO STA. 2373+00
 SCALE: 0' 10' 20' 30' 40'
 DATE: 7/7/05
 DRAWN BY: LPN
 CHECKED BY: PJM

P:\03\09\03\05\Com 148\15\CADD\DWG\4001.dwg
 06/24/2005 03:18:57 PM