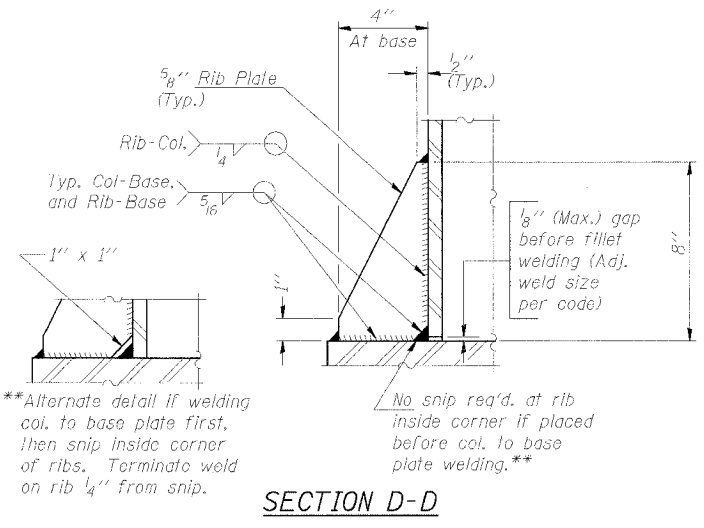


**DETAIL B**

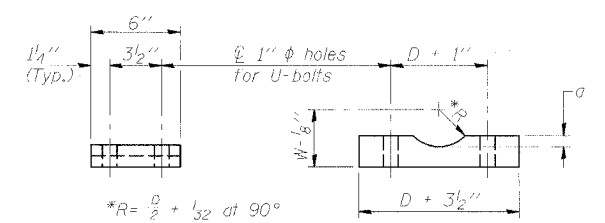
Ribs shall be cut to fit slope of pipe.

Stainless Steel Standard Grade Wire Cloth, 3" wide, 1/4" maximum opening with a minimum wire diameter of AWG. No. 16 with a minimum 2" lap. Secure to base plate after erection with 3/4" stainless steel banding.



**SECTION D-D**

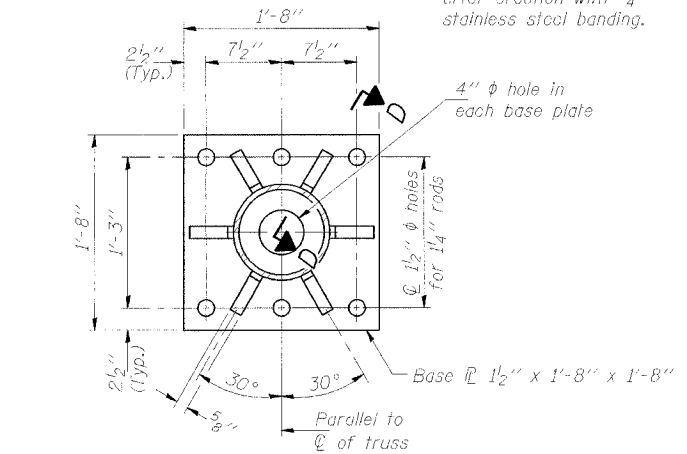
\*\*Alternate detail if welding col. to base plate first, then snip inside corner of ribs. Terminate weld on rib 1/4" from snip.



**SADDLE SHIM DETAIL**

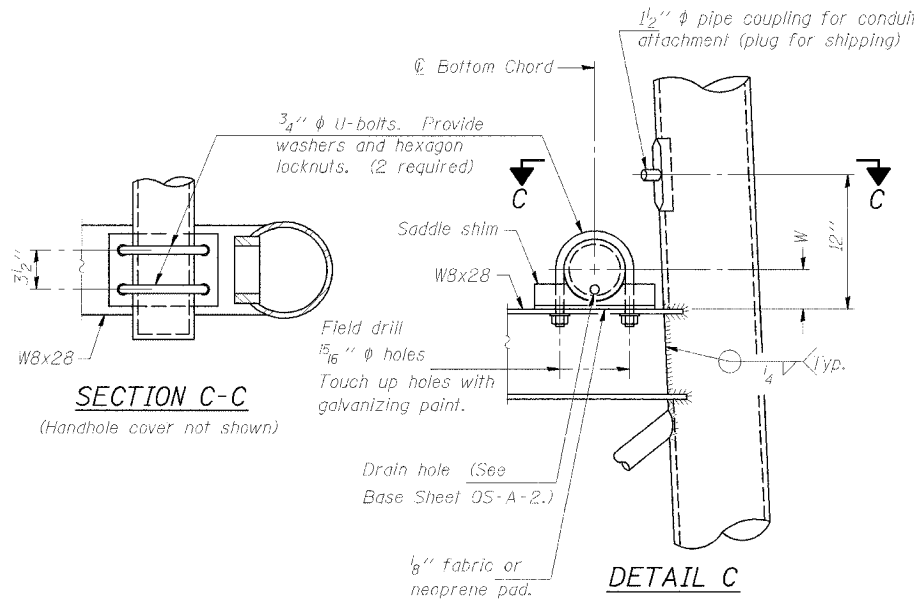
ASTM B26 Alloy 356-F or ASTM B209 Alloy 6061-T651 (4 required per sign truss)

Truss Chord Nominal Dia.	a
5"	3/4"
5 1/2"	13/16"
6"	7/8"
6 1/2"	15/16"
7"	1"



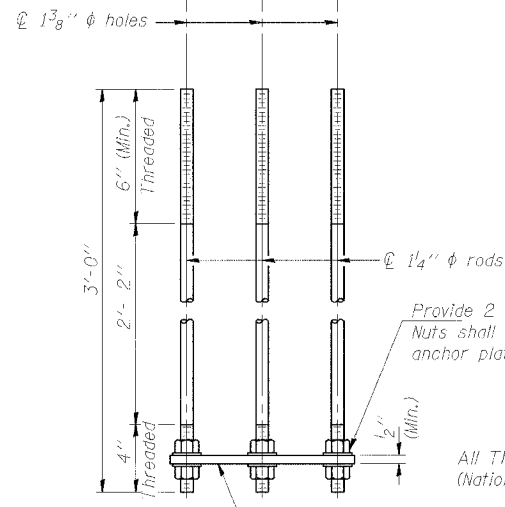
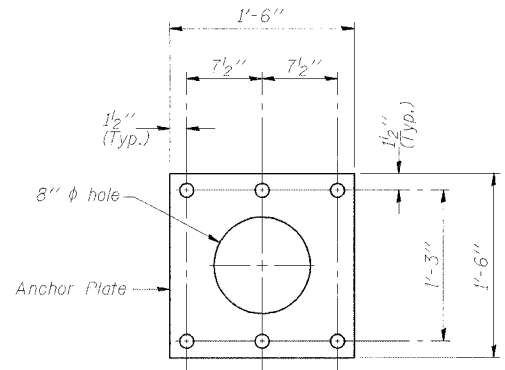
**SECTION B-B**

NUMBER	REVISION	DATE
1	ADDENDUM 1	8/12/05
2	ADDENDUM 2	9/16/05



**SECTION C-C**

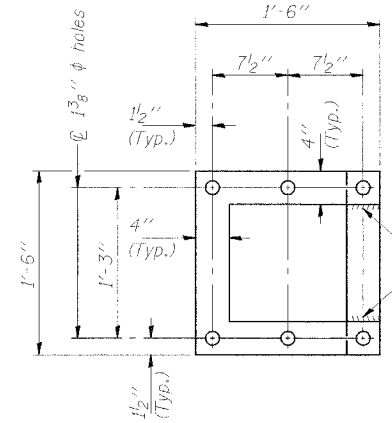
**DETAIL C**



**ANCHOR ROD DETAIL**  
Spread Footing Foundation

Anchor rods shall conform to AASHTO M314 Grade 36 or 50 and meet Charpy V-Notch (CVN) energy of 15 lb.-ft. at 40° F. Galvanize upper 12" per AASHTO M232. No welding shall be permitted on rods.

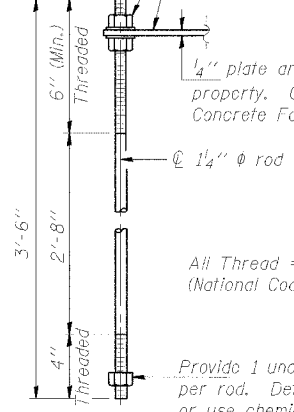
**10"  $\phi$  PIPE SUPPORT FRAME DETAILS**



**POSITIONING PLATE(S)**

Optionally may use four (4) separate bars. Weld to maintain perpendicularity.

At each location, provide 1/4" thick positioning plate(s) and six (6) additional nuts to be used with leveling nuts to maintain anchor bolts position during concrete placement.



**ANCHOR ROD DETAIL**  
Drilled Shaft Foundation

**OVERHEAD SIGN STRUCTURES SUPPORT FRAME DETAILS ALUMINUM TRUSS**

ILLINOIS DEPARTMENT OF TRANSPORTATION  
F.A.I. 94/90 (DAN RYAN EXPRESSWAY)  
31st STREET TO 71st STREET  
NB EXPRESS LANE RECONSTRUCTION  
OVERHEAD SIGN STRUCTURES

DESIGNED - RLK	EXAMINED - 20
CHECKED - JAI	PASSED - ENGINEER OF STRUCTURAL SERVICES
DRAWN -	PASSED - ENGINEER OF BRIDGES AND STRUCTURES
CHECKED - PJM	