

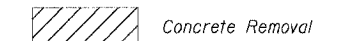
STATE OF ILLINOIS
DEPARTMENT OF TRANSPORTATION

F.A.I. RTE.	SECTION	COUNTY	TOTAL SHEETS	SHEET NO.
90/94	*	COOK	556	376
STA.	TO STA.			
FED. ROAD DIST. NO. 1	ILLINOIS	FED. AID PROJECT		
* (1818, ETC, 2324.6-1)PR-8			62300	

**BILL OF MATERIAL
FOR ONE TRANSITION**

Bar	No.	Size	Length	Shape
d1(E)	17	#4	6'-5"	—
d6(E)	50	#4	6'-0"	—
h6(E)	112	#4	1'-9"	—
h7(E)	8	#4	29'-0"	—
h8(E)	16	#4	21'-5"	—
Item	Unit	Quantity		
Reinforcement Bars, Epoxy Coated	Pound	788		
Concrete Superstructure	Cu. Yd.	18.0		
Protective Coat	Sq. Yd.	57		
Concrete Removal	Cu. Yd.	1.1		

LEGEND:



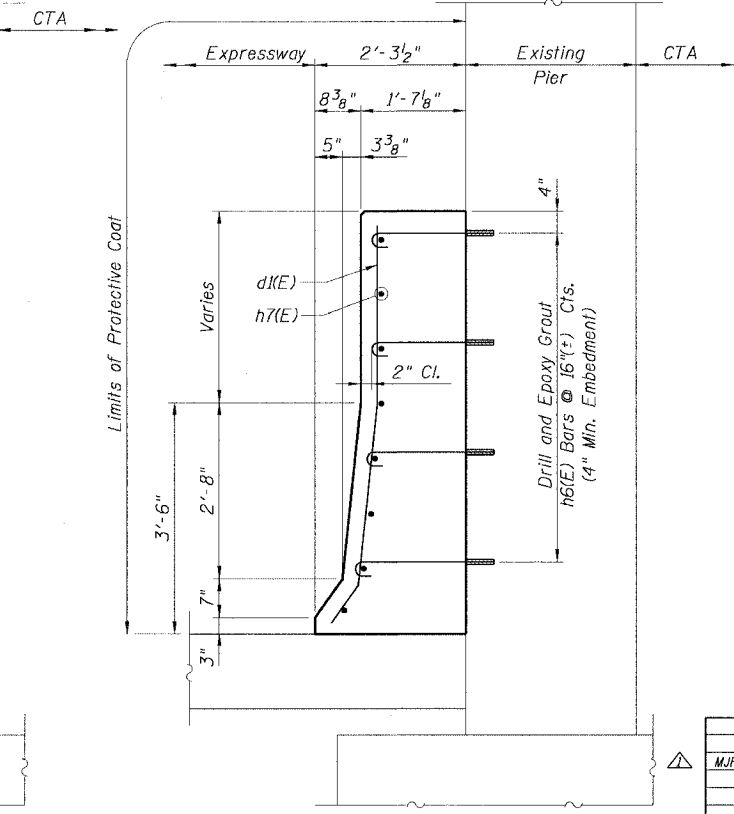
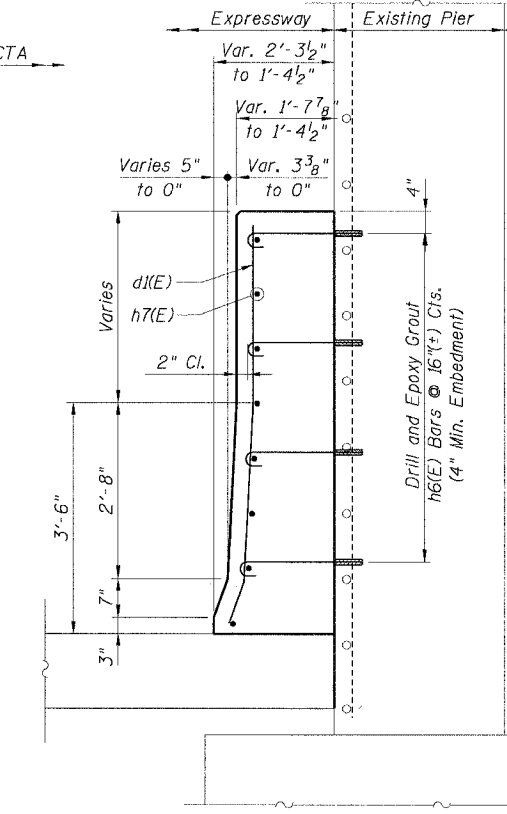
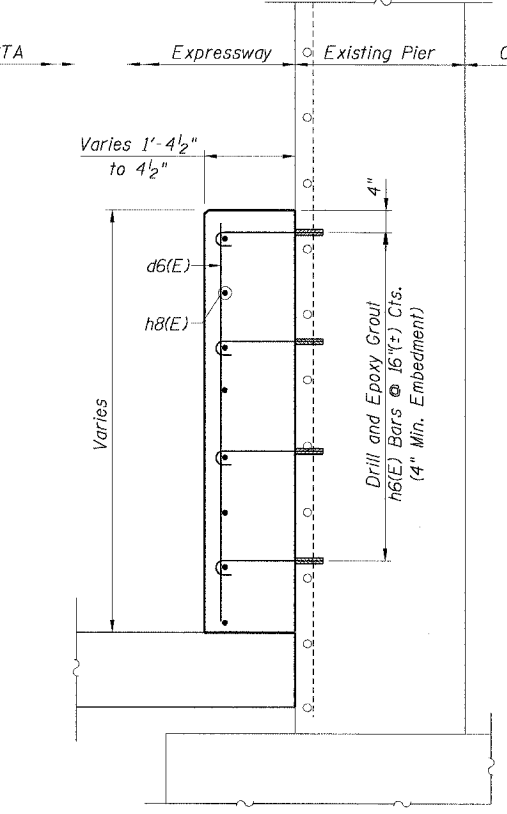
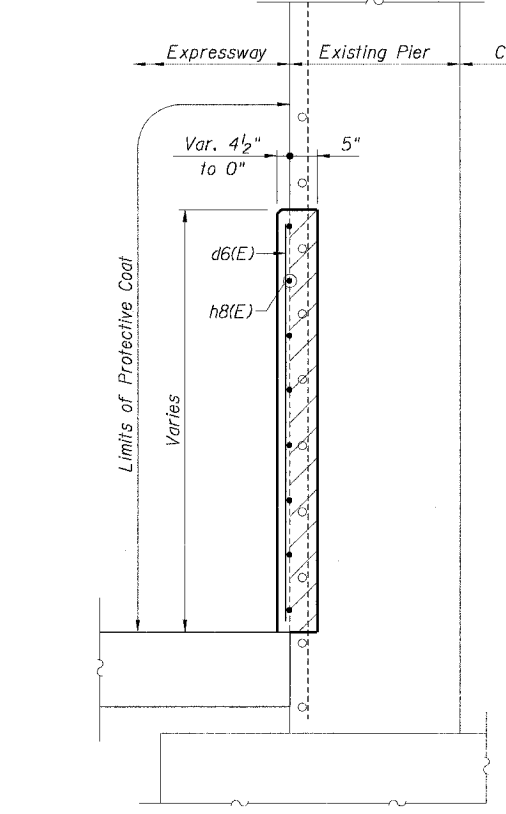
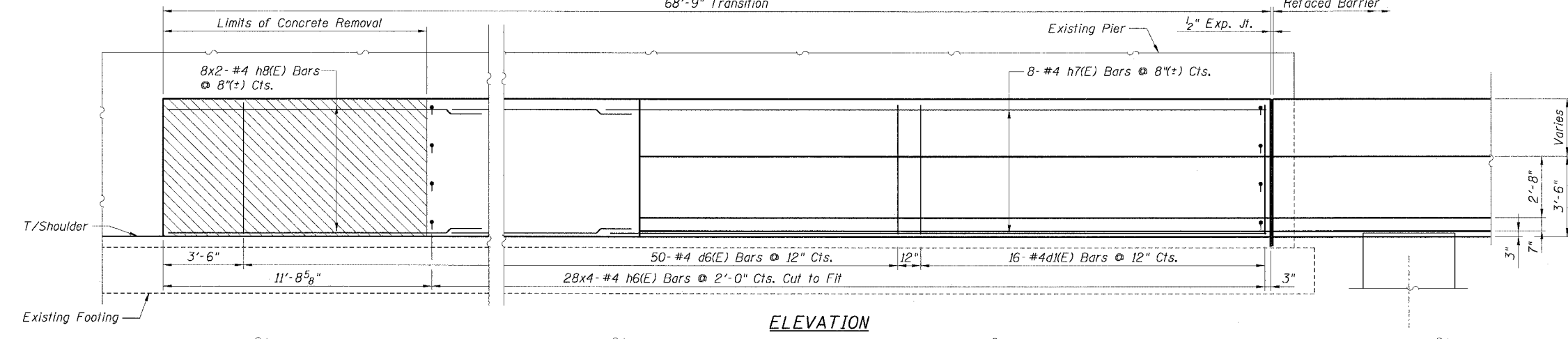
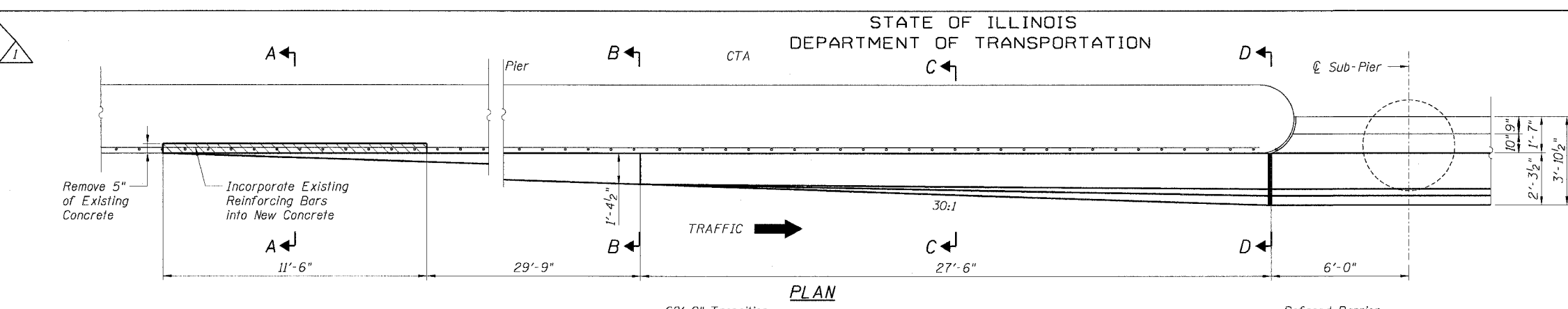
NOTES:

- Drilling and grouting of #4 h2(E) and h6(E) bars shall be in accordance with Section 584 of the Standard Specifications.
- The cost of drilling holes, furnishing and placing Epoxy Grout and setting h2(E) and h6(E) bars shall be included in the cost per cubic yard for Concrete Superstructure.
- Exposed existing reinforcement bars shall remain in place and be blast cleaned to gray metal. Reinforcement bars that have been cut or have lost 25% or more of their original cross sectional area shall be supplemented by new epoxy coated reinforcement bars.
- The cost of supplementing and cleaning existing reinforcement bars shall be included in the cost per cubic yard for Concrete Removal.
- For Refaced Barrier Wall Details see Sheets B2 and B3.
- For locations of Transition, see Roadway Plans.

Sheet B8 of 16

REVISIONS	
NAME	DATE
MJP	8-12-05

ILLINOIS DEPARTMENT OF TRANSPORTATION
F.A.I. 90/94 (DAN RYAN EXPRESSWAY)
71ST STREET TO 31ST STREET (NB EXPRESS LANES)
EXISTING BARRIER WALL MODIFICATIONS
AT CTA STATIONS
PROPOSED T/S SHOULDER BELOW EXISTING
REFACED BARRIER TO PIER
TRANSITION DETAILS (TAPER)
SCALE: None DRAWN BY: CHD
DATE: July 7, 2005 CHECKED BY: RDP



CTE | AECOM