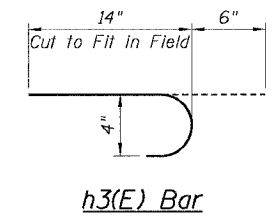
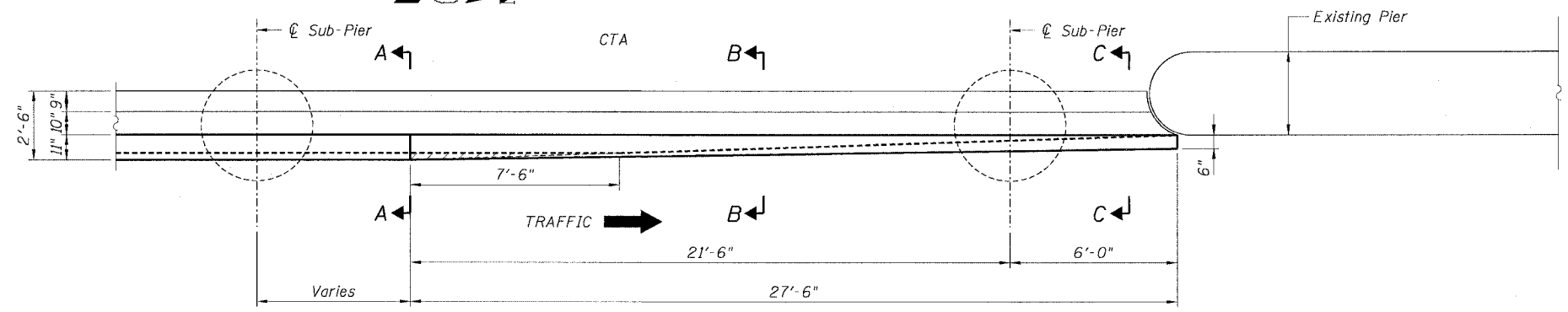


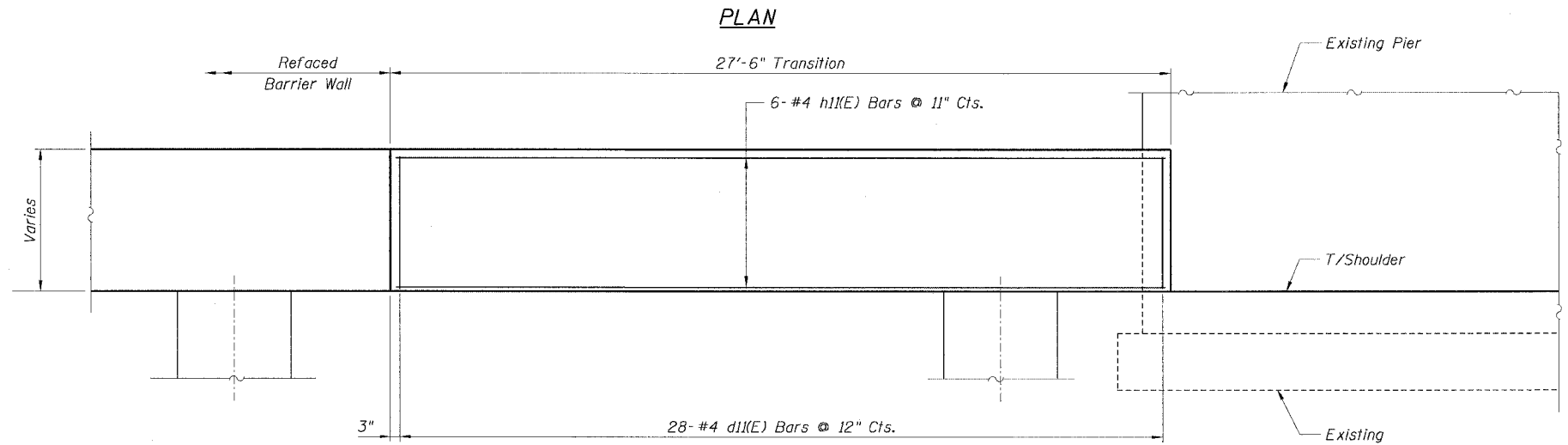
STATE OF ILLINOIS  
DEPARTMENT OF TRANSPORTATION

F.A.I. RTE.	SECTION	COUNTY	TOTAL SHEETS	SHEET NO.
90/94	*	COOK	556	381
STA.	TO STA.			
FED. ROAD DIST. NO. 1		ILLINOIS	FED. AID PROJECT	
* (1818, ETC, 2324.6-1PIR-8		62300		

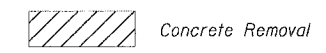


**BILL OF MATERIAL  
FOR ONE TRANSITION**

Bar	No.	Size	Length	Shape
d1(E)	28	#4	4'-8"	—
h3(E)	42	#4	1'-8"	U
h1(E)	6	#4	24'-8"	—
Item		Unit	Quantity	
Reinforcement Bars, Epoxy Coated		Pound	233	
Concrete Superstructure		Cu. Yd.	3.2	
Protective Coat		Sq. Yd.	20	
Concrete Removal		Cu. Yd.	0.1	

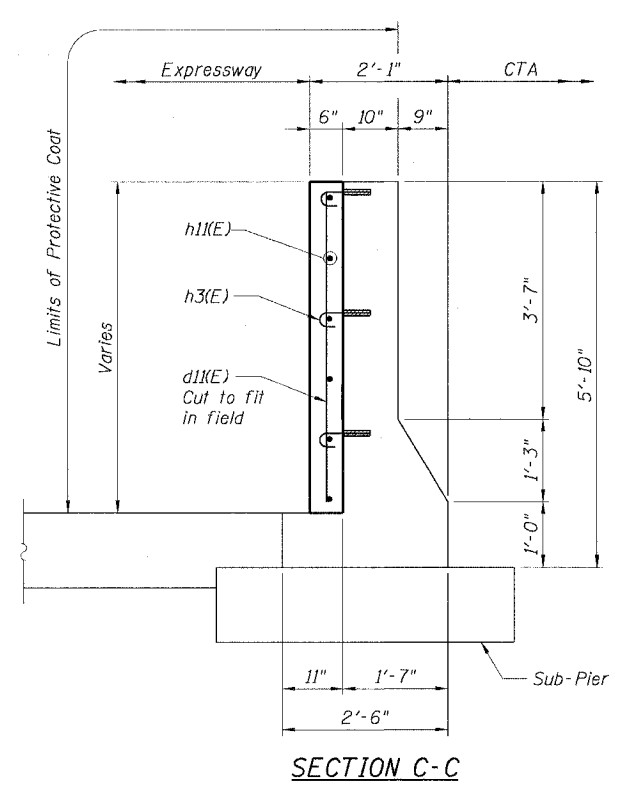
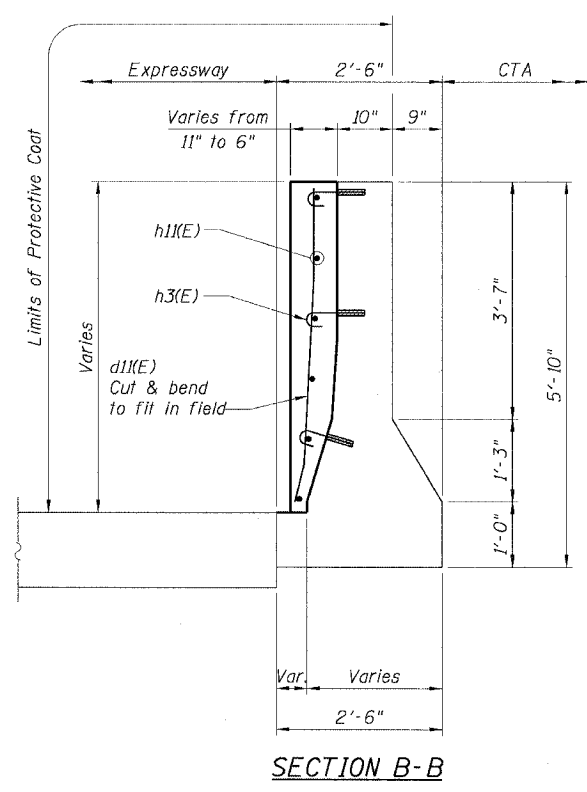
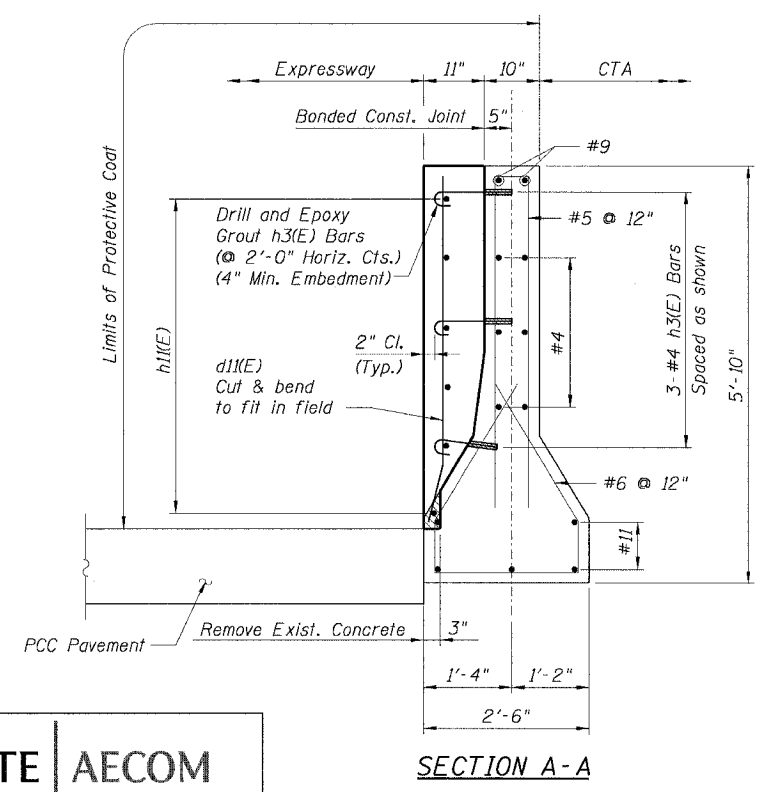


**LEGEND:**



**NOTES:**

1. Drilling and grouting of #4 h3(E) bars shall be in accordance with Section 584 of the Standard Specifications.
2. The cost of drilling holes, furnishing and placing Epoxy Grout and setting #4 h3(E) bars shall be included in the cost per cubic yard for Concrete Superstructure.
3. Provide joints in facing to match those in the existing barrier. See Sheet B7 for details.
4. For Soldier Pile and Lagging Retention System see Sheets B1, B4 and B5.
5. For Refaced Barrier Wall Details, see Sheet B7.
6. For Existing Concrete Repair Details, see Sheet B3.
7. For Facing Details at Existing Light Pole Foundation, see Sheet B5.
8. For locations of Transition, see Roadway Plans.



CTE | AECOM

REVISIONS	
NAME	DATE
MJP	8-12-05

Sheet B13 of 16  
ILLINOIS DEPARTMENT OF TRANSPORTATION  
F.A.I. 90/94 (DAN RYAN EXPRESSWAY)  
EXISTING BARRIER WALL MODIFICATIONS  
AT CTA STATIONS  
FOR 69TH ST. STATION (NB)  
VERT. REFACED BARRIER TO PIER  
TRANSITION DETAILS (NO TAPER)  
SCALE: None DRAWN BY: CHD  
DATE: July 7, 2005 CHECKED BY: RDP