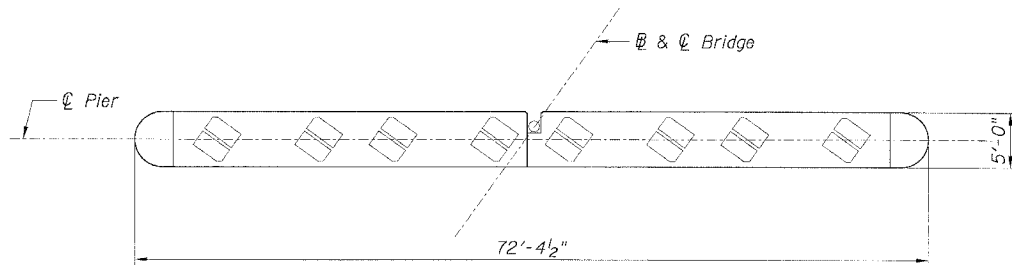
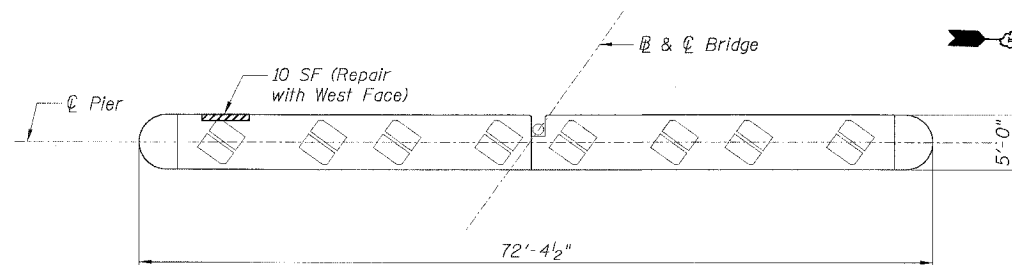


STATE OF ILLINOIS
DEPARTMENT OF TRANSPORTATION

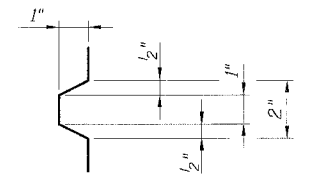
F.A.I. RTE.	SECTION	COUNTY	TOTAL SHEETS	SHEET NO.
90/94		COOK	556	451
STA.	TO STA.			
FED. ROAD DIST. NO. 1	ILLINOIS FED. AID PROJECT			
• (1818, ETC, 2324.6-1PIR-8			62300	



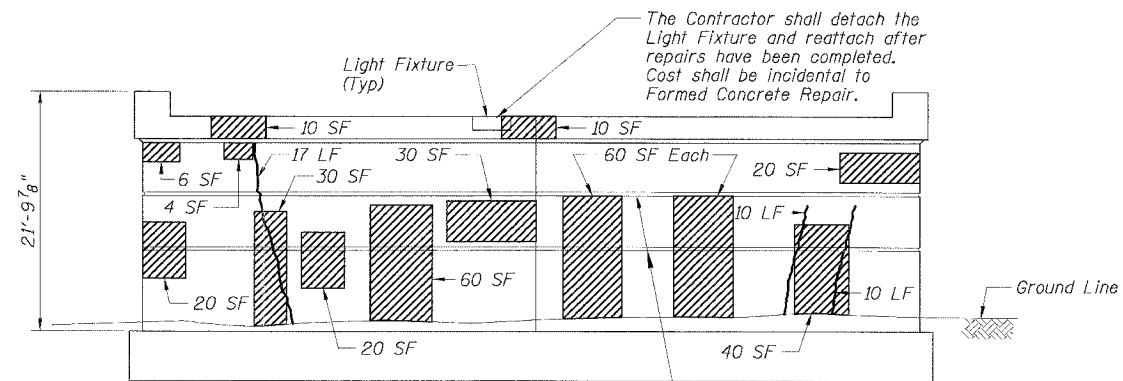
PLAN
PIER 3
(S.N. 016-0142)



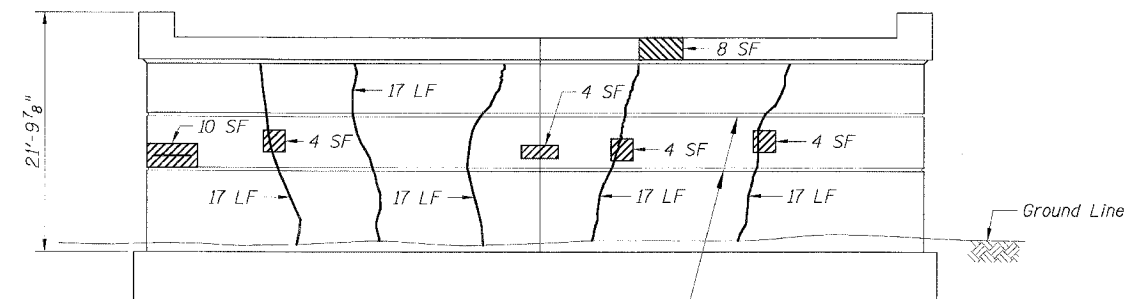
PLAN
PIER 4
(S.N. 016-0142)



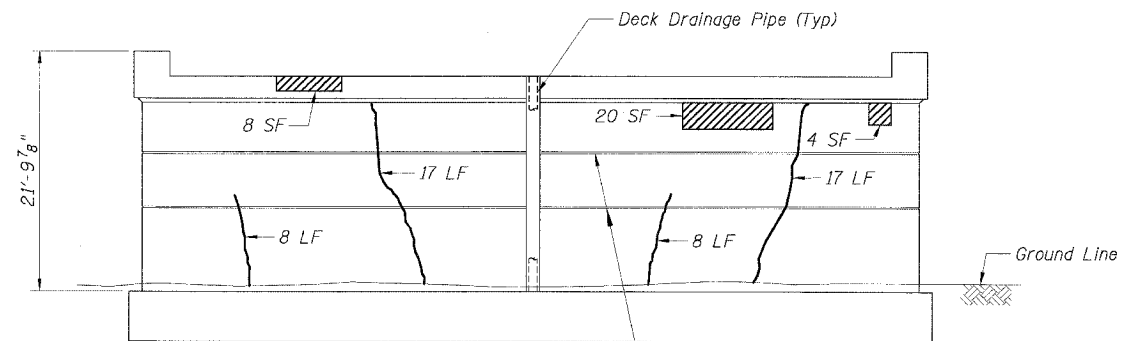
DETAIL OF
RUSTICATION



ELEVATION
PIER 3 - EAST FACE
(S.N. 016-0142)



ELEVATION
PIER 4 - EAST FACE
(S.N. 016-0142)



ELEVATION
PIER 3 - WEST FACE
(S.N. 016-0142)

LEGEND

- Area of Formed Concrete (Depth Equal to or Less than 5")
- Area of Formed Concrete Repair (Depth Greater than 5")
- Epoxy Crack Sealing

BILL OF MATERIAL				
Item	Unit	Quantity		
		Pier 3		Pier 4
		East Face	West Face	East Face
Formed Concrete Repair (Depth Equal to or Less Than 5")	Sq Ft	370	32	24
Formed Concrete Repair (Depth Greater Than 5")	Sq Ft			10
Epoxy Crack Sealing	LF	37	50	85

REVISIONS	
NAME	DATE

Sheet S5 of 5
ILLINOIS DEPARTMENT OF TRANSPORTATION
F.A.I. 90/94 (DAN RYAN EXPRESSWAY)
PIERS 3 & 4 - PLAN AND ELEVATION
SUBSTRUCTURE REPAIRS
CONRAIL BRIDGE (SN 016-0142)
COOK COUNTY
SCALE: None
DATE: JULY 7, 2005
DRAWN BY: CHD
CHECKED BY: MJM

F:\P\40468\SI\trac\NE&K_Dwg\c\tr\52-300\04_LBri\Ige\Repa\sn016-0142-300.sht 2/2/2005 6/21/2005