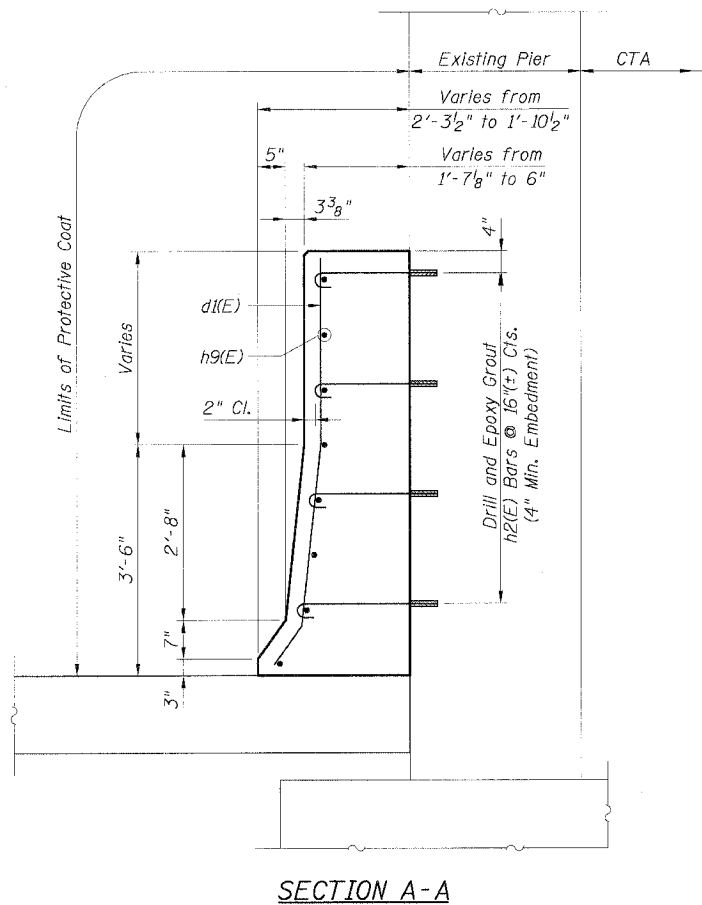
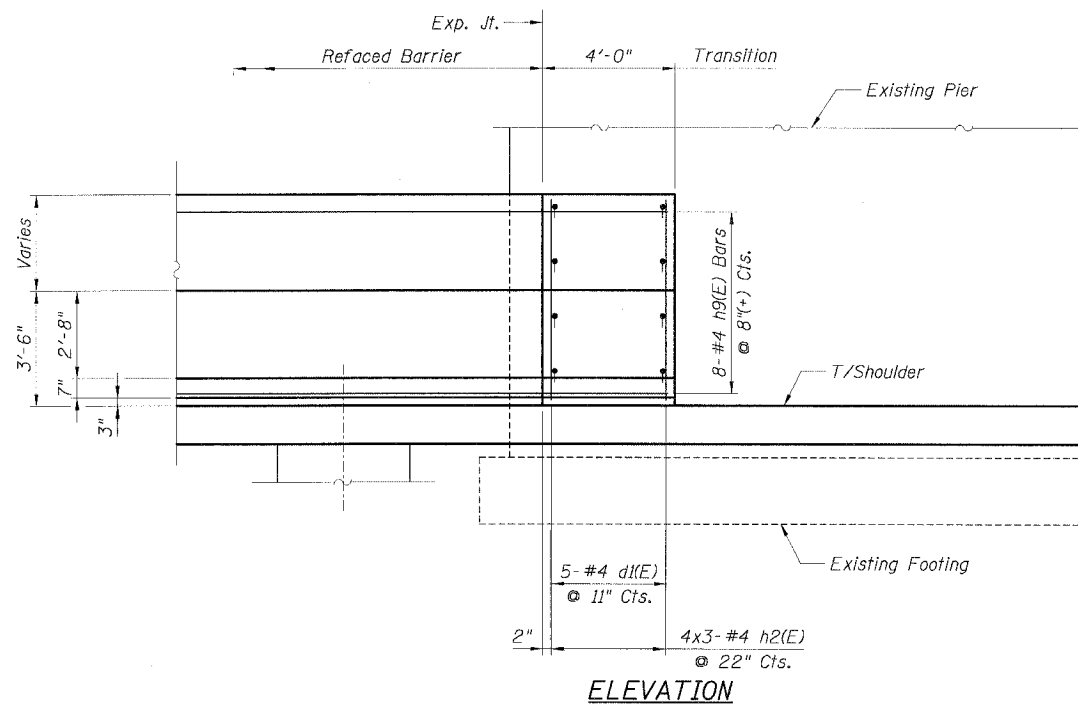
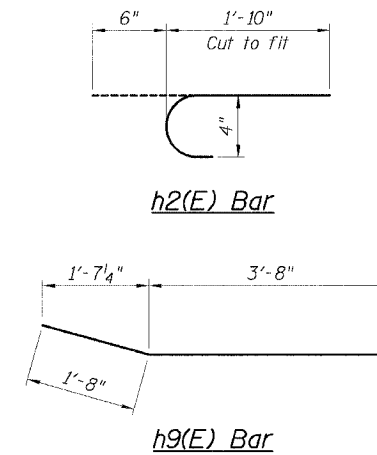
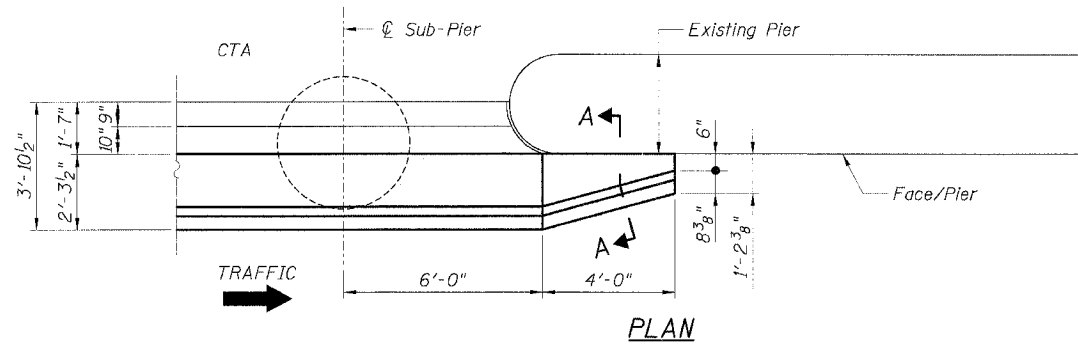


STATE OF ILLINOIS
DEPARTMENT OF TRANSPORTATION

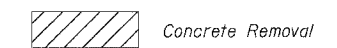
F.A.I. RTE. 90/94	SECTION *	COUNTY COOK	TOTAL SHEETS 598	SHEET NO. 417
STA.		TO STA.		
FED. ROAD DIST. NO. 1 ILLINOIS FED. AID PROJECT				
* (1818, ETC, 2324.6-10)R-9 62302				

**BILL OF MATERIAL
FOR ONE TRANSITION**

Bar	No.	Size	Length	Shape
d1(E)	5	#4	6'-5"	—
h2(E)	12	#4	2'-4"	⌋
h9(E)	8	#4	5'-4"	—
Item				
		Unit	Quantity	
Reinforcement Bars, Epoxy Coated		Pound	56	
Concrete Superstructure		Cu. Yd.	1.4	
Protective Coat		Sq. Yd.	4	



LEGEND:



NOTES:

1. Drilling and grouting of #4 h2(E) bars shall be in accordance with Section 584 of the Standard Specifications.
2. The cost of drilling holes, furnishing and placing Epoxy Grout and setting #4 h2(E) bars shall be included in the cost per cubic yard for Concrete Superstructure.
3. For d1(E) bar details, see Sheet B2.
4. For Refaced Barrier Wall Details, see Sheets B2 and B3.
5. For locations of Transition, see Roadway Plans.

CTE | AECOM

REVISIONS	
NAME	DATE
MJP	8-12-05

ILLINOIS DEPARTMENT OF TRANSPORTATION
F.A.I. 90/94 (DAN RYAN EXPRESSWAY)
71ST STREET TO 31ST STREET (SB EXPRESS LANES)
EXISTING BARRIER WALL MODIFICATIONS
AT CTA STATIONS
PROPOSED T/S SHOULDER BELOW EXISTING
REFACED BARRIER TO PIER
TRANSITION DETAILS (NO TAPER)
SCALE: None DRAWN BY: CHD
DATE: July 7, 2005 CHECKED BY: MJP

Sheet B9 of 18

8/10/2005 11:00:54 AM