

STATE OF ILLINOIS
DEPARTMENT OF TRANSPORTATION

F.A.P. RTE.	SECTION	COUNTY	TOTAL SHEETS	SHEET NO.
761	(107) I-2	MACOUPIN	20	1
		ILLINOIS	CONTRACT NO. 72H75	

INDEX OF SHEETS

- 1 COVER SHEET
- 2 GENERAL NOTES
- 3-4 SUMMARY OF QUANTITIES
- 5-6 SCHEDULE OF QUANTITIES
- 7 TYPICAL SECTIONS
- 8 STAGING DETAIL
- 9 ROADWAY PLAN SHEET
- 10-11 TRAFFIC CONTROL PLAN SHEET
- 12-14 DETAILS
- 15-20 BRIDGE PLANS

PROPOSED HIGHWAY PLANS

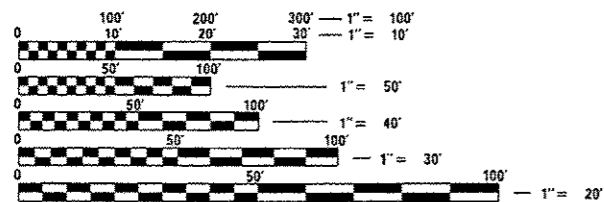
FAP ROUTE 761
SECTION (107) I-2
PROJECT: ACF-0761(014)
BRIDGE REPAIR
MACOUPIN COUNTY

C-96-051-15



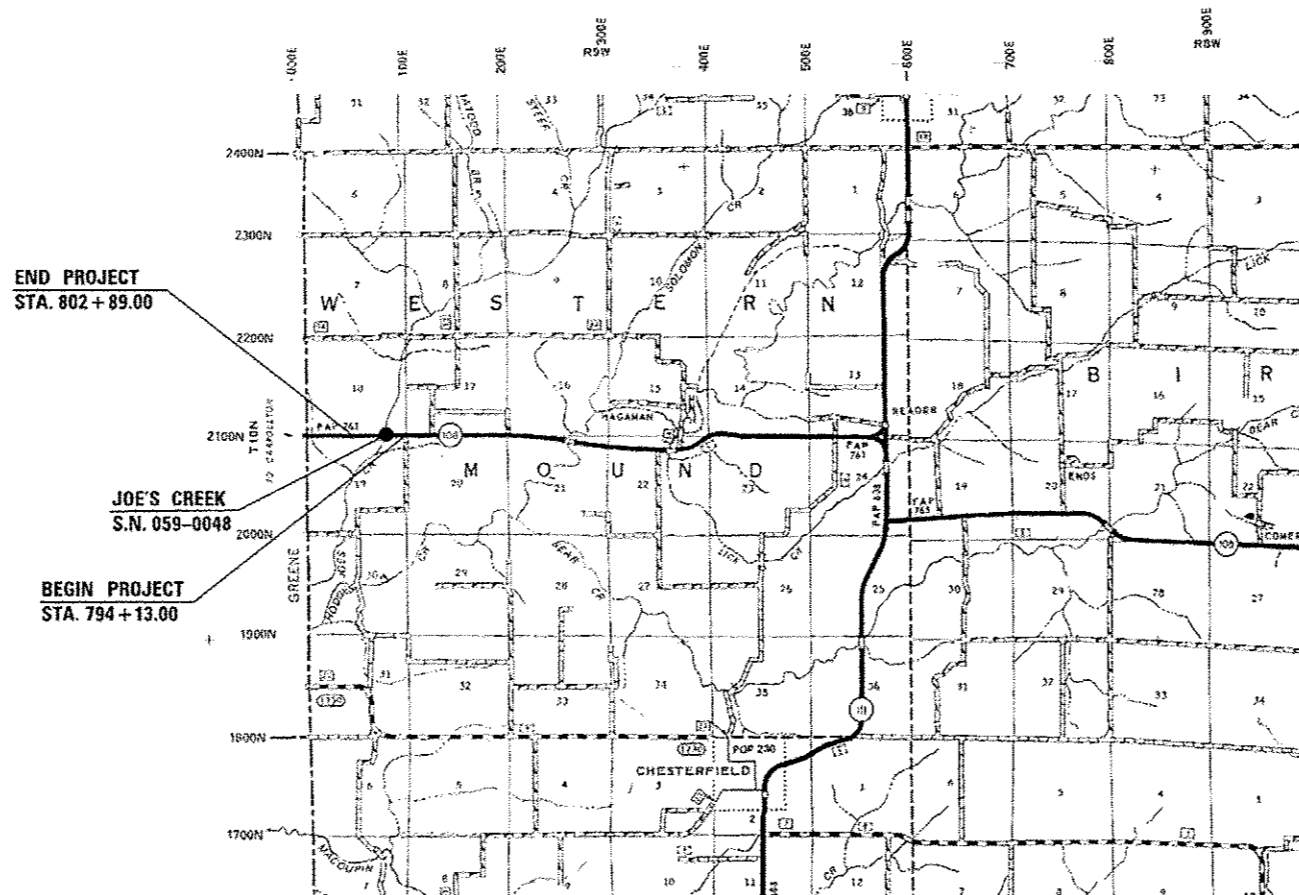
STANDARDS

000001-06	701301-04
001006	701306-03
610001-06	701311-03
630001-10	701321-15
630301-06	701326-04
631031-14	701901-05
701001-02	704001-08
701006-05	725001
701201-04	781001-04
	782006



FULL SIZE PLANS HAVE BEEN PREPARED USING STANDARD ENGINEERING SCALES. REDUCED SIZED PLANS WILL NOT CONFORM TO STANDARD SCALES. IN MAKING MEASUREMENTS ON REDUCED PLANS, THE ABOVE SCALES MAY BE USED.

J.U.L.I.E.
JOINT UTILITY LOCATION INFORMATION FOR EXCAVATION
1-800-892-0123
OR 811



LOCATION MAP

GROSS LENGTH = 876 FT. = 0.166 MILE
NET LENGTH = 876 FT. = 0.166 MILE

TRAFFIC COUNT

ADT = 700 (2013)
PV = 570 (81.4%)
SU = 60 (8.6%)
MIU = 70 (10.0%)

PROJECT ENGINEER: JAY EDWARDS (217) 785-0597
PROJECT MANAGER: JARED MARTIN (217) 524-0064

CONTRACT NO. 72H75

STATE OF ILLINOIS
DEPARTMENT OF TRANSPORTATION

SUBMITTED August 10 2016

[Signature] REGIONAL ENGINEER

Sept 20 2016
[Signature] ENGINEER OF DESIGN AND ENVIRONMENT

Sept 20 2016
[Signature] DIRECTOR OF HIGHWAYS, CHIEF ENGINEER

**PRINTED BY THE AUTHORITY
OF THE STATE OF ILLINOIS**

GENERAL NOTES

1. ANY REFERENCE TO A STANDARD IN THESE PLANS SHALL BE INTERPRETED TO MEAN THE EDITION AS INDICATED BY THE SUB NUMBER LISTED IN THE INDEX OF SHEETS OR THE COPY OF THE STANDARD INCLUDED IN THESE PLANS.
2. IN ADDITION TO FIELD SURVEYS, PLAN DIMENSIONS AND DETAILS RELATIVE TO THE EXISTING FACILITIES HAVE BEEN TAKEN FROM EXISTING PLANS AND ARE SUBJECT TO CONSTRUCTION VARIATIONS. IT SHALL BE THE CONTRACTOR'S RESPONSIBILITY TO VERIFY SUCH DIMENSIONS AND DETAILS IN THE FIELD. SUCH VARIATIONS SHALL NOT BE A CAUSE FOR ADDITIONAL COMPENSATION DUE TO A CHANGE IN THE SCOPE OF WORK, HOWEVER, THE CONTRACTOR WILL BE PAID FOR THE QUANTITY ACTUALLY FURNISHED AT THE UNIT PRICE BID FOR THE WORK.
3. ACCESS TO ALL ENTRANCES AND SIDE ROADS SHALL BE MAINTAINED AT ALL TIMES.
4. THE CONTRACTOR SHALL BE RESPONSIBLE FOR PROTECTING UTILITY PROPERTY FROM CONSTRUCTION OPERATIONS, AS OUTLINED IN ARTICLE 107.31 OF THE STANDARD SPECIFICATIONS. THE J.U.L.I.E. NUMBER IS 1-800-892-0123. A MINIMUM OF 48 HOURS ADVANCE NOTICE IS REQUIRED.
5. THE THICKNESS OF BITUMINOUS MIXTURES SHOWN ON THE PLANS IS THE NOMINAL THICKNESS. DEVIATIONS FROM THE NOMINAL THICKNESS WILL BE PERMITTED WHEN SUCH DEVIATIONS OCCUR DUE TO IRREGULARITIES IN THE EXISTING SURFACE OR BASE ON WHICH THE BITUMINOUS MIXTURE IS PLACED.
6. ALL SAW CUTS, NECESSARY TO COMPLETE THE WORK DETAILED IN THESE PLANS, SHALL BE INCLUDED IN THE COST FOR THE VARIOUS PAY ITEMS INVOLVED.
7. UNLESS DIRECTED BY THE ENGINEER, PAVEMENT MARKING LINES SHALL NOT BE LAID DIRECTLY OVER A LONGITUDINAL CRACK OR JOINT NOR OVER A TAR OR ASPHALT PAINTED LINE. THE EDGE OF A CENTERLINE OR LANE LINE SHALL BE OFFSET A MINIMUM DISTANCE OF 2" FROM A LONGITUDINAL CRACK OR JOINT. EDGE LINES SHALL BE APPROXIMATELY 2" FROM THE EDGE LINE OF PAVEMENT. SEE SECTION 780 OF THE STANDARD SPECIFICATIONS FOR TRAFFIC CONTROL ITEMS.
8. THE FOLLOWING RATES OF APPLICATION HAVE BEEN USED TO CALCULATE THE PLAN QUANTITIES:

BITUMINOUS MATERIALS (PRIME COAT)	0.05 LBS/SQ. FT. (ON PAVEMENT)
BITUMINOUS MATERIALS (PRIME COAT)	0.25 LBS/SQ. FT. (ON AGG)
BITUMINOUS MATERIALS (PRIME COAT)	0.025 LBS/SQ. FT. (FOG)
BITUMINOUS CONCRETE SURFACE	0.056 TON/SQ. YD. PER 1"
AGGREGATE MATERIAL	2.05 TON/CU. YD.
9. THE EXISTING ROAD SIGNS THAT INTERFERE WITH CONSTRUCTION WILL BE REMOVED OR RELOCATED AS DIRECTED BY THE ENGINEER. AFTER THE CONSTRUCTION IS COMPLETED, THE CONTRACTOR WILL RE-INSTALL THE SIGNS AS DIRECTED BY THE ENGINEER. THIS WORK WILL NOT BE PAID SEPARATELY BUT SHALL BE CONSIDERED INCLUDED IN THE CONTRACT, AND NO COMPENSATION WILL BE ALLOWED.
10. WHERE SECTION OR SUB-SECTION MARKERS ARE ENCOUNTERED, THE ENGINEER SHALL BE NOTIFIED BEFORE SUCH MONUMENTS ARE REMOVED. THE CONTRACTOR SHALL PROTECT AND CAREFULLY PRESERVE ALL PROPERTY MARKERS AND MONUMENTS UNTIL THE OWNER, AN AUTHORIZED AGENT OR LAND SURVEYOR HAS WITNESSED OR OTHERWISE REFERENCED THEIR LOCATION.
11. AREAS OF DECK REPAIRS SHOWN ARE ESTIMATED. THE ENGINEER SHALL SHOW ACTUAL LOCATIONS OF DECK REPAIRS ON AS-BUILT PLANS.

COMMITMENTS

1. THE RESIDENT ENGINEER SHALL CONTACT STUDIES & PLANS CONCERNING ANY MAJOR PLAN CHANGE TO MAKE SURE NO PREVIOUS COMMITMENTS (NOT LISTED) WERE MADE AFFECTING THE DESIGN AND ALLOW AN IMPROVED DESIGN FOR FUTURE PROJECTS.

THE FOLLOWING MIXTURE REQUIREMENTS ARE APPLICABLE FOR THIS PROJECT:

MIXTURE USE(S):	HMA BASE COURSE WIDENING	HMA SURFACE COURSE/ HMA SHOULDERS
PG:	PG 64-22	PG 64-22
DESIGN AIR VOIDS:	4.0% @ N 50	4.0% @ N 50
MIXTURE COMPOSITION: (GRADATION MIXTURE)	IL 19.0	IL 9.5
FRICTION AGGREGATE:	N/A	MIX "C"
QUALITY MANAGEMENT	OC/OA	OC/OA

DISTRICT SIX	
EXAMINED	JUNE 3 rd 20 16 <i>[Signature]</i>
OPERATIONS ENGINEER	
EXAMINED	June 3 20 16 <i>[Signature]</i>
PROJECT IMPLEMENTATION ENGINEER	
EXAMINED	June 15 20 16 <i>[Signature]</i>
PROGRAM DEVELOPMENT ENGINEER	

SUMMARY OF QUANTITIES				80% FEDERAL 20% STATE 6-00495-0000 BRIDGE 0014 S.N. 059-0048
CODE NO.	ITEM	UNIT	TOTAL QUANTITY	
20200500	EARTH EXCAVATION (WIDENING)	CU YD	59	59
21400100	GRADING AND SHAPING DITCHES	FOOT	231	231
28100703	STONE DUMPED RIPRAP, CLASS A2	SQ YD	205	205
35650300	BASE COURSE WIDENING 8"	SQ YD	252	252
40600275	BITUMINOUS MATERIALS (PRIME COAT)	POUND	911	911
40600982	HOT-MIX ASPHALT SURFACE REMOVAL - BUTT JOINT	SQ YD	145	145
40600990	TEMPORARY RAMP	SQ YD	69	69
40603310	HOT-MIX ASPHALT SURFACE COURSE, MIX "C", N50	TON	185	185
48102100	AGGREGATE WEDGE SHOULDER, TYPE B	TON	58	58
48203100	HOT-MIX ASPHALT SHOULDERS	TON	27	27
50102400	CONCRETE REMOVAL	CU YD	9.7	9.7
50300255	CONCRETE SUPERSTRUCTURE	CU YD	10.5	10.5
50300260	BRIDGE DECK GROOVING	SQ YD	720.4	720.4
50300300	PROTECTIVE COAT	SQ YD	19.5	19.5

SUMMARY OF QUANTITIES				80% FEDERAL 20% STATE 6-00495-0000 BRIDGE 0014 S.N. 059-0048
CODE NO.	ITEM	UNIT	TOTAL QUANTITY	
50800205	REINFORCEMENT BARS, EPOXY COATED	POUND	1210	1210
50800515	BAR SPLICERS	EACH	24	24
52000110	PREFORMED JOINT STRIP SEAL	FOOT	78	78
63000003	STEEL PLATE BEAM GUARDRAIL, TYPE A, 9 FOOT POSTS	FOOT	812.5	812.5
63100085	TRAFFIC BARRIER TERMINAL, TYPE 6	EACH	4	4
63100167	TRAFFIC BARRIER TERMINAL, TYPE 1 (SPECIAL) TANGENT	EACH	4	4
63200310	GUARDRAIL REMOVAL	FOOT	1175	1175
67100100	MOBILIZATION	LSUM	1	1
70100405	TRAFFIC CONTROL AND PROTECTION, STANDARD 701321	EACH	1	1
70100450	TRAFFIC CONTROL AND PROTECTION, STANDARD 701201	LSUM	1	1
70100460	TRAFFIC CONTROL AND PROTECTION, STANDARD 701306	LSUM	1	1
70100500	TRAFFIC CONTROL AND PROTECTION, STANDARD 701326	LSUM	1	1
70106500	TEMPORARY BRIDGE TRAFFIC SIGNALS	EACH	1	1
70300100	SHORT TERM PAVEMENT MARKING	FOOT	73	73

FILE NAME =	USER NAME = Varonshifa	DESIGNED -	REVISED -
p:\IL08\EBIOINTEC\Illinois.gov\P100T\Documents\DOT Offices\District 5\Projects\067-DB\100\000\6AD\sheet\0672H75 sht-500.dwg		CHECKED -	REVISED -
		DATE -	REVISED -
Defaults	PLOT DATE = 8/18/2016		

STATE OF ILLINOIS
DEPARTMENT OF TRANSPORTATION

SUMMARY OF QUANTITIES
FAP 761 (IL 108)

SCALE: SHEET OF SHEETS STA. TO STA.

F.A.P. RTE.	SECTION	COUNTY	TOTAL SHEETS	SHEET NO.
761	(107) 1-2	MACOUPIN	20	3
CONTRACT NO. 72H75			Rev.	
ILLINOIS FED. AID PROJECT				

SUMMARY OF QUANTITIES				80% FEDERAL 20% STATE 6-00495-0000 BRIDGE 0014 S.N. 059-0048
CODE NO.	ITEM	UNIT	TOTAL QUANTITY	
70300150	SHORT TERM PAVEMENT MARKING REMOVAL	SO FT	24	24
70400100	TEMPORARY CONCRETE BARRIER	FOOT	450	450
70400200	RELOCATE TEMPORARY CONCRETE BARRIER	FOOT	425	425
70600260	IMPACT ATTENUATORS, TEMPORARY (FULLY REDIRECTIVE, NARROW), TEST LEVEL 3	EACH	2	2
70600332	IMPACT ATTENUATORS, RELOCATE (FULLY REDIRECTIVE, NARROW), TEST LEVEL 3	EACH	2	2
78001120	PAINT PAVEMENT MARKING - LINE 5"	FOOT	2016	2016
78100100	RAISED REFLECTIVE PAVEMENT MARKER	EACH	10	10
78200005	GUARDRAIL REFLECTOR, TYPE A	EACH	16	16
72501000	TERMINAL MARKER - DIRECT APPLIED	EACH	4	4
X0327980	PAVEMENT MARKING REMOVAL - WATER BLASTING	SO FT	947	947
78300200	RAISED REFLECTIVE PAVEMENT MARKER REMOVAL	EACH	10	10
X0931400	INLET BOXES TO BE ADJUSTED (SPECIAL)	EACH	2	2
X5060601	CONTAINMENT AND DISPOSAL OF NON-LEAD PAINT CLEANING RESIDUES NO. 1	LSUM	1	1
X7200201	WIDTH RESTRICTION SIGNING	LSUM	1	1

SUMMARY OF QUANTITIES				80% FEDERAL 20% STATE 6-00495-0000 BRIDGE 0014 S.N. 059-0048
CODE NO.	ITEM	UNIT	TOTAL QUANTITY	
Z0001905	STRUCTURAL STEEL REPAIR	POUND	1020	1020
Z0010501	CLEANING AND PAINTING STEEL BRIDGE NO. 1	LSUM	1	1
Z0012130	BRIDGE DECK SCARIFICATION 3/4"	SO YD	768.4	768.4
Z0012164	BRIDGE DECK MICROSILICA CONCRETE OVERLAY 2 1/2"	SO YD	768.4	768.4
Z0016002	DECK SLAB REPAIR (FULL DEPTH, TYPE II)	SO YD	20.7	20.7
Z0021903	SILICONE JOINT SEALER, 3/4"	FOOT	24	24

6

FILE NAME =	USER NAME = Yaronakife	DESIGNED -	REVISED -
p:\110848\EGID\INTEG\Illinois.gov\WIDOT\Do	Documents\DOT Office\District 6\Projects\067	FOR 72H75	REVISED -
	PLOT SCALE = 1/8" = 100.0000' / in.	CHECKED -	REVISED -
Default	PLOT DATE = 8/18/2016	DATE -	REVISED -

STATE OF ILLINOIS
DEPARTMENT OF TRANSPORTATION

SUMMARY OF QUANTITIES
FAP 761 (IL 108)

SCALE: SHEET OF SHEETS STA. TO STA.

F.A.P. RTE.	SECTION	COUNTY	TOTAL SHEETS	SHEET NO.
761	(107) 1-2	MACOUPIN	20	4
			CONTRACT NO. 72H75	
ILLINOIS FED. AID PROJECT				

SHOULDER IMPROVEMENT SCHEDULE								
LOCATION STATION TO STATION FAP 761 (IL 108)	LENGTH (FT)	PROPOSED WIDTH (FT)	EXISTING WIDTH (FT)	EARTH EXCAVATION (WIDENING) (CU YD)	HOT-MIX ASPHALT BASE COURSE WIDENING, 8" (SQ YD)	HOT-MIX ASPHALT SHOULDERS, 1 3/4" (TON)	BITUMINOUS MATERIALS (PRIME COAT) (POUND)	
EASTBOUND								
STA. 795+82.00 TO STA. 797+21.21	139.21	3	0	10.8	46.4	4.5	10.4	
STA. 797+21.21 TO STA. 797+37.71	16.50	3	3	-	-	0.5	1.2	
BRIDGE OMISSION S.N. 059-0048								
STA. 799+60.29 TO STA. 799+73.19	12.90	3	3	-	-	0.4	1.0	
STA. 799+73.79 TO STA. 802+11.00	237.21	3	0	18.4	79.1	7.7	17.8	
SUB-TOTAL				29.3	125.5	13.3	30.4	
WESTBOUND								
STA. 794+90.00 TO STA. 797+21.21	231.21	3	0	18.0	77.1	7.6	17.3	
STA. 797+21.21 TO STA. 797+37.71	16.50	3	3	-	-	0.5	1.2	
BRIDGE OMISSION S.N. 059-0048								
STA. 799+60.29 TO STA. 799+73.79	13.50	3	3	-	-	0.4	1.0	
STA. 799+73.79 TO STA. 801+21.00	147.21	3	0	11.4	49.1	4.8	11.0	
SUB-TOTAL				29.4	126.1	13.3	30.6	
TOTAL				58.71	251.61	26.60	61.07	

1 - BITUMINOUS MATERIALS (PRIME COAT)/FOG COAT ADDED BETWEEN SHOULDER LIFTS

DRAINAGE SCHEDULE				
LOCATION STATION TO STATION FAP 761 (IL 108)	LENGTH (FT)	WIDTH (FT)	GRADING AND SHAPING DITCHES (FT)	STONE DUMPED RIPRAP, CLASS A2 (SQ YD)
EASTBOUND				
STA. 799+80.00 TO STA. 802+11.00	231.0	8.0	231	205
			231	205

TEMPORARY RAMPS			
LOCATION STATION FAP 761 (IL 108)	LENGTH (FT)	WIDTH (FT)	AREA (SQ YD)
MAINLINE S.N. 059-0048			
794+13.00	6	26	17.33
797+37.71	6	26	17.33
799+60.29	6	26	17.33
802+89	6	26	17.33
TOTAL			69.3

PAVEMENT SCHEDULE								
LOCATION STATION TO STATION FAP 761 (IL 108)	LENGTH (FT)	WIDTH (FT)	AREA (SQ YD)	HOT-MIX ASPHALT SURF. REM. BUTT-JOINT (SQ YD)	HOT-MIX ASPHALT SURFACE COURSE MIX "C", N50 (1 3/4") (TON)	BITUMINOUS MATERIALS (PRIME CT) (POUND)		
EASTBOUND								
STA. 794+13.00 TO STA. 794+63.00	50.00	13	72.2	72.2	7.1	32.5		
STA. 794+63.00 TO STA. 797+37.71	274.71	13	396.8	-	38.9	178.6		
BRIDGE OMISSION S.N. 059-0048								
STA. 799+60.29 TO STA. 802+39.00	278.71	13	402.6	-	39.5	181.2		
STA. 802+39.00 TO STA. 802+89.00	50.00	13	72.2	-	7.1	32.5		
SUB-TOTAL				72.2	92.5	424.7		
WESTBOUND								
STA. 794+13.00 TO STA. 794+63.00	50.00	13	72.2	72.2	7.1	32.5		
STA. 794+63.00 TO STA. 797+37.71	274.71	13	396.8	-	38.9	178.6		
BRIDGE OMISSION S.N. 059-0048								
STA. 799+60.29 TO STA. 802+39.00	278.71	13	402.6	-	39.5	181.2		
STA. 802+39.00 TO STA. 802+89.00	50.00	13	72.2	-	7.1	32.5		
SUB-TOTAL				72.2	92.5	424.7		
TOTAL				144.4	185.0	849.4		

AGGREGATE WEDGE SHOULDER, TYPE B			
LOCATION STATION TO STATION FAP 761 (IL 108)	LENGTH (FT)	WIDTH (FT)	(TONS)
EASTBOUND			
STA. 794+13.00 TO STA. 797+21.21	308.21	3	17.6
BRIDGE OMISSION S.N. 059-0048			
STA. 802+11.00 TO STA. 802+89.00	78.00	3	4.4
WESTBOUND			
STA. 794+13.00 TO STA. 797+21.21	308.21	3	17.6
BRIDGE OMISSION S.N. 059-0048			
STA. 799+73.79 TO STA. 802+89.00	315.21	3	17.9
•AVERAGE THICKNESS 3"			TOTAL 57.5

PAVEMENT MARKING REMOVAL - WATER BLASTING				
LOCATION STATION TO STATION	DESCRIPTION	LENGTH (FT)	PAVE MARK REM WATER BLASTING (SQ FT)	
FAP 761 (IL 108)				
EXISTING TO BE REMOVED FOR STAGE I				
STA. 794+15.00 TO STA. 796+00.00	CL SKIP-DASH	46.3	5	
STA. 800+85.00 TO STA. 802+87.00	CL SKIP-DASH	50.5	5	
STA. 802+00.00 TO STA. 802+87.00	CL SOLID	87.0	9	
STA. 796+17.00 TO STA. 800+87.50	WB SOLID EDGE	470.5	193	
EXISTING TO BE REMOVED FOR STAGE II				
STA. 796+10.50 TO STA. 800+84.00	EB SOLID EDGE	473.5	194	
STA. 799+60.00 TO STA. 800+60.00	EB SOLID EDGE	100.0	41	
STAGE I TO BE REMOVED FOR STAGE II				
STA. 794+86.00 TO STA. 795+85.00	CL SOLID	99.0	41	
STA. 801+00.00 TO STA. 802+77.00	CL SOLID	177.0	73	
STAGES I & II TO BE REMOVED FOR FINAL				
STA. 796+17.00 TO STA. 800+87.50	WB SOLID EDGE	470.5	193	
STA. 796+10.50 TO STA. 800+84.00	EB SOLID EDGE	473.5	194	
			947	

SHORT-TERM PAVEMENT MARKING					
LOCATION STATION TO STATION	LENGTH (FT)	SPACING	NUMBER OF APPLICATIONS	SHORT-TERM PAVE MARK (FT)	SHORT TERM PAVE MARK REM (SQ FT)
FAP 761 (IL 108)					
STA. 794+13.00 TO STA. 797+37.00	324.0	4' / 40'	1	36.0	12
BRIDGE OMISSION S.N. 059-0048					
STA. 799+60.00 TO STA. 802+89.00	329.0	4' / 40'	1	37.0	12
TOTAL				73.0	24

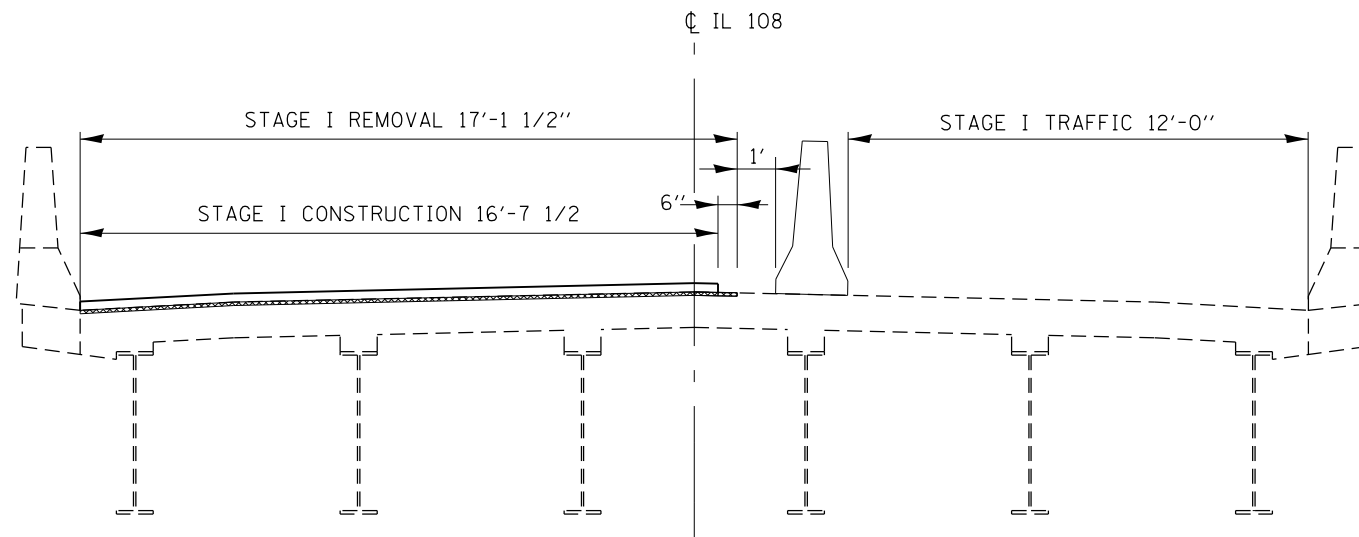
NOTE: SHORT-TERM PAVEMENT MARKING QUANTITIES ARE CALCULATED AS FOLLOWS:
NO APPLICATION FOR EDGE LINES (WHITE) AND ONE FOR BIDIRECTIONAL (YELLOW)

PAVEMENT MARKING						
LOCATION STATION TO STATION	DESCRIPTION	LENGTH (FT)	SPACING	LINE-5"		
				YELLOW (FT)	WHITE (FT)	
FAP 761 (IL 108)						
STA. 794+13.00 TO STA. 802+89.00	SKIP-DASH	876.00	10' @ 40'	229	-	
STA. 802+00.00 TO STA. 802+89.00	SOLID NPZ (WB)	89.00		89		
STA. 794+40.00 TO STA. 802+89.00	SOLID (EDGE LINE EB)	849.00	-	-	849	
STA. 794+40.00 TO STA. 802+89.00	SOLID (EDGE LINE WB)	849.00	-	-	849	
SUB TOTAL				318	1698	
TOTAL				318	1698	2,016

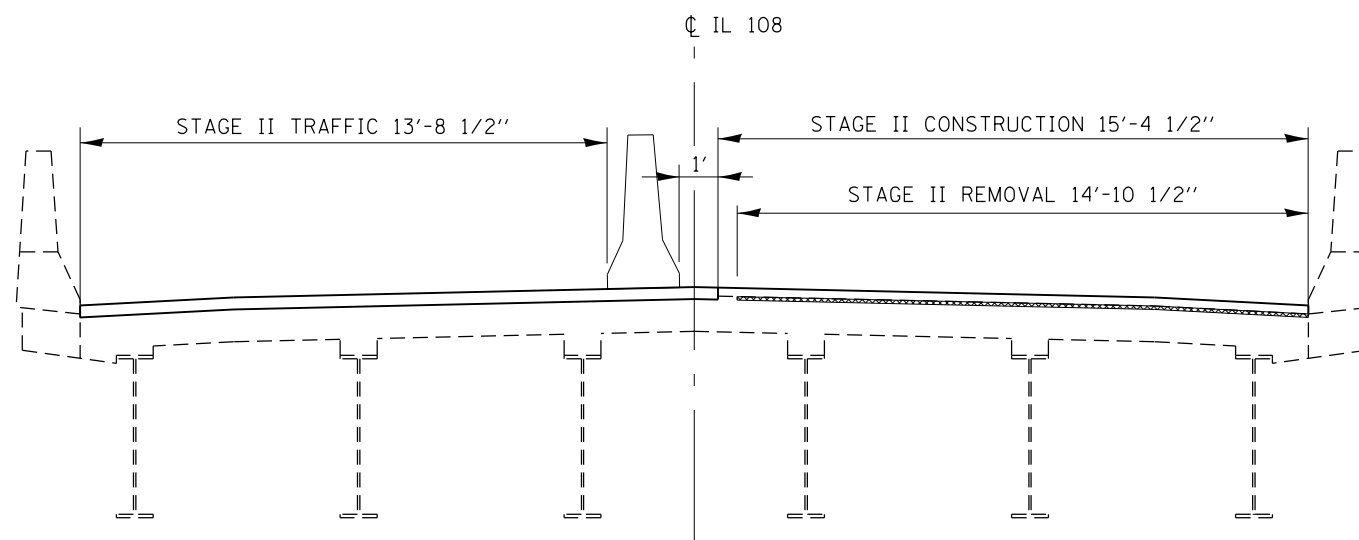
INLET BOXES TO BE ADJUSTED (SPECIAL)	
LOCATION STATION TO STATION	INLET BOXES TO BE ADJUSTED (SPECIAL) (EACH)
FAP 761 (IL 108)	
EASTBOUND	
STA. 797+24.00	1
WESTBOUND	
STA. 797+24.00	1
2	

RAISED REFLECTIVE PAVEMENT MARKERS					
LOCATION STATION TO STATION	LENGTH (FT)	SPACING (FT)	TWO-WAY AMBER MARKER (EACH)	REMOVAL (EACH)	
FAP 761 (IL 108)					
STA. 794+13.00 TO STA. 797+37.71	324.7	1/80	5	5	
BRIDGE OMISSION S.N. 059-0048					
STA. 799+60.29 TO STA. 802+89.00	328.7	1/80	5	5	
TOTALS			10	10	

GUARDRAIL SCHEDULE									
LOCATION STATION TO STATION	LENGTH (FT)	GUARDRAIL REMOVAL (FT)	SPBG TY. A 9' POST (FT)	TR. BAR. TERM., TY 1 (SPL) TANGENT (EACH)	TR. BAR. TERM., TY 6 (EACH)	GUARDRAIL REFLECTORS TY. A (EACH)	TERMINAL MARKER DIRECT APPLIED (EACH)		
EASTBOUND									
STA. 796+14.00 LT TO STA. 801+21.00 LT	507.00	507.0	412.5	1.0	1.0	4.0	1.0		
BRIDGE OMISSION S.N. 059-0048									
STA. 799+57.00 LT TO STA. 802+09.00 LT	252.00	252.0	162.5	1.0	1.0	4.0	1.0		
WESTBOUND									
STA. 794+89.00 RT TO STA. 797+41.00 RT	252.00	252.0	162.5	1.0	1.0	4.0	1.0		
BRIDGE OMISSION S.N. 059-0048									
STA. 799+57.00 RT TO STA. 801+21.00 RT	164.00	164.0	75.0	1.0	1.0	4.0	1.0		
TOTAL		1,175.0	812.5	4.0	4.0	16.0	4.0		

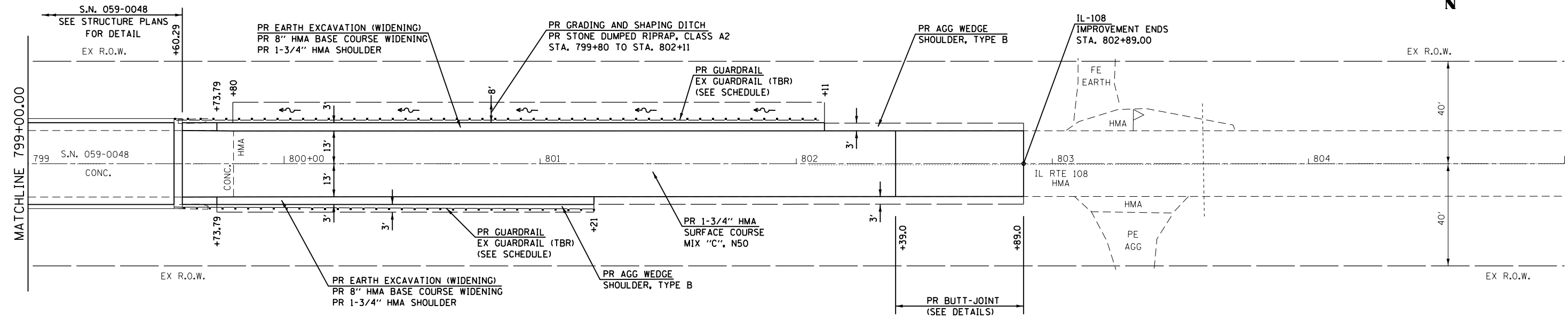
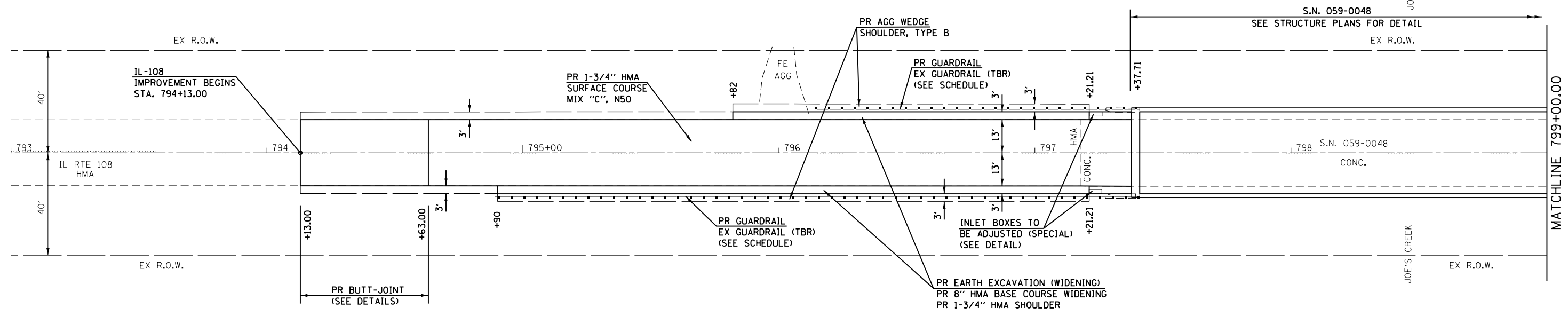


STAGE I
(LOOKING WEST)

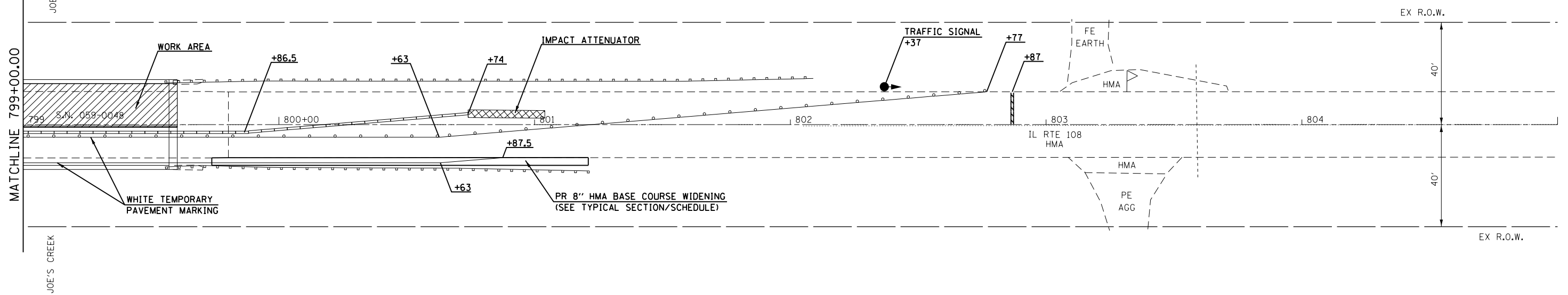
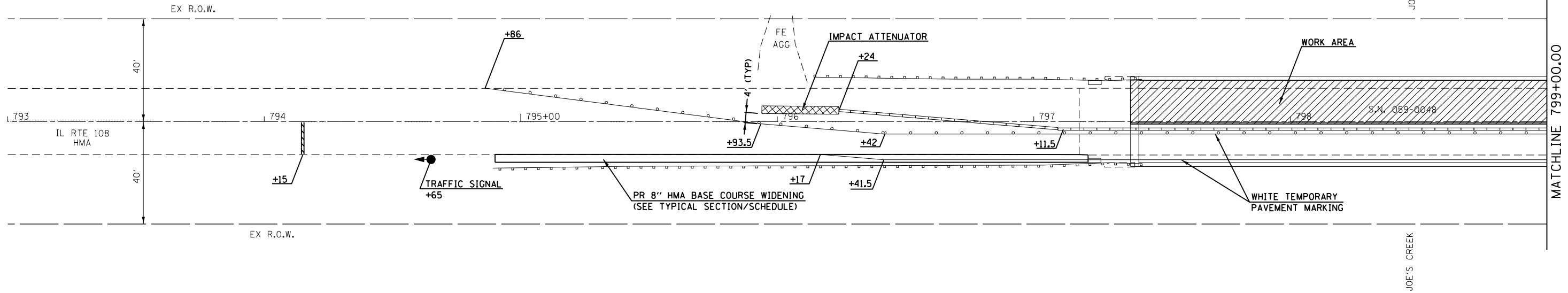


STAGE II
(LOOKING WEST)

FILE NAME = p:\IL\084EBID\INTEG\illinois.gov\PWIDOT\Documents\IDOT_Offices\District_6\Projects\0672H75-001\Drawings\0672H75-sht-detail.dwg	USER NAME = Verenskifa	DESIGNED -	REVISED -	STATE OF ILLINOIS DEPARTMENT OF TRANSPORTATION	TRAFFIC STAGING DETAIL FAP 761 (IL 108)			F.A.P. RTE.	SECTION	COUNTY	TOTAL SHEETS	SHEET NO.
	PLOT SCALE = 40.0000' / in.	CHECKED -	REVISED -					761	(107) I-2	MACOUPIN	20	8
Default	PLOT DATE = 8/10/2016	DATE -	REVISED -		SCALE:	SHEET	OF	SHEETS	STA.	TO STA.	ILLINOIS FED. AID PROJECT CONTRACT NO. 72H75	



FILE NAME =	USER NAME = Verenskif	DESIGNED -	REVISED -	STATE OF ILLINOIS DEPARTMENT OF TRANSPORTATION	PLAN SHEET FAP 761 (IL 108)			F.A.P. RTE.	SECTION	COUNTY	TOTAL SHEETS	SHEET NO.
pw\IL084EBIDINTEG.illinois.gov\PIWIDOT\Documents\IDOT Offices\District 6\Projects\0672\Drawings\60\Sheets\0672H75-sht-plan.dwg		CHECKED -	REVISED -		761	(107) I-2	MACOUPIN	20	9			
Default	PLOT SCALE = 48.0000' / in.	DATE -	REVISED -		SCALE: SHEET OF SHEETS STA. TO STA.			CONTRACT NO. 72H75				
	PLOT DATE = 8/10/2016							ILLINOIS FED. AID PROJECT				



NOTE:
SIGNS AND TRAFFIC CONTROL DEVICES NOT SHOWN IN THIS DETAIL
SHALL CONFORM TO STANDARD 701321

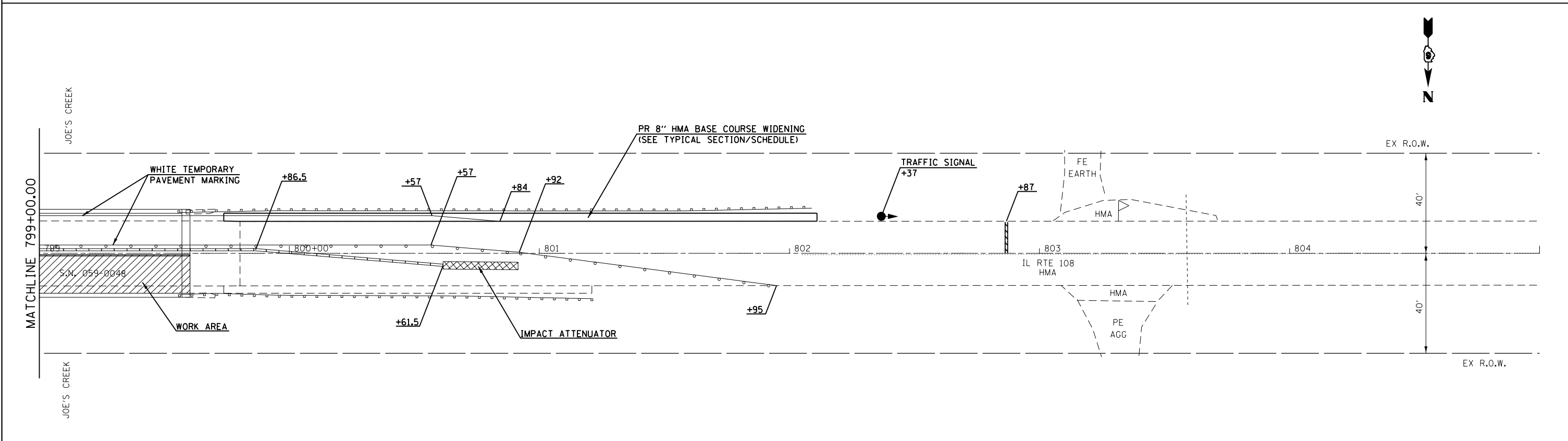
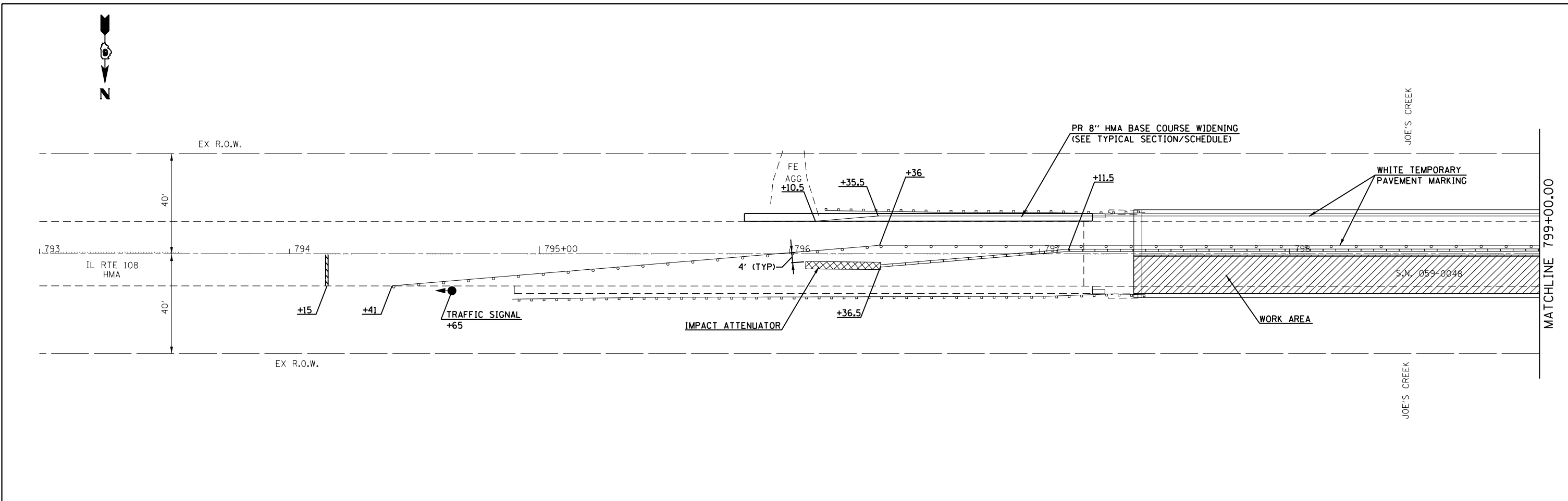
FILE NAME =	USER NAME = VerenskiFa	DESIGNED -	REVISED -
pw:\IL084EBIDINTEG\illinois.gov\PI\DOT\Documents\IDOT Offices\District 6\Projects\0672H\Drawings\60\Sheets\0672H75-sht-stage1.dwg		DRAWN -	REVISED -
	PLOT SCALE = 40.0000' / in.	CHECKED -	REVISED -
Default	PLOT DATE = 8/10/2016	DATE -	REVISED -

STATE OF ILLINOIS
DEPARTMENT OF TRANSPORTATION

TRAFFIC CONTROL PLAN
STAGE I FAP 761 (IL 108)

SCALE: SHEET OF SHEETS STA. TO STA.

F.A.P. RTE.	SECTION	COUNTY	TOTAL SHEETS	SHEET NO.
761	(107) I-2	MACOUPIN	20	10
CONTRACT NO. 72H75			ILLINOIS FED. AID PROJECT	



NOTE:
SIGNS AND TRAFFIC CONTROL DEVICES NOT SHOWN IN THIS DETAIL
SHALL CONFORM TO STANDARD 701321

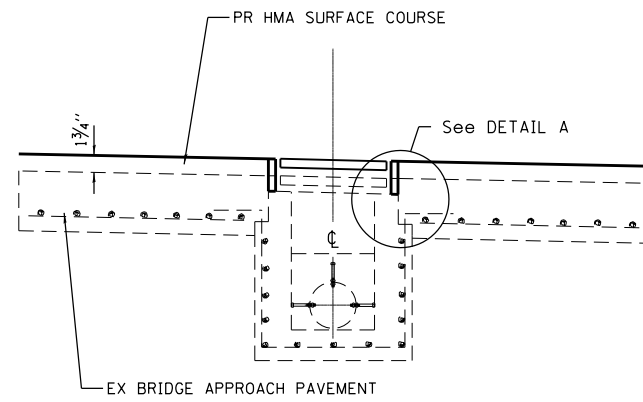
FILE NAME =	USER NAME = Verenskif	DESIGNED -	REVISED -
pw:\IL084EBIDINTEG\Illinois.gov\PWIDOT\Documents\DOT Offices\District 6\Projects\D672H75-sht-staging\DRAWINGData\EAD\Sheets\D672H75-sht-staging		CHECKED -	REVISED -
Default	PLOT DATE = 8/10/2016	DATE -	REVISED -

**STATE OF ILLINOIS
DEPARTMENT OF TRANSPORTATION**

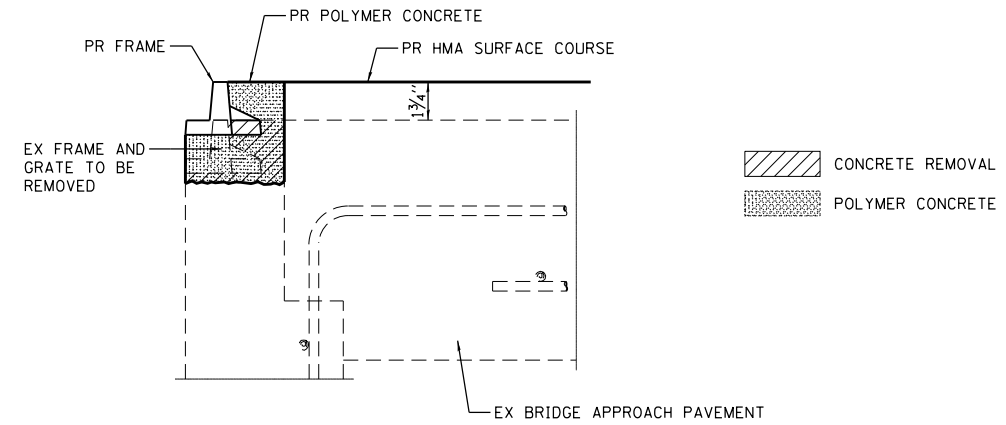
**TRAFFIC CONTROL PLAN
STAGE II FAP 761 (IL 108)**

F.A.P. RTE.	SECTION	COUNTY	TOTAL SHEETS	SHEET NO.
761	(107) I-2	MACOUPIN	20	11
				CONTRACT NO. 72H75
ILLINOIS FED. AID PROJECT				

SCALE:	SHEET	OF	SHEETS	STA.	TO	STA.
--------	-------	----	--------	------	----	------



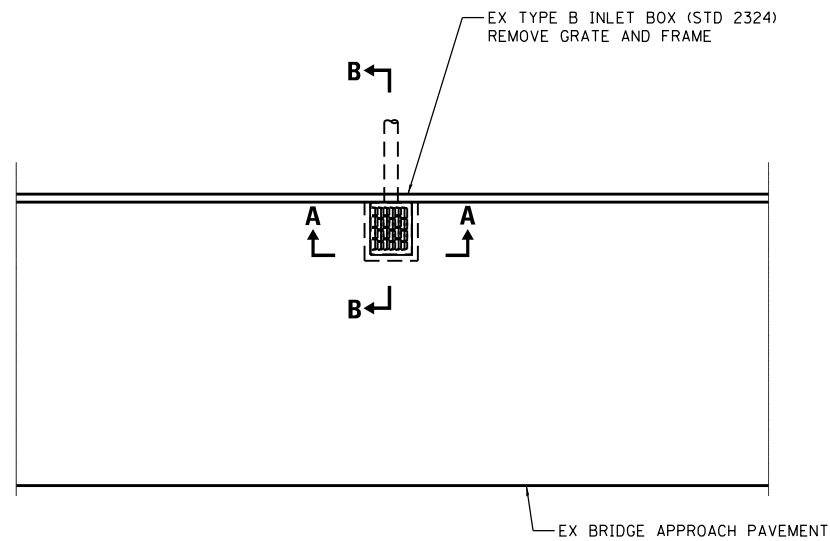
SEC. A-A



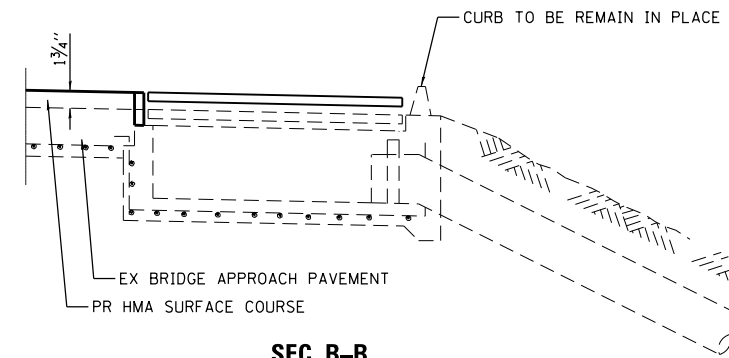
DETAIL A

GENERAL NOTES

THE CONTRACTOR SHALL FURNISH AND INSTALL A NEW CAST FRAME AND CAST GRATE AS SPECIFIED ON STANDARD 610001 FOR THE TYPE G INLET BOX



**PLAN
STA. 797+24 LT & RT**



SEC. B-B

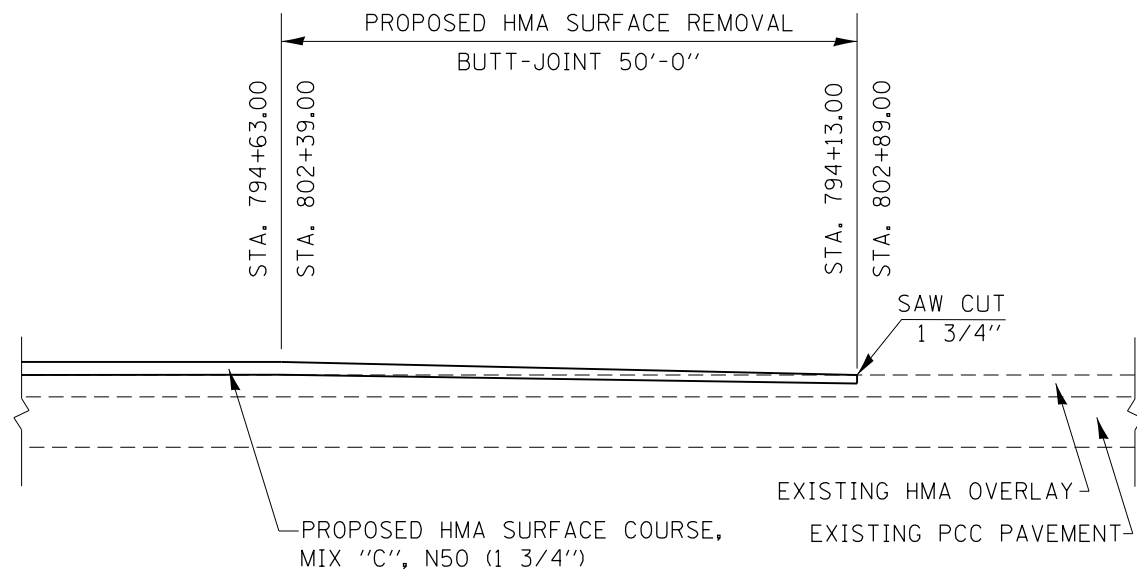
FILE NAME =	USER NAME = Verenskif	DESIGNED -	REVISED -
pw:\IL\084EBIDINTEG.illinois.gov\PWIDOT\Documents\DOT Offices\District 6\Projects\0672\DRAWING\DATA\EA0\Sheets\0672H75-sht-detail		CHECKED -	REVISED -
Default	PLOT DATE = 8/10/2016	DATE -	REVISED -

STATE OF ILLINOIS
DEPARTMENT OF TRANSPORTATION

INLET BOX ADJUSTMENT DETAIL
FAP 761 (IL 108)

SCALE: SHEET OF SHEETS STA. TO STA.

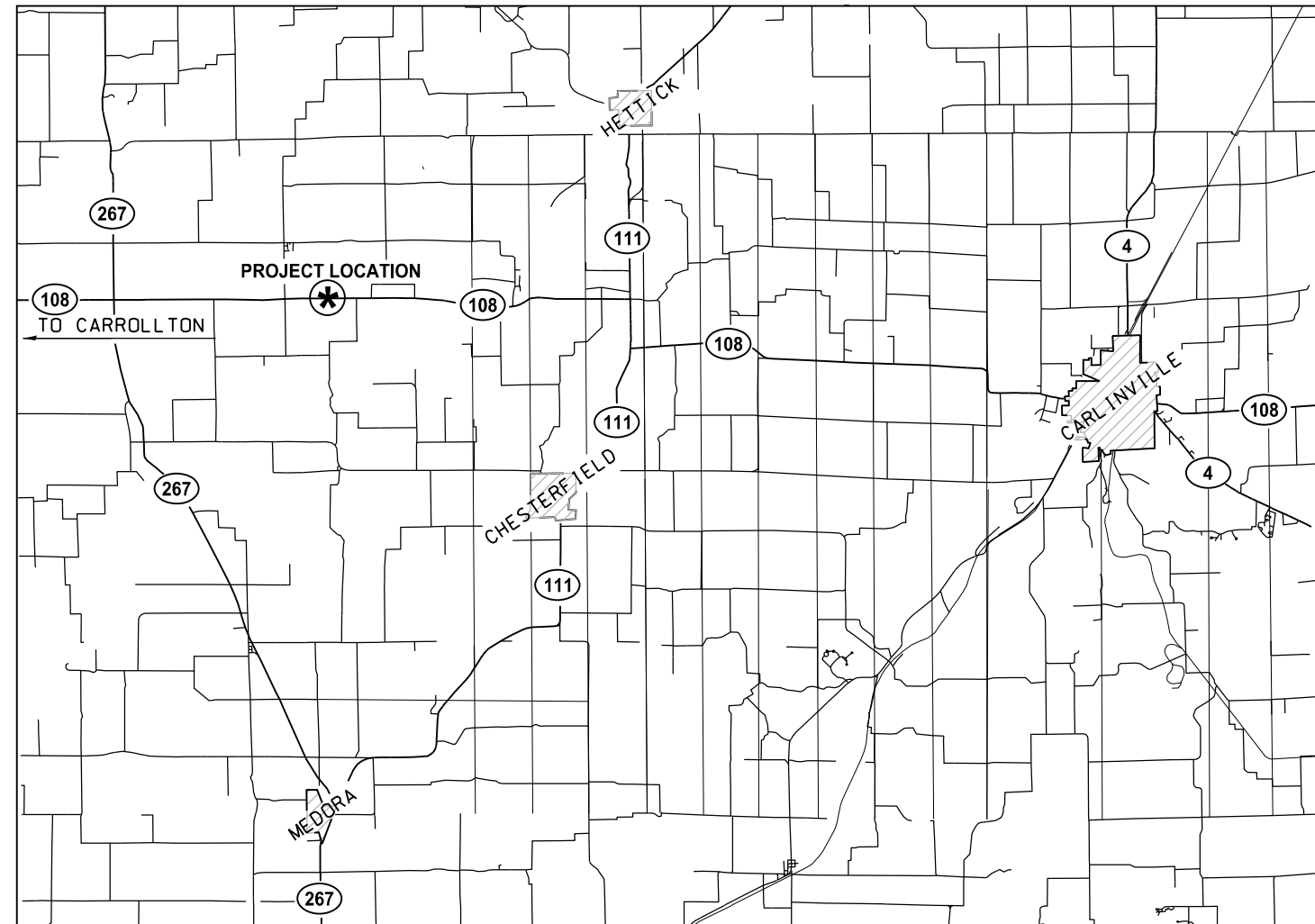
F.A.P. RTE.	SECTION	COUNTY	TOTAL SHEETS	SHEET NO.
761	(107) I-2	MACOUPIN	20	12
CONTRACT NO. 72H75			ILLINOIS FED. AID PROJECT	



BUTT-JOINT DETAIL

STA. 794+13.00 TO STA. 794+63.00
 STA. 802+39.00 TO STA. 802+89.00

FILE NAME =	USER NAME = Verenskifa	DESIGNED -	REVISED -	STATE OF ILLINOIS DEPARTMENT OF TRANSPORTATION	BUTT-JOINT DETAIL FAP 761 (IL 108)			F.A.P. RTE.	SECTION	COUNTY	TOTAL SHEETS	SHEET NO.
pw:\IL\084EBIDINTEG.illinois.gov\PWIDOT\Documents\IDOT Offices\District 6\Projects\0672\DRAWING\DATA\EA0\Sheets\0672H75-sht-detail.dwg	DESIGNED -	REVISED -	761					(107) I-2	MACOUPIN	20	13	
Default	PLOT SCALE = 40.0000' / in.	CHECKED -	REVISED -		CONTRACT NO. 72H75			ILLINOIS FED. AID PROJECT				
	PLOT DATE = 8/10/2016	DATE -	REVISED -		SCALE:	SHEET OF SHEETS	STA. TO STA.					



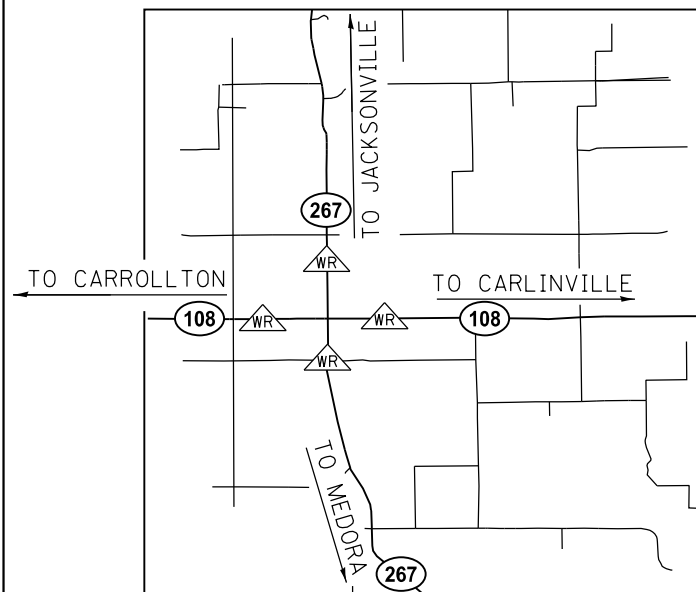
VICINITY MAP

NTS

NOTES

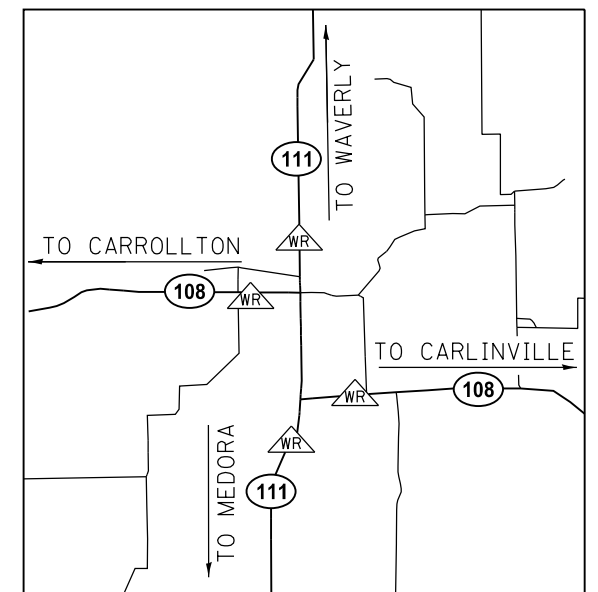
1. SEE SPECIAL PROVISIONS FOR TRAFFIC CONTROL PLAN.
2. LOCATION OF WIDTH RESTRICTION SIGNING IS SUBJECT TO THE APPROVAL OF THE ENGINEER.

= LOCATION OF WIDTH RESTRICTION SIGNING



267/108 INTERSECTION

NTS



111/108 INTERSECTION

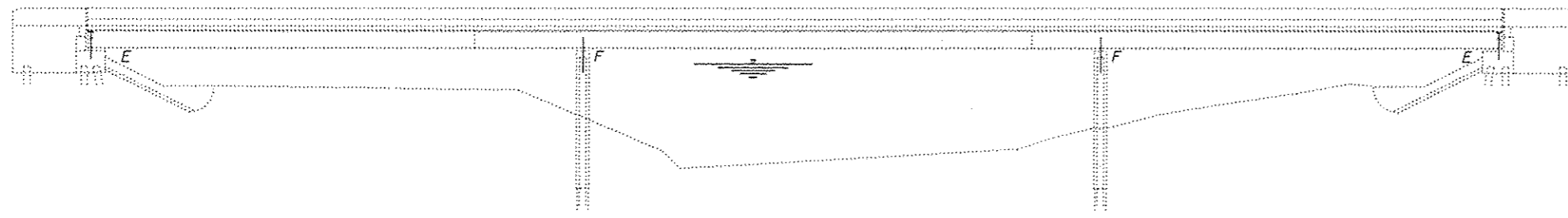
NTS



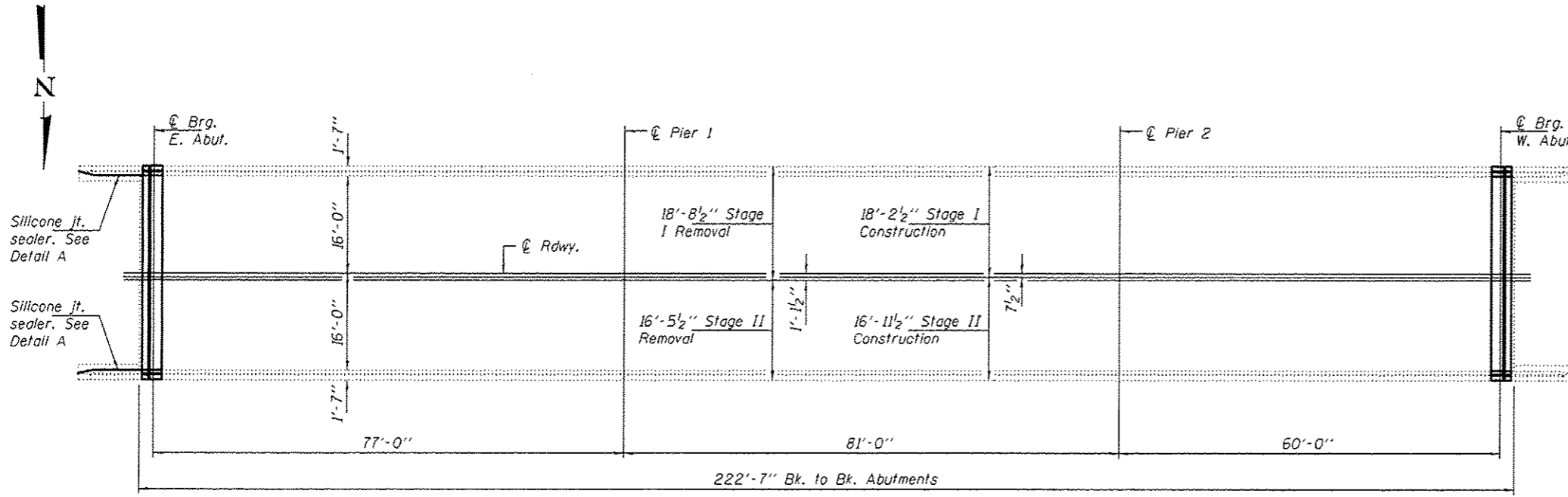
FILE NAME =	USER NAME = Verenskif	DESIGNED -	REVISED -	STATE OF ILLINOIS DEPARTMENT OF TRANSPORTATION	WIDTH RESTRICTION SIGNING FAP 761 (IL 108)				F.A.P. R.E.	SECTION	COUNTY	TOTAL SHEETS	SHEET NO.			
pw\ill084EBIDINTEG.illinois.gov\PIWIDOT\Documents\DOT Offices\District 6\Projects\0672\DRAWING\DATA\EA0\Sheets\0672H75-sht-det.dwg		CHECKED -	REVISED -		SCALE:	SHEET	OF	SHEETS	STA.	TO	STA.	761	(107) I-2	MACOUPIN	20	14
Default		DATE -	REVISED -		CONTRACT NO. 72H75											
					ILLINOIS FED. AID PROJECT											

GENERAL NOTES

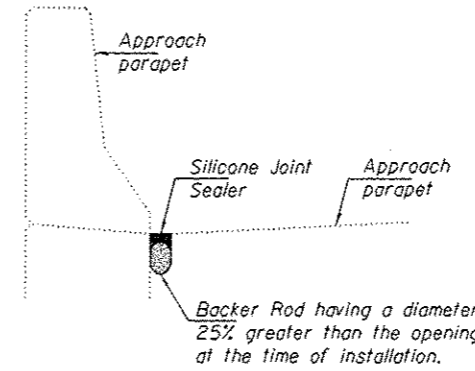
All structural steel shall conform to AASHTO Classification M-270 Gr. 36, unless otherwise noted.
 Reinforcement bars designated (E) shall be epoxy coated.
 Prior to pouring the new concrete deck, all heavy or loose rust, loose mill scale, and other loose or potentially detrimental foreign material shall be removed from the surfaces in contact with concrete. Tightly adhered paint may remain unless otherwise noted. Removal shall be accomplished by methods that will not damage the steel and the cost will be included in the pay item covering removal of the existing concrete.
 Plan dimensions and details relative to existing plans are subject to nominal construction variations. The Contractor shall field verify existing dimensions and details affecting new construction and make necessary approved adjustments prior to construction or ordering of materials. Such variations shall not be cause for additional compensation for a change in scope of the work, however, the Contractor will be paid for the quantity actually furnished at the unit price bid for the work.
 Existing reinforcement bars extending into the removal area shall be cleaned, straightened and incorporated into the new construction. Any reinforcement bars that are damaged during concrete removal shall be replaced with an approved bar splicer or anchorage system. Cost included with Concrete Removal.
 The deck surface shall have its final finish tined according to Article 420.09(e)(1) of the Standard Specifications. Cost included with Concrete Superstructure.
 Joint openings shall be adjusted according to Article 520.04 of the Std. Specs. when the deck is poured at an ambient temperature other than 50° F.
 Cleaning and painting of the existing structural steel shall be as specified in the special provision for "Cleaning and Painting Existing Steel Structures". Areas to be painted shall consist of all beam ends, end diaphragms, and steel components of bearings at the abutments. Beam end painting shall extend 5' from the ends of the beams longitudinally. Also included in the areas to be painted, the bottom beam flanges and 6" up the beam webs shall be painted out to 20' from the west ends of the beams at the west abutment. All areas to be painted shall be cleaned per near white blast cleaning per SSPC 10. All existing steel cleaned shall be painted according to the requirements of paint system 1 - OZ/E/U. The color of the final finish coat shall be green (Munsell 7.5G 4/8). The use of air monitors will be required. A minimum of two air monitors will be required to monitor abrasive blasting operations. The SSPC-OP1 and SSPC-OP2 painting contractor certifications will be required. Core shall be taken not to damage rubber bearing or joint components during blasting and cleaning operations. Any damage to these components shall be repaired at the contractor's expense.
 Fasteners shall be high strength bolts. Bolts $T_b \phi$, open holes $\frac{5}{16} \phi$, unless otherwise noted.
 Synthetic fibers shall be added to the Bridge Deck Microsilica Concrete. See Special Provisions.
 Existing structural steel that will be in contact with new structural steel shall be cleaned and painted prior to erection as required by the GBSP "Cleaning and Painting Contact Surface Areas of Existing Steel Structures".



ELEVATION



PLAN



DETAIL A

TOTAL BILL OF MATERIAL

ITEM	UNIT	QUANTITY
Concrete Removal	Cu. Yd.	9.7
Concrete Superstructure	Cu. Yd.	10.5
Preformed Joint Strip Seal	Foot	78
Reinforcement Bars, Epoxy Coated	Pound	1210
Bar Splicers	Each	24
Protective Coat	Sq. Yd.	19.5
Bridge Deck Grooving	Sq. Yd.	720.4
Silicone Joint Sealer, $\frac{3}{4}$ "	Foot	24
Deck Slab Repair (Full Depth, Type II)	Sq. Yd.	20.7
Bridge Deck Scarification, $\frac{3}{4}$ "	Sq. Yd.	768.4
Bridge Deck Microsilica Concrete Overlay, $2\frac{1}{2}$ "	Sq. Yd.	768.4
Cleaning and Painting Steel Bridge No. 1	L.S.	1
Containment and Disposal of Non-Lead Paint Cleaning Residues, Bridge No. 1	L.S.	1
Structural Steel Repair	Pound	1020

* On new concrete adjacent to joints only.



EXPIRES 11-30-2016

DESIGNED: *Stephen M. Ryan*
 CHECKED: *Steph M. Ryan*
 DRAWN: *balva*
 CHECKED: *SMR* *ccc*

PASSED: *David Carl Puzey*
 ACTING ENGINEER OF BRIDGES AND STRUCTURES

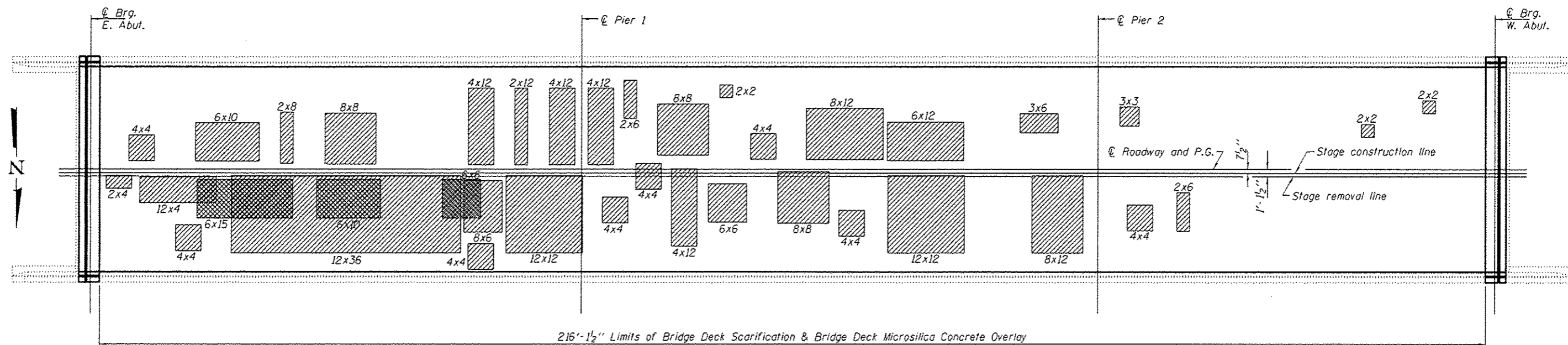
DATE: OCTOBER 2, 2015
 REVISED: _____
 REVISED: _____

STATE OF ILLINOIS
 DEPARTMENT OF TRANSPORTATION

PLAN AND ELEVATION
 FAP 761 (IL 108) OVER JOE'S CREEK
 SN 059-0048

SHEET NO. 1 OF 6 SHEETS

F.A.P. RTE.	SECTION	COUNTY	TOTAL SHEETS	SHEET NO.
161	107H-2	MACOUPIN	20	15
ILLINOIS FED. AID PROJECT			CONTRACT NO. 72H75	

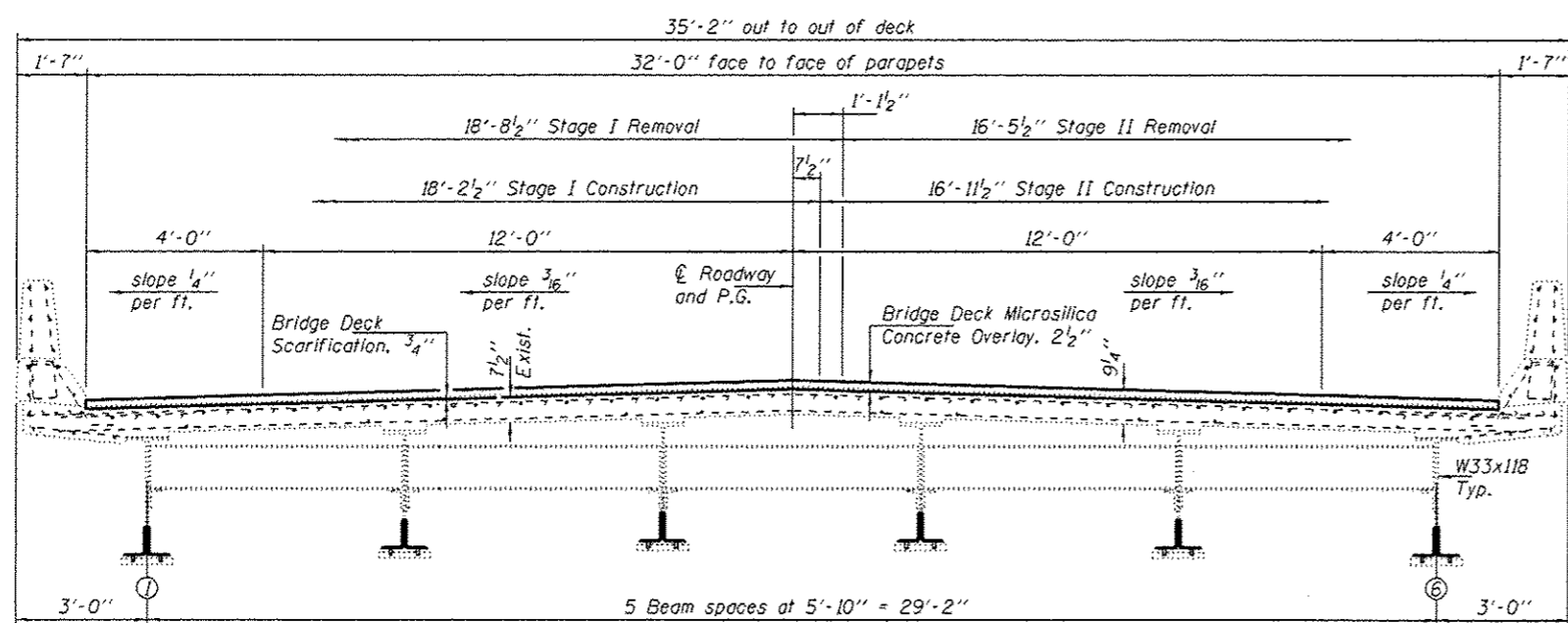


216'-1/2" Limits of Bridge Deck Scarification & Bridge Deck Microsilica Concrete Overlay

DECK PATCHING PLAN

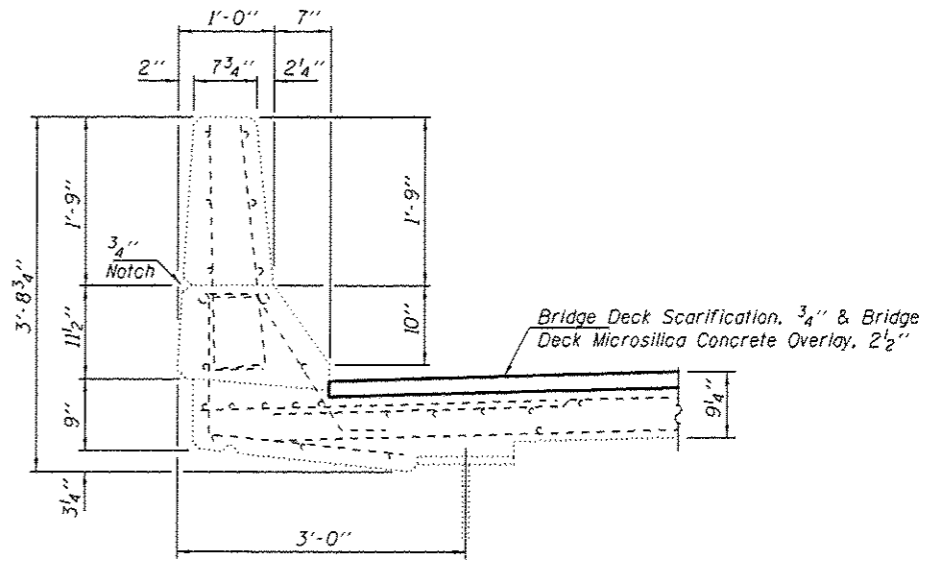
- Partial Depth Patch
- Full Depth Patch

Areas of deck repairs shown are estimated.
The Engineer shall show actual locations of deck repairs on As-built Plans.



CROSS SECTION

(Looking West)
For beam end repairs.
See sheet 6 of 6.



SECTION THRU PARAPET

BILL OF MATERIAL

Item	Unit	Quantity
Deck Slab Repair (Partial)	Sq. Yd.	200
Deck Slab Repair (Full Depth, Type I)	Sq. Yd.	20.7
Bridge Deck Microsilica Concrete Overlay, 2 1/2"	Sq. Yd.	768.4
Bridge Deck Scarification, 3/4"	Sq. Yd.	768.4

* Quantity included for information only. Cost included with Bridge Deck Microsilica Concrete Overlay, 2 1/2". See Special Provisions.

DESIGNED SMR
CHECKED CCC
DRAWN baliva
CHECKED SMR CCC

DATE OCTOBER 2, 2015
PASSED
ACTING ENGINEER OF BRIDGES AND STRUCTURES

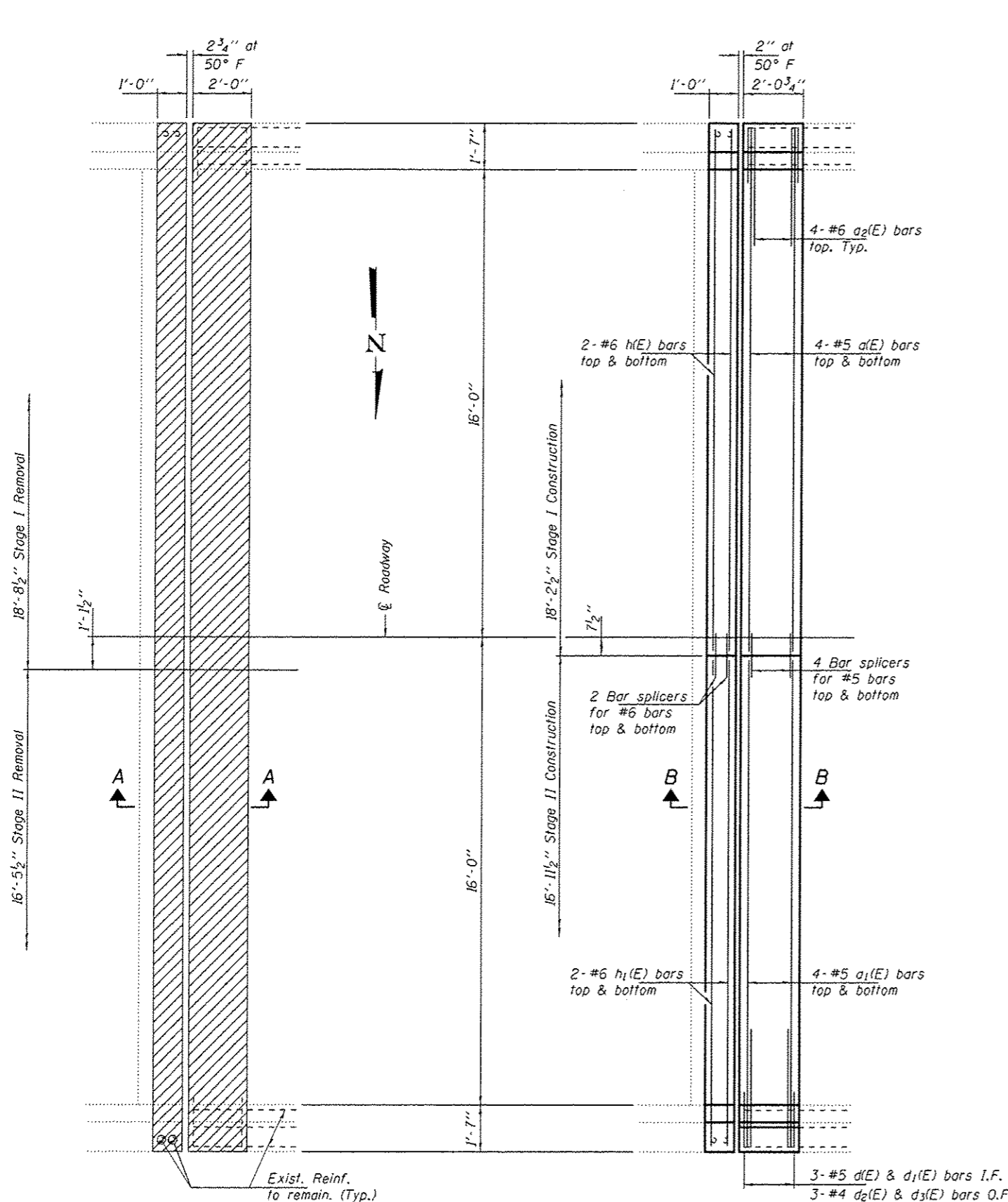
STATE OF ILLINOIS
DEPARTMENT OF TRANSPORTATION

REPAIR DETAILS
SN 059-0048

SHEET NO. 2 OF 6 SHEETS

F.A.P. RTE.	SECTION	COUNTY	TOTAL SHEETS	SHEET NO.
161	107H-2	MACDUPIN	20	16

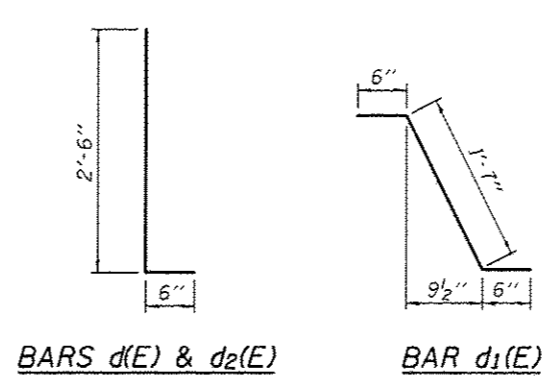
CONTRACT NO. 72H75
ILLINOIS FED. AID PROJECT



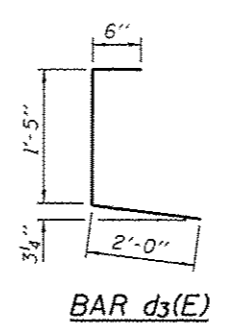
REMOVAL PLAN

Hatched areas indicate removal
East abutment shown
West abutment similar by rotation

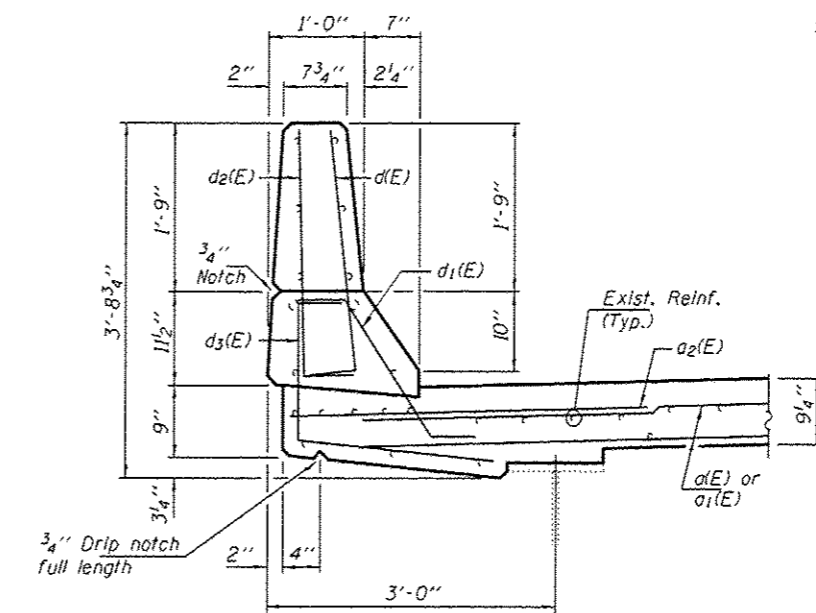
REPLACEMENT PLAN



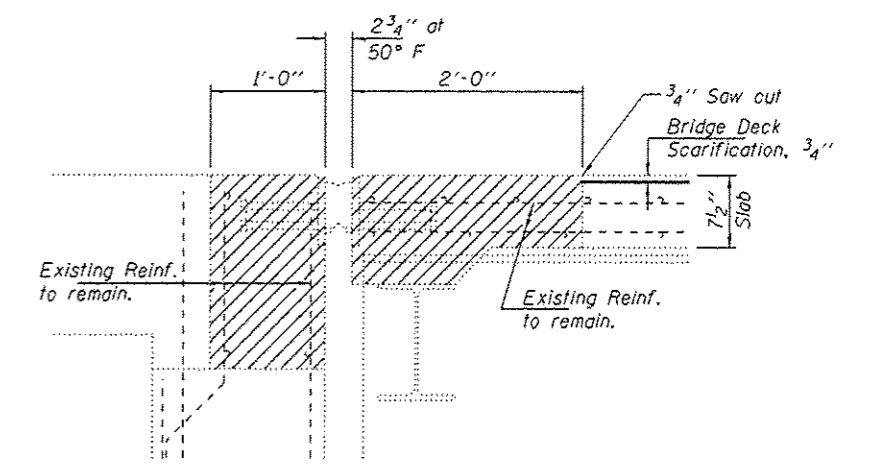
BARS d(E) & d₂(E) **BAR d₁(E)**



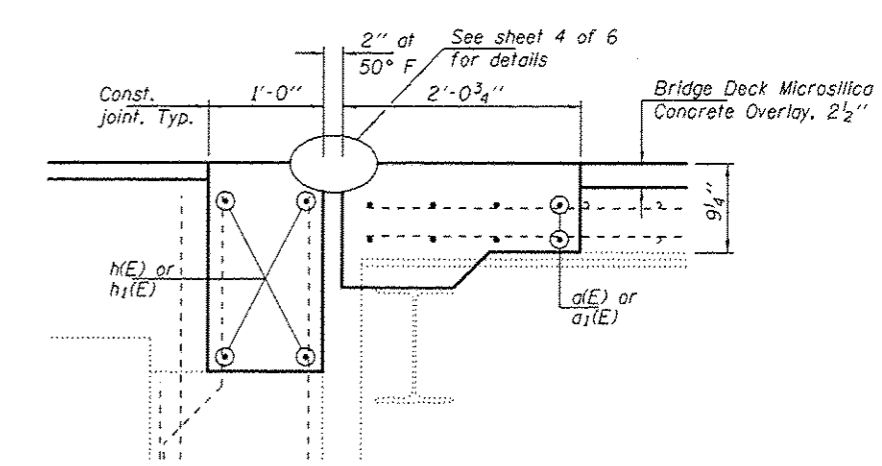
BAR d₃(E)



SECTION THRU PARAPET



SECTION A-A
(Near Roadway)



SECTION B-B
(Near Roadway)

BILL OF MATERIAL

Bar	No.	Size	Length	Shape
d ₁ (E)	16	#5	17'-10"	┌
a ₁ (E)	16	#5	16'-7"	┌
a ₂ (E)	16	#6	4'-0"	┌
d(E)	12	#5	3'-0"	┌
d ₁ (E)	12	#5	2'-7"	┌
d ₂ (E)	12	#4	3'-0"	┌
d ₃ (E)	12	#4	3'-11"	┌
h(E)	8	#6	17'-10"	┌
h ₁ (E)	8	#6	16'-7"	┌
Concrete Removal		Cu. Yd.	9.7	
Concrete Superstructure		Cu. Yd.	10.5	
Reinforcement Bars, Epoxy Coated		Lbs.	1210	

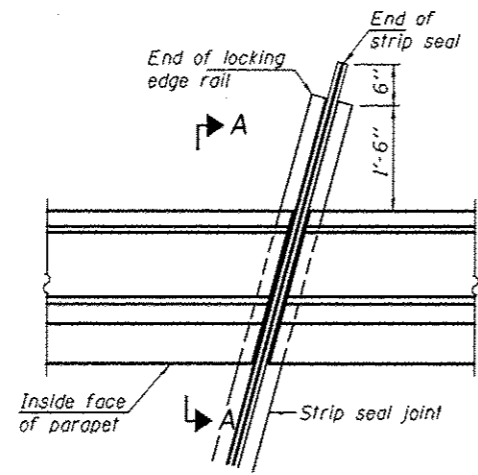
DESIGNED SMR
CHECKED CCC
DRAWN baliva
CHECKED SMR CCC

DATE OCTOBER 2, 2015
PASSED [Signature]
ACTING ENGINEER OF BRIDGES AND STRUCTURES

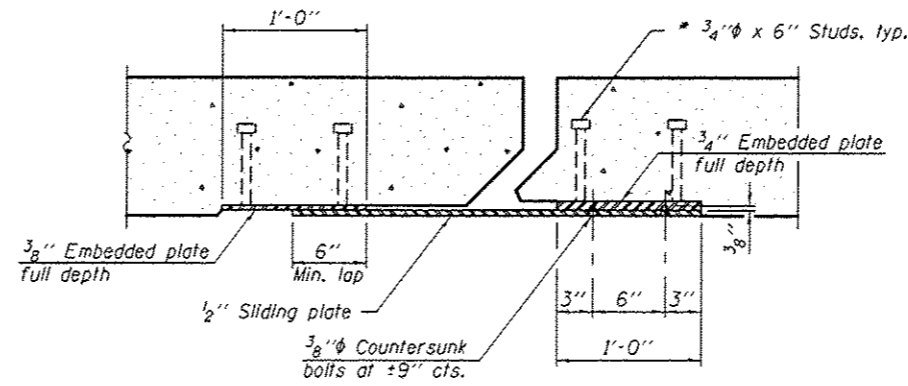
STATE OF ILLINOIS
DEPARTMENT OF TRANSPORTATION

REPAIR DETAILS
SN 059-0048
SHEET NO. 3 OF 6 SHEETS

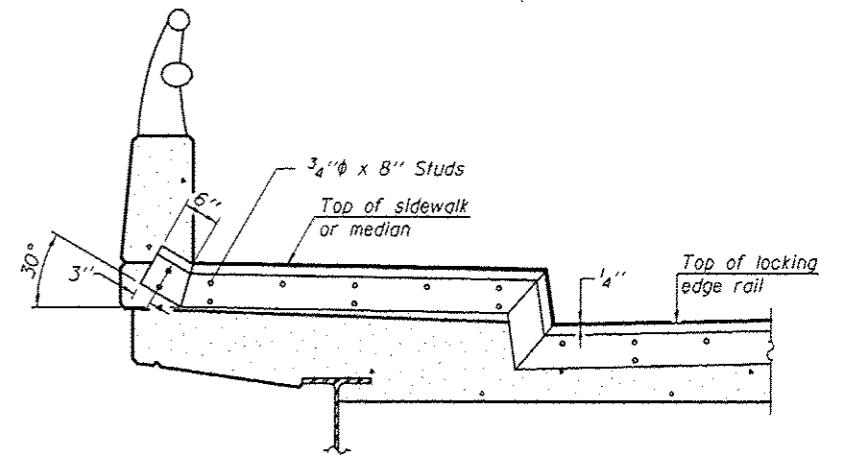
F.A.P. RTE.	SECTION	COUNTY	TOTAL SHEETS	SHEET NO.
161	107H-2	MACOUPIN	20	17
CONTRACT NO. 72H75			[ILLINOIS] FED. AID PROJECT	



PLAN
(For skews $\leq 30^\circ$)

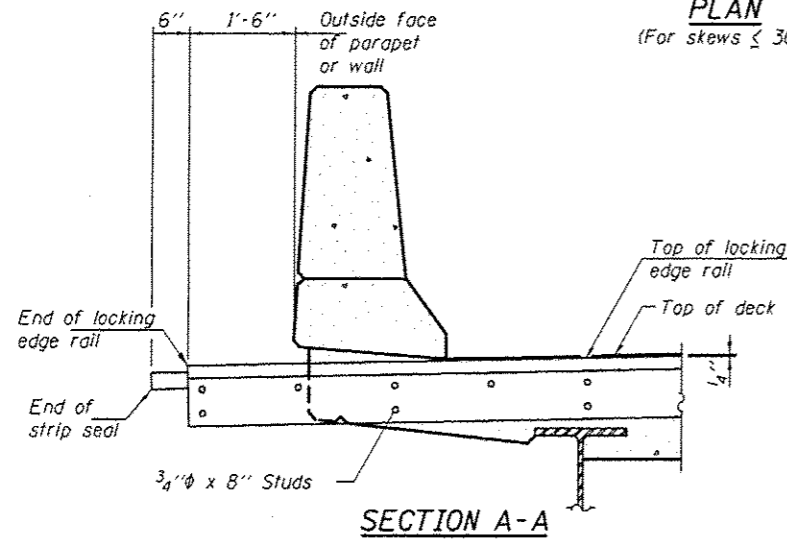


SECTION C-C

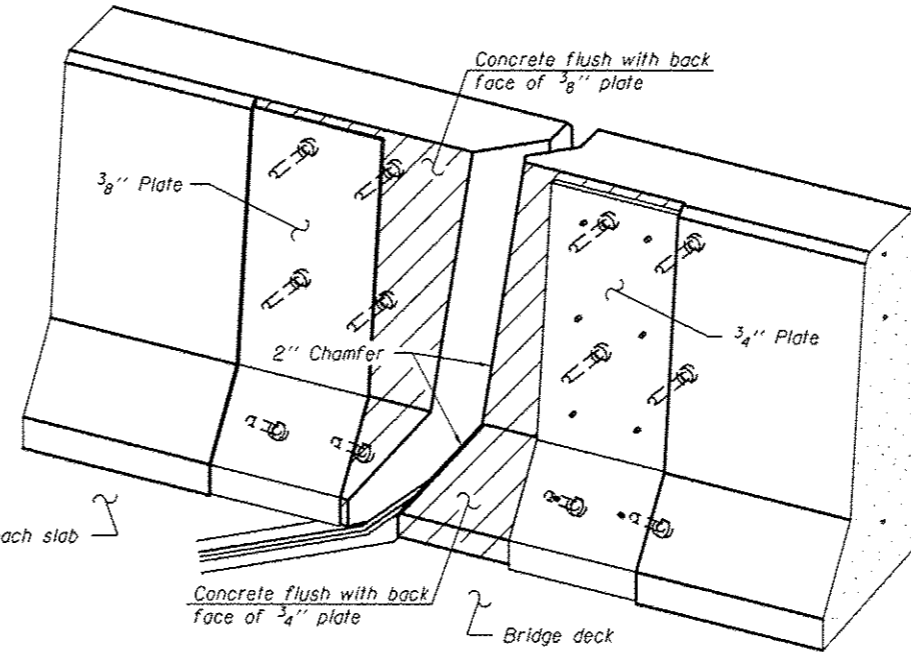


TYPICAL END TREATMENT AT SIDEWALK OR MEDIAN

Shorter plates with a single row of studs at 12" cts. may be necessary on medians which are shallower than 9". See manufacturer's recommendation.



SECTION A-A



TRIMETRIC VIEW
(Showing back plates only)

Notes:

The strip seal shall be made continuous and shall have a minimum thickness of 1/4". The configuration of the strip seal shall match the configuration of the Locking Edge Rails. Open or "webbed" strip seal gland configurations are not permitted. The gland shall be sized for a maximum rated movement of 4 inches.

The Locking Edge Rails depicted are conceptual only, except for the minimum dimensions shown. The actual configuration of the Locking Edge Rails and matching strip seal may vary from manufacturer to manufacturer. Flanged edge rails will not be allowed. Locking Edge Rails may be spliced at slope discontinuities.

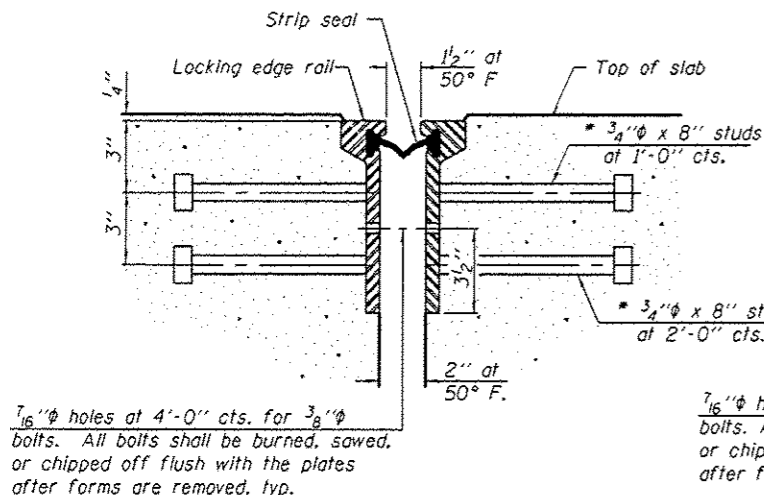
The manufacturer's recommended installation methods shall be followed.

The joint opening and deck dimensions detailed on the superstructure are based on a rolled rail expansion joint. If the Contractor elects to use the welded rail expansion joint, the opening and deck dimensions shall be modified according to the dimensions detailed on this sheet. Required modifications shall be made at no additional cost to the State.

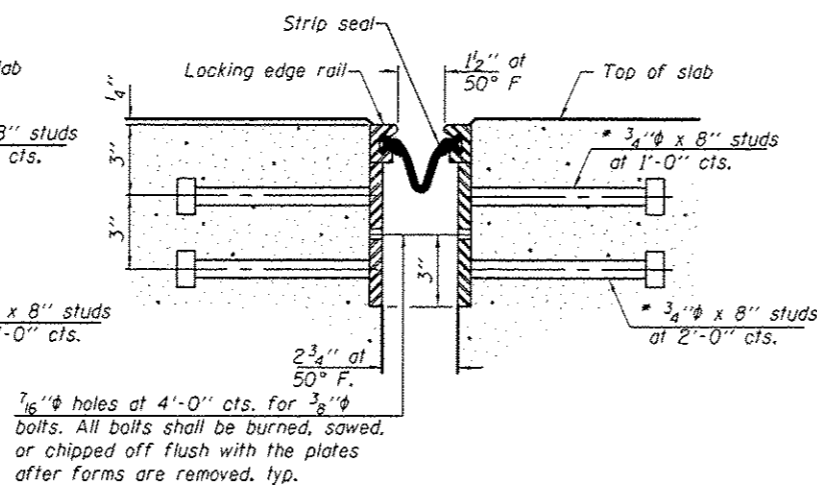
All steel components shall be galvanized after fabrication according to Article 520.03 of the Standard Specifications.

Maximum space between rail segments shall be 3/16", sealed with a suitable sealant. Joints in rails within 10 ft. of curbs shall be welded.

Parapet plates and anchorage studs for skews > 30° included in the cost of Preformed Joint Strip Seal.



SECTION THRU ROLLED RAIL JOINT



SECTION THRU WELDED RAIL JOINT

7/16" holes at 4'-0" cts. for 3/8" bolts. All bolts shall be burned, sawed, or chipped off flush with the plates after forms are removed, typ.

7/16" holes at 4'-0" cts. for 3/8" bolts. All bolts shall be burned, sawed, or chipped off flush with the plates after forms are removed, typ.

* Granular or solid flux filled headed studs conforming to Article 1006.32 of the Std. Specs., automatically end welded.

ROLLED EXTRUDED RAIL

WELDED RAIL

LOCKING EDGE RAIL SPLICE

The inside of the locking edge rail groove shall be free of weld residue.

Rolled rail shown, welded rail similar.

LOCKING EDGE RAILS

BILL OF MATERIAL

Item	Unit	Total
Preformed Joint Strip Seal	Foot	78

1-27-12

DESIGNED SMR
CHECKED CCC
DRAWN baliva
CHECKED SMR CCC

PASSED

Carl Perry
ACTING ENGINEER OF BRIDGES AND STRUCTURES

DATE OCTOBER 2, 2015

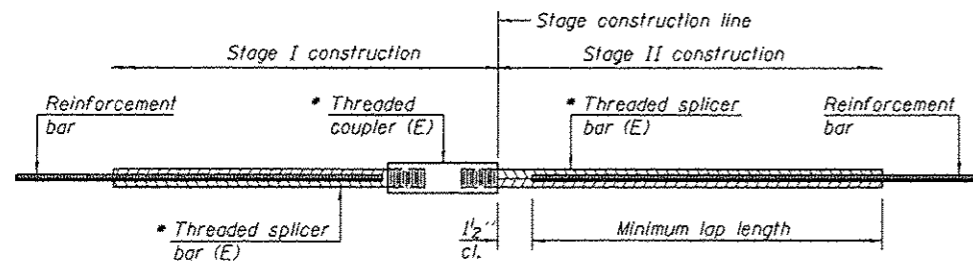
REVISED
REVISED

STATE OF ILLINOIS
DEPARTMENT OF TRANSPORTATION

PREFORMED JOINT STRIP SEAL
SN 059-0048

SHEET NO. 4 OF 6 SHEETS

F.A.P. RTE.	SECTION	COUNTY	TOTAL SHEETS	SHEET NO.
161	110711-2	MACOUPIN	20	18
ILLINOIS FED. AID PROJECT				CONTRACT NO. T2H75

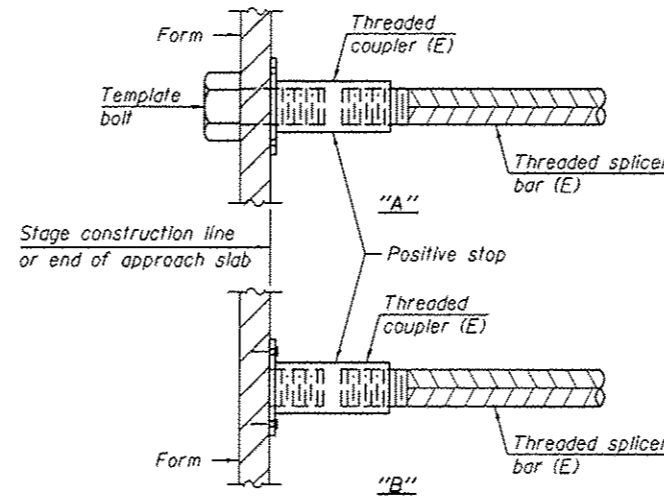


STANDARD BAR SPLICER ASSEMBLY

Threaded splicer bar length = min. lap length + 1/2" + thread length

* Epoxy not required on Bar Splicer Assembly components used in conjunction with black bars.

Location	Bar size	No. assemblies required	Minimum lap length
E. Abut.	#5	8	3'-7"
E. Abut.	#6	4	4'-4"
W. Abut.	#5	8	3'-7"
W. Abut.	#6	4	4'-4"

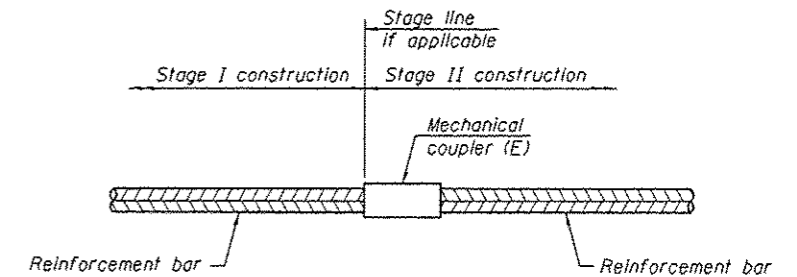


INSTALLATION AND SETTING METHODS

"A" : Set bar splicer assembly by means of a template bolt.

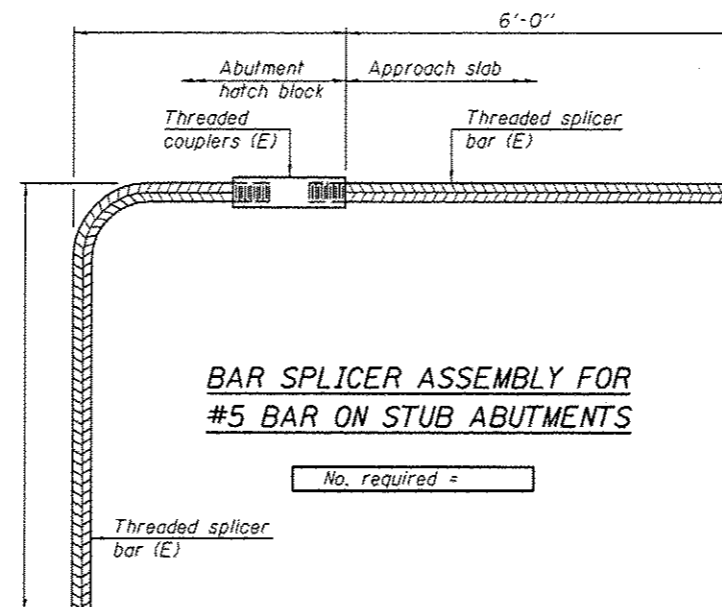
"B" : Set bar splicer assembly by nailing to wood forms or cementing to steel forms.

(E) : Indicates epoxy coating.



STANDARD MECHANICAL SPLICER

Location	Bar size	No. assemblies required



BAR SPLICER ASSEMBLY FOR #5 BAR ON STUB ABUTMENTS

No. required =

NOTES

Splicer bars shall be deformed with threaded ends and have a minimum 60 ksi yield strength.

All reinforcement shall be lapped and tied to the splicer bars.

Bar splicer assemblies shall be epoxy coated according to the requirements for reinforcement bars. See Section 508 of the Standard Specifications.

See approved list of bar splicer assemblies and mechanical splicers for alternatives.

BSD-1 6-8-15

DESIGNED SMR
 CHECKED CCC
 DRAWN baliva
 CHECKED SMR CCC

PASSED
 ACTING ENGINEER OF BRIDGES AND STRUCTURES

DATE OCTOBER 2, 2015
 REVISED
 REVISED

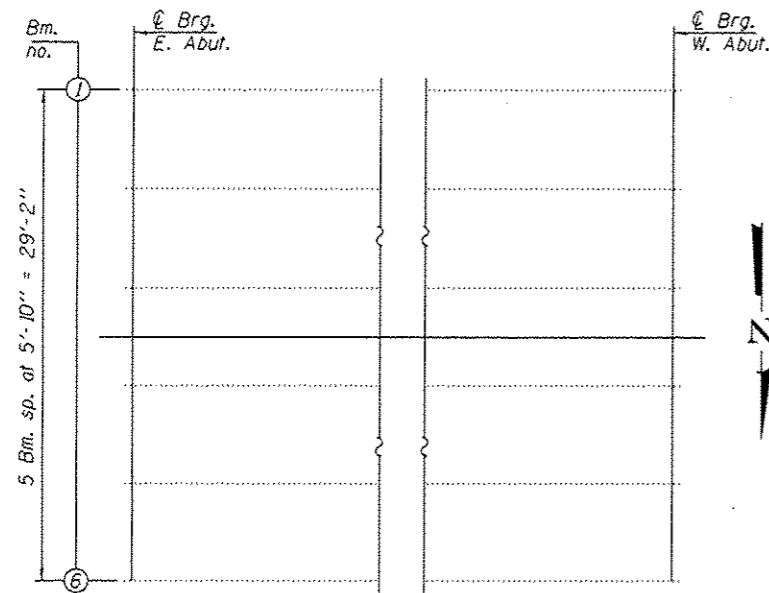
STATE OF ILLINOIS
 DEPARTMENT OF TRANSPORTATION

BAR SPLICER ASSEMBLY AND MECHANICAL SPLICER DETAILS
 SN 059-0048

SHEET NO. 5 OF 6 SHEETS

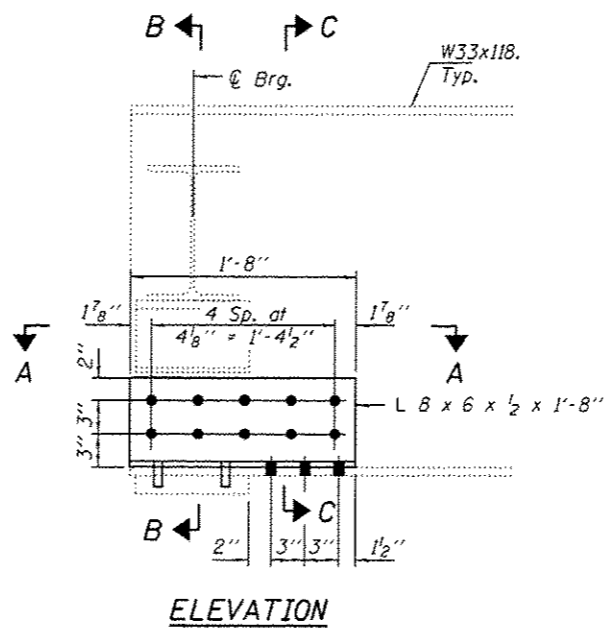
F.A.P. RTE.	SECTION	COUNTY	TOTAL SHEETS	SHEET NO.
161	107H-2	MACOUPIN	20	19

CONTRACT NO. 72H75
 ILLINOIS FED. AID PROJECT



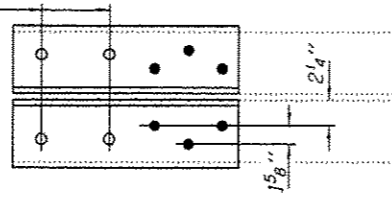
PARTIAL PLAN

All beam ends at both abutments to be repaired per details on this sheet.

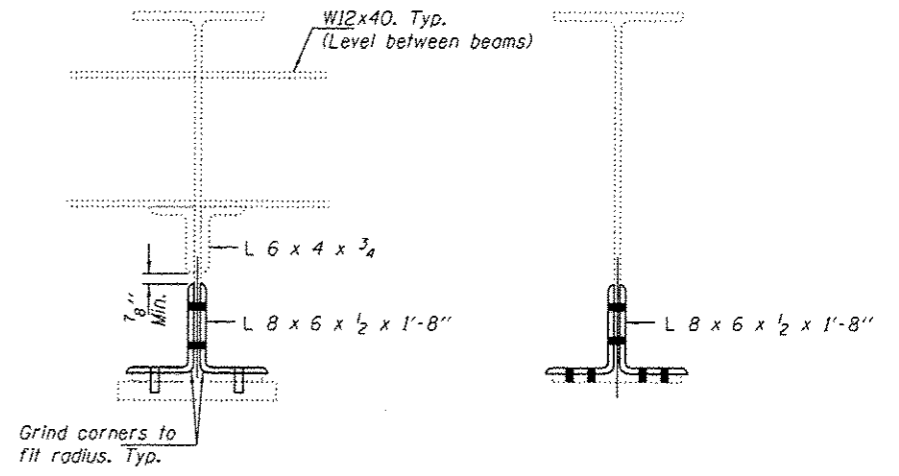


ELEVATION

Remove and replace 3/4" threaded studs. Field drill holes in new angle. Typ.



SECTION A-A



SECTION B-B

SECTION C-C