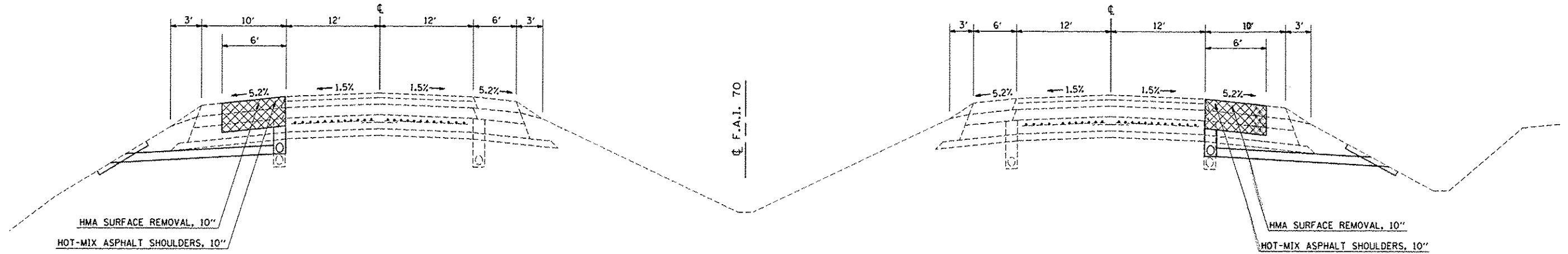


NOTE: ALL WORK IN WB LANES SHALL BE OMITTED FROM STA. 2771+40.00 TO STA. 108+45.00.

PRE-STAGE TYPICAL CROSS SECTION

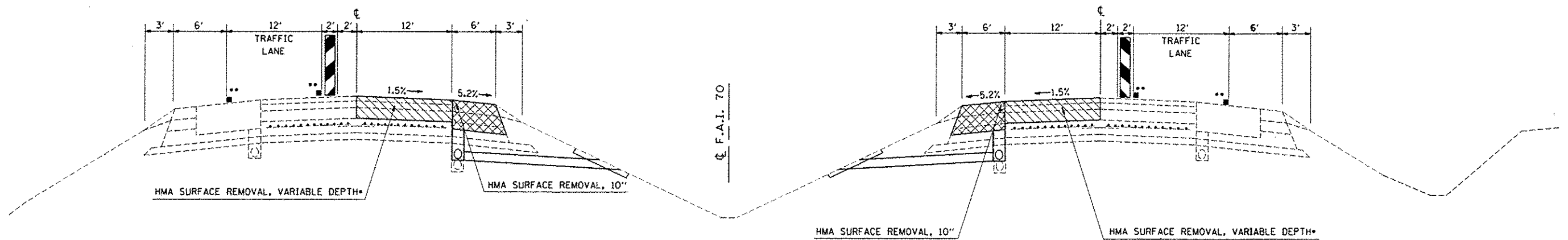


NOTE: NOT DRAWN TO SCALE

REFER TO "DROP-OFF BETWEEN TRAVELED LANES" SPECIAL PROVISION FOR GUIDANCE IN REGARDS TO MILLING AND RESURFACING OPERATIONS.

NOTE: ALL WORK IN WB LANES SHALL BE OMITTED FROM STA. 2771+40.00 TO STA. 108+45.00.

STAGE 1A TYPICAL CROSS SECTION



NOTE: NOT DRAWN TO SCALE

REFER TO "DROP-OFF BETWEEN TRAVELED LANES" SPECIAL PROVISION FOR GUIDANCE IN REGARDS TO MILLING AND RESURFACING OPERATIONS.

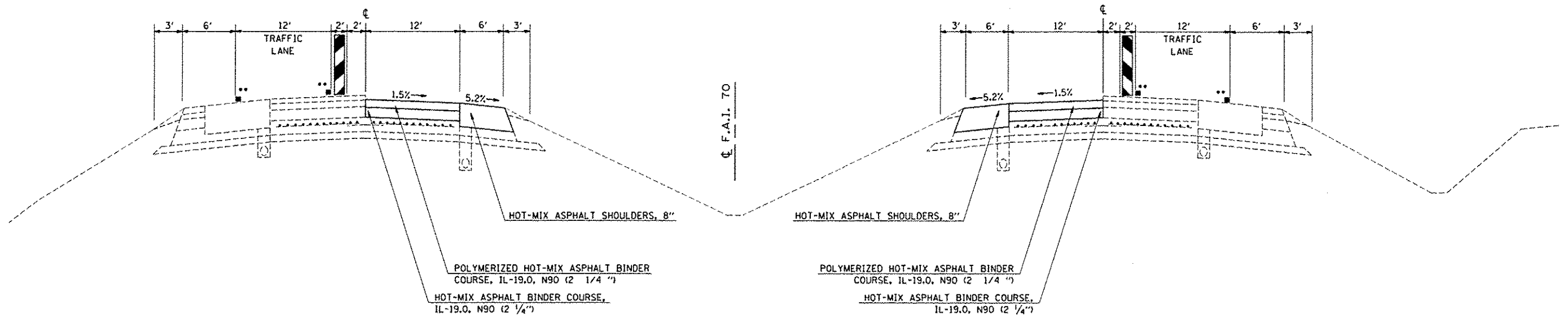
- COMPLETE HMA OVERLAY SHALL BE REMOVED TO PCC PAVEMENT. SEE CORING REPORT FOR HMA OVERLAY DEPTHS.
- STAGE STRIPING & REMOVAL IS TO BE INCLUDED IN THE COST OF TRAFFIC CONTROL STANDARD 701401

Rev. 10-18-16

FILE NAME :	USER NAME : Default	DESIGNED -	REVISED -	STATE OF ILLINOIS DEPARTMENT OF TRANSPORTATION	STAGING TYPICAL CROSS SECTIONS			F.A.I. RTE.	SECTION	COUNTY	TOTAL SHEETS	SHEET NO.
\\sllr04ebid\integ\illinois.gov\p\1001\00	ements\1001 Offices\District 7\Projects\7472	DRAWN to CAD sheets\0774722-shr-typical	REVISED -					TO	(18-45IRS-5	CUMBERLAND	65	10
	PLOT SCALE = 100.0000' / in.	CHECKED -	REVISED -					CONTRACT NO. 74722		ILLINOIS FED. AID PROJECT		
Default	PLOT DATE = 10/17/2016	DATE -	REVISED -					SCALE: N/A	SHEET 1 OF 3 SHEETS	STA. TO STA.		

NOTE: ALL WORK IN WB LANES SHALL BE OMITTED FROM STA. 2771+40.00 TO STA. 108+45.00.

STAGE 1B TYPICAL CROSS SECTION



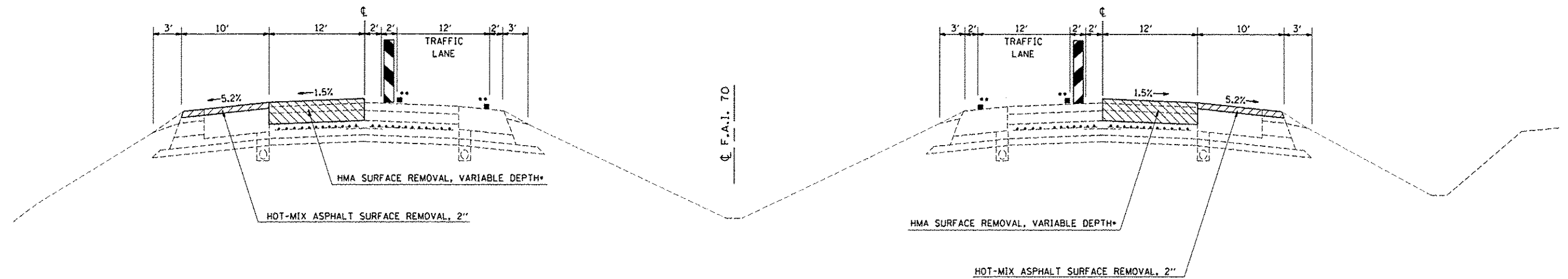
NOTE: NOT DRAWN TO SCALE

** STAGE STRIPING & REMOVAL IS TO BE INCLUDED IN THE COST OF TRAFFIC CONTROL STANDARD 701401

REFER TO "DROP-OFF BETWEEN TRAVELED LANES" SPECIAL PROVISION FOR GUIDANCE IN REGARDS TO MILLING AND RESURFACING OPERATIONS.

NOTE: ALL WORK IN WB LANES SHALL BE OMITTED FROM STA. 2771+40.00 TO STA. 108+45.00.

STAGE 2A TYPICAL CROSS SECTION



NOTE: NOT DRAWN TO SCALE

* COMPLETE HMA OVERLAY SHALL BE REMOVED TO PCC PAVEMENT. SEE CORING REPORT FOR HMA OVERLAY DEPTHS.

** STAGE STRIPING & REMOVAL IS TO BE INCLUDED IN THE COST OF TRAFFIC CONTROL STANDARD 701401

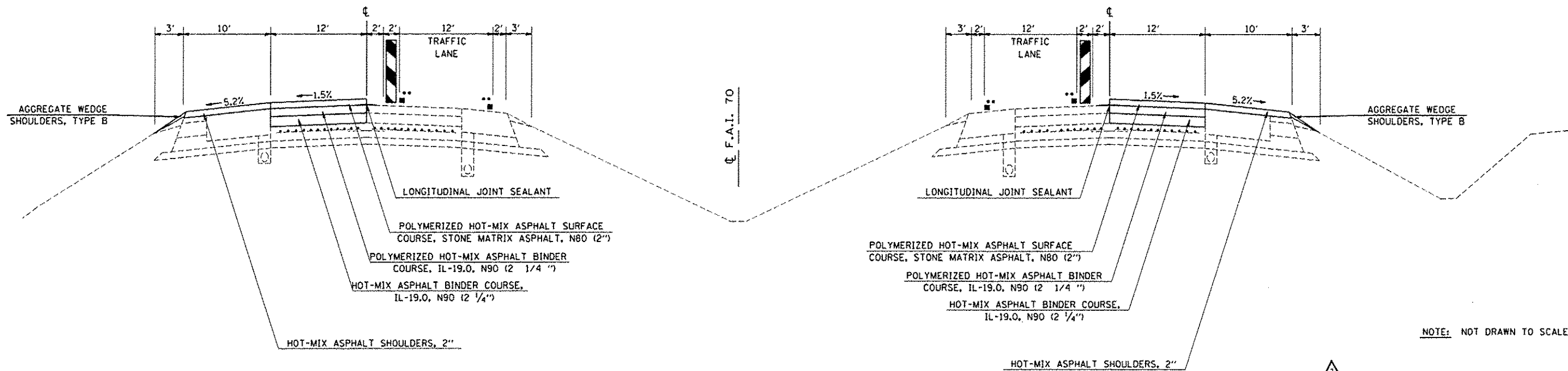
REFER TO "DROP-OFF BETWEEN TRAVELED LANES" SPECIAL PROVISION FOR GUIDANCE IN REGARDS TO MILLING AND RESURFACING OPERATIONS.

Rev. 10-18-16

FILE NAME =	USER NAME = Default	DESIGNED -	REVISED -	STATE OF ILLINOIS DEPARTMENT OF TRANSPORTATION	STAGING TYPICAL CROSS SECTIONS		F.A.I. RTE.	SECTION	COUNTY	TOTAL SHEETS	SHEET NO.	
pw:\IL004E81DINTEG.illinois.gov\PI001\Documents\1001 Offices\District 7\Projects\7472\DRAWN to CAB sheets\0774722-shr-typical	DOCUMENTS\1001 Offices\District 7\Projects\7472\DRAWN to CAB sheets\0774722-shr-typical	CHECKED -	REVISED -		SCALE: N/A	SHEET 2 OF 3 SHEETS	STA.	TO STA.	(18-45IRS-5)	CUMBERLAND	65	11
Default	PLOT SCALE = 100.0000 1/2 in.	DATE -	REVISED -						CONTRACT NO. 74722			
	PLOT DATE = 10/17/2016								ILLINOIS FED. AID PROJECT			

NOTE: ALL WORK IN WB LANES SHALL BE OMITTED FROM STA. 2771+40.00 TO STA. 108+45.00.

STAGE 2B TYPICAL CROSS SECTION



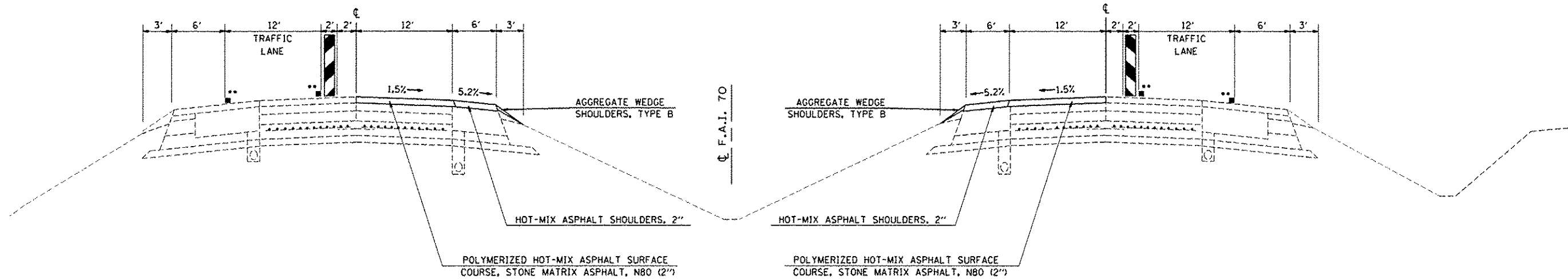
NOTE: NOT DRAWN TO SCALE

** STAGE STRIPING & REMOVAL IS TO BE INCLUDED IN THE COST OF TRAFFIC CONTROL STANDARD 701401

REFER TO "DROP-OFF BETWEEN TRAVELED LANES" SPECIAL PROVISION FOR GUIDANCE IN REGARDS TO MILLING AND RESURFACING OPERATIONS.

NOTE: ALL WORK IN WB LANES SHALL BE OMITTED FROM STA. 2771+40.00 TO STA. 108+45.00.

STAGE 3 TYPICAL CROSS SECTION



NOTE: NOT DRAWN TO SCALE

** STAGE STRIPING & REMOVAL IS TO BE INCLUDED IN THE COST OF TRAFFIC CONTROL STANDARD 701401

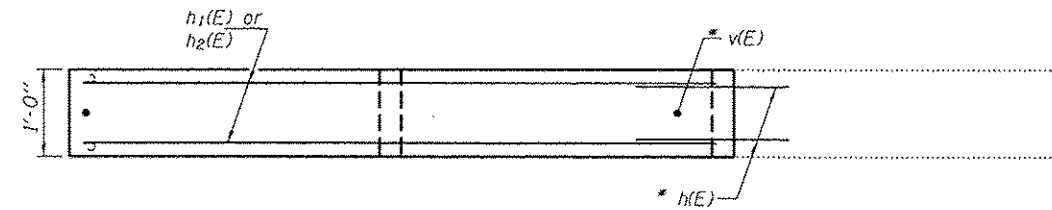
REFER TO "DROP-OFF BETWEEN TRAVELED LANES" SPECIAL PROVISION FOR GUIDANCE IN REGARDS TO MILLING AND RESURFACING OPERATIONS.

Rev. 10-18-16

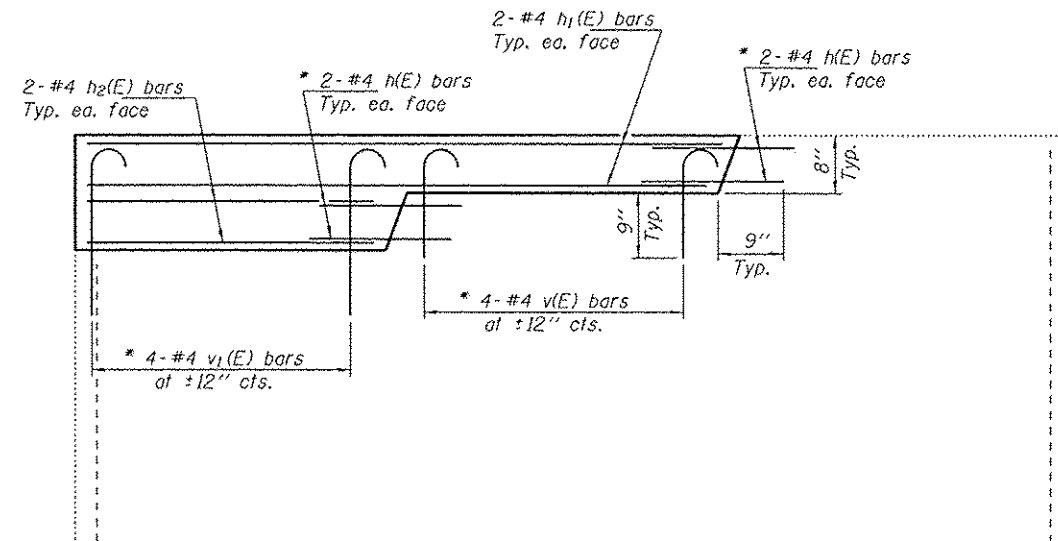
FILE NAME: p:\11804E810\NTEG\illinois.gov\FW\DOT\Do	USER NAME: Default	DESIGNED: -	REVISED: -	STATE OF ILLINOIS DEPARTMENT OF TRANSPORTATION	STAGING TYPICAL CROSS SECTIONS		F.A.I. RTE. 70	SECTION (18-45)RS-5	COUNTY CUMBERLAND	TOTAL SHEETS 65	SHEET NO. 12	
	units\DOT Offices\District 7\Projects\747	DRAWN to\CAD\Sheets\0774722-sh3-typical	REVISED: -		SCALE: N/A	SHEET 3 OF 3 SHEETS	STA. TO STA.	CONTRACT NO. 74722				
	PLOT SCALE: 1/8" = 1' / 1/4" = 1'	CHECKED: -	REVISED: -		ILLINOIS FED. AID PROJECT							
Default	PLOT DATE: 10/17/2016	DATE: -	REVISED: -									

NOTES

Reinforcement bars designated (E) shall be epoxy coated.
 Plan dimensions and details relative to existing plans are subject to nominal construction variations. The Contractor shall field verify existing dimensions and details affecting new construction and make necessary approved adjustments prior to construction or ordering of materials. Such variations shall not be cause for additional compensation for a change in scope of the work, however, the Contractor will be paid for the quantity actually furnished at the unit price bid for the work.

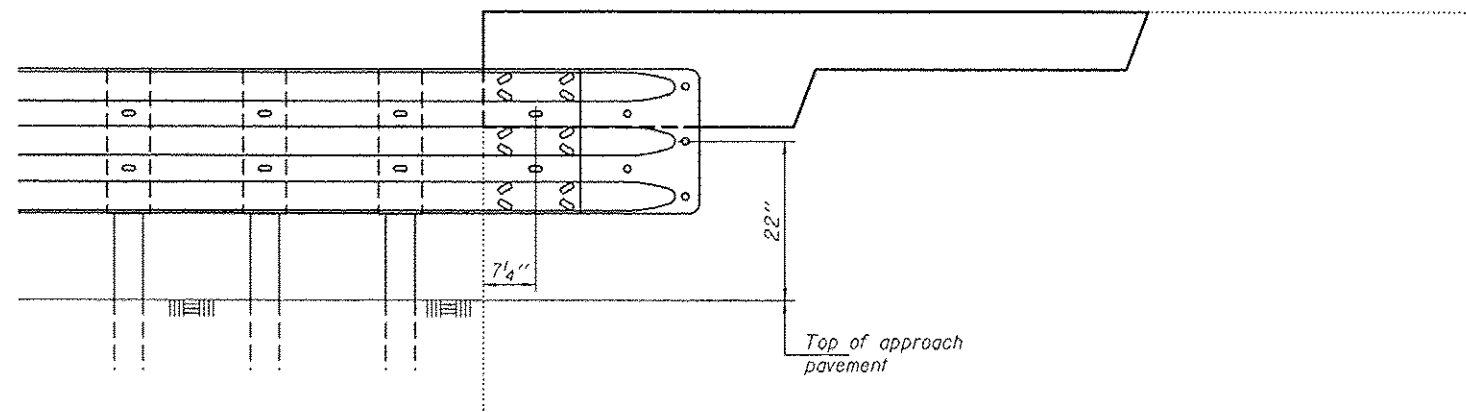


SECTION

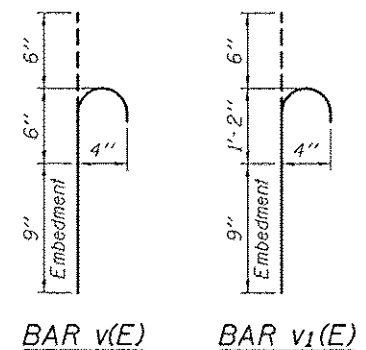


PROPOSED ELEVATION

* Epoxy grout h(E), v(E) & v1(E) bars in 9" min. holes according to Article 584 of the Standard Specifications. Cost included with Reinforcement Bars, Epoxy Coated.



GUARDRAIL LOCATION



BAR v(E) BAR v1(E)

**BILL OF MATERIAL
4 WINGWALLS**

Bar	No.	Size	Length	Shape
h(E)	8	#4	1'-9"	—
h1(E)	4	#4	7'-1"	—
h2(E)	4	#4	3'-3"	—
v(E)	4	#4	1'-3"	⌒
v1(E)	4	#4	2'-5"	⌒
Concrete Structures			Cu. Yd.	1.1
Reinforcement Bars, Epoxy Coated			Pound	190

DESIGNED *DAB*
 CHECKED *VHV*
 DRAWN *baliva*
 CHECKED *DAB VHV*

PASSED

 ACTING ENGINEER OF BRIDGES AND STRUCTURES

DATE - OCTOBER 19, 2016
 REVISED

STATE OF ILLINOIS
 DEPARTMENT OF TRANSPORTATION

REV. 10-19-16
 SE WINGWALL MODIFICATION
 TR 138 OVER FAI 70
 SN 018-0017
 SHEET NO. 1 OF 1 SHEETS

F.A.I. RTE.	SECTION	COUNTY	TOTAL SHEETS	SHEET NO.
70	(18-45)RS-5	CUMBERLAND	65	60
ILLINOIS FED. AID PROJECT			CONTRACT NO. 74722	